



Wild Earth Travel

Small Ships, Big Adventures



wildearth-travel.com

info@wildearth-travel.com

WONDERS OF THE CELTIC SHORES - BRITISH ISLES LUXURY CRUISE

PONANT invites you on an 8-day cruise aboard *Le Lap erouse* for an exceptional immersion in Celtic lands, from Dublin to County Cork, via Scotland and Isle of Man. This interlude will take you to the heart of landscapes of wild and melancholic beauty. Between lush meadows, craggy cliffs, small colourful villages, peat bogs and moors, succumb to the charms of these lands steeped in mystery.

Over the course of your trip, at every port of call guests will each be able to choose one included excursion from the selection offered by Ponant. On this cruise, explore the coastline of the Isle of Man aboard heritage trains departing from Douglas, wander the streets of Cork city centre, or visit Canada Hill from Rothesay to admire the uninterrupted views. The range of experiences on offer promises intense and varied moments (for the full list of excursions, click on the Itinerary tab).

Le Lap erouse will set sail towards Rothesay, an elegant Victorian seaside resort on the Isle of Bute. Constructed around its 13th-century castle, the small town brims with charm, with its fine dwellings in the extravagant Georgian architectural style, and its sumptuous wild and landscaped gardens.

Your ship will then take you to the Isle of Man, located between the United Kingdom and Ireland, with a clear Celtic and Viking heritage. The capital Douglas is an authentic postcard from United Kingdom of yesteryear with a Victorian atmosphere. You will also discover Liverpool, a former industrial powerhouse, today completely redeveloped, located on the banks of the

Mersey and famous as the birthplace of the Beatles.

In the north of Wales and in the west of the captivating Isle of Anglesey, succumb to the charms of the enchanting small port town of Holyhead. Often called "the mother of Wales" due to its importance in history, Holyhead is a paradise for anyone with a passion for natural landscapes and heritage. After a unique stop in Bantry, between spectacular cliffs, a fascinating bay, and vast stretches of orange-tinged moors, you will call at Cobh. Charming and romantic, a place of history and legend, the city reveals itself through its maze of cobbled streets with, in the background, its 17th-century fortress and its majestic forest.

Your cruise will end in Dublin, the Irish capital brimming with convivial atmosphere and authentic charm.



Wild Earth Travel

Small Ships, Big Adventures

0800 945 3327 (within New Zealand) | +64 (0) 3 365 1355 | **1800 107 715** (within Australia)

info@wildearth-travel.com | **wildearth-travel.com**

Wild Earth Travel

Small Ships, Big Adventures



wildearth-travel.com

info@wildearth-travel.com



Rothesay is an elegant seaside resort and the main town on the Isle of Bute, a Scottish island bathed by the Firth of Clyde, a vast expanse of coastal water sheltered from the Atlantic Ocean by the Kintyre Peninsular. The town has some remarkable monuments, including its castle, a 13th-century building modified several times over its turbulent history between Norwegian attacks and English invasion. You will also discover the Victorian architecture of the houses overlooking the romantic Rothesay Bay, as well as the Isle of Bute Discovery Centre, a unique circular structure from the 1920s constructed of cast iron and glass. Make sure you visit Mount Stuart House, an incredible 19th-century manor house built in the Georgian architectural style, with an interior that was modern for the time, and its magnificent wild and landscaped gardens.

Day 3 - Douglas

Douglas is the capital of the Isle of Man, a self-governing island in the Irish Sea between England and Ireland. The Isle of Man is best-known for its gruelling annual TT motorbike race but Douglas itself is a charming traditional seaside resort. The stroll along the busy promenade is very popular, as well as the visit of the Manx Museum, which retraces the island's fascinating Celtic and Viking heritage. It is possible to take a steam train into the mountainous interior, where medieval castles and pretty villages and farms can be observed.

Day 4 - Liverpool

The fast-moving and appealing city of Liverpool sprawls along the banks of the River Mersey. This former bastion of industry in England's north-west has found its second wind, thanks especially to the highly successful redevelopment of its docks, listed as a UNESCO World Heritage site since 2004. The city, the Beatles' birthplace, has lots to offer to its visitors. While a walk down the Waterfront from Pier Head to Albert Dock is a major highlight you'll also love the quality of museums such as the Walker Art Gallery and the wealth of architecture in the city. But what will really impress you is the playful and open-minded spirit of its inhabitants, which John Lennon referred to as "positive energy".

ntic charm.

ITINERARY

Day 1 - Dublin

The Irish capital stretches along the banks of the Liffey to Dublin bay, on the East coast of Ireland. Discover Ireland's warm conviviality in the pedestrian district of Temple Bar. Its cobbled streets are brimming with fabulous shops, pubs and arts centres. Next to Trinity College, famous for its 18th century library, you can stroll along Grafton Street: in one of its famous tea shops, try a delicious scone and clotted cream served hot and melt-in-the-mouth with jam. Not far from here, the majestic O'Connell bridge leads you to the avenue with the same name, on which Spire, a luminous contemporary sculpture presides.

Day 2 - Rothesay, Isle of Bute

Wild Earth Travel

Small Ships, Big Adventures

0800 945 3327 (within New Zealand) | +64 (0) 3 365 1355 | 1800 107 715 (within Australia)

info@wildearth-travel.com | wildearth-travel.com

Wild Earth Travel

Small Ships, Big Adventures

wildearth-travel.com

info@wildearth-travel.com

miss the chance of kissing the "Stone of Eloquence", located at the top of the monument, which legend tells will confer its powers upon you.

Day 5 - Holyhead, Wales

In the north of Wales and in the west of the captivating Isle of Anglesey, succumb to the charms of the enchanting small port town of Holyhead. Often called "the mother of Wales" due to its importance in history, Holyhead is a paradise for anyone with a passion for natural landscapes and heritage. They will love exploring the town's many historical landmarks, among other sites. Among these is Holyhead's 13th-century church, St Cybi's Church, nestling right in the middle of the Roman citadel. Finally, you will be able to admire one of the symbols of the town: South Stack Lighthouse, built in 1809. As you pass near the lighthouse, you might have the chance to marvel at numerous species of seabirds, including guillemots and razorbills.

Day 6 - Bantry

In the hollow of a majestic harbour north of the Durrus Peninsular, in southwestern Ireland, in County Cork, the village of Bantry appears between spectacular cliffs, a fascinating bay and huge expanses of amber-coloured moors. Like a postcard of a wild, preserved and authentic Ireland, this charming small town can be explored via its coastline shredded by the winds and currents, and its small paved streets edged with Georgian- and Victorian-style residences. Fall under the spell of one of the village's emblematic sites, Bantry House. A majestic 17th-century manor house dominating the bay, it will charm you with its architecture, its enchanting French-style gardens and its captivating panoramas.

Day 7 - Cobh

From the very endearing small town of Cobh, you will set out to discover Cork, rich with a history that goes back to Viking times. During our visit here, we invite you to take an exceptional trip to Blarney Castle, dating from 1446 and renowned for its legends and its ancient stones. At the end of your visit, do not

Day 8 - Dublin

The Irish capital stretches along the banks of the Liffey to Dublin bay, on the East coast of Ireland. Discover Ireland's warm conviviality in the pedestrian district of Temple Bar. Its cobbled streets are brimming with fabulous shops, pubs and arts centres. Next to Trinity College, famous for its 18th century library, you can stroll along Grafton Street: in one of its famous tea shops, try a delicious scone and clotted cream served hot and melt-in-the-mouth with jam. Not far from here, the majestic O'Connell bridge leads you to the avenue with the same name, on which Spire, a luminous contemporary sculpture presides.

Please note:

Itineraries are subject to change.

Wild Earth Travel

Small Ships, Big Adventures

0800 945 3327 (within New Zealand) | +64 (0) 3 365 1355 | **1800 107 715** (within Australia)

info@wildearth-travel.com | **wildearth-travel.com**

Wild Earth Travel

Small Ships, Big Adventures



wildearth-travel.com

info@wildearth-travel.com

YOUR SHIP: LE LAPEROUSE

YOUR SHIP:	Le Laperouse
VESSEL TYPE:	Luxury
LENGTH:	127 metres
PASSENGER CAPACITY:	92 cabins
BUILT/REFURBISHED:	2017/2018

Featuring innovative and environmentally-friendly equipment, elegantly designed cabins, spacious suites with large windows, and lounge areas that open onto the outside, this new limited-capacity yacht boasting just 92 cabins and suites will offer you a truly unique cruising experience.

Aboard this ship that flies the French flag, you will experience the incomparable pleasure of an intimate cruise, with the possibility of exploring an ever-increasing range of destinations in an ethnic-chic ambiance with luxury service.

Experience a luxurious setting where the accent is on authenticity and passion for travel.

RESTAURANTS

As it is an essential part of French culture, gastronomy will naturally have pride of place aboard this new ship. Through its two restaurants, Le Laperouse will invite you on a journey to elegance and epicureanism.

In a relaxed atmosphere, a first dining area located on Deck 3 and able to seat 70 will serve grilled meats daily, along with a variety of salads and desserts.

To the back of Deck 4, you will find a 260 m² panoramic restaurant which can accommodate all of our passengers in a

single sitting. Designed differently to that on our other ships, this dining area, which opens onto the outside, will have a buffet of salads, desserts and cheeses at your disposal. Our discreet and attentive crew will provide table service for hot meals.

PUBLIC AREAS

Like Le Boreal and its sisterships, Le Laperouse has many common areas that are designed and equipped to meet all of your needs while preserving the intimacy of each passenger.

A 140 m² reception area includes: A reception/concierge desk, An excursions desk, The ship's administrative services, The sales office, manned by our Guest Relations Officer, Our 50 m² boutique which sells clothing, jewellery, beauty products, postcards and various accessories, Toilets accessible to passengers with reduced mobility.

A new hydraulic platform with adjustable height provides: Easier boarding than on any other cruise ship, Easier Zodiac embarkation and disembarkation for expeditions, Easier access to the sea for swimming and practising various water sports such as kayaking or paddle-boarding.

A pool deck offering: A pool with a panoramic view, equipped with a counter-current swimming system, A pleasant solarium, An outdoor bar and lounge with armchairs and sofas.

A 200 m² main lounge which can accommodate all of our passengers to share convivial moments and to host activities organised during the day or evening.

Lastly, a theatre that seats 188, equipped with: The latest sound and lighting technology, A LED wall as the stage backdrop, for the projection of high-resolution images and videos.

Wild Earth Travel

Small Ships, Big Adventures

0800 945 3327 (within New Zealand) | +64 (0) 3 365 1355 | **1800 107 715** (within Australia)

info@wildearth-travel.com | **wildearth-travel.com**



Wild Earth Travel

Small Ships, Big Adventures



wildearth-travel.com

info@wildearth-travel.com



and videos.



Wild Earth Travel

Small Ships, Big Adventures

0800 945 3327 (within New Zealand) | +64 (0) 3 365 1355 | **1800 107 715** (within Australia)

info@wildearth-travel.com | **wildearth-travel.com**

Wild Earth Travel

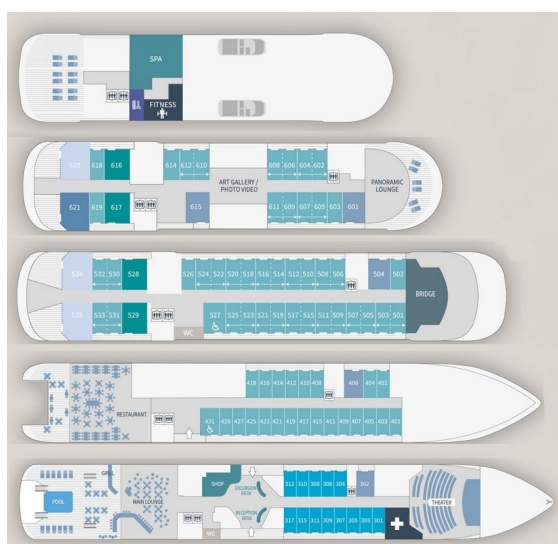
Small Ships, Big Adventures



wildearth-travel.com

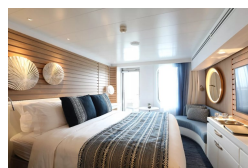
info@wildearth-travel.com

INSIDE YOUR SHIP

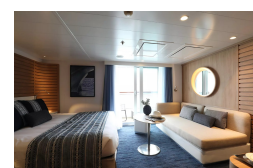


- Owner's Suite Deck 6
- Privilege Suites Deck 5-6
- Grand Deluxe Suites Deck 5-6
- Prestige Suites Deck 5-6
- Deluxe Suites Deck 5-6
- Prestige Cabins Deck 4-5-6
- Deluxe Cabins Deck 3

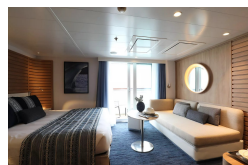
Deluxe Stateroom



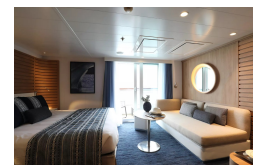
Deluxe Suite Deck 3



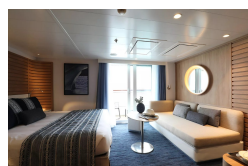
Deluxe Suite Deck 4



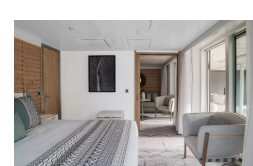
Deluxe Suite Deck 5



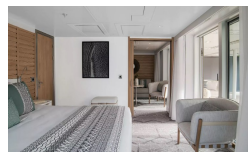
Deluxe Suite Deck 6



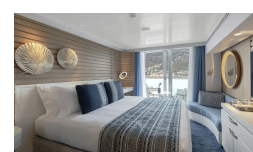
Grand Deluxe Suite Deck 5



Grand Deluxe Suite Deck 6



Prestige Deck 4



Wild Earth Travel
Small Ships, Big Adventures

0800 945 3327 (within New Zealand) | +64 (0) 3 365 1355 | 1800 107 715 (within Australia)

info@wildearth-travel.com | wildearth-travel.com

Wild Earth Travel

Small Ships, Big Adventures

wildearth-travel.com

info@wildearth-travel.com

PRICING

21-Apr-2026 to 28-Apr-2026

Deluxe Stateroom	6250 AUD pp
Prestige Deck 4	6580 AUD pp
Prestige Deck 5	6770 AUD pp
Prestige Deck 6	7030 AUD pp
Deluxe Suite Deck 4	9430 AUD pp
Deluxe Suite Deck 5	9430 AUD pp
Deluxe Suite Deck 6	9430 AUD pp
Deluxe Suite Deck 3	9430 AUD pp
Prestige Deck 5 Suite	10140 AUD pp
Prestige Deck 6 Suite	10460 AUD pp
Privilege Suite Deck 5	10730 AUD pp
Privilege Suite Deck 6	10730 AUD pp
Grand Deluxe Suite Deck 5	11050 AUD pp
Grand Deluxe Suite Deck 6	11050 AUD pp

Wild Earth Travel

Small Ships, Big Adventures

0800 945 3327 (within New Zealand) | +64 (0) 3 365 1355 | **1800 107 715** (within Australia)

info@wildearth-travel.com | **wildearth-travel.com**



Wild Earth Travel

Small Ships, Big Adventures



wildearth-travel.com

info@wildearth-travel.com

SPECIAL OFFERS

Online prices reflect the current brochure fare savings of up to 30%. Prices may change based on demand. Terms and conditions apply. This special offer is subject to availability. Please contact us for more details.



Wild Earth Travel

Small Ships, Big Adventures

0800 945 3327 (within New Zealand) | +64 (0) 3 365 1355 | **1800 107 715** (within Australia)

info@wildearth-travel.com | **wildearth-travel.com**