

Wild Earth Travel

Small Ships, Big Adventures

wildearth-travel.com

info@wildearth-travel.com

WONDERS OF THE CARIBBEAN LUXURY CRUISE

Explore the idyllic waters of the Caribbean Sea, discovering islands of breathtaking beauty, fascinating historic sites and priceless cultural treasures. From the enchanted shores of Guadeloupe to the immaculate beaches of the British Virgin Islands, the landscapes will inspire relaxation, while the majestic forts rise stand on the heights, bearing witness to history and adventure. At each port of call, marvel at the exceptional underwater life and dive into the region's lively culture, between Creole villages, colonial heritage and legends of piracy. An unforgettable journey, where nature and heritage intermingle to immerse you in the treasures of the Caribbean.

An experienced diving instructor, on board throughout the cruise, will enable you to safely indulge in the joys of diving (Level 1 or CMAS 1-star diver or equivalent required).



ITINERARY

Day 1 - Fort-de-France

Located on the western coast of Martinique, Fort-de-France will amaze you by the splendour of its bay, a magnificent cut-out in the coastline, considered as one of the most beautiful in the world. At the harbour mouth, on its strip of land, fort Saint-Louis overlooks the capital city of Martinique. If you climb up to it, you can see some breath-taking views. Saint Louis Cathedral and the Schoelcher library bear witness to a secular history, intimately linked to the island's story. Why not try some fresh coconut at the colourful Grand Marche. Two really pleasant places you can take a breather in, right in the heart of the city, are the garden of Balata and the Aime Cesaire park.

Day 2 - Antigua

Wild Earth Travel

Small Ships, Big Adventures

0800 945 3327 (within New Zealand) | +64 (0) 3 365 1355 | **1800 107 715** (within Australia)

info@wildearth-travel.com | **wildearth-travel.com**



Wild Earth Travel

Small Ships, Big Adventures

wildearth-travel.com

info@wildearth-travel.com

Between white sandy beaches and lush tropical forest, you will discover Antigua, the largest of the two islands that make up Antigua-and-Barbuda, a sovereign Commonwealth state. From its British colonial heritage, this picture-postcard island has kept English as its official language and a pronounced taste for cricket! The steep hillsides of the south of the island offer splendid vistas over English Harbour and the Antigua shipyard, a building dating from the 17th century and a UNESCO World Heritage Site, and over Indian Creek, where the first Awarak Indians settled. To the east, the clear waters of the village of Seatons are the ideal site for snorkelling alongside the rays.

Day 3 - Virgin Gorda

Virgin Gorda is one of the British Virgin Islands archipelago's largest islands. There, you will discover The Spring Bay National Park and its well-renowned picture-postcard beaches. Gigantic volcanic boulders sit surrounded by the turquoise waters of the Caribbean, creating spectacular geological formations. Indeed, over the years a network of basins, caves and natural pools has formed, resulting in a sublime aquatic maze in which it is enjoyable to lose oneself. On the island's south-eastern tip, Copper Mine National Park is still home to many ruins of an abandoned copper mine that looks out over the sea.

Day 4 - Jost Van Dyke

During your cruise, discover the pearl of the British Virgin Islands, said to have been named after a fearsome Dutch pirate from long ago. The hilly landscape offers travellers beautiful wild expanses lined with immaculate beaches where the breeze gently caresses the coconut palms. In this slice of heaven with crystal-clear waters, you will be able to enjoy the lively atmosphere of White Bay. As for the wildlife, iguanas, mongooses, pelicans and blue herons have taken up residence on these islands, much to the delight of our passengers who love a good holiday snap!

Day 5 - Gustavia

Lovers of this island call it Saint-Barth. This French island in the Lesser Antilles was discovered by Christopher Columbus in 1493. Ever since, this tiny mountainous volcanic gem with its unspoilt nature has been enchanting

visitors. You will enjoy the beauty of its large paradisiacal beaches, plus the charm and refinement of its old wooden houses and its sumptuous colonial manors. Although, as you saunter through the rues de Gustavia or Saint-Jean, you'll come across jewellers, top fashion boutiques and fine restaurants, there is also a simplicity that money can't buy...

Day 6 - Deshaies

The port of Deshaies has a magnificent setting on the north-west coast of Basse-Terre Island, the western half of Guadeloupe. Nestling in the crook of a pretty bay on the Caribbean Sea, the village of wooden Creole-style houses extends along the foot of hillsides covered in tropical rainforest. Beyond the bay, the former property of famous French comedian Coluche is now a magnificent botanical garden where you can wander among West Indian trees and flowering plants and spot exotic birds. A little farther to the north is Grande Anse beach, one of most beautiful on the island.

Day 7 - Marie-Galante

It is undoubtedly because Marie-Galante concentrates all the charms of the Caribbean into one island that it is today one of the most in-demand destinations in the region. "The island of 100 mills" or the "great galette" as it is sometimes known, in reference to the form of its 15 km diameter limestone plateau, is surrounded by white sandy beaches that are some of the most beautiful in the Caribbean. In Saint-Louis, you can take the time to bathe in its turquoise waters, relax under the palm trees and almond trees or stroll along the colourful streets of the village.

Day 8 - Fort-de-France

Located on the western coast of Martinique, Fort-de-France will amaze you by the splendour of its bay, a magnificent cut-out in the coastline, considered as one of the most beautiful in the world. At the harbour mouth, on its strip of land, fort Saint-Louis overlooks the capital city of Martinique. If you climb up to it, you can see some breath-taking views. Saint Louis Cathedral and the Schoelcher library bear witness to a secular history, intimately linked to the island's story. Why not try some fresh coconut at the colourful Grand Marche. Two really pleasant places you can take a breather in, right in the heart of the city, are the garden of Balata and the Aime Cesaire park.

Wild Earth Travel

Small Ships, Big Adventures

0800 945 3327 (within New Zealand) | +64 (0) 3 365 1355 | **1800 107 715** (within Australia)

info@wildearth-travel.com | wildearth-travel.com



Wild Earth Travel

Small Ships, Big Adventures



wildearth-travel.com

info@wildearth-travel.com

Please note:

Itineraries are subject to change.

Wild Earth Travel
Small Ships, Big Adventures

0800 945 3327 (within New Zealand) | +64 (0) 3 365 1355 | **1800 107 715** (within Australia)

info@wildearth-travel.com | **wildearth-travel.com**



Wild Earth Travel

Small Ships, Big Adventures

wildearth-travel.com

info@wildearth-travel.com

YOUR SHIP: LE BOUGAINVILLE

YOUR SHIP: Le Bougainville

VESSEL TYPE: Luxury

LENGTH:

PASSENGER CAPACITY: 92 cabins

BUILT/REFURBISHED: 2017/2018

Featuring innovative and environmentally-friendly equipment, elegantly designed cabins, spacious suites with large windows, and lounge areas that open onto the outside, this new limited-capacity yacht boasting just 92 cabins and suites will offer you a truly unique cruising experience.

As the first ship in a new series that remains true to the Ponant spirit, Le Bougainville will embody the unique atmosphere that is the cruise line's hallmark: a subtle blend of refinement, intimacy and comfort.

Aboard this ship that flies the French flag, you will experience the incomparable pleasure of an intimate cruise, with the possibility of exploring an ever-increasing range of destinations in an ethnic-chic ambiance with luxury service.

Experience a luxurious setting where the accent is on authenticity and passion for travel.

RESTAURANTS

As it is an essential part of French culture, gastronomy will naturally have pride of place aboard this new ship. Through its two restaurants, Le Bougainville will invite you on a journey to elegance and epicureanism.

In a relaxed atmosphere, a first dining area located on Deck 3

and able to seat 70 will serve grilled meats daily, along with a variety of salads and desserts.

To the back of Deck 4, you will find a 260 m² panoramic restaurant which can accommodate all of our passengers in a single sitting. Designed differently to that on our other ships, this dining area, which opens onto the outside, will have a buffet of salads, desserts and cheeses at your disposal. Our discreet and attentive crew will provide table service for hot meals.

PUBLIC AREAS

Like Le Boreal and its sisterships, Le Bougainville has many common areas that are designed and equipped to meet all of your needs while preserving the intimacy of each passenger.

A 140 m² reception area includes:

A reception/concierge desk, An excursions desk, The ship's administrative services, The sales office, manned by our Guest Relations Officer, Our 50 m² boutique which sells clothing, jewellery, beauty products, postcards and various accessories, Toilets accessible to passengers with reduced mobility.

A new hydraulic platform with adjustable height provides: Easier boarding than on any other cruise ship, Easier Zodiac embarkation and disembarkation for expeditions, Easier access to the sea for swimming and practising various water sports such as kayaking or paddle-boarding.

A pool deck offering: A pool with a panoramic view, equipped with a counter-current swimming system, A pleasant solarium, An outdoor bar and lounge with armchairs and sofas.

A 200 m² main lounge which can accommodate all of our passengers to share convivial moments and to host activities organised during the day or evening.

Wild Earth Travel

Small Ships, Big Adventures

0800 945 3327 (within New Zealand) | +64 (0) 3 365 1355 | **1800 107 715** (within Australia)

info@wildearth-travel.com | **wildearth-travel.com**



Wild Earth Travel

Small Ships, Big Adventures

wildearth-travel.com

info@wildearth-travel.com

Lastly, a theatre that seats 188, equipped with: The latest sound and lighting technology, A LED wall as the stage backdrop, for the projection of high-resolution images and videos.



and videos.



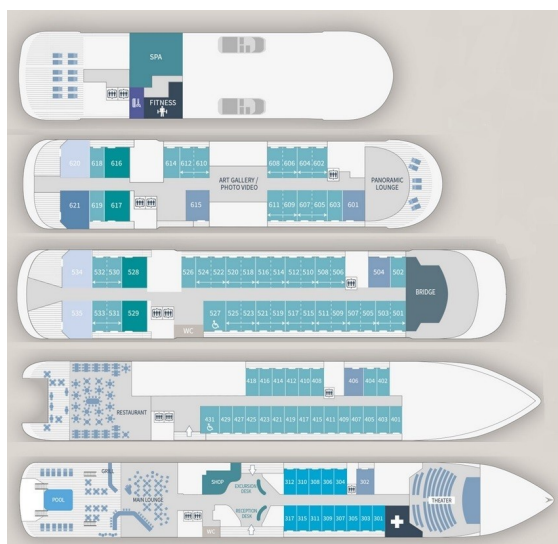
Wild Earth Travel

Small Ships, Big Adventures

0800 945 3327 (within New Zealand) | +64 (0) 3 365 1355 | **1800 107 715** (within Australia)

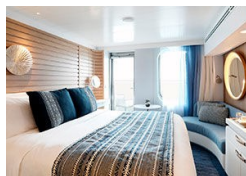
info@wildearth-travel.com | **wildearth-travel.com**

INSIDE YOUR SHIP

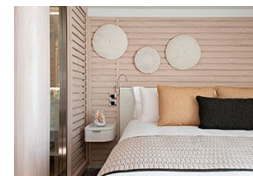


- Owner's Suite Deck 6
- Privilege Suites Deck 5-6
- Grand Deluxe Suites Deck 5-6
- Prestige Suites Deck 5-6
- Deluxe Suites Deck 5-6
- Prestige Cabins Deck 4-5-6
- Deluxe Cabins Deck 3

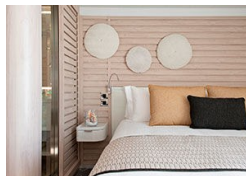
Deluxe Stateroom



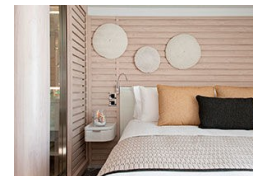
Deluxe Suite Deck 3



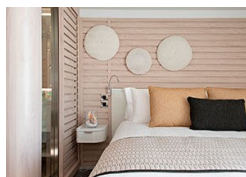
Deluxe Suite Deck 4



Deluxe Suite Deck 5



Deluxe Suite Deck 6



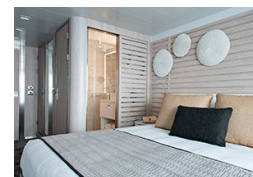
Grand Deluxe Suite Deck 5



Grand Deluxe Suite Deck 6



Prestige Deck 4



Wild Earth Travel

Small Ships, Big Adventures

wildearth-travel.com

info@wildearth-travel.com

PRICING

13-Jan-2027 to 20-Jan-2027

Deluxe Stateroom	6140 AUD pp
Prestige Deck 4	6450 AUD pp
Prestige Deck 5	6640 AUD pp
Prestige Deck 6	6900 AUD pp
Deluxe Suite Deck 5	9240 AUD pp
Deluxe Suite Deck 6	9240 AUD pp
Deluxe Suite Deck 3	9240 AUD pp
Deluxe Suite Deck 4	9240 AUD pp
Prestige Deck 5 Suite	9940 AUD pp
Prestige Deck 6 Suite	10250 AUD pp
Privilege Suite Deck 6	10500 AUD pp
Privilege Suite Deck 5	10500 AUD pp
Grand Deluxe Suite Deck 5	10820 AUD pp
Grand Deluxe Suite Deck 6	10820 AUD pp

Deluxe Stateroom	6140 AUD pp
Prestige Deck 4	6450 AUD pp
Prestige Deck 5	6640 AUD pp
Prestige Deck 6	6900 AUD pp
Deluxe Suite Deck 4	9240 AUD pp
Deluxe Suite Deck 5	9240 AUD pp
Deluxe Suite Deck 6	9240 AUD pp
Deluxe Suite Deck 3	9240 AUD pp
Prestige Deck 5 Suite	9940 AUD pp
Prestige Deck 6 Suite	10250 AUD pp
Privilege Suite Deck 5	10500 AUD pp
Privilege Suite Deck 6	10500 AUD pp
Grand Deluxe Suite Deck 6	10820 AUD pp
Grand Deluxe Suite Deck 5	10820 AUD pp

27-Jan-2027 to 03-Feb-2027



Wild Earth Travel

Small Ships, Big Adventures

wildearth-travel.com

info@wildearth-travel.com

PRICING

10-Feb-2027 to 17-Feb-2027

Deluxe Stateroom	6140 AUD pp
Prestige Deck 4	6450 AUD pp
Prestige Deck 5	6640 AUD pp
Prestige Deck 6	6900 AUD pp
Deluxe Suite Deck 5	9240 AUD pp
Deluxe Suite Deck 6	9240 AUD pp
Deluxe Suite Deck 3	9240 AUD pp
Deluxe Suite Deck 4	9240 AUD pp
Prestige Deck 5 Suite	9940 AUD pp
Prestige Deck 6 Suite	10250 AUD pp
Privilege Suite Deck 5	10500 AUD pp
Privilege Suite Deck 6	10500 AUD pp
Grand Deluxe Suite Deck 6	10820 AUD pp
Grand Deluxe Suite Deck 5	10820 AUD pp



Wild Earth Travel
Small Ships, Big Adventures

0800 945 3327 (within New Zealand) | +64 (0) 3 365 1355 | **1800 107 715** (within Australia)

info@wildearth-travel.com | **wildearth-travel.com**



Wild Earth Travel

Small Ships, Big Adventures



wildearth-travel.com

info@wildearth-travel.com

SPECIAL OFFERS

Online prices reflect the current brochure fare savings of up to 30%. Prices may change based on demand. Terms and conditions apply. This special offer is subject to availability. Please contact us for more details.



Wild Earth Travel

Small Ships, Big Adventures

0800 945 3327 (within New Zealand) | +64 (0) 3 365 1355 | **1800 107 715** (within Australia)

info@wildearth-travel.com | **wildearth-travel.com**