

Wild Earth Travel

Small Ships, Big Adventures

wildearth-travel.com

info@wildearth-travel.com

WINTER ADVENTURE IN LAPLAND - FOR ICE PRINCESSES AND SNOW KINGS

This cruise offers a unique spring adventure in the icy, lesser-known north of the Baltic Sea, featuring active winter experiences like snowshoe hikes, snowmobile safaris, and dog sled rides (shore activities not included). Highlights include exploring the frozen expanses of the Bothnian Sea and Bay, with potential Northern Lights sightings from the deck, and visiting Stockholm and Copenhagen during their quieter off-season. The journey, framed by scenic passages through the Stockholm Archipelago and Kiel Canal, blends expedition-style exploration with the charm of Nordic cities and the thrill of icy landscapes, starting and ending in Hamburg.



ITINERARY

Tue, 17.03.2026 Individual travel arrangements to Hamburg

Departure 18.00 hrs
Evening cruise on the Elbe
Night passage through the Kiel Canal

Wed, 18.03.2026 Relaxation at sea

Cruising off the chalk cliffs of Mon

A real winter with snow and lots of light on long days - simply wishful thinking? Not at the end of March in Swedish and Finnish Lapland. Because while spring is almost upon us at home, the northern Baltic Sea is still icy and snowy. But life is awakening here too, in the middle of a wintry world where the days, which are longer again, are particularly eventful. And on starry nights, there is a good chance of admiring the magical Northern Lights in the sky. Draw on the wealth of experience of the experts on board: they will provide commentary while cruising off the chalk cliffs of Mon, their presentations turning the entire route into a journey of discovery.

Wild Earth Travel

Small Ships, Big Adventures

0800 945 3327 (within New Zealand) | +64 (0) 3 365 1355 | **1800 107 715** (within Australia)

info@wildearth-travel.com | **wildearth-travel.com**

Wild Earth Travel

Small Ships, Big Adventures



wildearth-travel.com

info@wildearth-travel.com

Thu, 19.03.2026 Relaxation at sea

Mon, 23.03.2026 Lulea

Fri, 20.03.2026 Cruising through the Stockholm Archipelago

Tue, 24.03.2026 Lulea, departure 14.00 hrs

Stockholm/Sweden, 9.00 - 19.00 hrs

Departure 14.00 hrs

When cruising through the Stockholm Archipelago, you will find yourself in the middle of a network of 24,000 islands. The deck provides the best views. At this time of year, away from the peak season, you will feel a serenity that makes you see Stockholm with different eyes: take a relaxed stroll through the dreamy old town, explore Stockholm on a city tour¹ or visit the open-air museum Skansen.

Wed, 25.03.2026 Kemi/Finland

7.00 - 19.00 hrs

The Finnish town of Kemi is situated not far from the Arctic Circle. You can experience for yourself how the locals get around on a snowmobile safari¹, on a dog sleigh ride¹ or on a snowshoe hike¹ through deep snow-covered forests and along frozen lakes and rivers. Perhaps you would also like to try your hand at ice fishing¹? Extend your knowledge about life in northern Europe in Rovaniemi¹ on a visit to the Arktikum museum. You will also be amazed by the SnowCastle, a hotel and restaurant that are rebuilt every year.

Sat, 21.03.2026 Expedition day in Bothnian Sea/Bothnian Bay

(depending on the weather and ice conditions)

What awaits you in the northern extension of the Baltic Sea, which is iced over until the end of April? Only a small expedition ship like the HANSEATIC nature, which is suitable for polar regions, can navigate this area. Depending on the weather and ice conditions, a flexible expedition day in the Bothnian Sea and Bothnian Bay lies ahead of you. Enjoy your exclusive front-row seat on the many open deck areas and look forward to spectacular views of the shores of Swedish Lapland.

Thu, 26.03.2026 Oulu

7.00 - 18.00 hrs

Oulu is also popular among outdoor enthusiasts. How about an example? Then take a ride in a reindeer sleigh and on a snowmobile¹ or go cross-country skiing through Finnish Lapland.

Sun, 22.03.2026 Lulea

Arrival 14.00 hrs

Experience the tradition and close relationship with nature of the Sami¹ in snowy Lulea, an ideal starting point for discovering Swedish Lapland on a variety of tours. During a winter experience with huskies¹ or a ride on a fat bike¹ across the ice and snow, the city's surroundings become a real winter adventure for you. Explore the Gammelstad Church Town¹ UNESCO World Heritage Site on a guided tour with insights into the northern Scandinavian past. Alternatively, winter hiking and ice fishing¹ provide a taste of adventure. In clear weather, you will have a good chance of observing the Northern Lights from the deck of your ship.

Fri, 27.03.2026 Expedition day in Bothnian Bay/Bothnian Sea

(depending on the weather and ice conditions)

On the second flexible expedition day in Bothnian Bay and the Bothnian Sea, nature keeps enticing you with new views that are only possible with a small expedition ship like the HANSEATIC nature.

Sat, 28.03.2026 Rauma

Wild Earth Travel
Small Ships, Big Adventures

0800 945 3327 (within New Zealand) | +64 (0) 3 365 1355 | **1800 107 715** (within Australia)

info@wildearth-travel.com | wildearth-travel.com

Wild Earth Travel

Small Ships, Big Adventures



wildearth-travel.com

info@wildearth-travel.com

8.00 - 13.00 hrs

With bobbin lace and picturesque wooden houses, Rauma is a living example of Finnish craftsmanship. You will have the place almost completely to yourself at this time of year. Wind your way through the charming old town that is part of a UNESCO World Heritage Site.

[Sun, 29.03.2026 Relaxation at sea](#)

[Mon, 30.03.2026 Copenhagen/Denmark](#)

8.00 - 17.00 hrs

In keeping with the contented feeling of hygge, explore the Danish capital of Copenhagen on foot with glogg and a pastry. Use the long lay time into the evening to stroll through the charming streets on your own and pay flying visits to the Little Mermaid and Amalienborg Palace.

[Tue, 31.03.2026 Daytime passage through the Kiel Canal](#)

Reflect on your many unforgettable impressions and experiences during the daytime passage through the Kiel Canal with the best views from the many open deck areas of marshes, forests and meadows.

[Wed, 01.04.2026 Hamburg](#)

Arrival 7.00 hrs

Individual travel arrangements from cruise arrival point

Please note:

Itineraries are subject to change.

Wild Earth Travel
Small Ships, Big Adventures

0800 945 3327 (within New Zealand) | +64 (0) 3 365 1355 | **1800 107 715** (within Australia)

info@wildearth-travel.com | **wildearth-travel.com**

Wild Earth Travel

Small Ships, Big Adventures

wildearth-travel.com

info@wildearth-travel.com

YOUR SHIP: HANSEATIC INSPIRATION/NATURE/SPIRIT

YOUR SHIP:	Hanseatic
VESSEL TYPE:	Inspiration/Nature/Spirit
LENGTH:	138 m
PASSENGER CAPACITY:	230
BUILT/REFURBISHED:	2021

The HANSEATIC inspiration, a small, state-of-the-art expedition ship with a maximum of 230 guests, offers a perfect blend of adventure and comfort for explorers seeking to uncover the world's wonders. As an international vessel conducting cruises in both English and German, it brings over 30 years of expertise from a market leader in German-speaking countries to every journey. Each expedition is a masterpiece, passionately crafted to reveal far-flung worlds--be it icy realms, tropical paradises, wildlife havens, or cultural gems--making every voyage a unique discovery aboard this exceptional ship.

Features of all cabins and suites

An ocean view with even more: exclusively outside cabins and suites, almost all with balconies or French balconies

Spaciously designed - enjoy a relaxing stay in rooms from 21 m²/226 ft² up to 71 m²/764 ft² in size

Exceptionally equipped - for example, with binoculars, Nordic Walking poles, air conditioning, coffee machine and mini bar (free of charge) and 24-hour cabin service

Separable beds

Rain shower and heated wall in bathroom (e.g. for towels and

wet parkas)

Extensive infotainment with live broadcast and recordings of expert presentations, forwardview camera, navigation chart, films and much more

Restaurants

Aboard the HANSEATIC inspiration, a new kind of freedom blends adventure and pleasure with a culinary journey across three exceptional restaurants. The spacious HANSEATIC Restaurant offers flexible mealtimes and a free choice of seating, serving a daily-changing menu of global flavors inspired by local specialties, paired with fine wines and supported by attentive 24-hour cabin service. At the Lido Restaurant, guests can savor breakfast under the open sky or enjoy a perfectly grilled steak from the outdoor barbecue, complete with panoramic views and an open show kitchen. The specialty restaurant Nikkei fuses fine Japanese creations with modern Peruvian cuisine, delivering a unique dining experience that elevates exploration to new heights--all while bars in the Observation Lounge and HanseAtrium offer favorite drinks against stunning backdrops, from Nordic fjords to icy Antarctic vistas.

Fitness and Wellness

On the HANSEATIC inspiration, an extraordinary time out awaits after thrilling Zodiac rides, challenging hikes, or Arctic adventures. Unwind in the Ocean Spa, where a Finnish sauna with stunning ocean views, a gentle steam sauna, an ice fountain, and a relaxation room rejuvenate your senses, complemented by professional massages, cosmetic treatments, and eco-friendly products made from natural, vegan ingredients.

Wild Earth Travel

Small Ships, Big Adventures

0800 945 3327 (within New Zealand) | +64 (0) 3 365 1355 | **1800 107 715** (within Australia)

info@wildearth-travel.com | **wildearth-travel.com**

Wild Earth Travel

Small Ships, Big Adventures



wildearth-travel.com

info@wildearth-travel.com

Stay active in the 100 m² fitness room or separate course room--both with ocean vistas--guided by a fitness coach offering personalized advice and a variety of courses, either indoors or on deck. The pool area, with its flexible canopy, invites relaxation year-round, featuring water loungers, a whirlpool, and a bar, ensuring a perfect blend of indulgence and revitalization against the backdrop of the open sea.

Knowledge

Shore excursions and Zodiac rides come alive with deeper context through fascinating presentations in the HanseAtrium, a high-tech lounge where experts share daily precaps and recaps, doubling as an atmospheric evening bar for films and discussions. The Ocean Academy enhances the journey with a Study Wall and interactive poster of scientific insights, microscopes for exploring hidden wonders alongside experts, and Study Seats--with swivel touchscreens--for personal dives into science. Supported by travel diaries and destination videos, this immersive experience broadens horizons with cutting-edge tools and expertise.



expertise.

Wild Earth Travel

Small Ships, Big Adventures

0800 945 3327 (within New Zealand) | +64 (0) 3 365 1355 | **1800 107 715** (within Australia)

info@wildearth-travel.com | **wildearth-travel.com**

Wild Earth Travel

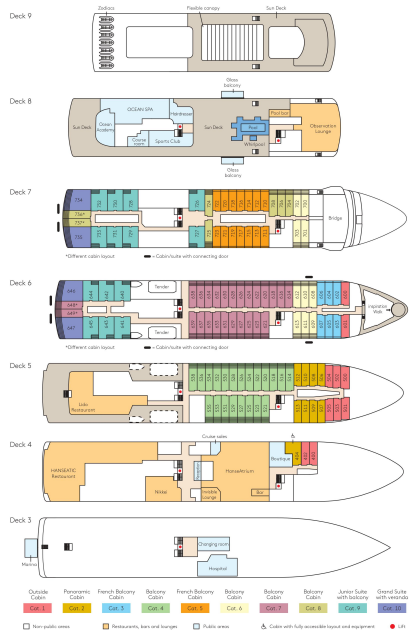
Small Ships, Big Adventures

wildearth-travel.com

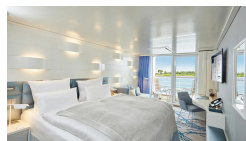
info@wildearth-travel.com

INSIDE YOUR SHIP

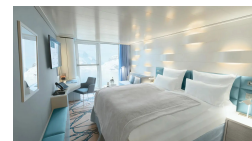
Deck plan HANSEATIC inspiration



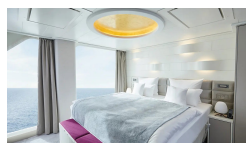
Balcony Cabin



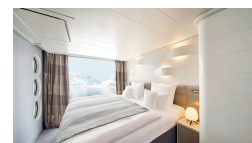
French Balcony Cabin



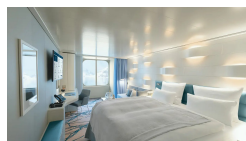
Grand Suite



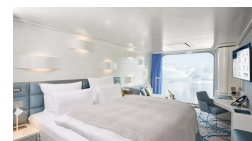
Junior Suite



Outside Cabin



Panoramic Cabin





Wild Earth Travel

Small Ships, Big Adventures



wildearth-travel.com

info@wildearth-travel.com

PRICING

17-Mar-2026 to 01-Apr-2026

Outside Cabin	7990 EUR pp
Panoramic Cabin	7990 EUR pp
French Balcony Cabin	8990 EUR pp
Balcony Cabin	9590 EUR pp
Junior Suite	16840 EUR pp
Grand Suite	24020 EUR pp

Wild Earth Travel

Small Ships, Big Adventures

0800 945 3327 (within New Zealand) | +64 (0) 3 365 1355 | **1800 107 715** (within Australia)

info@wildearth-travel.com | **wildearth-travel.com**