

Wild Earth Travel

Small Ships, Big Adventures

wildearth-travel.com

info@wildearth-travel.com

WILD ISLANDS & LANDS OF LEGENDS EXPEDITION CRUISE

Embark on a captivating journey through the British Isles, starting in Edinburgh and venturing into the Orkney and Shetland archipelagos. Explore the ancient treasures of Orkney, including the impressive St Magnus Cathedral, and witness the diverse birdlife on Fair Isle. Lerwick's historic town and the remarkable archaeological sites on Mainland Shetland add cultural depth to the expedition.

Continue the adventure to the remote islands of Papa Stour and Foula, where birdwatching and rich folklore await. The Faroe Islands, designated as "authentic and unspoiled," offer stunning landscapes, Viking heritage, and a visit to the capital, Torshavn. Concluding with a day at sea filled with onboard lectures, the expedition concludes in Edinburgh, leaving travelers with a profound appreciation for the unique history, culture, and natural wonders of the British Isles.

Our Reservation Specialist Ellen went on this trip in 2024, to talk to her about it please email

ellen@wildearth-travel.com



ITINERARY

Day 1: Arrival in Edinburgh, Scotland (hotel night)

Welcome to Edinburgh, the capital of Scotland and starting point of our expedition. To provide you with more time to enjoy this metropolis rich in history and culture, we've arranged pre-cruise hotel accommodations. Relax and take a stroll through town, enjoying both medieval and classic 18th-century architecture. The famous Edinburgh Castle rises majestically above it all.

Day 2: Welcome Aboard!

Enjoy the morning and early afternoon at leisure. Each corner of Edinburgh's old streets opens beautiful unexpected vistas of green hills or a blue flash of the distant sea. In the afternoon, you will be transferred from the hotel to the ship in the nearby Port of Leith. Before dinner, there's time to explore the Sea Spirit, your home-away-from home for the next days.

Wild Earth Travel

Small Ships, Big Adventures

0800 945 3327 (within New Zealand) | +64 (0) 3 365 1355 | 1800 107 715 (within Australia)

info@wildearth-travel.com | wildearth-travel.com

Wild Earth Travel

Small Ships, Big Adventures



wildearth-travel.com

info@wildearth-travel.com

Day 3: Kirkwall

Kirkwall is a small, quiet town, with a gentle pace of life. The town is the capital of the remote and amazing Orkney archipelago. Kirkwall is first mentioned in Orkneyinga saga in 1046. Such a long history has left a rich heritage that we explore today. The most famous are the sandstone St Magnus Cathedral, considered the finest medieval building in the north of Scotland, the Bishop's Palace and the Earl's Palace.

Included tour "Ancient treasures of Orkney with St Magnus Cathedral." Depart Kirkwall and head into the west of Mainland, Orkney's largest island. This tour passes through the gentle rolling landscape of Orkney and into the Neolithic Heartland of Orkney; an area designated as a World Heritage Site due to its wealth of pre-historic archaeology. Passing the Standing Stones of Stenness, we will stop at the Ring of Brodgar; a huge ceremonial circle of stones dating back almost 5000 years. We then continue on to the 5000-year-old village of Skara Brae, beautifully interpreted in the visitor centre. See the remarkable dwellings revealed from beneath the sand dunes by storms only 150 years ago.

Hear some of the stories from your guide today en route back to Kirkwall. Once back in the island capital we will take a tour of St Magnus Cathedral, built by the Vikings during their 500 year reign over the islands.

Day 4: Fair Isle, Shetland Islands

On Fair Isle--an isolated island of rolling moorlands and rugged coastlines--one is easily enchanted by historic crofts, picturesque lighthouses, and friendly locals. The island is famous among birders for its abundance of British birds and for its numerous records of eastern rarities and migrants. Fair Isle is also one of Europe's best places to watch seabirds, especially puffins, at close range. Additionally, the island is notable for the abundance and diversity of its wildflowers. Seals are also commonly seen in its bays. Finally, during our visit it will be possible to see and purchase articles hand-knitted in the intricate and distinctive style for which Fair Isle has been celebrated for hundreds of years.

Day 5: Lerwick

We come alongside at the port of Lerwick; on Mainland, the largest of the

Shetland Islands. On a walking tour of this historic town we visit the award-winning Shetland Museum to learn all about Shetland's fascinating heritage and culture. From here we take a scenic overland coach ride through the fertile countryside of Dunrossness to discover Shetland's best destinations. Birders will relish the opportunity to visit the historic lighthouse at Sumburgh Head, the southernmost point of Mainland Shetland. These rugged cliffs attract thousands of seabirds and the grassy slopes above are particularly great for enjoying close encounters with puffins amongst beautiful wildflowers. Also on the itinerary is Jarlshof, one of the most remarkable archaeological sites in the British Isles. Here we discover beautifully preserved stone structures spanning 5,000 years of human settlement, including Bronze Age oval houses, Pictish wheelhouses, an Iron Age broch, a Viking longhouse and a mediaeval farmhouse.

Day 6: Papa Stour & Foula

Lost in the Atlantic Ocean, Foula, one of the Shetland Islands, is a perfect destination for birdwatching. Foula cliffs are home to numerous seabirds, including the largest colony of great skuas in Great Britain. However, birds are not the only treasure of the island. Foula is rich with folklore and history.

Another item on our bucket list today is Papa Stour, another island, which forms part of the Shetland islands.

Erosion of Papa Stour's soft volcanic rocks has sculptured an extraordinary cliff scenery including a variety of caves, stacks, arches and blowholes, all supporting a range of marine flora and fauna.

Day 7-10: Faroe Islands

National Geographic Traveler had designated Faroe Islands as "authentic, unspoiled and likely to remain so". It seems that the Nature spares no colours in "painting" the islands. Deep-green hills, bright blue sea, colourful houses and boats, orange-red puffins' beaks make the sceneries unforgettable, meanwhile traditional wooden dwellings with turf roofs look like they belong in a fairy tale.

The rugged Faroese are proud of their Viking heritage and their love of the sea. We will explore the archipelago including Torshavn, the capital and largest city of Faroe Islands. This would include a visit to Kirkjubøur, the ecclesiastical and cultural center of the Faroes in the Middle Ages. It was the site of the Bishop's residence until the Reformation, when the Faroese diocese was abolished. The

Wild Earth Travel

Small Ships, Big Adventures

0800 945 3327 (within New Zealand) | +64 (0) 3 365 1355 | **1800 107 715** (within Australia)

info@wildearth-travel.com | **wildearth-travel.com**

Wild Earth Travel

Small Ships, Big Adventures



wildearth-travel.com

info@wildearth-travel.com

imposing Gothic ruin of the late 13th-century Saint Magnus Cathedral still dominates the site. The Roykstovan, standing on the wide, stone foundation of a portion of the Bishop's palace, has been the home of farmers in Kirkjubøur for centuries and occupied by the same Faroese family for 17 generations.

Our expedition team will search for remote areas of the archipelago to visit or pause, where we can take advantage of the ship and possibly Zodiacs to see bird cliffs and other natural wonders that are otherwise difficult to access.

Day 11: At Sea

Do not lose your time aboard! Learn more about the unique flora and fauna of the British Isles. Become a real expert in no time with our onboard lectures and briefings!

Day 12: Disembarkation in Edinburgh, Scotland

After breakfast on board Sea Spirit we say farewell in Leith, Edinburgh's vibrant port district. We provide transfers to the airport or to Edinburgh city center if you wish to spend more time in the wonderful capital of Scotland.

Please note:

Itineraries are subject to change.

Wild Earth Travel

Small Ships, Big Adventures

0800 945 3327 (within New Zealand) | +64 (0) 3 365 1355 | **1800 107 715** (within Australia)

info@wildearth-travel.com | **wildearth-travel.com**

Wild Earth Travel

Small Ships, Big Adventures

wildearth-travel.com

info@wildearth-travel.com

YOUR SHIP: SEA SPIRIT

| | |
|----------------------------|------------------------------|
| YOUR SHIP: | Sea Spirit |
| VESSEL TYPE: | Small Ship Expedition |
| LENGTH: | 90 metres |
| PASSENGER CAPACITY: | 114 |
| BUILT/REFURBISHED: | 1992 / 2017 |

Like some of the birds we see in the Arctic and Antarctica, our m/v Sea Spirit is migratory and follows the sun, northbound in the summer and southbound in the winter, always ready for spontaneous discoveries - a pod of whales, a family of polar bears or a glaciated mountain vista. She is highly maneuverable and capable of navigating the narrow fjords of East Greenland and entering the small bays of Spitsbergen.

Onboard, we create a friendly and welcoming atmosphere for all our guests. They are united by one goal - to have a memorable wilderness experience and to become real polar adventurers. We believe that first-hand travel to such places makes one an ambassador for conservation, and helps strengthen our resolve to protect these natural environments for future generations.

Public areas include: Reception, Restaurant, Bar, Outdoor Bistro, Club Lounge, Library, Presentation Lounge, Infirmary, Gym, Bridge.

We have open Bridge policy. Talk to the Captain and officers. Watch landscapes from this special angle of view. Fix your location at a map of your expedition.



Wild Earth Travel

Small Ships, Big Adventures

0800 945 3327 (within New Zealand) | +64 (0) 3 365 1355 | **1800 107 715** (within Australia)

info@wildearth-travel.com | wildearth-travel.com

Wild Earth Travel

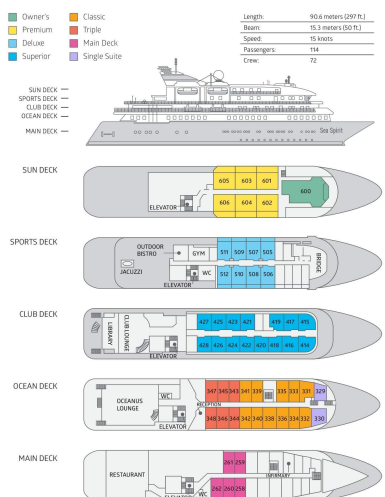
Small Ships, Big Adventures

wildearth-travel.com

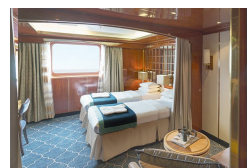
info@wildearth-travel.com

INSIDE YOUR SHIP

DECK PLAN M/V SEA SPIRIT



Classic Suite



Deluxe Suite



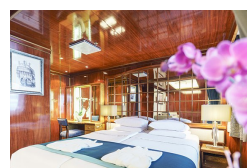
Main Deck Suite



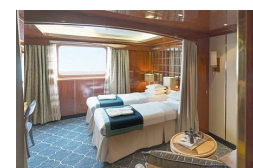
Owner's Suite



Premium Suite



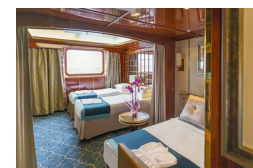
Single Suite



Superior Suite



Triple Classic



Wild Earth Travel

Small Ships, Big Adventures

wildearth-travel.com

info@wildearth-travel.com

PRICING

17-May-2026 to 28-May-2026

| | |
|------------------------|---------------------|
| Triple Classic | 9995 AUD pp |
| Main Deck Suite | 13495 AUD pp |
| Classic Suite | 14495 AUD pp |
| Superior Suite | 14795 AUD pp |
| Deluxe Suite | 16495 AUD pp |
| Premium Suite | 17995 AUD pp |
| Single Suite | 19995 AUD pp |
| Owner's Suite | 22895 AUD pp |

Optional extras & upgrades

Photography. Free Option

This voyage offers a wealth of subjects for photographers of all levels and interests. Our included photography program gives you the chance to learn and practice your skills alongside a professional photographer. Zoom out to capture dramatic landscapes of sweeping moorland and rugged coastlines or go macro to expose the beauty of flowers. You will get plenty of practice with the special art of architectural photography as well. From historical monuments to colorful puffins, the sights on this voyage will make a photographer out of anyone. Our expert will be there to help you make the most of the bounty in your viewfinder.

Wild Earth Travel

Small Ships, Big Adventures

0800 945 3327 (within New Zealand) | +64 (0) 3 365 1355 | **1800 107 715** (within Australia)

info@wildearth-travel.com | **wildearth-travel.com**