

WILD ALASKA ODYSSEY SMALL SHIP CRUISE

On this unique itinerary aboard our popular M/V Alaskan Dream, you'll embark or disembark in the charming Alaska town of Wrangell. Doing so grants you extended time to delve into a place rarely visited by travelers. Despite its small population and remote location, Alaska Airlines offers daily flights to the town, making it an easy connection from Seattle. The itinerary is largely wilderness based, with a port call in the Alaska Native village of Kake for immersion in the inspiring Tlingit culture.



ITINERARY

Day 1 Sitka



Welcome to beautiful Sitka -- the only community in Southeast Alaska that faces the open ocean waters of the Gulf of Alaska. We encourage you to arrive early and explore the community's rich culture, history, and biodiversity. In the evening after embarkation, unwind and take in breathtaking scenery while keeping an eye out for bald eagles, sea otters, bears, whales, and other wildlife.

Day 2 Chatham Strait/West Admiralty Island

Spend the day exploring remote, Inside Passage wilderness. Hike a rainforest trail featuring towering spruce and hemlock trees and lush undergrowth. Your knowledgeable guide will provide commentary on the indigenous plants and wildlife of the area. Explore Chatham Strait alongside Admiralty Island, a place Tlingit Alaska Natives call Kootznoowoo, which translates to "Fortress of the Bear." This remarkable island is home to the highest density of brown bears in North America and boasts a large population of nesting bald eagles.

Day 3 Glacier Bay National Park

This remarkable national park fjord extends 65 miles, contains tidewater glaciers, and provides pristine habitat for a wide array of wildlife, including both brown and black bears, wolves, mountain goats, Steller sea lions, and humpback whales. The highlight for many is the Margerie or John Hopkins Glaciers, which are known for their dramatic calving displays.

Day 4 Wilderness Exploration

Your captain and expert expedition team will select the day's remote wilderness adventure based on factors like weather and wildlife sightings in the area. Whether you're lacing up your boots for a wilderness hike or beach trek, or grabbing a paddle to navigate remote shorelines, one thing's for sure: you're in for an unforgettable Alaska adventure that is tailor-made for your group.

Day 5 Tracy or Endicott Arm

Journey through Tracy or Endicott Arm in the Tracy Arm-Fords Terror Wilderness,

a place the famous naturalist, John Muir, referred to as, "A wild, unfinished Yosemite." Renowned for its glaciers, pristine waterfalls, towering icebergs, abundant harbor seals, and granite cliffs that rise from sea level to 4,000 feet, this wilderness is often referred to by locals as one of the most scenic areas in the state.

Day 6 Kake/Frederick Sound

View the world's tallest totem pole, an artist demonstration, and experience the inspiring culture of the Tlingit in the Alaska Native village of Kake. Later, explore the Alaska wilderness in picturesque Frederick Sound -- an area humpback whales and other wildlife frequent. Humpbacks are famous for behavior that lends itself to incredible viewing and photography, such as tail lobbing, lunge feeding, pectoral slapping, breaching, and graceful dives that showcase their massive flukes. Other opportunities for in-depth exploration may include the protected waters or shores of Security Bay, Skanax Bay, Pybus Bay, and The Brothers islands.

Day 7 Wilderness Exploration

The final full day of your expedition includes an opportunity for a remote hike in the heart of the Alaska wilderness and more unscripted adventure. One of the major hallmarks of an Alaskan Dream Cruises experience is our flexibility. "Wilderness Exploration" days carry an exciting and unique spirit of adventure and discovery aboard a nimble vessel that is ideal for delving deep into places few Alaska travelers get to experience.

Day 8 Wrangell

Disembark in the beautiful community of Wrangell. Transportation to your hotel or the airport is complimentary on the day of disembarkation. We encourage you to spend some time exploring this charming, small town.

Please note:

Itineraries are subject to change.



wildearth-travel.com

info@wildearth-travel.com

YOUR SHIP: ALASKAN DREAM

YOUR SHIP:	Alaskan Dream
VESSEL TYPE:	Expedition Motor Catamaran
LENGTH:	35 meters
PASSENGER CAPACITY:	40 (in twin cabins)
BUILT/REFURBISHED:	1980 / 2011

At 104 feet in length, the Alaskan Dream's innovative, streamlined catamaran design allows the vessel to easily navigate narrow channels and passages. All cabins feature extra-large viewing windows. The Vista View lounge faces forward with the same view as the captain, affording spectacular views of the scenery, ports, and wildlife along the way.



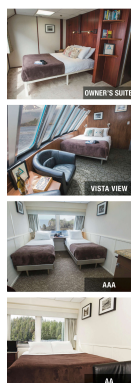
Wild Earth Travel

Small Ships, Big Adventures

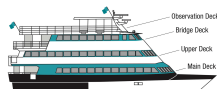
wildearth-travel.com

info@wildearth-travel.com

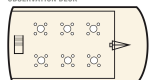
INSIDE YOUR SHIP



ALASKAN DREAM



OBSERVATION DECK



BRIDGE DECK



UPPER DECK



MAIN DECK



SHIP SPECIFICATIONS

Passengers: 40+
Length: 104 feet
Staterooms: 20
Cruising Speed: 13 knots

STATEROOMS/CATEGORIES

Owner's Suite: One queen bed, large picture windows, wardrobe, private bathroom with shower. Approx. 208 sq. ft.
*Select cabins can accommodate 2nd or 4th guests



Vista View: One queen bed with side and forward views from large windows. Comfortable sitting area, private bathroom with shower. Approx. 147 sq. ft.



AAA: One queen bed or two twin beds, large picture windows, wardrobe, private bathroom with shower. Approx. 125 sq. ft.
*Select cabins can accommodate 2nd or 4th guests



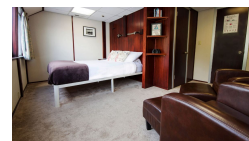
AA: One queen bed or two twin beds, picture windows, wardrobe, private bathroom with shower. Approx. 104 sq. ft.
*Select cabins can accommodate 2nd guest



Category AA



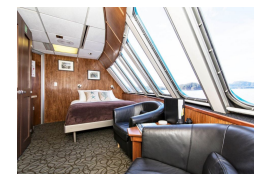
Owner's Suite



Category AAA



Vista View





PRICING

17-Aug-2025 to 24-Aug-2025

Category AA	5695 USD pp
Category AAA	6295 USD pp
Owner's Suite	7895 USD pp
Vista View	9495 USD pp

24-Aug-2025 to 31-Aug-2025

Category AA	5695 USD pp
Category AAA	6295 USD pp
Owner's Suite	7895 USD pp
Vista View	9495 USD pp

14-Jun-2026 to 21-Jun-2026

Category AA	5895 USD pp
Category AAA	6495 USD pp
Owner's Suite	8195 USD pp
Vista View	9795 USD pp

21-Jun-2026 to 28-Jun-2026

Category AA	5895 USD pp
Category AAA	6495 USD pp
Owner's Suite	8195 USD pp
Vista View	9795 USD pp

09-Aug-2026 to 16-Aug-2026

Category AA	5895 USD pp
Category AAA	6495 USD pp
Owner's Suite	8195 USD pp
Vista View	9795 USD pp

16-Aug-2026 to 23-Aug-2026

Category AA	5895 USD pp
Category AAA	6495 USD pp
Owner's Suite	8195 USD pp
Vista View	9795 USD pp