

Wild Earth Travel

Small Ships, Big Adventures

wildearth-travel.com

info@wildearth-travel.com

WESTERN GALAPAGOS ISLANDS WITH PASSION

Embark on a captivating journey through the Galapagos Islands, starting with Baltra and Santa Cruz. Delve into the conservation efforts at Darwin Station, explore the lush Highlands, and marvel at the geological wonders of Los Gemelos. On Floreana, visit Pta. Cormorant, Asilo de la Paz, and Post Office Bay, immersing yourself in the island's rich history. Isabela awaits with the volcanic landscapes of Pta. Moreno, the diverse marine life at Urbina Bay, and the historic Tagus Cove. Fernandina beckons with Pta. Espinoza, showcasing unique wildlife. Santiago Island enchants with Pto. Egas, Buccaneer's Cove, Espumilla Beach, and the otherworldly Sullivan Bay. Complete your journey at Mosquera and North Seymour, where diverse landscapes and wildlife encounters make for an unforgettable Galapagos adventure.



ITINERARY

Day 1 (Saturday): Arrive at Baltra airport / Santa Cruz Island

****Santa Cruz (Indefatigable):**** The largest of the central islands, Santa Cruz is home to many tourist visitor sights and the largest human settlement, Puerto Ayora.

****Highlands of Santa Cruz:**** Galapagos giant tortoises can be seen in the wild in the highlands of Santa Cruz.

****Charles Darwin Station:**** Visit the Charles Darwin Station research facility and National Park Information center. The Charles Darwin Station has a giant tortoise and land iguana breeding program and interpretation center.

Day 2 (Sunday): Floreana Island

Wild Earth Travel

Small Ships, Big Adventures

0800 945 3327 (within New Zealand) | +64 (0) 3 365 1355 | 1800 107 715 (within Australia)

info@wildearth-travel.com | wildearth-travel.com



Wild Earth Travel

Small Ships, Big Adventures

wildearth-travel.com

info@wildearth-travel.com

Floreana (Charles) Island is best known for its colorful history of buccaneers, whalers, convicts, and early colonists.

****Punta Cormorant:**** Punta Cormorant has two contrasting beaches and a large inland lagoon where pink flamingoes can be seen.

****Devils Crown:**** This is a snorkeling site located just off Punta Cormorant. The site is a completely submerged volcano that has eroded to create the appearance of a jagged crown.

****Asilo de la Paz:**** In the highlands of Floreana Island we will find a freshwater spring where historically was a hideout for the pirates, and whalers.

Day 3 (Monday): Floreana Island

****Post Office Bay:**** This is one of the few sites visited for its human history. Visit the wooden mail barrel where letters are dropped off and picked up and see the remains of the Norwegian fishing village.

****Day Time Navigation:**** This is an excellent time to keep an eye out for whales and dolphins. Furthermore, enjoy the landscape of Isabela Island.

Day 4 (Tuesday): Isabela Island

****Isabela Island (Albemarle):**** The largest of the Galapagos Islands formed by five active volcanoes fused together. Wolf Volcano is the highest point in the entire Galapagos at 1707m.

****Punta Moreno:**** Located in the central southwestern coast of Isabela Island. The site has spectacular views of volcanoes Alcedo, Sierra Negra and Cerro Azul. Some highlights include impressive lava flows, desolate and pristine landscape, varied and unusual arid zone vegetation.

****Urbina Bay:**** Located at the central-west coast of Isabela Island at the

foothills of Alcedo and Darwin volcanoes. Highlights include the colorful land iguanas, Galapagos Giant tortoises and the coral uplifting from 1954.

Day 5 (Wednesday): Isabela Island / Fernandina Island

Isabela Island (Albemarle)

****Tagus Cove:**** A natural harbor where centuries ago whalers and pirates left their ship's names painted or carved on the rocks. A walk uphill to Darwin's Crater salt-water lake will provide an excellent view.

****Fernandina Island (Narborough):**** Fernandina is the youngest volcanic island and is still active.

****Punta Espinoza:**** A place famous for its large colonies of marine iguanas and as the habitat of unique species like the flightless cormorant, Galapagos penguin, Galapagos hawk, Galapagos snake, among others.

Day 6 (Thursday): Santiago Island

****Santiago Island (James):**** This Island is located between Isabela and Santa Cruz Islands. This Island offers a wide variety of seabirds, marine iguanas and fur seals.

****Puerto Egas:**** A walk along the rocky coastline that will show you a view of some of Galapagos' best tide pools. Some highlights include Sugar loaf volcano, fur seals, oystercatchers, marine iguana colony, and an old salt mine.

****Espumilla Beach:**** This site has a beautiful contrast between the golden beach and the green mangroves. It is also a great site to see flamingos, pintail ducks, green sea turtle nests and the Galapagos Hawk. It is also a good site to go for a cool off swim or a snorkel.

****Buccaneers Cove:**** This site was Charles Darwin's home for 9 days. As well as a resting site for many whalers and pirates. With this rich history Buccaneers Cove is a must see. Enjoy a panga ride or snorkel looking for Galapagos Fur Seals, Brown Noody, Pelicans, and Swallow-tailed Gulls

Wild Earth Travel

Small Ships, Big Adventures

0800 945 3327 (within New Zealand) | +64 (0) 3 365 1355 | **1800 107 715** (within Australia)

info@wildearth-travel.com | **wildearth-travel.com**



Wild Earth Travel

Small Ships, Big Adventures

wildearth-travel.com

info@wildearth-travel.com

Day 7 (Friday): Santiago Island / North Seymour

Santiago Island:

****Sullivan Bay:**** This site is of great geological interest. Highlights: 100-hundred-year-old lava flow field, pahoehoe formations, lava bubbles

****North Seymour Island:**** This flat piece of land originated after an uplifting event thousands of years ago. Small but packed with many animals.

****North Seymour:**** The island is home to endemic Palo Santo trees, colonies of blue-footed boobies, swallow tailed gulls, the magnificent frigate birds, and sealions.

Day 8 (Saturday): Mosquera Island / Baltra Island for return flight to Quito

****Mosquera Island:**** This small beach island is located in the channel between North Seymour Island and Baltra Island.

This white sand beach is home to a healthy sealion colony.

****Baltra Island****

Return flight to Quito or Guayaquil

Please Note:

Itineraries are subject to change.



Wild Earth Travel
Small Ships, Big Adventures

0800 945 3327 (within New Zealand) | +64 (0) 3 365 1355 | **1800 107 715** (within Australia)

info@wildearth-travel.com | **wildearth-travel.com**

Wild Earth Travel

Small Ships, Big Adventures

wildearth-travel.com

info@wildearth-travel.com

YOUR SHIP: PASSION

YOUR SHIP:	Passion
VESSEL TYPE:	Luxury Yacht
LENGTH:	159 feet / 48.5 meters
PASSENGER CAPACITY:	12 (6 cabins)
BUILT/REFURBISHED:	1973/2014

air-conditioned and incredibly spacious.

Originally built as a private luxury yacht, the M/Y Passion has been completely refurbished while still retaining many of its original elegant features such as its rose colored marble bathrooms and teak wood decks that make the vessel one of a kind.

The M/Y Passion, originally named Bellissima (beautiful in Italian) has never been used for tourism before.

This exclusive vessel has ample social areas, a panoramic sky lounge and bar, separate dining room, wonderfully spacious sun decks for al fresco dining and a secluded sun deck with jacuzzi for relaxation and privacy.

Measuring 159 feet (48.5 meters), she stands four decks and boasts an exceptional amount of space for its only 12 passengers.

The ratio of one staff member per guest ensures first class service and the finest gourmet cuisine is served throughout the cruise.

Each of the six ample state cabins has its own private bathroom with bathtub. The VIP and Master suites feature two en-suite bathrooms.

All four staterooms and two suites on board are fully



Wild Earth Travel

Small Ships, Big Adventures

0800 945 3327 (within New Zealand) | +64 (0) 3 365 1355 | **1800 107 715** (within Australia)

info@wildearth-travel.com | **wildearth-travel.com**

Wild Earth Travel

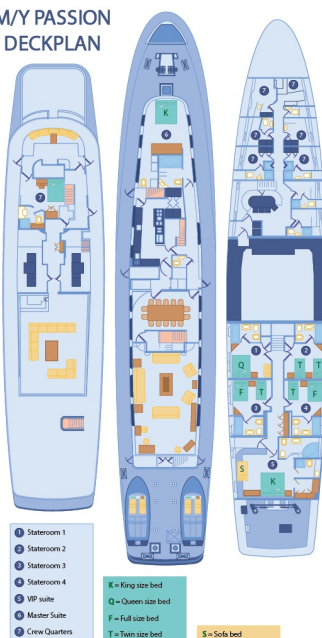
Small Ships, Big Adventures

wildearth-travel.com

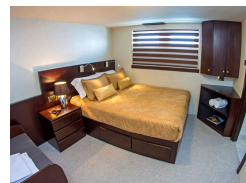
info@wildearth-travel.com

INSIDE YOUR SHIP

M/Y PASSION
DECKPLAN



Cabin. From



Wild Earth Travel

Small Ships, Big Adventures

0800 945 3327 (within New Zealand) | +64 (0) 3 365 1355 | 1800 107 715 (within Australia)

info@wildearth-travel.com | wildearth-travel.com



Wild Earth Travel

Small Ships, Big Adventures

wildearth-travel.com

info@wildearth-travel.com

PRICING

24-May-2025 to 31-May-2025

Cabin. From	8000 USD pp
-------------	-------------

28-Dec-2026 to 04-Jan-2027

Cabin. From	8000 USD pp
-------------	-------------

21-Jun-2025 to 28-Jun-2025

Cabin. From	8000 USD pp
-------------	-------------

ADDITIONAL CHARGES:

**Galapagos National Park entrance
fee. From 220 USD pp**

02-Aug-2025 to 09-Aug-2025

Cabin. From	8000 USD pp
-------------	-------------

16-Aug-2025 to 23-Aug-2025

Cabin. From	8000 USD pp
-------------	-------------

30-Aug-2025 to 06-Sep-2025

Cabin. From	8000 USD pp
-------------	-------------

13-Sep-2025 to 20-Sep-2025

Cabin. From	8000 USD pp
-------------	-------------

27-Sep-2025 to 04-Oct-2025

Cabin. From	8000 USD pp
-------------	-------------

11-Oct-2025 to 18-Oct-2025

Cabin. From	8000 USD pp
-------------	-------------

08-Nov-2025 to 15-Nov-2025

Cabin. From	8000 USD pp
-------------	-------------

06-Dec-2025 to 13-Dec-2025

Cabin. From	8000 USD pp
-------------	-------------

31-Jan-2026 to 07-Feb-2026

Cabin. From	8000 USD pp
-------------	-------------



Wild Earth Travel
Small Ships, Big Adventures

0800 945 3327 (within New Zealand) | +64 (0) 3 365 1355 | **1800 107 715** (within Australia)

info@wildearth-travel.com | **wildearth-travel.com**