



DARWIN'S LEGACY - SOUTH-WESTERN GALAPAGOS ADVENTURE

Fernandina Island is regarded as one of the most pristine island environments anywhere in the world, where life has evolved in its natural state, far from the intervention of Man. From the west we venture back to the Central Islands, landing at the intriguing red beach of Rabida and seeking out the land iguanas of Cerro Dragon. On Santa Cruz, we visit the Charles Darwin Research Station and get up close to giant tortoises in their natural environment. In the south, we learn about the Galapagos very own 'murder mystery', spot flamingoes and snorkel at one of the best sites in the archipelago: Champion Islet. Back in the central islands, we explore the placid bay of Santa Fe as well as the dramatic cliffs of South Plaza. Whether it's the western, central or southern islands we visit, all the crew aboard La Pinta will do our utmost to ensure your Galapagos experience is truly, deeply moving and memorable.



ITINERARY

Day 1 - Friday - Baltra Island and North Seymour Island

Balra Island Our adventure begins with a morning flight to Balra Island and immediate transfer to the dock to board Yacht La Pinta. There's an introductory welcome briefing, boat drill, cabin assignment followed by lunch. North Seymour Island Following an afternoon disembarkation, we enjoy a walk along the coast and the interior of this beautiful flat island, observing numerous bird colonies as well as sea lions and land iguanas. There are opportunities for coastal exploration by dinghy. Evening briefing, welcome cocktail and dinner.

Day 2 Punta Vicente Roca (Isabela Island) and Punta Espinoza (Fernandina Island)

Punta Vicente Roca (Isabela Island) Since there is no landing site at this location, the coastal exploration is by panga, while the naturalist guide explains the dramatic geology of the area, with remains of lava flows and tuff stone layers. There is abundant wildlife and, depending on the conditions of



Wild Earth Travel

Small Ships, Big Adventures

wildearth-travel.com

info@wildearth-travel.com

the ocean, we'll be able to snorkel along the cliffs, hopefully in the company of green sea turtles. Punta Espinoza (Fernandina Island) In the afternoon, we visit the youngest and most pristine island of the archipelago, Fernandina, one of many visitors' all-time favourites. Punta Espinoza has an amazing combination of barrenness and abundant wildlife. Highlights include hawks, penguins, flightless cormorants and astounding views of the surrounding volcanic landscapes.

Day 3 Urbina Bay and Tagus Cove (Isabela Island)

Urbina Bay (Isabela Island) After breakfast, we disembark at Urbina Bay, on the western side of Isabela Island, the result of an uplifting of the ocean floor. Here you can see corals, shells, and large and very colourful Galapagos land iguanas, as well as (occasionally) giant tortoises. Navigating the Bolivar Channel, there are good chances of spotting several species of whales. Tagus Cove (Isabela Island) On the northwest of Isabela, secluded Tagus Cove provided a favourite anchorage for pirates and whalers over the centuries, and today makes a great visitor site. An uphill hike takes us to the back of Darwin Crater, filled with salt water. We can snorkel or ride kayaks amid the dramatic landscape before going on our hike.

Day 4 Rábida Island and Cerro Dragón-Dragon Hill (Santa Cruz Island)

Rabida Island In the morning, we disembark at Rabida Island's red-coloured beach. A stroll along the beach allows us to observe marine iguanas, mockingbirds, yellow warblers and several species of Darwin's finches. This is a great place to snorkel from the beach. For non-snorkelers, we can ride our glass-bottom boat for an exploration of life underneath the waves. Cerro Dragon (Dragon Hill) (Santa Cruz Island) The north shore of Santa Cruz hosts the fascinating landscapes of Cerro Dragon (Dragon Hill). Our walk includes circling a brackish water lagoon frequented by lagoon birds, while further inland, the trail offers a beautiful view of the bay and the western islands of the archipelago, as well as the chance to observe land iguanas.

Day 5 Puerto Ayora, Charles Darwin Research Station and Highlands of Santa Cruz Island

Puerto Ayora & Charles Darwin Research Station The morning visit heads to

the Charles Darwin Research Station and the giant tortoise pens within an impressive giant prickly-pear cactus forest. These are the Galapagos' headquarters of scientific investigation, conservation and the National Park administration. A delicious lunch is served at the poolside of the Finch Bay Eco Hotel. Highlands of Santa Cruz Island After lunch, we head up to the highlands of Santa Cruz Island by vehicle. This is a great place to look for the emblematic Darwin's Finches and the endemic Scalesia trees. The highlands are also great for exploring the exuberant vegetation where giant tortoises roam in the wild. This will surely be one of the most remembered visits of the whole voyage.

Day 6 Post Office Bay & Champion Islet & Punta Cormorant (Floreana Island)

Post Office Bay After breakfast, we land at Post Office Bay to visit the historic barrel that has served as a post office in the archipelago for over two centuries. Panga rides along the maze of channels on Floreana's north shore can also be enjoyed. Views from La Loberia and the Baroness Viewpoint are quite rewarding. There's great kayaking and swimming from the beach as well. Champion Islet & Punta Cormorant (Floreana Island) Before disembarking at Punta Cormorant we can snorkel or ride our glass-bottom boat along the coast of an extinct cone called "Champion Islet". Later in the afternoon, our visit to Punta Cormorant takes in an olivine-crystal beach for an easy walk by a brackish water lagoon where bird species like american flamingos may be observed. On the other side of the island, we come to a white-sand beach where sea turtles come out at night to nest.

Day 7 Baltra

Baltra Island Our journey ends at Baltra Island, where we transfer to the airport to take the flight back to the mainland. Baltra's flat substrate (due to its uplifted origin) is the reason why the island was chosen back in the 1940s as the location to building an airport.

Please Note:

Galapagos Itineraries are subject to change due to weather, logistical, Galapagos Park regulations or operational reasons.

Wild Earth Travel

Small Ships, Big Adventures

0800 945 3327 (within New Zealand) | +64 (0) 3 365 1355 | **1800 107 715** (within Australia)

info@wildearth-travel.com | wildearth-travel.com

Wild Earth Travel

Small Ships, Big Adventures

wildearth-travel.com

info@wildearth-travel.com

YOUR SHIP: LA PINTA

YOUR SHIP:	La Pinta
VESSEL TYPE:	Small Ship
LENGTH:	63 metres
PASSENGER CAPACITY:	48 (in 24 cabins)
BUILT/REFURBISHED:	1983 / 2007 / 2020

The elegant, recently renovated La Pinta reflects the combined dreams shared by captains, crew, guides, and guests over the years. This beautiful 48-guest yacht features spacious cabins with floor-to-ceiling windows and sophisticated yet relaxed decks and lounges.

In one of the world's greatest marine environments, you can be sure your surroundings are front and center. From bow to stern, the elegant and sophisticated La Pinta recently received a full interior makeover and would steal the show anywhere less impressive. Instead, she's the perfect complement to the great outdoors. Floor-to-ceiling windows in the lounge showcase the views with a decor that nods to the nautical. Geared up for adventure play and wildlife, the yacht also has a fun-to-explore expedition room lined with maps and artwork, a canopied terrace, and an alfresco dining area. Her Ecuadorian crew exudes friendliness, fueled by pride in their vessel, the Galapagos Islands, and a desire to share them both. Because some good things are too good to keep secret.

Ship Amenities

Onboard Features include three public decks, on-deck hot tub, exercise room with fitness equipment, expedition room along

with an outdoor sky bar and observation lounge.

The lounge features floor to ceiling windows, the library features historical materials, and the aft covered alfresco dining area also features the hot tub and bar. Perfection.

The Dining Room features open seating. Meals are served at table at set times. Unlimited beverages, alcoholic and non, are included in the price of the cruise. Vegetarian options are always available. Dietary restrictions are happily accommodated with advance notice.

Cabin Features: Floor-to-ceiling view windows; air conditioning; universal docking station; hairdryer, conditioning shampoo, body wash; in-room safe deposit box



deposit box

Wild Earth Travel

Small Ships, Big Adventures

0800 945 3327 (within New Zealand) | +64 (0) 3 365 1355 | **1800 107 715** (within Australia)

info@wildearth-travel.com | **wildearth-travel.com**

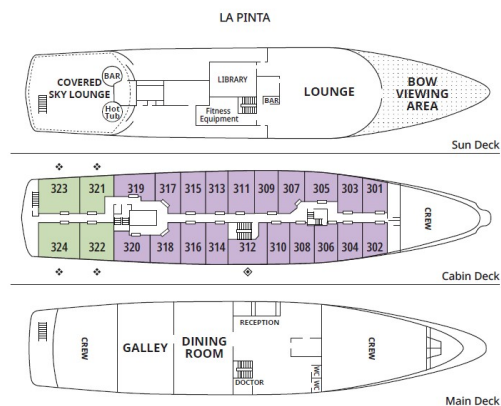
Wild Earth Travel

Small Ships, Big Adventures

wildearth-travel.com

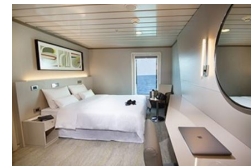
info@wildearth-travel.com

INSIDE YOUR SHIP



Admiral (ADM) ♦ Double or Triple Accommodation
Captain (CPT) ♦ Fixed Queen

Luxury Cabin/Captain Cabin



Wild Earth Travel

Small Ships, Big Adventures

0800 945 3327 (within New Zealand) | +64 (0) 3 365 1355 | 1800 107 715 (within Australia)

info@wildearth-travel.com | wildearth-travel.com

Wild Earth Travel

Small Ships, Big Adventures

wildearth-travel.com

info@wildearth-travel.com

PRICING

20-Jun-2025 to 26-Jun-2025

Luxury Cabin/Captain Cabin	7867 USD pp
More Cabin Categories Available	0 pp

04-Jul-2025 to 10-Jul-2025

Luxury Cabin/Captain Cabin	7867 USD pp
More Cabin Categories Available	0 pp

18-Jul-2025 to 24-Jul-2025

Luxury Cabin/Captain Cabin	7867 USD pp
More Cabin Categories Available	0 pp

01-Aug-2025 to 07-Aug-2025

Luxury Cabin/Captain Cabin	7867 USD pp
More Cabin Categories Available	0 pp

15-Aug-2025 to 21-Aug-2025

Luxury Cabin/Captain Cabin	7867 USD pp
More Cabin Categories Available	0 pp

29-Aug-2025 to 04-Sep-2025

Luxury Cabin/Captain Cabin	7867 USD pp
More Cabin Categories Available	0 pp

12-Sep-2025 to 18-Sep-2025

Luxury Cabin/Captain Cabin	7867 USD pp
More Cabin Categories Available	0 pp

26-Sep-2025 to 02-Oct-2025

Luxury Cabin/Captain Cabin	7867 USD pp
More Cabin Categories Available	0 pp

10-Oct-2025 to 16-Oct-2025

Luxury Cabin/Captain Cabin	7867 USD pp
More Cabin Categories Available	0 pp

24-Oct-2025 to 30-Oct-2025

Luxury Cabin/Captain Cabin	7867 USD pp
More Cabin Categories Available	0 pp

07-Nov-2025 to 13-Nov-2025

Luxury Cabin/Captain Cabin	7867 USD pp
More Cabin Categories Available	0 pp

21-Nov-2025 to 27-Nov-2025

Luxury Cabin/Captain Cabin	7867 USD pp
More Cabin Categories Available	0 pp

05-Dec-2025 to 11-Dec-2025

Luxury Cabin/Captain Cabin	7867 USD pp
More Cabin Categories Available	0 pp

19-Dec-2025 to 25-Dec-2025

Luxury Cabin/Captain Cabin	7867 USD pp
More Cabin Categories Available	0 pp



Wild Earth Travel

Small Ships, Big Adventures



wildearth-travel.com

info@wildearth-travel.com

ADDITIONAL CHARGES:

**Galapagos National Park
admission fee and transit Control
Card for Galapagos 220 USD pp**

Wild Earth Travel
Small Ships, Big Adventures

0800 945 3327 (within New Zealand) | +64 (0) 3 365 1355 | **1800 107 715** (within Australia)

info@wildearth-travel.com | **wildearth-travel.com**