



# Wild Earth Travel

*Small Ships, Big Adventures*

**wildearth-travel.com**

**info@wildearth-travel.com**

## WEST SVALBARD EXPEDITION CRUISE

Discover Breathtaking Svalbard Cruises Spitsbergen is the largest and most beautiful island of the Svalbard archipelago, which consists of two smaller islands, Nordaustlandet and Edgeøya. Mostly, the cruises depart from the administrative center of this area named Longyearbyen. There are many attractions for travelers when choosing a Svalbard cruise. Dive into the world of icy landscapes, arctic climate, and raw nature. Take a chance to see polar ice caps, wild animals, and northern lights in person. As for activities, each voyage becomes truly memorable due to an inspiring photography experience, exciting sea kayaking adventure, and breathtaking views during a challenging hiking trip. What Can You See in Svalbard? Svalbard has a lot of sightseeing to offer travelers. As a former no man's land, it is a gorgeous northern terrain with rich wildlife and breathtaking views. It is easy to meet polar bears and walrus when you go on a Svalbard expedition cruise.



### ITINERARY

#### Day 1: Arrival in Longyearbyen, Svalbard (hotel night)

Welcome to Longyearbyen, the administrative center of Svalbard and starting point of our Arctic expedition! At the Longyearbyen airport, you will be greeted by our staff and transferred to a quality hotel, which has been arranged by us and is included in the price of the itinerary. You will then be free to explore the charming, walkable town center.

We recommend starting your discovery of this fascinating Norwegian High Arctic territory at the excellent Svalbard Museum, where you can also purchase hard-to-find polar books and maps. Afterward, you can enjoy an excellent dinner at one of Longyearbyen's many delightful restaurants. If you are still awake at midnight, you will notice the sun has not set. In fact, the sun will not set for the entire duration of our time in Svalbard.

#### Day 2: Welcome Aboard!

Wild Earth Travel  
*Small Ships, Big Adventures*

**0800 945 3327** (within New Zealand) | +64 (0) 3 365 1355 | **1800 107 715** (within Australia)

info@wildearth-travel.com | wildearth-travel.com



# Wild Earth Travel

*Small Ships, Big Adventures*

**wildearth-travel.com**

**info@wildearth-travel.com**

Today you have a flight to Longyearbyen, the administrative center of Svalbard and starting point of our Arctic expedition! At the Longyearbyen airport, you will be greeted by our staff and transferred to the pier where we will warmly welcome you aboard the deluxe expedition vessel M/V Sea Spirit. Get settled in your spacious suite and explore the ship that will be your comfortable home during the extraordinary adventure to come. Once underway, a full schedule of events kicks off with informative briefings and introductions from your expedition staff. After the first of many delicious dinners on board, step out onto the open decks to admire the gorgeous scenery in endless evening light as we pass through the wildlife-rich waters of Isfjorden, one of the largest fjords in Svalbard.

## Day 3-9: West Svalbard and Polar Ice Edge

The itinerary for this voyage focuses on the spectacular fjords, coasts and islands of western Spitsbergen, the main island of the Svalbard archipelago. This area contains Svalbard's most impressive scenery and some of the Arctic's best wildlife viewing opportunities. Our exact schedule and route will be shaped by the weather and ice conditions we encounter. Polar bears and other iconic Arctic animals can be spotted at anytime, anywhere in our area of exploration. One of the pristine natural areas on this itinerary is South Spitsbergen National Park, a vast region of varied landscapes including polar deserts and impassable mountain ranges. The centerpiece of this park is Hornsund, a picture-perfect fjord where countless mighty glaciers cascade from soaring mountaintops into icy inlets. At this time of year, we are sure to encounter fast ice—that is, sea ice that is fastened to the shore. This situation offers an excellent chance of observing polar bears on the hunt for ringed seals. The park also includes the southern shores of Bellsund, a picturesque bay where we find the remains of historical whaling operations, including wooden boats, cabins and thousands of whale bones—a scene from the distant past, literally frozen in time. This area also offers great hiking opportunities through landscapes rich with Arctic flora and birdlife, as well as fascinating geology. Also on our route is Northwest Spitsbergen National Park, the crown jewel of Svalbard's scenic wonders. Here we find deep fjords flanked by serrated mountain peaks and immense tidewater glaciers calving icebergs into turquoise waters. The whole area is alive with migratory Arctic seabirds. On this voyage, we are just in time to witness the return of millions of murres, guillemots and little auks to the small islands, mountainsides and sea cliffs where they breed within the park. This is also a great area to encounter marine mammals, including various kinds of whales and Arctic seals. Set among this incredible scenery and wildlife activity, we also find evidence of Svalbard's earliest sealers and whalers. Our area of exploration also includes gorgeous

Forlandet National Park. Here we find Prins Karls Forland, one of the best places in Svalbard to observe herds of walrus hauled out on land. Also along the route is North Isfjorden National Park, where we have the chance to observe endemic Svalbard reindeer grazing and Arctic fox romping in lush tundra meadows. Human habitation along our route can be found at Ny Ålesund, a former mining town and airship base that is now home to an international community of Arctic researchers. This is one of the world's most northerly settlements where we find a museum, gift shop and post office. In addition to exploring the terrestrial environment and inshore waterways of western Spitsbergen, we make a special effort to reach the edge of the polar pack ice. At this dynamic boundary between solid sea ice and open ocean, we have an unparalleled opportunity to witness the dramatic interplay between polar bears and seals. We will take the ship as close as safely possible to the jumbled and constantly shifting ice floes in the hope of observing polar bears hunting in their preferred habitat. At this time of year, the ice edge is not far from mainland Spitsbergen and our sailing time in open seas will be relatively short. The West Svalbard and Polar Ice Edge route offers a stunning variety of Arctic landscapes and animals with minimal sailing time between excursions. Every day offers something new and exciting. We will not miss a single opportunity to encounter amazing Arctic wildlife, to witness incredible polar scenery, and to walk in the footsteps of historic expeditions that came before.

## Day 10: Disembarkation in Longyearbyen, Svalbard

After filling up with one last buffet breakfast on board, we bid you farewell in Longyearbyen and provide transfers. By this time, you may already be making plans for your next amazing trip with us into the polar worlds!

### Please Note:

Itineraries are subject to change.

Wild Earth Travel  
*Small Ships, Big Adventures*

**0800 945 3327** (within New Zealand) | +64 (0) 3 365 1355 | **1800 107 715** (within Australia)

info@wildearth-travel.com | wildearth-travel.com



# Wild Earth Travel

*Small Ships, Big Adventures*

**wildearth-travel.com**

**info@wildearth-travel.com**

## YOUR SHIP: SEA SPIRIT

<b>YOUR SHIP:</b>	<b>Sea Spirit</b>
<b>VESSEL TYPE:</b>	<b>Small Ship Expedition</b>
<b>LENGTH:</b>	<b>90 metres</b>
<b>PASSENGER CAPACITY:</b>	<b>114</b>
<b>BUILT/REFURBISHED:</b>	<b>1992 / 2017</b>

Like some of the birds we see in the Arctic and Antarctica, our m/v Sea Spirit is migratory and follows the sun, northbound in the summer and southbound in the winter, always ready for spontaneous discoveries - a pod of whales, a family of polar bears or a glaciated mountain vista. She is highly maneuverable and capable of navigating the narrow fjords of East Greenland and entering the small bays of Spitsbergen.

Onboard, we create a friendly and welcoming atmosphere for all our guests. They are united by one goal - to have a memorable wilderness experience and to become real polar adventurers. We believe that first-hand travel to such places makes one an ambassador for conservation, and helps strengthen our resolve to protect these natural environments for future generations.

Public areas include: Reception, Restaurant, Bar, Outdoor Bistro, Club Lounge, Library, Presentation Lounge, Infirmary, Gym, Bridge.

We have open Bridge policy. Talk to the Captain and officers. Watch landscapes from this special angle of view. Fix your location at a map of your expedition.



Wild Earth Travel

*Small Ships, Big Adventures*

**0800 945 3327** (within New Zealand) | +64 (0) 3 365 1355 | **1800 107 715** (within Australia)

info@wildearth-travel.com | wildearth-travel.com

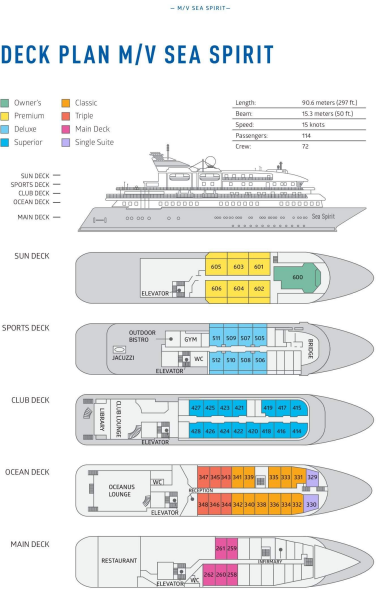


**Wild Earth Travel**  
*Small Ships, Big Adventures*

**wildearth-travel.com**

**info@wildearth-travel.com**

# INSIDE YOUR SHIP



Classic Suite



Deluxe Suite



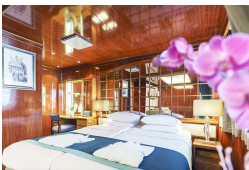
Main Deck Suite



Owner's Suite



Premium Suite



Single Suite



Superior Suite



Triple Classic



**Wild Earth Travel**  
*Small Ships, Big Adventures*

**0800 945 3327** (within New Zealand) | +64 (0) 3 365 1355 | **1800 107 715** (within Australia)

info@wildearth-travel.com | wildearth-travel.com





# Wild Earth Travel

*Small Ships, Big Adventures*

[wildearth-travel.com](http://wildearth-travel.com)

[info@wildearth-travel.com](mailto:info@wildearth-travel.com)

## PRICING

### 07-Jun-2026 to 16-Jun-2026

Triple Classic	9395 USD pp
Main Deck Suite	12795 USD pp
Classic Suite	13695 USD pp
Superior Suite	13995 USD pp
Deluxe Suite	15595 USD pp
Premium Suite	17095 USD pp
Single Suite	18995 USD pp
Owner's Suite	21795 USD pp

### 16-Jun-2026 to 25-Jun-2026

Triple Classic	8295 USD pp
Main Deck Suite	11295 USD pp
Classic Suite	12095 USD pp
Superior Suite	12395 USD pp
Deluxe Suite	13795 USD pp
Premium Suite	15195 USD pp
Single Suite	16895 USD pp
Owner's Suite	19395 USD pp

### Photography - Free option

The Polar Regions are perhaps the most photogenic on earth, with countless beautiful scenes presenting themselves every day. Endless expanses of ice, beaches crowded with seals or penguins, sunsets over unbroken horizons, starlit skies, and even the majestic northern lights – they all present fantastic photographic opportunities – and in order to make sure that you come home with some spectacular images we offer you the chance to learn and practice your photography alongside an experienced professional. Our expert Photographer will be on hand to answer your questions and give advice, both in the form of on-board lectures and workshops on shore. Explore the key elements of photography in a fun and relaxed setting, with plenty of opportunities for questions and feedback. Learn how to see light in a new way and experiment with the techniques of composition and framing.

## Optional extras & upgrades

### Sea Kayaking 795 USD

Sea Kayak Club is typically offered on voyages that include High Arctic destinations such as Greenland, Svalbard (Spitsbergen), Franz Josef Land, or a combination of these thrilling places. Experience calving glaciers in Svalbard, cathedral-like icebergs in Greenland, or labyrinthine expanses of sea ice in the Arctic Ocean, all from our sturdy and stealthy sea kayaks. Join us for an unscripted kayaking adventure as we explore rugged coastlines and remote waters that very few people have ever paddled.



0800 945 3327 (within New Zealand) | +64 (0) 3 365 1355 | 1800 107 715 (within Australia)

[info@wildearth-travel.com](mailto:info@wildearth-travel.com) | [wildearth-travel.com](http://wildearth-travel.com)