



Wild Earth Travel

Small Ships, Big Adventures

wildearth-travel.com

info@wildearth-travel.com

IN THE WAKE OF SCOTT SHACKLETON ABOARD HERITAGE ADVENTURER

The Ross Sea region of Antarctica is one of the most remote places on Planet Earth and one of the most fascinating places in the continent's human history. With shipping restricted by impenetrable pack ice to just two brief months each austral summer, few people have ever visited this strange and beautiful territory, with opportunities for non-scientific personnel limited to a handful of tourist expedition ships. Heritage Expeditions offers such a voyage on its own fully equipped and ice-strengthened ship *Heritage Adventurer*, crewed by some of the most experienced officers and sailors in the world and staffed by a passionate and knowledgeable expedition team. This is a unique opportunity to experience nature on a scale so grand there are no words to describe it, and featured in slow TV documentary *Go Further South*.

The Ross Sea takes its name from Sir James Clark Ross who discovered it in 1841. The British Royal Geographical Society chose the Ross Sea for the now famous British National Antarctic Expedition in 1901-04 led by Robert Falcon Scott. That one expedition spawned what is sometimes referred to as the 'Race to the Pole'. Ernest Shackleton almost succeeded in 1907-09 and the Japanese explorer Nobu Shirase tried in 1910-12. Scott thought it was his, but was beaten by his rival, Norwegian Roald Amundsen in the summer of 1911. Shackleton's Trans-Antarctic expedition in 1914-17 marked the end of this 'heroic' or 'golden age' of exploration, but many of the relics of this era, including some huts, remain. The dramatic landscape described by these early explorers is unchanged. Mt Erebus, Mt Discovery and the Transantarctic Mountains are as

inspiring today as they were 100 years ago. The penguin rookeries described by the early biologists fluctuate in numbers from year to year, but they still occupy the same sites. The seals, which are no longer hunted for food lie around on ice floes seemingly unperturbed. The whales, which were hunted so ruthlessly here in the 1920s, are slowly coming back, but it is a long way back from the edge of extinction, and some species have done better than others. Snow Petrels, Wilson's Storm-Petrels, Antarctic Prions and South Polar Skuas all breed in this seemingly inhospitable environment.

Lying like stepping stones to the Antarctic continent are the little known Subantarctic Islands. Our journey also includes The Snares, Auckland, Macquarie and Campbell Island. They break our long journey, but more importantly, they help prepare us for what lies ahead, for these islands are part of the amazing and dynamic Southern Ocean ecosystem of which Antarctica is at the very heart. It is the powerhouse which drives this ecosystem upon which the world depends. Our January 2025 expedition includes the option to join our first ever sea kayaking excursion in the Ross Sea with an expert guide.



Wild Earth Travel
Small Ships, Big Adventures

0800 945 3327 (within New Zealand) | +64 (0) 3 365 1355 | **1800 107 715** (within Australia)

info@wildearth-travel.com | **wildearth-travel.com**

Wild Earth Travel

Small Ships, Big Adventures

wildearth-travel.com

info@wildearth-travel.com



should make their way to the designated hotel where we will spend the first night of the expedition. This evening there will be an informal get-together at the hotel for dinner; an excellent opportunity to meet fellow adventurers on your voyage and some of our expedition team.

Day 2: Port of Bluff

Today we enjoy breakfast in the hotel restaurant and have the morning free to explore Queenstown before returning to the hotel for lunch and departing for the Port of Bluff to embark your ship. You will have time to settle into your cabin and familiarise yourself with the ship; we will also take the opportunity to conduct a number of safety briefings. You are invited to join the expedition team in the Observation Lounge and up on the Observation Deck as we set our course to The Snares and our adventure begins.

Day 3: The Snares – North East Island

The closest Subantarctic Islands to New Zealand, they were appropriately called The Snares because they were probably considered a hazard by their discoverer Lieutenant Broughton in 1795. Comprising of two main islands and a smattering of rocky islets, they are uninhabited and highly protected. North East Island is the largest of The Snares and it is claimed that this one island is home to more nesting seabirds than all of the British Isles together. We will arrive early in the morning and cruise along the sheltered eastern side of the rugged coastline by Zodiac if weather and sea conditions are suitable (landings are not permitted). In the sheltered bays, we should see the endemic Snares Crested Penguins, Snares Island Tomtit and Fernbirds. Cape Pigeons and Antarctic Terns are also present in good numbers. There are hundreds of thousands of Sooty Shearwaters nesting on The Snares; the actual number is much debated. Around Christmas time each year the Buller's Albatross return here to nest.

Day 4: Auckland Islands – Enderby Island

The Auckland Islands group was formed by two volcanoes which erupted some 10-25 million years ago. They have subsequently been eroded and dissected by glaciation creating the archipelago as we know it today. Enderby Island is one of the most beautiful islands in this group and is named for the distinguished shipping family. This northern most island in the archipelago is an outstanding wildlife and birding location and is relatively easy to land on

port guide.

ITINERARY

Day 1: Queenstown

Arrive at Queenstown, New Zealand's world famous alpine resort town. Guests

Wild Earth Travel

Small Ships, Big Adventures

0800 945 3327 (within New Zealand) | +64 (0) 3 365 1355 | **1800 107 715** (within Australia)

info@wildearth-travel.com | **wildearth-travel.com**



Wild Earth Travel

Small Ships, Big Adventures

wildearth-travel.com

info@wildearth-travel.com

and walk around. The island was cleared of all introduced animals (pests) in 1994 and both birds and the vegetation, especially the herbaceous plants, are recovering both in numbers and diversity. Our plan is to land at Sandy Bay, one of three breeding areas in the Auckland Islands for the Hooker's or New Zealand Sea Lion, a rare member of the seal family. Beachmaster bulls gather on the beach defending their harems and mating with the cows shortly after they have given birth of a single pup. On shore there will be several options, some longer walks, some shorter walks and time to spend just sitting and enjoying the wildlife. The walking is relatively easy, a board walk traverses the island to the dramatic western cliffs from there we follow the coast on the circumnavigation of the island. Birds that we are likely to encounter include the following species: Southern Royal Albatross, Northern Giant Petrel, Auckland Island Shag, Auckland Island Flightless Teal, Auckland Island Banded Dotterel, Auckland Island Tomtit, Bellbird, Pipit, Red-crowned Parakeet, Yellow-eyed Penguin and Light-mantled Sooty Albatross. There is also a very good chance of seeing the Subantarctic Snipe.

Day 5: At Sea

At sea, learn more about the biology and history of the Subantarctic Islands and the Southern Ocean through a series of lectures and presentations. We will be at sea all day, so it is another opportunity to spot pelagic species including (but not limited to) the Wandering Albatross, Royal Albatross, Shy and White-capped Albatross, Light-mantled Sooty Albatross, Grey-headed Albatross and Black-browed Albatross, White-chinned Petrel, Mottled Petrel, White-headed Petrel, Cape Petrel, diving-petrel, Grey-backed and Black-bellied Storm-petrels. This is potentially some of the best pelagic 'birding' on the expedition.

Days 6 to 7: Macquarie Island

Australia's prized Subantarctic possession, it supports one of the highest concentrations of wildlife in the Southern Ocean. Millions of penguins of four different species - King, Rockhopper, Gentoo and the endemic Royal - breed here. We plan to spend our time divided between the two approved landing sites, Sandy Bay and Buckles Bay as well as a Zodiac cruise at Lusitania Bay if weather conditions permit. At Sandy Bay a Royal Penguin rookery teems with feisty little birds trotting back and forth, golden head plumes bobbing as they march to and from the shore. All three million of the world's Royal Penguins breed on Macquarie Island. There is also a substantial King Penguin Colony. Some of the best observations will be had by quietly sitting and letting the birds come to you. They are both unafraid and inquisitive - the combination is

unique. At Buckles Bay we plan to have a guided tour of the Australian Antarctic Division Base which was established in the late 1940s and has been manned continuously since then. Large groups of Southern Elephant Seals slumber on the beaches and in the tussock at both of our landing sites. These giant, blubbery creatures will barely acknowledge our presence, lying in groups of intertwined bodies, undergoing their annual moult. Younger bulls spar in the shallow water, preparing for their mature years when they will look after their own harems. The King Penguin rookery at Lusitania Bay is noisy and spectacular. A welcoming committee will likely porpoise around our Zodiacs as a quarter of a million King Penguins stand at attention on shore. In the centre of the rookery, rusting digesters are grim reminders of a time when scores of penguins were slaughtered for their oil. Now their offspring have reclaimed this territory. The Tasmanian National Parks and Wildlife Service, who administer the island, embarked on a very ambitious 7-year eradication programme resulting in the island earning pest-free status in 2014. Both the birds and plants have responded and it is amazing to witness the regeneration and the increase in the number of birds. It is an amazing island, in addition to the penguins and elephant seals, there are three species of fur seals to be found there and four species of albatross, Wandering, Black-browed, Grey-headed and Light-mantled Sooty.

Days 8 to 10: At Sea

Soaring albatross and petrels circle the vessel as we steam ever southward through the Southern Ocean. Lectures now concentrate on Antarctica and the Ross Sea region. We will pay attention to water temperatures so that we know when we cross the Antarctic Convergence into the cold but extremely productive Antarctic waters. Drifting icebergs carry vivid colours and come in extraordinary shapes. Each is a unique, natural sculpture. The captain will manoeuvre the ship in close for your first ice photograph and we will celebrate as we pass the Antarctic Circle and into Antarctica's realm of 24-hour daylight! Relax in the ship's bar and catch up with some reading in the library. If you have brought your laptop with you there will be time to download and edit photos while they are fresh in your mind.

Days 11 to 22: Antarctica's Ross Sea Region

During our time in the Ross Sea region, we will visit the highlights of Antarctica's most historic region. Due to the unpredictable nature of ice and weather conditions, a day-by-day itinerary is not possible. The Captain and Expedition Leader will assess daily conditions and take advantage of every opportunity to make landings or send you out in the Zodiacs. Our programme

Wild Earth Travel

Small Ships, Big Adventures

wildearth-travel.com

info@wildearth-travel.com

emphasises wildlife viewing, key scientific bases and historic sites, as well as the spectacular scenery of the coastal terrain, the glaciers and icebergs of the Ross Sea. Whilst specific landings cannot be guaranteed, we hope to visit the following: Cape Adare Cape Adare's bold headland and the Downshire Cliffs greet us as we approach Cape Adare - ice conditions permitting - at the tip of the Ross Sea, the site of the largest Adelie Penguin rookery in Antarctica. Blanketing the large, flat spit which forms the cape is the huge rookery which now, at the height of summer, numbers over one million birds - an absolutely staggering sight. You will never forget your first experiences in a ceaselessly active and noisy 'penguin city', where the dapper inhabitants show no fear of their strange visitors. Our naturalists will point out various aspects of their lifestyle and, by sitting down quietly, one may observe the often comical behaviour of the penguins, courtship displays, feeding ever-hungry chicks, territorial disputes and the pilfering of nest material. Surrounded by a sea of penguins we will find Borchgrevink's Hut, the oldest in Antarctica, an overwintering shelter for the first expedition to the continent in 1899. It is a fascinating relic of the 'Heroic Age' of Antarctic exploration and we are able to inspect the interior, which still contains artefacts of the early explorers. One thousand feet up in the hills behind Cape Adare is the oldest grave in Antarctica, that of 22-year-old Nicolai Hansen, a member of Borchgrevink's expedition. Cape Hallett The enormous Admiralty Range heralds our arrival at Cape Hallett, near the head of the Ross Sea. The scenery here is wild and spectacular; mountains rear up towering out of the sea to over 4,000-metres high and giant glaciers course down from the interior to the water's edge. We land next to the site of the abandoned American/New Zealand base, home to large numbers of Adelie Penguins and Weddell Seals. Franklin Island This rugged island, deep in the Ross Sea, is home to a large Adelie Penguin colony and other nesting seabirds. We will attempt a Zodiac landing near the rookery as well as exploring the coastline. If a landing is achieved and weather conditions are suitable there will be an opportunity to explore this remarkable island. Possession Islands These small, rugged and rarely visited islands lie off the shore of Cape Hallett. An Adelie Penguin rookery, numbering tens of thousands of birds, blankets Foyen Island. Observe their busy and sometimes humorous activities, with the Admiralty Mountains forming a superb backdrop across the water. Ross Ice Shelf The largest ice shelf in Antarctica, the Ross Ice Shelf is also the world's largest body of floating ice. A natural ice barrier, at times it creates hazardous weather conditions, with sheets of snow blown at gale force by the katabatic winds coming off the polar ice cap. Just 1,287 kilometres from the South Pole, this daunting spectacle prevented many early Antarctic explorers from venturing further south. From the Ross Ice Shelf we cruise eastward along the shelf front, with its spectacular 30-metre high ice cliffs, which sometimes calve tabular icebergs. Ross Island - Mount Erebus/ Cape Bird/ Shackleton's Hut/ Scott's Hut At the base of the Ross Sea we arrive at Ross Island, dominated by the 3,794-metre high volcano, Mt Erebus. The New Zealand Antarctica programme maintains a field station at Cape Bird,

where scientists study many aspects of the region's natural history, including the large Adelie Penguin colony. At Cape Royds we visit Sir Ernest Shackleton's hut, built during the Nimrod polar expedition of 1907-1909. Lectures explain many facets of Shackleton's amazing expeditions. He was possibly one of the greatest, and certainly one of the most heroic of the Antarctic explorers. Though the legendary explorers are long gone, the area around the hut is far from deserted, having been reclaimed by the original inhabitants of the area - thousands of Adelie Penguins in the world's southernmost penguin rookery. Also found on Ross Island is Cape Evans, the historic site of Captain Scott's second hut, erected in 1911 and beautifully preserved by the Antarctic Heritage Trust. It stands as testimony to the rigours faced by pioneering explorers. Inside the hut we will witness the living conditions almost exactly as they were when Scott, Wilson and Ponting occupied these quarters. Behind the hut, Mt Erebus looms above with its plume of white smoke spiralling up from the still-active inferno in its bowels. McMurdo and Scott Base (including Scott's Discovery Hut) These are always on our wish list but ice, weather and operational requirements for the National Programs icebreaker activities sometimes prevent us from visiting, especially on the January expedition. Our February expedition is generally more successful but not guaranteed. Terra Nova Bay Stazione Mario Zucchelli, an Italian summer research station, is an interesting shipping container construction. The friendly scientists and support staff here are always most hospitable and enjoy showing us around their lonely but beautiful home. The Italians conduct many streams of scientific research and also claim to have the best 'espresso' in Antarctica! Nearby is the German base, Gondwana Station, which is used occasionally and the South Korean station, Jang Bogo and on Inexpressible Island, China is building its fifth Antarctic base.

Days 23 to 25: At Sea

En route to Campbell Island, take part in a series of lectures designed to prepare you for our visit tomorrow. Pelagic species abound here as they did en route to Macquarie Island earlier in our voyage. Above all, take the time to rest and enjoy shipboard life after the excitement of the Antarctic.

Day 26: Campbell Island - Perseverance Harbour

New Zealand's southernmost Subantarctic territory, the Campbell Island group lies approximately 660-kilometres south of Bluff. We visit Campbell Island, the main island in the group, and spend the day exploring the island on foot from Perseverance Harbour, a long inlet cutting into the undulating landscape. Campbell Island is a truly magnificent place of rugged scenery, unique flora

Wild Earth Travel

Small Ships, Big Adventures

0800 945 3327 (within New Zealand) | +64 (0) 3 365 1355 | **1800 107 715** (within Australia)

info@wildearth-travel.com | **wildearth-travel.com**



Wild Earth Travel

Small Ships, Big Adventures

wildearth-travel.com

info@wildearth-travel.com

and abundant wildlife. Perseverance Harbour where we drop anchor is an occasional refuge for Southern Right Whales who come here to calve. Here we will find a now abandoned New Zealand meteorological station as well as Campbell Island Shags, penguins, fur seals and rare Hooker's Sea Lions. The highlight of our visit is a walk to the hilltop breeding sites of Southern Royal Albatross, over six thousand pairs of which breed on Campbell Island. These magnificent birds, close relations to, and the same size as, the Wandering Albatross, have the largest wingspan in the world and are very approachable, making superb photographic subjects.

Day 27: At Sea

At sea en route to the Port of Bluff, take the opportunity to relax and reflect on an amazing experience. This is a good opportunity to download and edit any remaining photos while they are fresh in your mind and you have the experience of our expedition team on board for questions. We will recap the highlights of our expedition and enjoy a farewell dinner tonight as we sail to our final port.

Day 28: Invercargill/ Queenstown

Early this morning we will arrive in the Port of Bluff. After a final breakfast and completing Custom formalities we bid farewell to our fellow voyagers and take a complimentary coach transfer to either Invercargill or Queenstown Airports. In case of unexpected delays due to weather and/or port operations we ask you not to book any onward travel until after midday from Invercargill and after 3pm from Queenstown.

Please Note:

During our voyage, circumstances may make it necessary or desirable to deviate from the proposed itinerary. This can include poor weather and opportunities for making unplanned excursions. Your Expedition Leader will keep you fully informed. Landings at the Subantarctic Islands of New Zealand are by permit only as administered by the Government of New Zealand. No landings are permitted at The Snares.

Wild Earth Travel
Small Ships, Big Adventures

0800 945 3327 (within New Zealand) | +64 (0) 3 365 1355 | **1800 107 715** (within Australia)

info@wildearth-travel.com | wildearth-travel.com



Wild Earth Travel

Small Ships, Big Adventures

wildearth-travel.com

info@wildearth-travel.com

YOUR SHIP: HERITAGE ADVENTURER

YOUR SHIP:	Heritage Adventurer
VESSEL TYPE:	Expedition Ship
LENGTH:	124 metres
PASSENGER CAPACITY:	140
BUILT/REFURBISHED:	1991

Heritage Adventurer is a true pioneering expedition vessel of exceptional pedigree. Often referred to as the 'Grande Dame of Polar Exploration' due to her celebrated history and refined design, she was purpose-built for adventure in 1991 at Finland's Rauma shipyard and specifically designed for Polar exploration. Setting a peerless standard in authentic expedition travel, Heritage Adventurer (formerly known as MS Hanseatic) combines the highest passenger ship ice-class rating (1A Super) with an impressive history of Polar exploration. Having held records for the most northern and southern Arctic and Antarctic navigations, and for traversing both the Northwest and Northeast Passages, makes Heritage Adventurer perfect for pioneering New Zealand-based Heritage Expeditions signature experiential expedition travel. Originally designed to accommodate 184 guests, Heritage Adventurer now welcomes just 140 expeditioners ensuring spacious, stylish and comfortable voyages, while a fleet of 14 Zodiacs ensures all guests are able to maximise their expedition adventure. Heritage Adventurer proudly continues our traditions of exceptional, personalised expedition experiences as Heritage Expeditions flagship.

Observation Lounge - One of the most celebrated and best-known features of Heritage Adventurer is the awe-inducing Observation Lounge, Library and Bar. Located on Deck 7 and perched directly above the Bridge, enjoy sweeping 270-degree views through floor to ceiling windows, perfect for wildlife spotting and quick access to the outer deck. Bring your binoculars to spot wildlife, observe the ever-changing landscape, write in your journal or relax with a book.

Observation Deck - Enjoy 360-degree views from the highest point on the ship. The Observation Deck sits above the Observation Lounge and provides exceptional outside viewing options. Stretching the full width of the vessel, this is the perfect spot to take in the surrounding land and seascapes. Perfect on a sunny day, recline in the comfortable sun loungers protected from the wind and elements and watch your voyage unfold.

The Bridge - No expedition is complete without visiting Heritage Adventurer's busy nerve centre. Located on Deck 6, Heritage Expeditions' Open Bridge Policy means you are welcome to observe the Captain and crew at work while enjoying some of the ship's best views. It's a fascinating place to learn about navigation and vessel operations, however please note the Bridge will be closed when departing or arriving at port.

Dining Room - Indulge in fine international cuisine from our talented chefs in the lavish surrounds of our Dining Room on Deck 4. Sensational 270-degree views provide a stunning backdrop to meals here along with an international wine list featuring many outstanding regional wines. With relaxed seating arrangements, all guests can enjoy dining in a single sitting from



Wild Earth Travel
Small Ships, Big Adventures

0800 945 3327 (within New Zealand) | +64 (0) 3 365 1355 | **1800 107 715** (within Australia)

info@wildearth-travel.com | **wildearth-travel.com**

Wild Earth Travel

Small Ships, Big Adventures

wildearth-travel.com

info@wildearth-travel.com

hearty breakfasts setting you up for the day's adventure to sumptuous lunches and multi-course evening dining.

Bistro - Simple fast and delicious meals and snacks are on offer in our relaxed Bistro on Deck 6. Perfect for early risers to enjoy tea, coffee and light breakfast options the Bistro provides great views and opens directly onto a covered and heated teak-deck outdoor dining area.

The Bar and Lounge - The social hub of Heritage Adventurer, the Bar and Lounge on Deck 5 features seating for all guests. Enjoy a beverage at the bar, sink into an armchair, relax on one of the many spacious loungers and watch the world go by through the panoramic windows or make new friends at the communal seating. This multi-tasking space also doubles as the location of daily briefings and evening recaps with the expedition team.

The Gym - Featuring spectacular ocean views, the well-equipped gym is adjacent to the pool, hot tub and sauna in Deck 7's wellbeing zone. Maintain your routine with an elliptical cross trainer, treadmill, rowing machine, stationary bikes, TRX as well as free weights, yoga mats and fitness balls. Towels are provided with change room and shower amenities nearby.

Sauna and Steam Room - True to her Nordic origins, Heritage Adventurer features a dry-heat Finnish sauna and European steam room on Deck 7. Perfect for warming up post Polar plunge or unwinding after a day's adventures, the sauna and steam room include change room facilities, showers and towels.

Swimming Pool and Hot Tub - Surrounded by relaxed teak seating including sun loungers, the open-air saltwater pool can be heated or chilled. Encased in glass the hot tub ensures all-weather use, perfect for those who like to relax with a view following a day of exploring.

Lectures and Presentations - Enjoy informative and entertaining lectures on history, biology, wildlife, and ecology in the comfort

of the Presentation Theatre. With state-of-the-art audio-visual equipment, our world-renowned expedition team will bring your adventure to life through interactive presentations and discussions.



discussions.

Wild Earth Travel

Small Ships, Big Adventures

0800 945 3327 (within New Zealand) | +64 (0) 3 365 1355 | **1800 107 715** (within Australia)

info@wildearth-travel.com | **wildearth-travel.com**

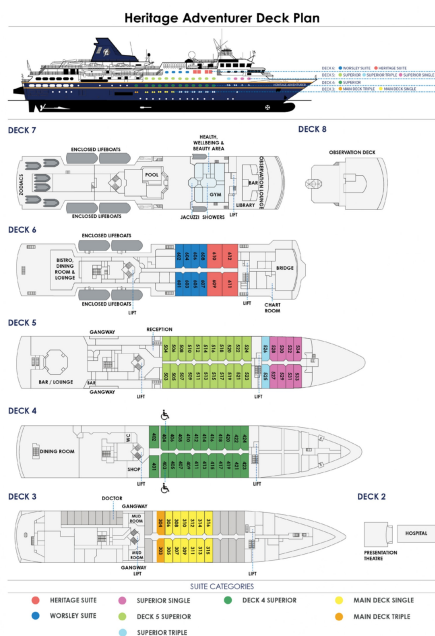
Wild Earth Travel

Small Ships, Big Adventures

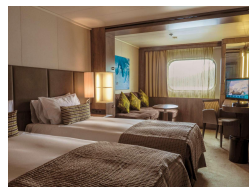
wildearth-travel.com

info@wildearth-travel.com

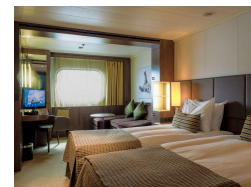
INSIDE YOUR SHIP



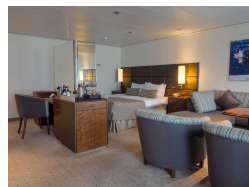
Deck 4 Superior



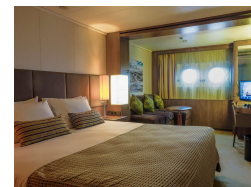
Deck 5 Superior



Heritage Suite



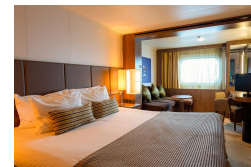
Main Deck Single



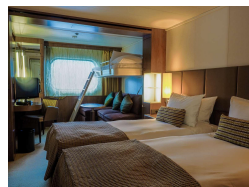
Main Deck Triple



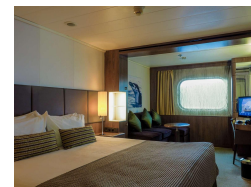
Superior Single



Superior Triple



Worsley Suite



Wild Earth Travel

Small Ships, Big Adventures

wildearth-travel.com

info@wildearth-travel.com

PRICING

10-Jan-2026 to 06-Feb-2026

Main Deck Triple	45275 AUD pp
Superior Triple	46950 AUD pp
Deck 4 Superior	49995 AUD pp
Deck 5 Superior	51570 AUD pp
Worsley Suite	53067 AUD pp
Main Deck Single	61445 AUD pp
Superior Single	63250 AUD pp
Heritage Suite	72320 AUD pp

05-Feb-2026 to 04-Mar-2026

Main Deck Triple	45275 AUD pp
Superior Triple	46950 AUD pp
Deck 4 Superior	49995 AUD pp
Deck 5 Superior	51570 AUD pp
Worsley Suite	53067 AUD pp
Main Deck Single	61445 AUD pp
Superior Single	63250 AUD pp
Heritage Suite	72320 AUD pp

06-Jan-2027 to 02-Feb-2027

Main Deck Triple	49365 AUD pp
Superior Triple	51175 AUD pp
Deck 4 Superior	54500 AUD pp
Deck 5 Superior	56230 AUD pp
Worsley Suite	57879 AUD pp
Main Deck Single	67000 AUD pp
Superior Single	68950 AUD pp
Heritage Suite	79550 AUD pp

01-Feb-2027 to 28-Feb-2027

Main Deck Triple	49365 AUD pp
Superior Triple	51175 AUD pp
Deck 4 Superior	54500 AUD pp
Deck 5 Superior	56230 AUD pp
Worsley Suite	57879 AUD pp
Main Deck Single	67000 AUD pp
Superior Single	68950 AUD pp
Heritage Suite	79550 AUD pp



Wild Earth Travel

Small Ships, Big Adventures



wildearth-travel.com

info@wildearth-travel.com

SPECIAL OFFERS

Online prices reflect current special offers and may vary. This promotion is time - limited and subject to availability. Terms and conditions apply. For more information, please contact us.



Wild Earth Travel

Small Ships, Big Adventures

0800 945 3327 (within New Zealand) | +64 (0) 3 365 1355 | **1800 107 715** (within Australia)

info@wildearth-travel.com | **wildearth-travel.com**