

# Wild Earth Travel

*Small Ships, Big Adventures*

[wildearth-travel.com](http://wildearth-travel.com)

[info@wildearth-travel.com](mailto:info@wildearth-travel.com)

## VOLCANIC LANDSCAPES FROM CAPE VERDE TO CANARY ISLANDS LUXURY CRUISE

Embark on an extraordinary journey to the volcanic archipelagos of Cape Verde and the Canaries, a blend of untamed nature and exceptional cultural heritage. Mythical volcanoes, lunar landscapes, lush valleys, secret coves... These volcanic lands are home to contrasting, breathtaking panoramas and unspoilt national parks that invite exploration. From captivating Praia to vibrant Lanzarote, each port of call will immerse you in the unique atmosphere of the island's towns, where colourful markets mingle with colonial architectural treasures, revealing a fascinating history of European and African influences.



### ITINERARY

#### Day 1 DAKAR \*

On the tip of the African continent, the buzzing capital of Senegal stretches along the narrow peninsula of Cape Verde. You may be overwhelmed by its sheer size, but Dakar will win you over with its richly diverse districts, appealing cultural scene and rich natural surroundings. In the historic centre, you'll enjoy the pell-mell of colours and tasty delights in Kermel market. Far from the effervescence of the city, Goree Island, a UNESCO World Heritage Site, is known as a place of remembrance, having once been a slave trade outpost. On the other side of the plateau, the wild Madeleine islands are protected by a national park.

#### Day 2 AT SEA \*

Wild Earth Travel

*Small Ships, Big Adventures*

0800 945 3327 (within New Zealand) | +64 (0) 3 365 1355 | 1800 107 715 (within Australia)

[info@wildearth-travel.com](mailto:info@wildearth-travel.com) | [wildearth-travel.com](http://wildearth-travel.com)



# Wild Earth Travel

*Small Ships, Big Adventures*

**wildearth-travel.com**

**info@wildearth-travel.com**

During your journey at sea, make the most of the many services and activities on board. Treat yourself to a moment of relaxation in the spa or stay in shape in the fitness centre. Depending on the season, let yourself be tempted by the swimming pool or a spot of sunbathing. This journey without a port of call will also be an opportunity to enjoy the conferences or shows proposed on board, depending on the activities offered, or to do some shopping in the boutique or to meet the PONANT photographers in their dedicated space. As for lovers of the open sea, they will be able to visit the ship's upper deck to admire the spectacle of the waves and perhaps be lucky enough to observe marine species. A truly enchanted interlude, combining comfort, rest and entertainment.

## Day 3 PRAIA \*

The capital of Cape Verde, Praia, is located on the southern tip of Santiago island. You can dally in the districts planted with Tamarind and Albizia trees. Above the harbour, the statue of Diogo Gomes pays homage to the man who discovered Cape Verde in 1460. A few streets away, in the old centre, the Ethnographic Museum presents the diversity of the archipelago's cultural origins. Its historical building with transom windows is one of the city's more unusual curiosities.

## Days 4 MINDELO \*

Set on the shores of the Porto Grande bay on the north-west coast of Sao Vicente, Mindelo is considered to be Cape Verde's cultural capital. Here in singer Cesaria Evora's homeland, you can listen to real morna in the bars of the old town, where you can also sip the local grog, a Cape Verdian sugarcane spirit. A few streets from the elegant floating resort of Pont d'agua you'll see the pastel-coloured houses and colonial buildings of the historical district. Other landmarks are the facades of the old Governor's Palace and the busy municipal market.

## Days 5 - 6 AT SEA \*

During your journey at sea, make the most of the many services and activities on board. Treat yourself to a moment of relaxation in the spa or stay in shape in the fitness centre. Depending on the season, let yourself be tempted by the

swimming pool or a spot of sunbathing. This journey without a port of call will also be an opportunity to enjoy the conferences or shows proposed on board, depending on the activities offered, or to do some shopping in the boutique or to meet the PONANT photographers in their dedicated space. As for lovers of the open sea, they will be able to visit the ship's upper deck to admire the spectacle of the waves and perhaps be lucky enough to observe marine species. A truly enchanted interlude, combining comfort, rest and entertainment.

## Day 7 SANTA CRUZ DE LA PALMA, CANARY ISLANDS \*

The capital of the island of Palma, Santa Cruz de la Palma is the pearl of the Canaries. Founded in 1493 by the conquistador Alonso Fernandez de Lugo, the city has preserved a large and atypical architectural heritage from its colonial past, with its traditional Canarian houses adorned with brightly coloured wooden balconies, its cobbled streets, its sumptuous palaces and its numerous religious buildings. The Santa Catalina Castle is the symbol of the city. This 16th century military fortification helped defend the city from repeated attacks by French privateers.

## Day 8 SANTA CRUZ DE TENERIFE, CANARY ISLANDS \*

The capital city of Tenerife is located on the north-east coast of the island. Close to the port is the monumental Plaza de España, bedecked with a fountain and plant sculptures. Around the plaza, you can admire the white marble Triunfo de la Candelaria obelisk, the historic casino of Santa Cruz and the majestic Guimera theatre. Not far from here, the picturesque Iglesia de la Concepcion church features the characteristic traits of Canaries architecture.

## Day 9 LA ESTACA, CANARY ISLANDS \*

With its particularly pleasant climate, El Hierro, the youngest of the Canary Islands, invites you to discover enchanting panoramas in an atmosphere of unrivalled calm and serenity. You will be captivated by the untouched natural environment, featuring a majestic volcano, lush forests, sheer cliffs and natural pools. Besides the treasures on land, you will also have the chance to discover its underwater environment. Teeming with life, it is a paradise for diving enthusiasts, since the island is home to the Punta de La Restinga Marine Reserve, its thousands of colourful fish and stunning underwater volcanic landscapes.

Wild Earth Travel

*Small Ships, Big Adventures*

**0800 945 3327** (within New Zealand) | +64 (0) 3 365 1355 | **1800 107 715** (within Australia)

info@wildearth-travel.com | wildearth-travel.com





# Wild Earth Travel

*Small Ships, Big Adventures*

**wildearth-travel.com**

**info@wildearth-travel.com**

## Day 10 ARRECIFE DE LANZAROTE, CANARY ISLANDS \*

Established on a coast sprinkled with cliffs, Arrecife has a pleasant beach and a lagoon full of charm, Charca of San Gines, where the fishermen anchor their boats. The city also proposes places fed by history and culture, such as the castle San Gabriel, former fort of defense of the city.

## Day 11 LAS PALMAS DE GRAN CANARIA, CANARY ISLANDS \*

A stopover of sunny climes, Las Palmas is located on the north-east coast of Gran Canaria. A few streets away from Puerto de la Luz port, you'll discover the vast Las Canteras beach, bordered with the town's characteristic palms. You'll find these palms are all over Las Palmas, in the streets and squares, especially on the plaza de Santa Ana in the heart of the historical district. It feels like you've travelled back in time here, as you stand looking at the tall houses beside the Santa Ana cathedral. Very close by, you can visit the Casa de Colon, a museum dedicated to the famous explorer. The museum is housed in the palace belonging to the island's former governor. Chances are, you'll be drawn to the covered Vegueta market to partake in some daily life along with the locals and taste some unfamiliar dishes.

Please note: \*

Itineraries are subject to change.

**Wild Earth Travel**

*Small Ships, Big Adventures*

**0800 945 3327** (within New Zealand) | +64 (0) 3 365 1355 | **1800 107 715** (within Australia)

info@wildearth-travel.com | **wildearth-travel.com**



# Wild Earth Travel

*Small Ships, Big Adventures*

**wildearth-travel.com**

**info@wildearth-travel.com**

## YOUR SHIP: LE BOUGAINVILLE

**YOUR SHIP:** Le Bougainville

**VESSEL TYPE:** Luxury

**LENGTH:**

**PASSENGER CAPACITY:** 92 cabins

**BUILT/REFURBISHED:** 2017/2018

Featuring innovative and environmentally-friendly equipment, elegantly designed cabins, spacious suites with large windows, and lounge areas that open onto the outside, this new limited-capacity yacht boasting just 92 cabins and suites will offer you a truly unique cruising experience.

As the first ship in a new series that remains true to the Ponant spirit, Le Bougainville will embody the unique atmosphere that is the cruise line's hallmark: a subtle blend of refinement, intimacy and comfort.

Aboard this ship that flies the French flag, you will experience the incomparable pleasure of an intimate cruise, with the possibility of exploring an ever-increasing range of destinations in an ethnic-chic ambiance with luxury service.

Experience a luxurious setting where the accent is on authenticity and passion for travel.

### RESTAURANTS

As it is an essential part of French culture, gastronomy will naturally have pride of place aboard this new ship. Through its two restaurants, Le Bougainville will invite you on a journey to elegance and epicureanism.

In a relaxed atmosphere, a first dining area located on Deck 3

and able to seat 70 will serve grilled meats daily, along with a variety of salads and desserts.

To the back of Deck 4, you will find a 260 m<sup>2</sup> panoramic restaurant which can accommodate all of our passengers in a single sitting. Designed differently to that on our other ships, this dining area, which opens onto the outside, will have a buffet of salads, desserts and cheeses at your disposal. Our discreet and attentive crew will provide table service for hot meals.

### PUBLIC AREAS

Like Le Boreal and its sisterships, Le Bougainville has many common areas that are designed and equipped to meet all of your needs while preserving the intimacy of each passenger.

A 140 m<sup>2</sup> reception area includes:

A reception/concierge desk, An excursions desk, The ship's administrative services, The sales office, manned by our Guest Relations Officer, Our 50 m<sup>2</sup> boutique which sells clothing, jewellery, beauty products, postcards and various accessories, Toilets accessible to passengers with reduced mobility.

A new hydraulic platform with adjustable height provides: Easier boarding than on any other cruise ship, Easier Zodiac embarkation and disembarkation for expeditions, Easier access to the sea for swimming and practising various water sports such as kayaking or paddle-boarding.

A pool deck offering: A pool with a panoramic view, equipped with a counter-current swimming system, A pleasant solarium, An outdoor bar and lounge with armchairs and sofas.

A 200 m<sup>2</sup> main lounge which can accommodate all of our passengers to share convivial moments and to host activities organised during the day or evening.

Wild Earth Travel

*Small Ships, Big Adventures*

**0800 945 3327** (within New Zealand) | +64 (0) 3 365 1355 | **1800 107 715** (within Australia)

info@wildearth-travel.com | wildearth-travel.com



# Wild Earth Travel

*Small Ships, Big Adventures*

**wildearth-travel.com**

**info@wildearth-travel.com**

Lastly, a theatre that seats 188, equipped with: The latest sound and lighting technology, A LED wall as the stage backdrop, for the projection of high-resolution images and videos.



and videos.

Wild Earth Travel

*Small Ships, Big Adventures*

**0800 945 3327** (within New Zealand) | +64 (0) 3 365 1355 | **1800 107 715** (within Australia)

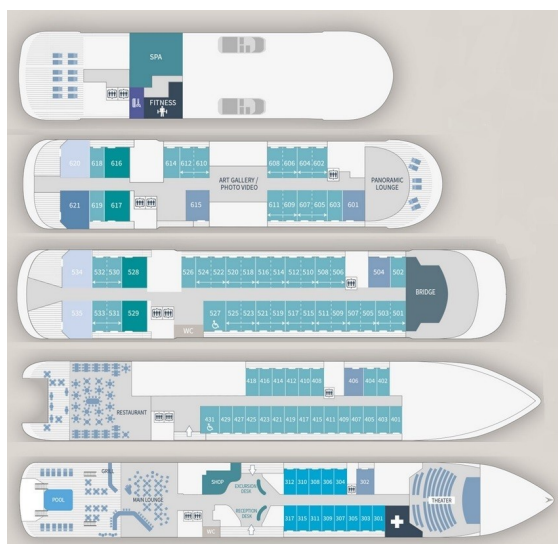
info@wildearth-travel.com | **wildearth-travel.com**



[wildearth-travel.com](http://wildearth-travel.com)

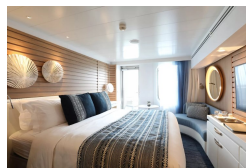
[info@wildearth-travel.com](mailto:info@wildearth-travel.com)

## INSIDE YOUR SHIP

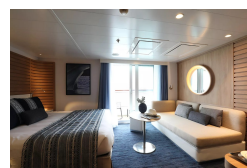


- Owner's Suite Deck 6
- Privilege Suites Deck 5-6
- Grand Deluxe Suites Deck 5-6
- Prestige Suites Deck 5-6
- Deluxe Suites Deck 5-6
- Prestige Cabins Deck 4-5-6
- Deluxe Cabins Deck 3

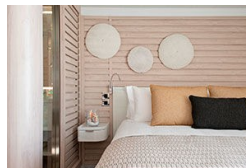
Deluxe Stateroom



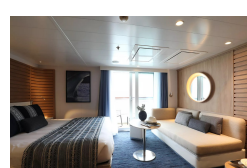
Deluxe Suite



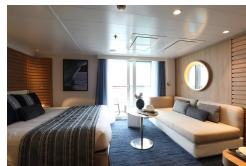
Deluxe Suite Deck 3



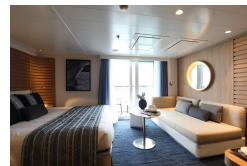
Deluxe Suite Deck 4



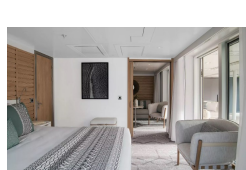
Deluxe Suite Deck 5



Deluxe Suite Deck 6



Grand Deluxe Suite



Grand Deluxe Suite Deck 5





# Wild Earth Travel

*Small Ships, Big Adventures*

**wildearth-travel.com**

**info@wildearth-travel.com**

## PRICING

### 01-Feb-2026 to 11-Feb-2026

Deluxe Stateroom	8250 AUD pp
Prestige Stateroom Deck 4	8690 AUD pp
Prestige Stateroom Deck 5	8940 AUD pp
Prestige Stateroom Deck 6	9290 AUD pp
Deluxe Suite Deck 5	12460 AUD pp
Deluxe Suite	12460 AUD pp
Deluxe Suite Deck 4	12460 AUD pp
Deluxe Suite Deck 6	12460 AUD pp
Prestige Suite Deck 5	13410 AUD pp
Prestige Suite Deck 6	13840 AUD pp
Privilege Suite	14180 AUD pp
Privilege Suite Deck 6	14180 AUD pp
Grand Deluxe Suite	14610 AUD pp
Grand Deluxe Suite Deck 6	14610 AUD pp
Owner's Suite	17890 AUD pp

Deluxe Stateroom	7310 AUD pp
Prestige Deck 4	7690 AUD pp
Prestige Deck 5	7920 AUD pp
Prestige Deck 6	8220 AUD pp
Deluxe Suite Deck 4	11000 AUD pp
Deluxe Suite Deck 3	11000 AUD pp
Deluxe Suite Deck 6	11000 AUD pp
Deluxe Suite Deck 5	11000 AUD pp
Prestige Deck 5 Suite	11820 AUD pp
Prestige Deck 6 Suite	12200 AUD pp
Privilege Suite Deck 5	12500 AUD pp
Privilege Suite Deck 6	12500 AUD pp
Grand Deluxe Suite Deck 5	12870 AUD pp
Grand Deluxe Suite Deck 6	12870 AUD pp

### 10-Apr-2026 to 19-Apr-2026

# Wild Earth Travel

*Small Ships, Big Adventures*

**wildearth-travel.com**

**info@wildearth-travel.com**

## PRICING

### 06-Jan-2027 to 16-Jan-2027

Deluxe Stateroom	7460 AUD pp
Prestige Deck 4	7830 AUD pp
Prestige Deck 5	8070 AUD pp
Prestige Deck 6	8370 AUD pp
Deluxe Suite Deck 6	11220 AUD pp
Deluxe Suite Deck 3	11220 AUD pp
Deluxe Suite Deck 4	11220 AUD pp
Deluxe Suite Deck 5	11220 AUD pp
Prestige Deck 5 Suite	12060 AUD pp
Prestige Deck 6 Suite	12440 AUD pp
Privilege Suite Deck 6	12740 AUD pp
Privilege Suite Deck 5	12740 AUD pp
Grand Deluxe Suite Deck 6	13130 AUD pp
Grand Deluxe Suite Deck 5	13130 AUD pp

Deluxe Stateroom	7460 AUD pp
Prestige Deck 4	7830 AUD pp
Prestige Deck 5	8070 AUD pp
Prestige Deck 6	8370 AUD pp
Deluxe Suite Deck 3	11220 AUD pp
Deluxe Suite Deck 5	11220 AUD pp
Deluxe Suite Deck 6	11220 AUD pp
Deluxe Suite Deck 4	11220 AUD pp
Prestige Deck 5 Suite	12060 AUD pp
Prestige Deck 6 Suite	12440 AUD pp
Privilege Suite Deck 5	12740 AUD pp
Privilege Suite Deck 6	12740 AUD pp
Grand Deluxe Suite Deck 6	13130 AUD pp
Grand Deluxe Suite Deck 5	13130 AUD pp

### 15-Mar-2027 to 25-Mar-2027

Wild Earth Travel

*Small Ships, Big Adventures*

**0800 945 3327** (within New Zealand) | +64 (0) 3 365 1355 | **1800 107 715** (within Australia)

info@wildearth-travel.com | wildearth-travel.com





# Wild Earth Travel

*Small Ships, Big Adventures*

**wildearth-travel.com**

**info@wildearth-travel.com**

## SPECIAL OFFERS

Online prices reflect the current brochure fare savings of up to 30%. Prices may change based on demand. Terms and conditions apply. This special offer is subject to availability. Please contact us for more details.

Wild Earth Travel

*Small Ships, Big Adventures*

**0800 945 3327** (within New Zealand) | +64 (0) 3 365 1355 | **1800 107 715** (within Australia)

info@wildearth-travel.com | **wildearth-travel.com**