

Wild Earth Travel

Small Ships, Big Adventures

wildearth-travel.com

info@wildearth-travel.com

UNSEEN STEWART ISLAND: PRISTINE WILDERNESS AND WILDLIFE ADVENTURE

Discover the time-forgotten rawness of wildlife-rich Stewart Island/Rakiura and Ulva Island/Te Wharawhara with Heritage Expeditions, New Zealand's pioneering small ship expedition cruise company, on this exclusive 8-day voyage aboard our luxurious 18-guest expedition yacht Heritage Explorer.

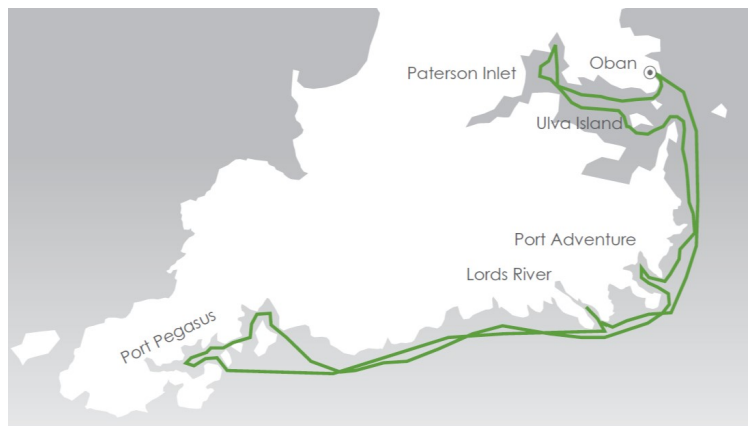
Described by botanist Leonard Cockayne in 1909 as being "an actual piece of the primeval world", his comment still rings true today. Just 30-kilometres from the Mainland and with more than 85% of the island dedicated National Park, New Zealand's third island combines stunning landscapes spanning towering granite cliffs to unspoiled wilderness (more than half the island is covered by podocarp and rimu, miro, kamahi and southern rata dominant forests), 700-kilometres of coastline, beaches, hidden bays and coves, with abundant wildlife, numerous conservation success stories, rich history, epic sunrises and sunsets and the rightly famous hospitality of the friendly locals.

And with its Maori name, Rakiura, translating to 'the land of the glowing skies', there's also the opportunity to experience the spectacular Aurora Australis which often puts on a mesmerising show as it famously paints the southern skies.

With only 25-kilometres of road, Stewart Island and its remote, hard to reach shores and historic spots are best explored by sea including nearby predator-free Ulva Island - your best chance of seeing New Zealand's national icon the Kiwi bird during the day along with Stewart Island Robin, Stewart Island Weka, South Island Kaka, Kereru (wood pigeon), Mohua (yellowhead),

Red-crowned Parakeet, Fantail, Bellbird and Tui.

Discover quirky town centre Oban in Halfmoon Bay where a drink with a view can be enjoyed at the iconic South Sea Hotel, historic Paterson Inlet, Port Pegasus and more as we experience Unseen Stewart and Ulva Islands on this unforgettable adventure.



adventure.

ITINERARY

Day 1: Invercargill/Oban

Make your way to the Invercargill Airport where you will meet your fellow travellers before catching your charter flight (times will be confirmed with your voyage documents) to Oban. The Captain and Expedition Leader will be waiting to welcome you aboard Heritage Explorer at Oban and show you to your cabin as you settle into life aboard your home away from home.

Wild Earth Travel

Small Ships, Big Adventures

0800 945 3327 (within New Zealand) | +64 (0) 3 365 1355 | **1800 107 715** (within Australia)

info@wildearth-travel.com | **wildearth-travel.com**



Wild Earth Travel

Small Ships, Big Adventures

wildearth-travel.com

info@wildearth-travel.com

Day 2: Paterson Inlet

Awake refreshed this morning after your first night on Heritage Explorer and enjoy breakfast among the wide open spaces and serenity of Stewart Island's primeval landscape. Today we plan to explore Paterson Inlet, its near 100-kilometre square expanse features bush-clad bays, beaches, inlets, and 20 islands while its waters frequently visited by Bottlenose Dolphins. During our time here there will be opportunities to visit the historic Norwegian whaling station in Prices Inlet and Kaipipi Bay, where from 1923 and 1933 the Ross Sea Whaling Company of Sandefjord, Norway ran a repair base where chaser boats were serviced in preparation for the Antarctic summer, walk one of the many forest trails and explore predator-free bird sanctuary Ulva Island with our knowledgeable guides and marvel at the variety of birdlife flourishing here.

Day 3: Port Adventure

Exploring southwards along the eastern coast of Stewart Island there are several well protected and important harbours for us to visit, with Port Adventure being the first of these we reach. Popular for fishing, hunting and diving this bay once housed a small Maori settlement who arrived from The Neck in 1843. Here opportunities could include visiting the Port Adventure Hunters Hut in the North Arm, Zodiac cruising the coastline and the spectacular Heron River, along with adventures ashore on foot.

Days 4 to 6: Port Pegasus

Sure to be one of the highlights of our voyage, we have three days to explore the remote, undisturbed beauty of Port Pegasus. Isolated at the southern end of the island, with access predominantly by sea, there is much to explore and experience among this undisturbed wilderness. Boasting an expansive harbour laced with waterways, arms and channels, several waterfalls and three main islands - Pearl Island (the largest) in the north, Anchorage Island in the centre, and Noble Island in the south, provides an unrivalled opportunity to immerse yourself in the scenic beauty of Stewart Island. We will spend our time exploring via Zodiac and kayak, venturing into hidden coves and landing on pristine white sand beaches where few have set foot before. There are also a number of excellent walking options including exploring the granite domes of Gog and Magog, or venturing onto the southern extension of the subalpine Tin Range, the eastern area of which would become the last refuge for K k po in the second half of the 20th Century. The marine life here abounds with

Hooker's/New Zealand Sea Lions and Yellow-eyed Penguins/Hoiho regularly seen. For those who enjoy fishing there will be ample opportunity to try your luck at catching a meal for the table.

Day 7: Lords River

Returning northwards along the shores of Stewart Island's east coast, Heritage Explorer ventures into the sheltered waters of Lords Rive. At 8-kilometres it is the longest navigable river on Stewart Island. Considered one of the most spectacular and unspoilt areas of New Zealand and the country's Amazon, a historic deed was signed in 1999 to protect the area's 3,515 hecatres of virgin native forest. Here we will take the opportunity to enjoy a Zodiac safari up this fascinating winding estuary with its tannin-stained water reminiscent of Fiordland as it snakes its way to the ocean from the interior of Stewart Island.

Day 8: Oban/Invercargill

This morning Heritage Explorer returns to Oban where, after a final breakfast and farewells, you will be transferred to the airport to catch your charter flight to Invercargill. In case of unexpected delays, we ask you not to book any onward travel from Invercargill until after midday.

Please Note:

During our voyage, circumstances may make it necessary or desirable to deviate from the proposed itinerary. This can include poor weather and opportunities for making unplanned excursions. Your Expedition Leader will keep you fully informed.

Wild Earth Travel

Small Ships, Big Adventures

wildearth-travel.com

info@wildearth-travel.com

YOUR SHIP: HERITAGE EXPLORER

| | |
|----------------------------|--------------------------|
| YOUR SHIP: | Heritage Explorer |
| VESSEL TYPE: | Expedition Yacht |
| LENGTH: | 30 metres |
| PASSENGER CAPACITY: | 18 |
| BUILT/REFURBISHED: | 2004 |

New Zealand-built expedition yacht _Heritage Explorer_ joins Heritage Expedition's small ship fleet creating new opportunities of discovery around the shores of New Zealand. Setting a new standard for discovery travel in New Zealand, Heritage Explorer combines the ultimate in comfort with unique itineraries and a personalised experience with a maximum of just 18 guests on board.

Heritage Explorer is a 30-metre, 4-deck New Zealand flagged vessel built in 2004 by the renowned wooden boat building family Carey's Boatyard in Picton. It features a contemporary wood-finished interior, 10 well-appointed cabins across three decks, dining room boasting spectacular 180-degree panoramas and theatre capabilities; lounge and bar featuring a flight of inclusive regional New Zealand wines, beers and spirits; and a well-stocked local library.

Outside, guests can enjoy plenty of covered space on the Bridge Deck, or ajourn to the Sun Deck perfect for wildlife spotting, sunrises and sunsets, or simply enjoying watch your voyage unfold. Kayaks and fishing equipment are available for use during the voyage, while two tenders allow for deeper exploration and the unforgettable wildlife encounters

synonymous with all Heritage Expeditions adventures.

As with as with our other vessels, _Heritage Explorer_ will have an open bridge policy and a full commercial kitchen helmed by a talented chef focused on highlighting local produce and any guest catches of the day, as well as an enthusiastic and passionate expedition team, and will be shipped by a New Zealand captain and crew.

The expedition yacht features state-of-the-art technology to provide a comfortable expedition with high performance dual Scania 653 horsepower engines, bow thrusters, fin stabilisers, full air-conditioning, sound attenuated twin generators and a hydraulic aft ramp, while a comprehensive navigation package ensures the ultimate Kiwi adventure awaits all guests.

Accommodation Details

Royal: Located on the Bridge Deck, our Master Suite features a spacious bedroom with a queen-sized bed, ample storage with wardrobe and drawers, mirror and washbasin, private en suite, personal climate control, TV, PABX satellite telephone, window and French doors opening out on to the covered Bridge Deck.

Salvin's: Located on the Lower Deck, Salvin's cabins have the option of either a double bed or two lower berths. Both feature ample storage with wardrobe and drawers, TV, PABX satellite telephone, private en suite and a picture porthole.

Wandering: Located on the Lower Deck, Wandering cabins feature one lower single berth, ample storage with wardrobe and drawers, TV, PABX satellite telephone, private en suite and a porthole.

Buller's: Located on the Lower Deck, the Buller's cabin features one bunk (one upper and one lower berth), ample storage with

Wild Earth Travel

Small Ships, Big Adventures

wildearth-travel.com

info@wildearth-travel.com

wardrobe and drawers, TV, PABX satellite telephone, private en suite and a porthole.



a porthole.

Wild Earth Travel
Small Ships, Big Adventures

0800 945 3327 (within New Zealand) | +64 (0) 3 365 1355 | **1800 107 715** (within Australia)

info@wildearth-travel.com | **wildearth-travel.com**

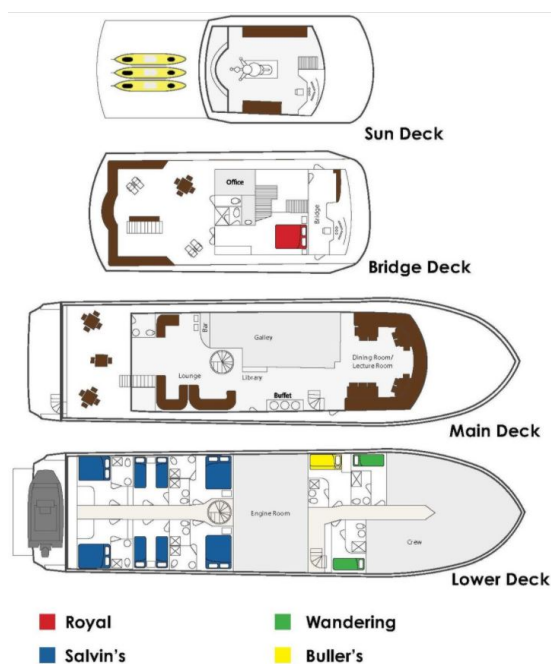
Wild Earth Travel

Small Ships, Big Adventures

wildearth-travel.com

info@wildearth-travel.com

INSIDE YOUR SHIP



Buller's



Royal



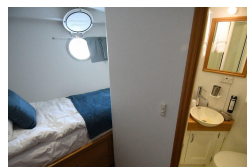
Salvin's Double



Salvin's Twin



Wandering



Wild Earth Travel

Small Ships, Big Adventures

wildearth-travel.com

info@wildearth-travel.com

PRICING

01-Oct-2025 to 08-Oct-2025

| | |
|-----------------|-------------|
| Buller's | 5899 AUD pp |
| Salvin's Twin | 6565 AUD pp |
| Salvin's Double | 6565 AUD pp |
| Wandering | 6907 AUD pp |
| Royal | 8091 AUD pp |

08-Oct-2025 to 15-Oct-2025

| | |
|-----------------|-------------|
| Buller's | 5899 AUD pp |
| Salvin's Twin | 6565 AUD pp |
| Salvin's Double | 6565 AUD pp |
| Wandering | 6907 AUD pp |
| Royal | 8091 AUD pp |

15-Oct-2025 to 22-Oct-2025

| | |
|-----------------|-------------|
| Buller's | 5899 AUD pp |
| Salvin's Twin | 6565 AUD pp |
| Salvin's Double | 6565 AUD pp |
| Wandering | 6907 AUD pp |
| Royal | 8091 AUD pp |

22-Oct-2025 to 29-Oct-2025

| | |
|-----------------|-------------|
| Buller's | 6555 AUD pp |
| Salvin's Twin | 7295 AUD pp |
| Salvin's Double | 7295 AUD pp |
| Wandering | 7675 AUD pp |
| Royal | 8990 AUD pp |

30-Dec-2025 to 06-Jan-2026

| | |
|-----------------|-------------|
| Buller's | 5508 AUD pp |
| Salvin's Double | 6128 AUD pp |
| Salvin's Twin | 6128 AUD pp |
| Wandering | 6448 AUD pp |
| Royal | 7552 AUD pp |

06-Jan-2026 to 13-Jan-2026

| | |
|-----------------|-------------|
| Buller's | 5508 AUD pp |
| Salvin's Double | 6128 AUD pp |
| Salvin's Twin | 6128 AUD pp |
| Wandering | 6448 AUD pp |
| Royal | 7552 AUD pp |

04-Oct-2026 to 11-Oct-2026

| | |
|-----------------|-------------|
| Buller's | 5508 AUD pp |
| Salvin's Double | 6128 AUD pp |
| Salvin's Twin | 6128 AUD pp |
| Wandering | 6448 AUD pp |
| Royal | 7552 AUD pp |

Wild Earth Travel

Small Ships, Big Adventures

wildearth-travel.com

info@wildearth-travel.com

PRICING

11-Oct-2026 to 18-Oct-2026

| | |
|-----------------|-------------|
| Buller's | 5508 AUD pp |
| Salvin's Double | 6128 AUD pp |
| Salvin's Twin | 6128 AUD pp |
| Wandering | 6448 AUD pp |
| Royal | 7552 AUD pp |

18-Oct-2026 to 25-Oct-2026

| | |
|-----------------|-------------|
| Buller's | 5508 AUD pp |
| Salvin's Double | 6128 AUD pp |
| Salvin's Twin | 6128 AUD pp |
| Wandering | 6448 AUD pp |
| Royal | 7552 AUD pp |



Wild Earth Travel

Small Ships, Big Adventures

wildearth-travel.com

info@wildearth-travel.com

SPECIAL OFFERS

Online prices reflect current special offers and may vary. This promotion is time - limited and subject to availability. Terms and conditions apply. For more information, please contact us.

Wild Earth Travel

Small Ships, Big Adventures

0800 945 3327 (within New Zealand) | +64 (0) 3 365 1355 | **1800 107 715** (within Australia)

info@wildearth-travel.com | **wildearth-travel.com**