

# Wild Earth Travel

*Small Ships, Big Adventures*



**wildearth-travel.com**

**info@wildearth-travel.com**

## TUAMOTU ISLANDS CRUISE: MAKATEA, MATAIVA & ANAA

This expedition will discover these pearls of the Tuamotu: Makatea, unique with its immense cliffs, Mataiva and its colorful lagoon and Anaa's intense blue will be forever etched into our memories.

### Tuamotu Islands



### ITINERARY

**Day 1** Departure from Tahiti (Papeete).

Departure from Papeete in the afternoon, welcome of our crew and navigation to the Tuamotu archipelago.

**Day 2** Makatea

Surrounded by sheer cliffs rising nearly 240 feet above sea level, Makatea is the only atoll in the Tuamotu Islands with potable water, which comes from its underground caves. Once a prosperous atoll due to the exploitation of phosphates from 1917 until 1964, it has become almost completely deserted, with only a few families left. Today, the inhabitants live from copra cultivation, fishing and the trade of the coconut crab, the "Kaveu". Anaa offers the

Wild Earth Travel

*Small Ships, Big Adventures*

**0800 945 3327** (within New Zealand) | +64 (0) 3 365 1355 | **1800 107 715** (within Australia)

info@wildearth-travel.com | wildearth-travel.com

# Wild Earth Travel

*Small Ships, Big Adventures*



**wildearth-travel.com**

**info@wildearth-travel.com**

opportunity to visit the remains of Makatea's past and its phosphate mining. Passengers will disembark by tender at the Temao wharf and begin the journey across the island on foot or by car. Visit the sacred caves of Makatea and picnic under the cliffs or on the beach.

## Day 3 Mataiva

Mataiva has everything to dazzle travelers. Its unique lagoon and white sand beaches make it one of the most sumptuous atolls in French Polynesia. Mataiva, which is easily accessible from Tahiti, has preserved its authenticity and tranquility. Here, there is little tourism, and the inhabitants are welcoming, kind and warm.

Passengers will disembark by tender at the Pahua wharf and will be greeted by a performance of "Orero". The village is a 5-minute walk from the dock, and you can visit it at your own leisure.

Optional excursions will be offered such as the visit of the "Turtle Rock", the "Paure" marae, the phosphate pond, the bird motu and the "pito" of Mataiva (sign-up at the reception). 4x4 vehicles will take you to a private beach for a picnic and to enjoy the lagoon.

## Day 4 Anaa

Anaa, the birthplace of Tahiti's royal family, the Pomare dynasty, has entered the history books.

Today, Anaa is best known for its sparkling green jade lagoon and the picturesque white sand motus surrounding it. Most of the population is engaged in copra oil production or fishing, which has led to the development of the island's sustainable fishing program. Look out for the "feo", the gigantic, fossilized coral blocks that are characteristic of the atoll.

Passengers will disembark by tender at the Tukuhora pier. By bus or on foot, they will be able to visit the village and its specificities. The shallow, translucent lagoon is ideal for fly fishing, an activity offered at Anaa. A picnic lunch is offered on the beach in Tukuhora village.

Optional activities: discovery and swimming at the pito "Ogoogo".

## Day 5 Tahiti (Tautira - Papeete)

Tautira means "the mast of a double hull canoe laid on the ground". Commune located on the isthmus of the island of Tahiti. It is part of the Commune of East Taïarapu, which includes Tautira, Faaone, Afaahiti (Taravao) and Pueu. It was for a long time one of the most important districts of Tahiti with Vehiatua as its chief, who proclaimed the independence of East Taïarapu in 1768 and who led his commune to gain supremacy over the whole island in 1773.

Passengers will disembark by tender at the Vereiti site where the band Pepena will perform for a local atmosphere. They will be able to snorkel at the beach, visit a taro factory located at a 5-minute walking distance and enjoy going to the river. Departure of the excursions to the "Te Pari" at the Vereiti pontoon (sign-up at the reception). The "maa Tahiti" will be served following the return of the excursions.

This is the end of our journey. It's time to say N n ! (Goodbye) to your travel companions, to the Polynesian staff and Aranui guides.

### Please note:

Itineraries are subject to change.



# Wild Earth Travel

*Small Ships, Big Adventures*



**wildearth-travel.com**

**info@wildearth-travel.com**

## YOUR SHIP: ARANUI 5

<b>YOUR SHIP:</b>	<b>Aranui 5</b>
<b>VESSEL TYPE:</b>	<b>Passenger ship</b>
<b>LENGTH:</b>	<b>126 m</b>
<b>PASSENGER CAPACITY:</b>	<b>260</b>
<b>BUILT/REFURBISHED:</b>	

Speed: 15 knots

The Aranui is a mixed passenger/cargo vessel that operates between Tahiti and the Marquesas.

It offers comfortable, air-conditioned accommodations for about two hundred passengers. Passengers will be able to sunbathe on deck, swim in the pool, or enjoy exotic tropical drinks while the Aranui winds her way among the islands of the Marquesas. Accommodations classes are Suites, Deluxe, Standard and C Class.

The vessel operates under the French flag, and her crew are all Polynesian, primarily Marquesans.

The name "Aranui" means "The Great Highway" in Maori, another great Polynesian culture. The first Aranui was purchased from a New Zealand ship owner in 1959. CPTM kept her original name, because it suited her. Serving as a link between the remote Marquesas and the rest of the world, she truly was a "Great Highway" on which cargo and passengers traveled. The original Aranui was too small to meet the needs of the islands as trade increased. CPTM therefore retired her, and purchased a new vessel, which was also named the Aranui.

The second Aranui was originally built as a freighter for the

Baltic trades, with unusually thick hull plates because of floating ice often found in that area. She was modified in Germany in 1990. After only a few years in service, it too was getting too small again to meet the islands growing trade needs as well as the increase in passenger travel. CPTM decided this time to built a new vessel in 2000, which was named the Aranui III.

The Aranui III was built in Romania as a freighter and passenger vessel. Because of the number of passengers the vessel can carry, she was reclassified as a passenger vessel. Thus, meeting the strict requirements of international SOLAS (Safety of Life at Sea) regulations and many safety features including life boats and life rafts and fire safety systems.

The vessel is French registry, and crewed primarily by Marquesans. They are extremely skillfull and very hospitable. It is often their custom to give an impromptu concert in the evenings, both for their own and our passengers pleasure.

The ship features a small boutique where various sundries, clothing and souvenirs are available. There are washing machines and dryers aboard, but dry cleaning is not available. There is also 2 bars and video room, which has a television, VCR and a small collection of videotapes. She also has a swimming pool and sunbathing space.

The electrical current in the cabins is 220 volt 50 cycle AC, using French-style plugs. If you have any small appliances, please make sure you have voltage converters and plug adapters needed to use the ship's standard power. The vessel accepts traveler's checks and credit cards for on-board purchases. We regret that we cannot honor personal checks. Lock boxes are available on board for passenger convenience.

**Wild Earth Travel**  
*Small Ships, Big Adventures*

**0800 945 3327** (within New Zealand) | +64 (0) 3 365 1355 | **1800 107 715** (within Australia)

info@wildearth-travel.com | **wildearth-travel.com**

# Wild Earth Travel

*Small Ships, Big Adventures*



**wildearth-travel.com**

**info@wildearth-travel.com**

However, we do not accept custody or responsibility for passenger valuables or money.

Facilities:

- 1 dining room
- 2 spacious lounges & 2 conference rooms
- 4 bars including 1 panoramic bar (Skybar)
- 1 fitness room
- 1 outside swimming pool
- 1 shop
- 1 massage room
- 2 lifts



r/> 2 lifts

Wild Earth Travel

*Small Ships, Big Adventures*

**0800 945 3327** (within New Zealand) | +64 (0) 3 365 1355 | **1800 107 715** (within Australia)

info@wildearth-travel.com | **wildearth-travel.com**



## INSIDE YOUR SHIP



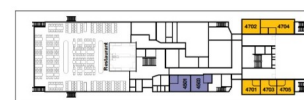
MAIN DECK-3



LOWER DECK-2



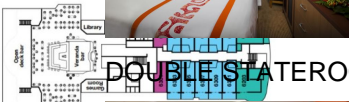
BOAT DECK-5



UPPER DECK-4



DELUXE



DOUBLE STATEROOM



JUNIOR SUITE WITH OR WITHOUT BALCONY



PRESIDENTIAL SUITE



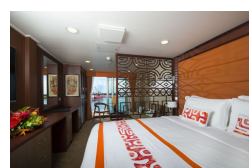
DORMITORY - CLASS C - 4 BEDS



DOUBLE STATEROOM WITH OBSTACLE



PREMIUM SUITE



ROYAL SUITE



# Wild Earth Travel

*Small Ships, Big Adventures*



**wildearth-travel.com**

**info@wildearth-travel.com**

## PRICING

**22-May-2026 to 26-May-2026**

<b>DORMITORY - CLASS C - 4 BEDS</b>	<b>2655 NZD pp</b>
<b>DOUBLE STATEROOM WITH OBSTRUCTED VIEW</b>	<b>3878 NZD pp</b>
<b>DOUBLE STATEROOM</b>	<b>4048 NZD pp</b>
<b>DELUXE</b>	<b>4812 NZD pp</b>
<b>SUPERIOR DELUXE</b>	<b>5159 NZD pp</b>
<b>JUNIOR SUITE WITH OR WITHOUT BALCONY</b>	<b>5240 NZD pp</b>
<b>SINGLE STATEROOM</b>	<b>5417 NZD pp</b>
<b>PREMIUM SUITE</b>	<b>5525 NZD pp</b>
<b>ROYAL SUITE WITH OBSTRUCTED VIEW</b>	<b>5567 NZD pp</b>
<b>ROYAL SUITE</b>	<b>5791 NZD pp</b>
<b>PRESIDENTIAL SUITE</b>	<b>7206 NZD pp</b>