



# Wild Earth Travel

*Small Ships, Big Adventures*

**wildearth-travel.com**

**info@wildearth-travel.com**

## A TROPICAL ODYSSEY IN CENTRAL AMERICA LUXURY CRUISE

On this 11-day cruise aboard Le Champlain, you will sail the Caribbean Sea discovering the lush landscapes of Central America, exploring the region's historical cities to learn more about their history, sharing with the local populations and creating unforgettable memories.

Throughout your journey, you will benefit from an excursion included per person per port of call, to choose from a selection offered by PONANT. During this cruise, dive into incredible Mayan history from Santo Tomas de Castilla, as you discover the pyramids and sanctuaries of the Quirigua archaeological site, a UNESCO World Heritage Site. From Puerto Limon, sail along the labyrinthine canals of the Tortuguero National Park, in the heart of a tropical forest featuring fascinating fauna and flora, or discover traditional cocoa growing in a Ngobe village on the island of San Cristobal, from Bocas Del Toro.

During your odyssey aboard Le Champlain, expect to hear birdsong and see dense tropical forests and the intertwined roots of mangrove burgeoning with life. On the Rio Dulce, aboard small local boats, discover gorges shaped by the river opening onto lush vegetation, a haven of peace for many birds, such as cormorants, egrets and pelicans. Another little-known and pristine paradise, in Honduras, La Ensenada invites you to discover a unique ecosystem, at the Lancetilla Botanical Garden, the largest tropical gardens in the Americas. In Puerto Limon, the Puerto Vargas Reserve, in the Cahuita National Park, is home to exuberant wildlife, including howler monkeys, white-faced capuchin monkeys, sloths, coatis, agoutis... mere

steps away from idyllic beaches.

Fans of swimming and immaculate landscapes will not be left out either. In the Caribbean Sea, on the little volcanic island of Providence, a former buccaneer hideout off the coast of Nicaragua, make the most of the abundant turquoise waters and beaches fringed with coconut trees to immerse yourself in the gentleness of the Caribbean. Off the coast of Isla Utila, the Water Caye islet unfurls its stretches of white sand along an azure sea, truly an invitation to lose yourself in thought and relax.

From one port of call to the next, you will also be able to seize the opportunity to share unforgettable moments with local communities. In Santo Tomas de Castilla, the Garifuna community will welcome you with a unique performance of traditional dance and music aboard the ship. In Panama, on the Bocas del Toro archipelago, famous for its rich underwater and terrestrial biodiversity, you will learn about a different history, that of the country's largest indigenous community, the Ngobe-Bugle.

Wild Earth Travel

*Small Ships, Big Adventures*

**0800 945 3327** (within New Zealand) | +64 (0) 3 365 1355 | **1800 107 715** (within Australia)

info@wildearth-travel.com | **wildearth-travel.com**

# Wild Earth Travel

*Small Ships, Big Adventures*

[wildearth-travel.com](http://wildearth-travel.com)

[info@wildearth-travel.com](mailto:info@wildearth-travel.com)



In the waters of the Rio Dulce flows a part of the Caribbean soul. Lanchas, the motor boats that travel along the river and the Caribbean Sea, are the only way of reaching this small, welcoming town with no overland access to the rest of the country. Here, you are in Garifuna country: the inhabitants, descendent from Jamaican slaves, perpetuate their culture through oral tradition and ceremonies. Garifuna music, which is lively and sounds similar in some respects to reggae, and Garifuna dance, to the beat of drums, have both been classified by UNESCO as "Masterpieces of the Oral and Intangible Heritage of Humanity".

## Day 3 SANTO TOMÁS DE CASTILLA

A port city located in the north-east of Guatemala, on the coast of the Amatique Bay, Santo Tomas de Castilla offers exceptional access to the fabulous Mayan archaeological site of Quirigua. Listed as a UNESCO World Heritage Site since 1981, this place takes you back in time, deep into a decor of ruins and vestiges from the 8th century.

## Day 4 LA ENSENADA

Lying on the Honduran shores, the small community of La Ensenada will charm you with its gentle way of life and breathtaking landscapes. Make the most of a timeless moment to go and meet the local population and learn more about their day-to-day lives and their customs. The mangrove, a unique ecosystem teeming with life, will also reveal itself to you with the possibility of a river cruise aboard a local boat.

## Day 5 WATER CAYE, ISLA UTILA

The Bay Islands archipelago is home to stunning cays, sheltered coral islets with warm, crystal-clear turquoise waters. Off the island of Utila, the white-sand beaches lined with palms and coconut trees and the reefs of the deserted islet called Water Caye offer a picture-postcard setting that will delight fans of swimming and snorkelling.

## Day 6 AT SEA

gobe-Bugle.

## ITINERARY

### Day 1 BELIZE CITY

Belize City is the former capital and the country's largest town. Located on the Caribbean Sea, this lively little town symbolises the fusion of British, Spanish and Maya cultures. The departure point for flights over the Great Blue Hole and the barrier reef, it's also the ideal gateway for discovering the treasures of Maya architecture: in the heart of the jungle, the grandiose and mysterious ruins of temples and palaces at the Lamanai and Xunantunich sites await you. Another unmissable experience: a trip to the mouth of the Belize River: with a little luck and care, you'll get a glimpse of manatees, dolphins, crocodiles, iguanas and many aquatic bird species.

### Day 2 DULCE RIVER

Wild Earth Travel

*Small Ships, Big Adventures*

0800 945 3327 (within New Zealand) | +64 (0) 3 365 1355 | 1800 107 715 (within Australia)

[info@wildearth-travel.com](mailto:info@wildearth-travel.com) | [wildearth-travel.com](http://wildearth-travel.com)





# Wild Earth Travel

*Small Ships, Big Adventures*

**wildearth-travel.com**

**info@wildearth-travel.com**

During your day at sea, make the most of the many services and activities on board. Treat yourself to a moment of relaxation in the spa or stay in shape in the fitness centre. Depending on the season, let yourself be tempted by the swimming pool or a spot of sunbathing. This day without a port of call will also be an opportunity to enjoy the conferences or shows proposed on board, to do some shopping in the boutique or to meet the PONANT photographers in their dedicated space. As for lovers of the open sea, they will be able to visit the ship's upper deck to admire the spectacle of the waves and perhaps be lucky enough to observe marine species. A truly enchanted interlude, combining comfort, rest and entertainment.

## Day 7 SAN ANDRÉS AND PROVIDENCIA ARCHIPELAGO

The Isla de Providencia, an insular Colombian territory near the coast of Nicaragua, is part of the Archipelago of San Andres. Nicknamed the "flower of the ocean", its clear and warm waters and lush tropical forests are surrounded by legends and stories of pirates. The beauty of its underwater life has earned it the title of UNESCO Biosphere Reserve. You'll be able to discover the island's natural riches during a walk or while snorkelling. The Isla de Providencia offers an enchanted interlude and the serenity of balanced and preserved nature, home to pretty and colourful houses.

## Day 8 PUERTO LIMÓN

We're pretty sure the little coastal town of Puerto Limon will completely win your heart. It is located on the Caribbean sea. Just beyond the harbour, Playa Bonita creek opens its arms to a haven of beauty rimmed by clear blue waters and shaded by giant peach-palms. If you wish to explore the lush green areas in the town, it's worth taking a stroll through the lemon groves that give Puerto Limon its name. You'll have all the time in the world to mosey around the streets scattered with multicoloured wooden makeshift stalls. These makeshift bars with their raffia roofs offer fresh juices blended just for you.

## Days 9 - 10 BOCAS DEL TORO

Heavenly stretches of beach with opalescent sand, virgin rainforest, traditional houses in flamboyant colours... the Bocas del Toro Archipelago welcomes you in a gentle, typically Caribbean atmosphere. Anchored to the north-west coast of Panama, this lush and wild Eden is composed of nine main islands

surrounded by thousands of verdant islets. Boasting a rich biodiversity, this lost paradise is home to the only national marine park in Panama: Isla Bastimentos. This stunning reserve protects an exceptional marine ecosystem composed of a rich coral reef and more than 200 species of colourful fish.

## Day 11 COLÓN

Colon is the second largest city in Panama, at the Caribbean entrance of the Panama Canal. Colon is today an important port, and the free trade zone created in 1953 contributed greatly to the development of the city. Colon was founded in 1850 by Americans working on the Panama railroad connecting the Atlantic and Pacific coasts through the isthmus of Panama; the city rapidly overshadowed the older Caribbean ports of Panama when the canal opened.

### Please Note:

Itineraries are subject to change.

**Wild Earth Travel**  
*Small Ships, Big Adventures*

**0800 945 3327** (within New Zealand) | +64 (0) 3 365 1355 | **1800 107 715** (within Australia)

info@wildearth-travel.com | **wildearth-travel.com**



# Wild Earth Travel

*Small Ships, Big Adventures*

**wildearth-travel.com**

**info@wildearth-travel.com**

## YOUR SHIP: LE CHAMPLAIN

<b>YOUR SHIP:</b>	<b>Le Champlain</b>
<b>VESSEL TYPE:</b>	<b>Luxury</b>
<b>LENGTH:</b>	<b>127 metres</b>
<b>PASSENGER CAPACITY:</b>	<b>92 cabins</b>
<b>BUILT/REFURBISHED:</b>	<b>2017/2018</b>

Featuring innovative and environmentally-friendly equipment, elegantly designed cabins, spacious suites with large windows, and lounge areas that open onto the outside, this new limited-capacity yacht boasting just 92 cabins and suites will offer you a truly unique cruising experience.

As the first ship in a new series, Le Champlain will embody the unique atmosphere that is the cruise line's hallmark: a subtle blend of refinement, intimacy and comfort.

Aboard this ship that flies the French flag, you will experience the incomparable pleasure of an intimate cruise, with the possibility of exploring an ever-increasing range of destinations in an ethnic-chic ambiance with luxury service.

Experience a luxurious setting where the accent is on authenticity and passion for travel.

### RESTAURANTS

As it is an essential part of French culture, gastronomy will naturally have pride of place aboard this new ship. Through its two restaurants, Le Champlain will invite you on a journey to elegance and epicureanism.

In a relaxed atmosphere, a first dining area located on Deck 3 and able to seat 70 will serve grilled meats daily, along with a

variety of salads and desserts.

To the back of Deck 4, you will find a 260 m<sup>2</sup> panoramic restaurant which can accommodate all of our passengers in a single sitting. Designed differently to that on our other ships, this dining area, which opens onto the outside, will have a buffet of salads, desserts and cheeses at your disposal. Our discreet and attentive crew will provide table service for hot meals.

### PUBLIC AREAS

Like Le Boreal and its sisterships, Le Champlain has many common areas that are designed and equipped to meet all of your needs while preserving the intimacy of each passenger.

A 140 m<sup>2</sup> reception area includes: A reception/concierge desk, An excursions desk, The ship's administrative services, The sales office, manned by our Guest Relations Officer, Our 50 m<sup>2</sup> boutique which sells clothing, jewellery, beauty products, postcards and various accessories, Toilets accessible to passengers with reduced mobility.

A new hydraulic platform with adjustable height provides: Easier boarding than on any other cruise ship, Easier Zodiac embarkation and disembarkation for expeditions, Easier access to the sea for swimming and practising various water sports such as kayaking or paddle-boarding.

A pool deck offering: A pool with a panoramic view, equipped with a counter-current swimming system, A pleasant solarium, An outdoor bar and lounge with armchairs and sofas.

A 200 m<sup>2</sup> main lounge which can accommodate all of our passengers to share convivial moments and to host activities organised during the day or evening.

Lastly, a theatre that seats 188, equipped with: The latest



Wild Earth Travel  
*Small Ships, Big Adventures*

**0800 945 3327** (within New Zealand) | +64 (0) 3 365 1355 | **1800 107 715** (within Australia)

info@wildearth-travel.com | **wildearth-travel.com**





# Wild Earth Travel

*Small Ships, Big Adventures*

**wildearth-travel.com**

**info@wildearth-travel.com**

sound and lighting technology, A LED wall as the stage backdrop, for the projection of high-resolution images and videos.



and videos.



## Wild Earth Travel

*Small Ships, Big Adventures*

**0800 945 3327** (within New Zealand) | +64 (0) 3 365 1355 | **1800 107 715** (within Australia)

info@wildearth-travel.com | **wildearth-travel.com**

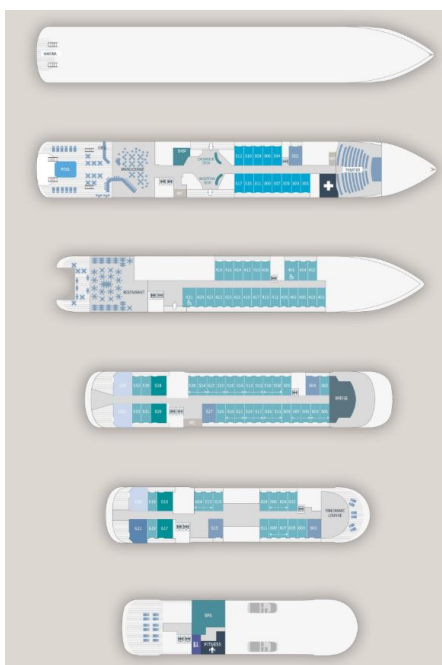
# Wild Earth Travel

*Small Ships, Big Adventures*

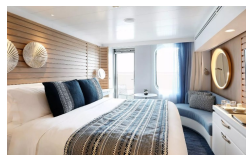
[wildearth-travel.com](http://wildearth-travel.com)

[info@wildearth-travel.com](mailto:info@wildearth-travel.com)

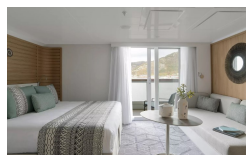
## INSIDE YOUR SHIP



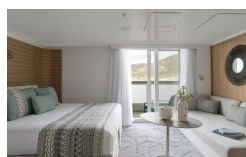
Deluxe Stateroom



Deluxe Suite Deck 4



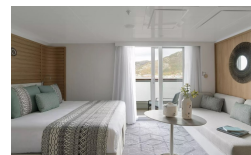
Deluxe Suite Deck 6



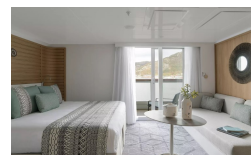
Grand Deluxe Suite Deck 6



Deluxe Suite



Deluxe Suite Deck 5



Grand Deluxe Suite



Owner's Suite



Wild Earth Travel  
*Small Ships, Big Adventures*

0800 945 3327 (within New Zealand) | +64 (0) 3 365 1355 | 1800 107 715 (within Australia)

[info@wildearth-travel.com](mailto:info@wildearth-travel.com) | [wildearth-travel.com](http://wildearth-travel.com)



# Wild Earth Travel

*Small Ships, Big Adventures*

**wildearth-travel.com**

**info@wildearth-travel.com**

## PRICING

### 03-Dec-2025 to 13-Dec-2025

Deluxe Stateroom	11310 AUD pp
Prestige Stateroom Deck 4	12410 AUD pp
Prestige Stateroom Deck 5	12970 AUD pp
Prestige Stateroom Deck 6	13630 AUD pp
Deluxe Suite Deck 6	17380 AUD pp
Deluxe Suite Deck 4	17380 AUD pp
Deluxe Suite	17380 AUD pp
Deluxe Suite Deck 5	17380 AUD pp
Prestige Suite Deck 5	20690 AUD pp
Prestige Suite Deck 6	21570 AUD pp
Privilege Suite	22250 AUD pp
Privilege Suite Deck 6	22250 AUD pp
Grand Deluxe Suite Deck 6	22910 AUD pp
Grand Deluxe Suite	22910 AUD pp
Owner's Suite	28000 AUD pp

### 09-Jan-2026 to 19-Jan-2026

Deluxe Stateroom	11560 AUD pp
Prestige Stateroom Deck 4	12710 AUD pp
Prestige Stateroom Deck 5	13290 AUD pp
Prestige Stateroom Deck 6	13980 AUD pp
Deluxe Suite Deck 4	17900 AUD pp
Deluxe Suite Deck 5	17900 AUD pp
Deluxe Suite	17900 AUD pp
Deluxe Suite Deck 6	17900 AUD pp
Prestige Suite Deck 5	21340 AUD pp
Prestige Suite Deck 6	22270 AUD pp
Privilege Suite	22950 AUD pp
Privilege Suite Deck 6	22950 AUD pp
Grand Deluxe Suite	23640 AUD pp
Grand Deluxe Suite Deck 6	23640 AUD pp
Owner's Suite	24330 AUD pp

### ADDITIONAL CHARGES:

Port Taxes & Fees 740 AUD pp



# Wild Earth Travel

*Small Ships, Big Adventures*



**wildearth-travel.com**

**info@wildearth-travel.com**

## SPECIAL OFFERS

Online prices reflect the current brochure fare savings of up to 30%. Prices may change based on demand. Terms and conditions apply. This special offer is subject to availability. Please contact us for more details.



**Wild Earth Travel**

*Small Ships, Big Adventures*

**0800 945 3327** (within New Zealand) | +64 (0) 3 365 1355 | **1800 107 715** (within Australia)

info@wildearth-travel.com | **wildearth-travel.com**