

Wild Earth Travel

Small Ships, Big Adventures

wildearth-travel.com

info@wildearth-travel.com

TROPICAL ODYSSEY BETWEEN NORTH EAST AUSTRALIA AND INDONESIA

Sail from island to island, experiencing idyllic landscapes and unforgettable encounters as you discover the riches of the Indonesian archipelago and the northern shores of Australia. Whether beginning in Bali, the celebrated "island of the gods," or in Cairns, gateway to Australia's tropical wonders, set off to explore a fascinating territory, home to Komodo dragons, karst islands, vibrant marine life, and captivating history. Between a few swims or snorkelling sessions, immerse yourself in the local Indonesian and Papuan communities, guardians of a thousand-year-old traditional way of life, and plunge into the mysteries of these remote lands, where lush, wild nature abounds.

The wildlife encounters are possible experiences and cannot be guaranteed.



ITINERARY

Day 1 CAIRNS

Washed by the Coral Sea, the harbour town of Cairns is located on Australia's north-east coast. The seafront esplanade is a popular place for locals and visitors to walk, swim and picnic under the shade of swaying palm trees. The hills surrounding Cairns form the gateway to the Queensland Rainforests, proclaimed a UNESCO World Heritage site for their fauna and flora from the Gondwana era.

Day 2 LIZARD ISLAND

Lizard Island is the northernmost resort Island on the Great Barrier Reef and boasts 24 powdery white sand beaches. Dominated by grasslands, the rugged

Wild Earth Travel

Small Ships, Big Adventures

0800 945 3327 (within New Zealand) | +64 (0) 3 365 1355 | **1800 107 715** (within Australia)

info@wildearth-travel.com | **wildearth-travel.com**



Wild Earth Travel

Small Ships, Big Adventures

wildearth-travel.com

info@wildearth-travel.com

beauty of Lizard Island contrasts sharply with the sparkling blue waters and rich fringing coral reefs surrounding the island. Lizard Island is known as Dyigurra to the Dinggaal Aboriginal people and is regarded as a sacred place. It was used for the initiation of young males and for the harvesting of shellfish, turtles, dugongs and fish. The Dinggaal believe that the Lizard group of islands had been created in the Dreamtime. After a short zodiac ride to the beach at Watson's Bay, guests can join a guided walk, relax on the beach or snorkel in the warm clear waters and view the clam gardens...

Day 3 AT SEA

During your journey at sea, make the most of the many services and activities on board. Treat yourself to a moment of relaxation in the spa or stay in shape in the fitness centre. Depending on the season, let yourself be tempted by the swimming pool or a spot of sunbathing. This journey without a port of call will also be an opportunity to enjoy the conferences or shows proposed on board, depending on the activities offered, or to do some shopping in the boutique or to meet the PONANT photographers in their dedicated space. As for lovers of the open sea, they will be able to visit the ship's upper deck to admire the spectacle of the waves and perhaps be lucky enough to observe marine species. A truly enchanted interlude, combining comfort, rest and entertainment.

Day 4 THURSDAY ISLAND

Located at Australia's northernmost tip, Thursday Island is one of more than a hundred in the Torres Strait, between Cape York Peninsula and Papua New Guinea. The historic military fort of Green Hill offers magnificent views and you can discover more about the region and its pearling history at the Gab Titui Cultural Centre.

Day 5 AT SEA

During your journey at sea, make the most of the many services and activities on board. Treat yourself to a moment of relaxation in the spa or stay in shape in the fitness centre. Depending on the season, let yourself be tempted by the swimming pool or a spot of sunbathing. This journey without a port of call will also be an opportunity to enjoy the conferences or shows proposed on board, depending on the activities offered, or to do some shopping in the boutique or to meet the PONANT photographers in their dedicated space. As for lovers of

the open sea, they will be able to visit the ship's upper deck to admire the spectacle of the waves and perhaps be lucky enough to observe marine species. A truly enchanted interlude, combining comfort, rest and entertainment.

Day 6 ASMAT, PAPUA

Occupying half the Island of New Guinea, Western New Guinea (once known as Irian Jaya) is one of the most remote and mysterious regions of the world. Even today, there are at least 44 tribes that have never had contact with the outside world. Nestled in the South West corner of the island is the Asmat region, long fabled as the realm of head-hunters and cannibals. Where ancient traditions of ancestor worship have resisted the influence of Christian missionaries. Today's expedition starts with a zodiac transfer to the village of Syuru where you will be met by a multitude of Asmat warrior canoes. Once ashore a traditional ceremony will take place. In the afternoon guests can undertake a guided walking tour of Agats township.

Day 7 AT SEA

During your journey at sea, make the most of the many services and activities on board. Treat yourself to a moment of relaxation in the spa or stay in shape in the fitness centre. Depending on the season, let yourself be tempted by the swimming pool or a spot of sunbathing. This journey without a port of call will also be an opportunity to enjoy the conferences or shows proposed on board, depending on the activities offered, or to do some shopping in the boutique or to meet the PONANT photographers in their dedicated space. As for lovers of the open sea, they will be able to visit the ship's upper deck to admire the spectacle of the waves and perhaps be lucky enough to observe marine species. A truly enchanted interlude, combining comfort, rest and entertainment.

Day 8 TRITON BAY, WEST PAPUA

Triton Bay is one of three regions in Indonesia's West Papua province that comprise the Bird's Head Seascape (the other two are Raja Ampat and Cenderawasih Bay), which is now considered by marine biologists to be the epicentre of the Coral Triangle. It contains more fish and coral species than anywhere else on the planet. Its unparalleled marine biodiversity and endemism, habitat richness, and relatively intact nature of its ecosystems are

Wild Earth Travel

Small Ships, Big Adventures

0800 945 3327 (within New Zealand) | +64 (0) 3 365 1355 | **1800 107 715** (within Australia)

info@wildearth-travel.com | **wildearth-travel.com**



Wild Earth Travel

Small Ships, Big Adventures

wildearth-travel.com

info@wildearth-travel.com

unique. Join your expedition team for a zodiac voyage through the spectacular rainforest capped karst islands. Later in the day enjoy the opportunity to explore the richness of the underwater realm.

Day 9 KITIKITI WATERFALL, MOMMON

North of Triton Bay, in the Indonesian province of West Papua, lie the Bomberai Peninsula and Sebakor Bay. A real paradise for divers, this protected, authentic and very wild area boasts an exceptional biodiversity. Here, you will be able to admire the superb Kitikiti Waterfall where you could enjoy a swim or snorkel surrounded by lush nature, both on land and under water.

Day 10 BANDA NEIRA, MALUKU ISLANDS

From age-old traditional cultures and ancient vestiges, to coral reefs and lush green jungle... The attractions of the remote Banda archipelago seem endless. Better known as the legendary "Spice Islands" of the Ancient World, these small volcanic landmasses were the fabled prize of colonial powers for more than four centuries. Every colonial power of significance fought for control of these ten small islands that today have become largely forgotten. Walking the streets of Banda Neira is a surreal experience as your eyes are drawn to the eclectic mix of Portuguese, Dutch and British architecture, the remnants of a rich and tumultuous history. It is without doubt the most historically significant and interesting of all the "Spice Islands".

Day 11 BARAT DAYA ISLANDS

If you are looking for exoticism and authenticity, then you will be captivated by the Barat Daya Islands, an Indonesian archipelago lying to the east of the Lesser Sunda Islands, bathed by the Banda Sea and surrounded by coral reefs. With their fine sandy beaches, marine environments, preserved nature and paddy fields, these islands in the Maluku archipelago are a real concentration of the beauty South-East Asia has to offer. A lush environment in which fauna and flora flourish. Notably, there are almost 162 different bird species including four endemic ones and three endangered ones.

Day 12 KALABAHI, ALOR

The unique culture of the Alorese continues among the Takpala indigenous group who have preserved their traditional architecture and ceremonies. The island of Alor is also known as the island of a Thousand Moko's. The Moko is a small bronze kettledrum which is believed to have originated from the Dong Son culture of Vietnam. However, it remains a mystery as to how these prehistoric Dong Son drums arrived in Alor. Local legend says that the Moko's were discovered buried in the ground, and indeed mokos are still being uncovered today. Join the expedition team and local guides for a tour by local transport to Takpala village, the Museum of a Thousand Mokos and the thriving main market of Kalabahi.

Day 13 MAUMERE, FLORES

Floresians have an ancient culture stretching back millennia before the first arrival of Europeans in search of trade opportunities. Their history is shared through oral traditions and is recreated in song and dance. The mountainous terrain of Flores has preserved the diversity of cultures and Maumere serves as the capital of the Sikka district and main trading port. Few tourists make it to Maumere with most stopping at Labuan Bajo and heading west to the islands of Komodo. Consequently, Maumere has kept its charming atmosphere, an eclectic mix of a bustling trading town and a coastal paradise. Join your expedition team and local guides for a tour by local transport to the markets and tribal villages in the hinterland of Maumere.

Days 14 - 15 KOMODO NATIONAL PARK

Between the islands of Sumbawa and Flores, Komodo National Park welcomes you to discover its natural wonders. At the very heart of the Indonesian archipelago, the three islands that form it - Komodo, Rinca and Padar - owe their renown to the famous eponymous dragons, enormous lizards over two metres long, which live in its grassy savannah. This jagged and hilly volcanic territory belonging to the Sunda Islands is a UNESCO World Heritage Site because of its incredible terrestrial and marine biodiversity. Admire its palette of colours, intermingling the sparkling whites of the beaches, the deep blues of the coral-filled water and the soft greens of its pastures.

Day 16 BENOA, BALI

Wild Earth Travel

Small Ships, Big Adventures

0800 945 3327 (within New Zealand) | +64 (0) 3 365 1355 | **1800 107 715** (within Australia)

info@wildearth-travel.com | **wildearth-travel.com**



Wild Earth Travel

Small Ships, Big Adventures

wildearth-travel.com

info@wildearth-travel.com

If it's a taste of exotic authenticity you're after, prepare to be spell-bound by the island of Bali, tucked away in the heart of the Indonesian archipelago. The beauty and diversity of its landscapes, the depth and richness of its cultural heritage and the plethora of activities on offer here make Bali a little slice of heaven on Earth. The island's southern coast enthrals with its white sand beaches, its picturesque little fishing villages such as Benoa, and its hills patchworked with terraced rice paddies further inland. Nicknamed 'the Island of Gods' for its sumptuous temples, Bali is the beating heart of Indonesian Hinduism.

Please Note:

Itineraries are subject to change.



0800 945 3327 (within New Zealand) | +64 (0) 3 365 1355 | **1800 107 715** (within Australia)

info@wildearth-travel.com | **wildearth-travel.com**



Wild Earth Travel

Small Ships, Big Adventures

wildearth-travel.com

info@wildearth-travel.com

YOUR SHIP: LE JACQUES CARTIER

YOUR SHIP:	Le Jacques Cartier
VESSEL TYPE:	Luxury
LENGTH:	
PASSENGER CAPACITY:	92 cabins
BUILT/REFURBISHED:	2018/2019

Featuring innovative and environmentally-friendly equipment, elegantly designed staterooms, spacious suites with large windows, and lounge areas that open onto the outside, this new limited-capacity yacht boasting just 92 staterooms and suites will offer you a truly unique cruising experience.

As the sixth ship in a new series that remains true to the Ponant spirit, Le Jacques Cartier will embody the unique atmosphere that is the cruise line's hallmark: a subtle blend of refinement, intimacy and comfort.

Aboard this ship that flies the French flag, you will experience the incomparable pleasure of an intimate cruise, with the possibility of exploring an ever-increasing range of destinations in an ethnic-chic ambiance with luxury service.

Experience a luxurious setting where the accent is on authenticity and passion for travel.

RESTAURANTS

As it is an essential part of French culture, gastronomy will naturally have pride of place aboard this new ship.

To the back of Deck 4, you will find a 260 m² panoramic restaurant which can accommodate all of our passengers in a single sitting. Designed differently to that on our other ships, this

dining area, which opens onto the outside, will have a buffet of salads, desserts and cheeses at your disposal. Our discreet and attentive crew will provide table service for hot meals.

In a relaxed atmosphere, an outdoor grill on Deck 3 will serve grilled meats with a variety of salads and desserts.

PUBLIC AREAS

Le Jacques Cartier has many common areas that are designed and equipped to meet all of your needs while preserving the intimacy of each passenger.

A 140 m² reception area includes:

A reception/concierge desk,

An excursions desk,

The ship's administrative services,

The sales office, manned by our Guest Relations Officer,

Our 50 m² boutique which sells clothing, jewellery, beauty products, postcards and various accessories,

Toilets accessible to passengers with reduced mobility.

A new hydraulic platform with adjustable height provides:

Easier boarding than on any other cruise ship,

Easier Zodiac embarkation and disembarkation for expeditions,

Easier access to the sea for swimming and practising various water sports such as kayaking or paddle-boarding.

A pool deck offering:

A pool with a panoramic view, equipped with a counter-current swimming system,

A pleasant solarium,

An outdoor bar and lounge with armchairs and sofas.

A 200 m² main lounge which can accommodate all of our passengers to share convivial moments and to host activities

Wild Earth Travel

Small Ships, Big Adventures

0800 945 3327 (within New Zealand) | +64 (0) 3 365 1355 | **1800 107 715** (within Australia)

info@wildearth-travel.com | **wildearth-travel.com**

Wild Earth Travel

Small Ships, Big Adventures

wildearth-travel.com

info@wildearth-travel.com

organised during the day or evening.

Lastly, a theatre that seats 188, equipped with:

The latest sound and lighting technology,

A LED wall as the stage backdrop, for the projection of high-resolution images and videos.



and videos.

Wild Earth Travel

Small Ships, Big Adventures

0800 945 3327 (within New Zealand) | +64 (0) 3 365 1355 | **1800 107 715** (within Australia)

info@wildearth-travel.com | **wildearth-travel.com**

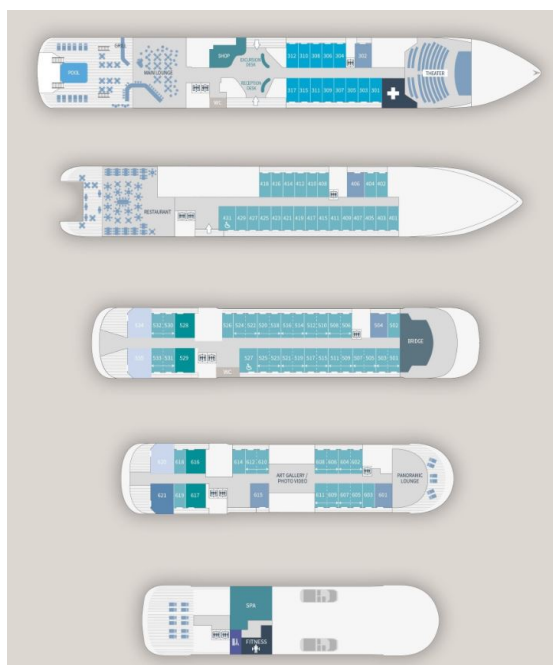
Wild Earth Travel

Small Ships, Big Adventures

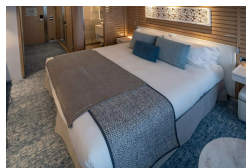
wildearth-travel.com

info@wildearth-travel.com

INSIDE YOUR SHIP

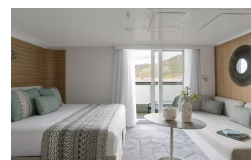


DELUXE STATEROOM

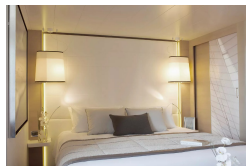


DeLuxe Stateroom

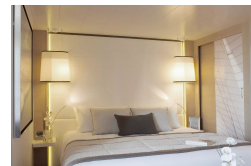
DELUXE SUITE



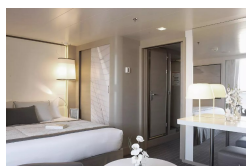
Deluxe Stateroom



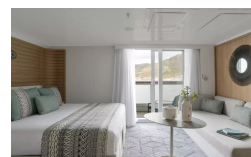
Deluxe Suite



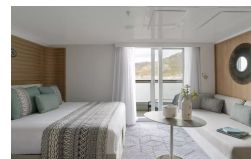
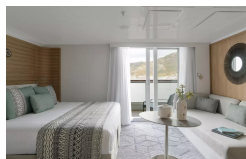
Deluxe Suite Deck 4



Deluxe Suite Deck 5



Deluxe Suite Deck 6



Wild Earth Travel

Small Ships, Big Adventures

0800 945 3327 (within New Zealand) | +64 (0) 3 365 1355 | 1800 107 715 (within Australia)

info@wildearth-travel.com | wildearth-travel.com

Wild Earth Travel

Small Ships, Big Adventures

wildearth-travel.com

info@wildearth-travel.com

PRICING

07-Oct-2025 to 22-Oct-2025

Superior Stateroom	15670 AUD pp
DeLuxe Stateroom	17000 AUD pp
Prestige Stateroom - Deck 4	18900 AUD pp
Prestige Stateroom - Deck 5	19850 AUD pp
Prestige Stateroom - Deck 6	21000 AUD pp
Deluxe Suite	29350 AUD pp
Prestige Suite - Deck 5	39800 AUD pp
Prestige Suite - Deck 6	41880 AUD pp
Owner's Suite	48150 AUD pp

05-Dec-2025 to 20-Dec-2025

Superior Stateroom	14210 AUD pp
DeLuxe Stateroom	15410 AUD pp
Prestige Stateroom - Deck 4	17120 AUD pp
Prestige Stateroom - Deck 5	17970 AUD pp
Prestige Stateroom - Deck 6	19010 AUD pp
Deluxe Suite	26520 AUD pp
Prestige Suite - Deck 5	35930 AUD pp
Prestige Suite - Deck 6	37800 AUD pp
Owner's Suite	47040 AUD pp

08-Dec-2025 to 23-Dec-2025

DELUXE STATEROOM	14610 AUD pp
PRESTIGE STATEROOM DECK 4	16230 AUD pp
PRESTIGE STATEROOM DECK 5	17030 AUD pp
PRESTIGE STATEROOM DECK 6	18010 AUD pp
Deluxe Suite Deck 4	25110 AUD pp
DELUXE SUITE	25110 AUD pp
Deluxe Suite Deck 6	25110 AUD pp
Deluxe Suite Deck 5	25110 AUD pp
PRESTIGE SUITE DECK 5	33990 AUD pp
PRESTIGE SUITE DECK 6	35760 AUD pp
PRIVILEGE SUITE	37540 AUD pp
Privilege Suite Deck 6	37540 AUD pp
Grand Deluxe Suite Deck 6	41250 AUD pp
GRAND DELUXE SUITE	41250 AUD pp
OWNER'S SUITE	49700 AUD pp

Wild Earth Travel

Small Ships, Big Adventures

0800 945 3327 (within New Zealand) | +64 (0) 3 365 1355 | **1800 107 715** (within Australia)

info@wildearth-travel.com | wildearth-travel.com



Wild Earth Travel

Small Ships, Big Adventures

wildearth-travel.com

info@wildearth-travel.com

PRICING

04-Dec-2026 to 19-Dec-2026

Superior Stateroom	11520 AUD pp
Deluxe Stateroom	12470 AUD pp
Prestige Deck 4	13830 AUD pp
Prestige Deck 5	14500 AUD pp
Prestige Deck 6	15320 AUD pp
Deluxe Suite	21290 AUD pp
Prestige Deck 5 Suite	28750 AUD pp
Prestige Deck 6 Suite	30240 AUD pp

Wild Earth Travel

Small Ships, Big Adventures

0800 945 3327 (within New Zealand) | +64 (0) 3 365 1355 | **1800 107 715** (within Australia)

info@wildearth-travel.com | **wildearth-travel.com**



Wild Earth Travel

Small Ships, Big Adventures

wildearth-travel.com

info@wildearth-travel.com

SPECIAL OFFERS

Online prices reflect the current brochure fare savings of up to 30%. Prices may change based on demand. Terms and conditions apply. This special offer is subject to availability. Please contact us for more details.

Wild Earth Travel

Small Ships, Big Adventures

0800 945 3327 (within New Zealand) | +64 (0) 3 365 1355 | **1800 107 715** (within Australia)

info@wildearth-travel.com | **wildearth-travel.com**