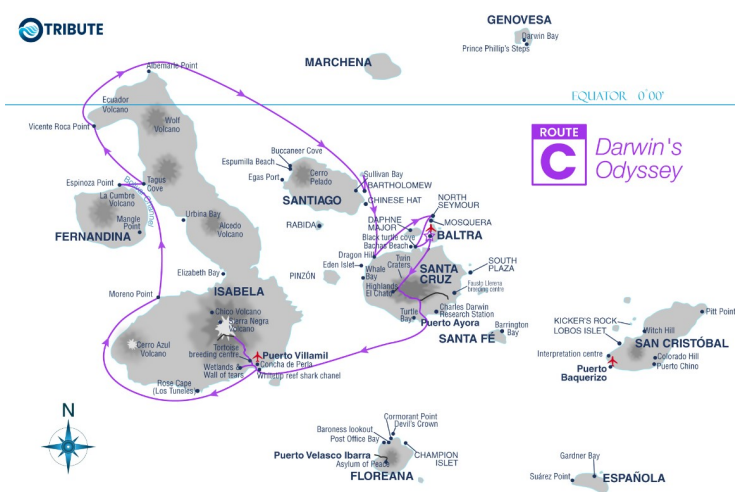


TRIBUTE LUXURY GALAPAGOS CRUISE C - DARWIN'S ODYSSEY

Embark on a 7-day Central & West Galapagos Safari, an expedition of epic proportions.

Your adventure begins at Baltra Airport, where the enchanting highlands of Santa Cruz beckon. Dive into the depths of Isabela, encountering the Tintoreras Shark Channel and the fiery Sierra Negra Volcano. Marvel at the tortoises of the breeding center and the mesmerizing wetlands.

Finalise your voyage at Las Bachas Beach where the sand here is made of decomposed coral, so it's white and soft, an ideal nesting site for sea turtles.



ITINERARY

DAY 1: THURSDAY AM: Flight to Baltra (GPS) PM: Highlands (Santa Cruz)

AM: Cruise starts at Baltra airport (GPS)

Arrival at Baltra Airport and transfer in. You must pay your Galapagos National Park entrance fee (unless it was pre-paid) and your luggage will be inspected. An ONIRIC CRUISES guide will meet you, help you collect your luggage, and escort you on a short bus ride to the harbour. Here you will climb aboard the yacht Tribute. After greeting the crew and the captain, your cabins will be assigned to you and then you will enjoy your first lunch aboard.

PM: Highlands (Santa Cruz)

Santa Cruz offers excellent opportunities for viewing wild Galapagos giant tortoises, roaming through pastures in the agricultural zone and in the transition zone of adjacent El Chato Tortoise Reserve.



Wild Earth Travel

Small Ships, Big Adventures

wildearth-travel.com

info@wildearth-travel.com

DAY 2: FRIDAY AM: Tintoreras Shark Channel, Sierra Negra Volcano (Isabela) **PM:** Tortoise breeding Center, Wetlands (Isabela)

AM: Tintoreras and Sierra Negra Volcano (Isabela)

While you were sleeping, we navigated to the western island of Isabela, the largest of the archipelago, and one of it's youngest, at 1 million years old. Your first visit here will be to the offshore islet of Tintoreras, remarkable for its breeding colony of large marine iguanas (each member measures up to 1.5 m/5 ft!). Snorkelling opportunities are excellent, as the site features a unique tidal channel with clear, turquoise waters, allowing you to swim alongside playful sea lions, marine turtles, marine iguanas, sting rays, and white tip sharks. Also, you have one of the best chances to see the only tropical penguin in the world. Afterwards, you will enjoy a tour to the Sierra Negra volcano. Bring a backpack with hiking & water shoes, sunglasses, hat, sunscreen and a light rain jacket. Sierra Negra is the only major volcano on Isabela which crater regions are currently open to tourism. Its impressive caldera of 10 km wide is the largest of the Galapagos Islands. The route followed is approximately 16 km long, and will reward you with dramatic geological and ecological contrasts. You will start today's tour to Sierra Negra boarding a local chiva-ride (open truck with wooden benches) leading from Puerto Villamil to the National Park Entrance. After crossing a barren lava flow with cacti and passing a flamingo lagoon, the main road leads through Isabela's surprisingly lush agricultural highlands. While gaining altitude, no less than five vegetation zones will be passed. A trail along the rim of Sierra Negra Volcano leads to a viewpoint where you can try to grasp the incomprehensible dimensions of its caldera (clear weather unpredictable, but thanks to prevailing winds fog usually tend to dissolve on approach). Songbirds will accompany you along the way, harmonizing the steaming volcanic landscapes.

PM: Wetlands, Wall of Tears and Tortoise Breeding centre (Isabela)

This afternoon's visit starts from the exotic beaches near the only urban population of Isabela, Puerto Villamil, and continues into dense mangrove forests. From the main dirt road, several side trails diverge and invite you to explore them, leading to intimate sites with dreamy brackish pools visited by amazingly tame song birds. The route continues into Muro de las Lagrimas (Wall of tears), a massive wall made of sharp lava chunks built by political prisoners during the 1950s, from the time when Isabela Island was a penal colony. Despite the sad story, it is an impressive memorial site worth visiting. Save some energy for a visit to the Tortoise Breeding Centre, a project created

to rescue the endangered tortoise population of the islands' volcanoes.

DAY 3: SATURDAY AM: Moreno Point (Isabela) **PM:** Espinoza Point (Fernandina)

AM: Moreno Point (Isabela)

During the night we navigated to the northwest coast of Isabela, where the Sierra Negra and Cerro Azul volcanoes are found. In between these two, we will disembark at Punta Moreno, where a trail that runs along a solidified black lava flow will lead us to a complex of tidal lagoons. In their waters, we might see sharks and marine turtles. Several species of birds will also be visible, including flamingos, which are found around the lakes and mangroves. This is a favorite excursion as it combines the opportunity to see coastal species with a hike through stunning landscapes.

PM: Espinoza Point (Fernandina)

Later, you will visit Espinoza Point, which is Fernandina's only terrestrial visitors site, and one of the few locations where you will find some bizarre animal species, products of natural selection. The figurehead is the emblematic flightless cormorant that lives exclusively in the remote west of Galapagos, and could be considered as the 'holy grail of evolution'. This bird lost its ability to fly, but instead became an agile marine hunter. You will also love the almost unworldly views with the dominating cone of Volcan La Cumbre as a spectacular backdrop. The narrow headland that you walk along is the end of a lava tongue that reached the coast and solidified upon contact with the water.

DAY 4: SUNDAY AM: Tagus Cove (Isabela) **PM:** Vicente Roca Point (Isabela)

AM: Tagus Cove (Isabela)

This morning's visit starts with a dinghy ride along the island's cliffs. This will provide you a good chance to spot the endemic Galapagos penguin, the only one of its species to live in the tropics. From the landing dock, it's a 30-minute hike along the trail to the top of the cliff, from where you can observe the iconic Darwin Lake (pictured). Look carefully at all the graffiti on the surrounding rocks, they were written by pirates, whalers and buccaneers in past centuries. Back at the coast, you could pick a kayak to explore these paradisiacal coastal environment.



Wild Earth Travel

Small Ships, Big Adventures

wildearth-travel.com

info@wildearth-travel.com

PM: Vicente Roca Point (Isabela)

Whilst having lunch we navigated across the Bolivar Channel for a final visit to Isabela island. While entering a dark cave below a spectacular arch, roaring echoes of the waves will accompany you. Just around the corner, the collapsed amphitheatre of the Ecuador volcano offers an impressive view. The calmer waters of the coves are well-protected against the ocean swell and are a fairly cold, but a great place for snorkelling amongst various species of shark, penguins, puffer fish and even seahorses!

DAY 5: MONDAY AM: Bartholomew PM: Sullivan Bay (Santiago)

AM: Pinnacle rock (Bartholomew)

The beautiful volcanic islet of Bartolome is among the youngest of the islands and, on a geological scale, was just recently born out of the fire. Although it looks deserted at first sight, Bartholomew offers some of the wildest landscapes and best panoramas of the entire archipelago. To enjoy the postcard view of the idyllic "Pinnacle Bay" you will have to climb the stairs to the viewpoint on top of the island (114 m/375 ft). Enter a dramatic world of threatening (though extinguished) nearby spatter cones, craters, and lightweight lava droplets that have been spewed out by fiery fountains. The summit trail is also ideal for witnessing how scanty pioneer vegetation, such as lava cactus, struggles to take root in the bare virgin lava fields.

PM: Sullivan Bay (Santiago)

The arrival in Sullivan Bay is like a moon landing. The desolate, sprawling fields seem to be out of this planet, therefore this island is very popular among photographers and geologists. The last eruption here occurred in 1897, and covered the bay with Pahoehe lava flows, which are characterized by smooth, gently undulating, or broadly hummocky surfaces. The beach nearby has clear, shallow waters that invite to snorkel, and if you venture to deeper waters, generous marine life can be found (like some Galapagos penguins on the rocks!). Moreover, Pacific green turtles, whitetip reef sharks (careless about humans), Galapagos sea lions, and rays are likely to make an appearance.

DAY 6: TUESDAY AM: Dragon Hill (Santa Cruz), Guy Fawkes Islet

PM: North Seymour

AM: Dragon Hill (Santa Cruz)

Dragon Hill hosts two key-species that are not too commonly distributed throughout the islands: Galapagos land iguanas and American flamingos. You will climb a hill with giant opuntia cacti where these animals feed and breed. This is a very photogenic spot as well, with breathtaking panoramas over the bay and towards an intriguing steep volcanic spout of red lava that overlooks the area. Dragon Hill has become popular because of its picturesque saline lagoons behind the beach, which contain minerals, algae and shrimp that attract abundance of seabirds.

PM - North Seymour

Seymour is an uplifted (as opposed to volcanic) island and therefore is generally flat and strewn with boulders. There are good nesting sites here for a large population of magnificent frigate birds. Blue-footed boobies perform their courtship dance in the more open areas and swallow-tailed gulls perch on the cliff edges. Despite the tremendous surf that can pound the outer shore, sea lions haul out onto the beach and can be found bodysurfing

DAY 7: WEDNESDAY AM: Las Bachas Beach (Santa Cruz)

Transfer to Baltra airport.

AM - Bachas Beach (Baltra)

Your last visit is to Bachas. Two conjunct beaches, with soft white sand that makes it a favourite nesting site for sea turtles. There is a small brackish water lagoon behind the first beach, where occasionally it is possible to observe flamingos and other coastal birds, such as black-necked stilts and whimbrels. The second beach is longer, and it has two old barges that were abandoned during the Second World War, when the USA used this Island as a strategic point to protect the Panama Channel. Now you will be transferred from Baltra to the dock in Puerto Ayora.

Please note:

Wild Earth Travel

Small Ships, Big Adventures

0800 945 3327 (within New Zealand) | +64 (0) 3 365 1355 | **1800 107 715** (within Australia)

info@wildearth-travel.com | **wildearth-travel.com**



Wild Earth Travel

Small Ships, Big Adventures

wildearth-travel.com

info@wildearth-travel.com

YOUR SHIP: TRIBUTE

YOUR SHIP:	Tribute
VESSEL TYPE:	Luxury Yacht
LENGTH:	43 meters
PASSENGER CAPACITY:	16
BUILT/REFURBISHED:	

Built/Refit: 2008/2023

Experience Galapagos in Luxury: Indulge in sophisticated design and breathtaking ocean views aboard our cruise. Savor local flavors in elegant indoor and outdoor dining areas. Retreat to premium suites with modern amenities. Relax in the outdoor Jacuzzi while soaking in stunning Galapagos vistas.

Amenities

Indulge in absolute luxury as you explore the Galapagos Islands with our Tribute Cruise. Enjoy the finest amenities, including a cocktail bar and wine vault, an ocean-view dining experience, and a delightful coffee and chocolate corner.

Our pop-up boutique offers exclusive treasures, while Freddy's lounge and library provide a tranquil escape.

The upper deck invites you to unwind in the sunset lounge, rejuvenate in the private massage area, or stay active in the workout zone.

On the sun deck, relish al fresco dining, savor a BBQ feast, and soak in breathtaking views from the panoramic lounge and sky tub. Your every desire is our pleasure.

Suites and Cabins

Immerse yourself in refinement aboard our Tribute Cruise.

Choose from our elegantly appointed suites and cabins to find your perfect sanctuary.

The Panorama Suites offer spacious comfort, with an average of 20m², and feature superior foam mattresses, a pillow menu, and individual air conditioning.

The Premium Suites, averaging 25m², include a convertible sofa, double washbasin, and extra storage.

Our Owner's Suite, an expansive 50m², boasts a resting lounge, double washbasin, and binoculars for wildlife enthusiasts.

For added convenience, our under-deck cabins provide privacy and comfort with private facilities and an average size of 18m². Enjoy every moment in style.

Elevated On-board Safety

Ensuring the utmost safety on-board is our paramount priority. We have proudly acquired the International Safety Management Certificate from the International Marine Organisation (IMO), demonstrating our unwavering commitment to safety protocols. Our vessel is equipped with state-of-the-art security equipment, adheres to stringent on-board regulations, and provides clear safety instructions.

Scheduled maintenance and rigorous inspections maintain our yacht in impeccable, secure condition, ensuring peace of mind for all our esteemed guests.



Wild Earth Travel
Small Ships, Big Adventures

0800 945 3327 (within New Zealand) | +64 (0) 3 365 1355 | **1800 107 715** (within Australia)

info@wildearth-travel.com | **wildearth-travel.com**



Wild Earth Travel

Small Ships, Big Adventures



wildearth-travel.com

info@wildearth-travel.com



med guests.



Wild Earth Travel

Small Ships, Big Adventures

0800 945 3327 (within New Zealand) | +64 (0) 3 365 1355 | **1800 107 715** (within Australia)

info@wildearth-travel.com | **wildearth-travel.com**

Wild Earth Travel

Small Ships, Big Adventures

wildearth-travel.com

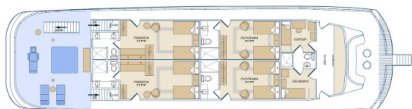
info@wildearth-travel.com

INSIDE YOUR SHIP

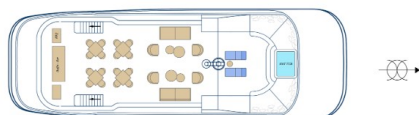
Main Deck



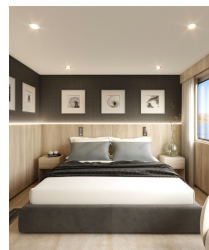
Upper Deck



Sun Deck



Suite. From



Wild Earth Travel
Small Ships, Big Adventures

0800 945 3327 (within New Zealand) | +64 (0) 3 365 1355 | 1800 107 715 (within Australia)

info@wildearth-travel.com | wildearth-travel.com

Wild Earth Travel

Small Ships, Big Adventures

wildearth-travel.com

info@wildearth-travel.com

PRICING

26-Jun-2025 to 02-Jul-2025

Suite. From 7995 USD pp

10-Jul-2025 to 16-Jul-2025

Suite. From 7995 USD pp

24-Jul-2025 to 30-Jul-2025

Suite. From 7995 USD pp

07-Aug-2025 to 13-Aug-2025

Suite. From 7995 USD pp

21-Aug-2025 to 27-Aug-2025

Suite. From 7995 USD pp

04-Sep-2025 to 10-Sep-2025

Suite. From 7995 USD pp

18-Sep-2025 to 24-Sep-2025

Suite. From 7995 USD pp

02-Oct-2025 to 08-Oct-2025

Suite. From 7995 USD pp

16-Oct-2025 to 22-Oct-2025

Suite. From 7995 USD pp

13-Nov-2025 to 19-Nov-2025

Suite. From 7995 USD pp

27-Nov-2025 to 03-Dec-2025

Suite. From 7995 USD pp

11-Dec-2025 to 17-Dec-2025

Suite. From 7995 USD pp

25-Dec-2025 to 31-Dec-2025

Suite. From 7995 USD pp

08-Jan-2026 to 14-Jan-2026

Suite. From 8495 USD pp

22-Jan-2026 to 28-Jan-2026

Suite. From 8495 USD pp

05-Feb-2026 to 11-Feb-2026

Suite. From 8495 USD pp

19-Feb-2026 to 25-Feb-2026

Suite. From 8495 USD pp

ADDITIONAL CHARGES:

Galapagos National Park entrance
fee & TCC 220 USD pp

Wild Earth Travel
Small Ships, Big Adventures

0800 945 3327 (within New Zealand) | +64 (0) 3 365 1355 | **1800 107 715** (within Australia)

info@wildearth-travel.com | wildearth-travel.com