

# Wild Earth Travel

*Small Ships, Big Adventures*

[wildearth-travel.com](http://wildearth-travel.com)

[info@wildearth-travel.com](mailto:info@wildearth-travel.com)

## TRANSARCTIC, THE QUEST FOR THE TWO NORTH POLES

In 1926, when Umberto Nobile crossed the Arctic via the North Pole, aboard the Norge airship that he designed himself, he became the first man in the world to undertake this crossing. It was an exploit that many would subsequently attempt to repeat. For, behind the idea of exploring our planet's last latitudes, there lies the prospect of raising our spirit, of matching our thirst for the unknown with our deep desire to gain a greater understanding of the world in which we live. Le Commandant Charcot, a ship of scientific opportunity, follows in the tradition of Nobile, a pioneer and a tireless architect of polar discovery, in order to discover some of the Arctic's secrets during a dedicated research mission at the highest point of the north. The ship, the latest addition to the company's fleet, shaped for polar exploration, is preparing to sail, a never travelled, transpolar maritime route, that is inaccessible to traditional ships. From the legendary Bering Strait, a link between the East and the West, to the ice-covered land of Svalbard, Le Commandant Charcot will carve out a path through the ice floes, exploring the ice of the Beaufort Sea, and use open water leads to attempt to reach the elusive Magnetic and Geographic North Poles. Like a pioneer, you will cross these ice-covered landscapes of the Arctic by sea. During your exploration, you will discover the research projects that are part of the scientific mission taking place on board. This is a unique opportunity to clarify your knowledge alongside a multi-disciplinary team of around twenty researchers on board, to understand their investigations and closely follow their work. Also accompanied by our expert naturalists, you will discover unique ecosystems while sharpening your perception of the polar world and comprehending the stakes of their

transformation. Use this journey to grant yourself an initiatory immersion: the rare occasion to take part in an adventure that is making a contribution to scientific research. Taking an all-new route means pledging to enter an unexplored world with respect, taking the time to observe and understand, as a conscious witness, the unfolding show. With your senses awakened, with the ice floe as your travel companion, you will move through an ever-changing environment, its hypnotic panoramas of raw beauty sculpted by sea winds and plays on light. In the heart of the drifting ice, you will savour the constantly renewed poetry of the elements.



e elements.

Wild Earth Travel

*Small Ships, Big Adventures*

0800 945 3327 (within New Zealand) | +64 (0) 3 365 1355 | 1800 107 715 (within Australia)

[info@wildearth-travel.com](mailto:info@wildearth-travel.com) | [wildearth-travel.com](http://wildearth-travel.com)



# Wild Earth Travel

*Small Ships, Big Adventures*

**wildearth-travel.com**

**info@wildearth-travel.com**

## ITINERARY

### Day 1 Embarkation Day - Seattle/Nome, NOME, ALASKA

Flight Seattle/Nome selected by PONANT. Approximate flight duration: 5 hours. We suggest you to be at the check-in counter 2 hours before departure. Meet & greet at the airport by our local English-speaking representative. Transfer to the pier for embarkation. Located along the Bering Strait at the westernmost point of Alaska, Nome offers the rustic charm of a former gold-mining town, set in the middle of magnificent wilderness. As you weave in and out of the brightly coloured houses, you will discover the pioneering legacy that still marks local traditions. Fishing, reindeer rearing, sledge-racing... People here live from their manual labour. The surrounding plains provide stunning vantage points for observing Arctic fauna.

### Days 2 - 9 EXPLORING SEA ICE IN BEAUFORT SEA

Bordering the north coasts of Alaska and Canada, the Beaufort Sea was feared for centuries because of its extreme climatic conditions. Covered for most of the year with a thick layer of ice, and unexplored until 1914, this part of the Arctic Ocean, named in honour of the British Admiral Francis Beaufort, will reveal its magnificent icy landscapes to you. With a bit of luck, maybe you will cross the path of some polar bears, since the region is renowned for sheltering the Lord of the Arctic.

### Day 10 GEOGRAPHIC NORTH POLE

Defined by a 90° North latitude, the Geographic North Pole lies on the Earth's rotational axis, at the intersection of all meridians. Plunged into darkness for six months of the year, then lit by the sun for the following six months, this mythical site, permanently covered in ice and remote from any land, has fascinated generations of explorers. So far, only a very few people have ever reached it: an exploit which is now accessible to you aboard Le Commandant Charcot.

### Day 11 EXPLORING SEA ICE IN BEAUFORT SEA

Bordering the north coasts of Alaska and Canada, the Beaufort Sea was feared

for centuries because of its extreme climatic conditions. Covered for most of the year with a thick layer of ice, and unexplored until 1914, this part of the Arctic Ocean, named in honour of the British Admiral Francis Beaufort, will reveal its magnificent icy landscapes to you. With a bit of luck, maybe you will cross the path of some polar bears, since the region is renowned for sheltering the Lord of the Arctic.

### Day 12 MAGNETIC NORTH POLE

The convergence point for the field lines of the Earth's magnetic field, the Magnetic North Pole attracts the magnetic needle of the compass. While the Geographic North Pole is the Earth's northernmost fixed point, marking the intersection of the Globe's rotation axis with the Earth's surface, the Magnetic North Pole moves over time. In fact, it is linked to the Earth's magnetic field which originates in the Earth's outer core, which is made up of molten metal and is subject to convection movements. Localised for the first time in 1831, in the Canadian Arctic, it has since moved towards Siberia and thus become closer to the Geographic North Pole. Set off in search of the Magnetic North Pole, try to get closer to it and, if luck allows it, attempt to reach it!

### Days 13 - 15 NAVIGATING THROUGH THE SEA ICE

Enjoy the absolutely unique experience of sailing to the heart of the ice floe, this vast expanse of virgin, immaculate ice. The landscapes are constantly changing, shifting from a smooth, flat wilderness to a chaos of ice, then to channels of open water. Your ship will sail along these naturally open channels and through the areas where the frozen layer is thinnest, offering you the chance to experience magic maritime moments in the midst of drifting sea ice. It will also often be an opportunity to see a particular kind of fauna, totally dependent on the ice floe.

### Day 16 NORDAUST-SVALBARD NATURE RESERVE

The Nordaust-Svalbard Nature Reserve has been protecting the northernmost and coldest part of the archipelago, Nordaustlandet (North East Land), since 1973. This vast polar desert covered by two ice caps is the second largest island in the Svalbard archipelago. Protected by the Gulf Stream, the fjords and cliffs in the west and north are home to large colonies of birds and walrus. The landscapes in the colder east and south are dominated by imposing glaciers that calve majestic icebergs in the vast Hinlopen Strait.

Wild Earth Travel  
*Small Ships, Big Adventures*

**0800 945 3327** (within New Zealand) | +64 (0) 3 365 1355 | **1800 107 715** (within Australia)

info@wildearth-travel.com | **wildearth-travel.com**





**wildearth-travel.com**

**info@wildearth-travel.com**

Large colonies of thick-billed murre have taken up residence on the sheer cliffs\*. You may even get the chance to see a bear or an Arctic fox roaming in the vicinity. \*depending on nesting and migration period

#### Day 17 SAILING IN THE HINLOPEN STRAIT

Sailing in the Hinlopen Strait, in the heart of the Arctic Ocean, between the Norwegian islands of Spitsbergen and Nordaustlandet promises an unforgettable experience. This territory of the Nordaust-Svalbard Nature Reserve offers breathtaking panoramas, with magnificent basalt formations and the ice cap stretching as far as the eye can see, diving into the sea. The shore line cut by the fjords moving inland composes a magical landscape in which icebergs float here and there, the result of the calving of the surrounding glaciers. This place, today a popular spot to observe the seabirds nesting in the enormous cliffs, polar bears and walruses, was once intrinsically linked to the history of the whalers who frequented the region from the 17th century. Indeed, it was one of them, Thijmen Jacobsz Hinlopen, then director of a Dutch whaling company, who gave the strait its name. Later on, Russian trappers, European explorers, scientists and even mountaineers roamed this region, as hostile as it is sublime.

#### Day 18 SORAUST-SVALBARD NATURE RESERVE

The Sørøst-Svalbard Nature Reserve is the second largest protected area in Norway. Established in 1973, this nature conservation area stretching over more than 21,000 km<sup>2</sup> will offer you stunning panoramas including coastal landscapes, rocky islets, mountain plateaux, vast tundra plains, and ice floes. With a little luck, you will be able to observe a wide variety of seabirds, given the site is listed as an Important Bird Area, as well as cetaceans, Svalbard reindeer, or even Arctic foxes. Among other things, Edgeoya Island is renowned for providing shelter to a number of polar bears during the breeding season.

#### Day 19 HORNSUND

Nestling between millennial glaciers and carved mountains, and considered to be "the crown of Arctic Norway", Spitsbergen is a place that never sees the night. Your ship will take you closer to this fascinating archipelago and, more particularly, the Hornsund fjord. Considered to be Svalbard's southernmost fjord, it is especially reputed to be its most stunning: at the end of its vast bay, 8 great glaciers slowly make their way down to the sea before giving way to the

many icebergs elegantly drifting along its cold and mysterious waters.

#### Day 20 ISFJORDEN

The vast Isfjorden is one of the main fjords in Svalbard. These different branches reach the heart of the island of Spitsbergen. Located deep inside the Billefjorden, the Nordenskiöld Glacier with its front of ice, nearly 5 km wide, is one of the most spectacular in the Svalbard Archipelago. You will perhaps have the opportunity to discover the ghost town of Pyramiden. Constructed at the foot of a mountain in the form of a pyramid, this former mining town, founded by Sweden at the beginning of the 20th century before being sold a few years later to the Soviet Union, and abandoned in 1998, has conserved all the buildings from its glory days, when it lived off coal mining.

#### Day 21 LONGYEARBYEN, SPITSBERGEN, Disembarkation Day - Longyearbyen/Paris

Longyearbyen is the capital of the Norwegian Svalbard archipelago, located on Svalbard's main island, and is the northernmost territorial capital on the planet. With winter temperatures dropping to below 40°C, the landscapes of this mining town are simply breathtaking. The glaciers, the mountains stretching as far as the eye can see and the untouched nature, make you feel like you're in completely unexplored territory. Disembarkation. Meet and greet at the port by our local English-speaking representative. According to the flight departure time from Longyearbyen, PONANT adapt its services or activities before your transfer to the airport in time for check-in for the PONANT selected flight from Longyearbyen to Paris. Flight Longyearbyen/Paris selected by PONANT. Approximate flight duration: 4 hours 30.

#### Please Note:

Itineraries are subject to change.



## YOUR SHIP: LE COMMANDANT-CHARCOT

<b>YOUR SHIP:</b>	<b>Le Commandant-Charcot</b>
<b>VESSEL TYPE:</b>	<b>Polar Luxury Expedition</b>
<b>LENGTH:</b>	<b>149.9 meters</b>
<b>PASSENGER CAPACITY:</b>	<b>135 cabins</b>
<b>BUILT/REFURBISHED:</b>	<b>2018/2019</b>

Be the first aboard Le Commandant-Charcot, the world's luxury polar exploration vessel, and enjoy a unique sailing experience in the Arctic or Antarctic!

With its hybrid propulsion combining liquefied natural gas (LNG) and electric generators, Le Commandant-Charcot has been designed to minimise the environmental impact of travel to the furthest latitudes.

The decoration of the ship, imagined by two internationally renowned design and architecture firms - the studio of Jean-Philippe Nuel and Wilmotte & Associates - is designed to be in harmony with the environment. The approach is contemporary with the desire to create a warm and elegant setting; stone, wood and leather recall the natural environment in which the ship is sailing.

Equipped with just 135 staterooms including 31 suites with balconies and outside views, Le Commandant-Charcot welcomes you in an intimate and refined atmosphere. Outstanding gastronomy in the two restaurants, relaxation in the indoor pool surrounded by its winter garden, relaxation in the well-being area with sauna and Snow Room... Like on a private yacht, each of our guests is unique.

### PUBLIC AREAS

Le Commandant-Charcot has many common areas that are designed and equipped to meet all of your needs while preserving the intimacy of each passenger.

A 177 m<sup>2</sup> reception area includes: A reception/concierge desk, An expeditions desk, The ship's administrative services, The sales office, manned by our Hospitality & Travel Manager officer, Our boutique which sells clothing, jewellery, beauty products, postcards and various accessories, The image & photo desk.

The different lounges: A 302 m<sup>2</sup> main lounge including a 28 m<sup>2</sup> cigar lounge, a tea corner and a bar, with live music on selected evenings, A 400 m<sup>2</sup> panoramic bar and lounge, An open-air Bar.

The recreation spaces

Fitness & Beauty Corner: Fitness room: Elliptic, running machines, bicycles...

Beauty Corner: Hairdresser, Massage rooms, Sauna, Snow Room, Nail Shop.

Pool area: Indoor Pool and winter garden - Outdoor Pool

Theatre: Capacity: 270-276 - Main show room for conferences and live entertainment on selected evenings - State-of-the-art audio and video technology.

Leisure area: Public areas - Library - Medical centre.

16 Zodiac®.



**Wild Earth Travel**  
*Small Ships, Big Adventures*

**wildearth-travel.com**

**info@wildearth-travel.com**



16 Zodiac®.

**Wild Earth Travel**  
*Small Ships, Big Adventures*

**0800 945 3327** (within New Zealand) | +64 (0) 3 365 1355 | **1800 107 715** (within Australia)

info@wildearth-travel.com | **wildearth-travel.com**

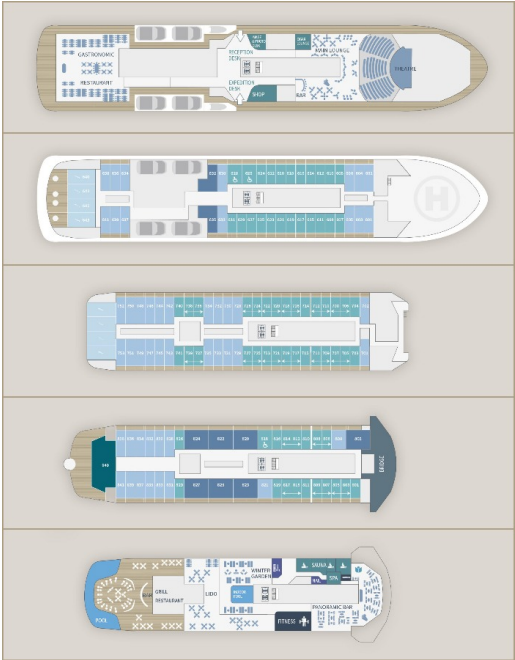


# Wild Earth Travel

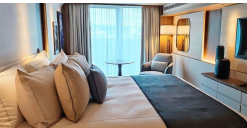
*Small Ships, Big Adventures*

[wildearth-travel.com](http://wildearth-travel.com)
[info@wildearth-travel.com](mailto:info@wildearth-travel.com)

## INSIDE YOUR SHIP



Deluxe Suite Deck 6



Deluxe Suite Deck 8



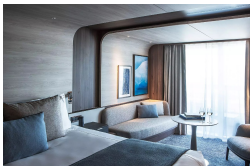
Owner's Suite



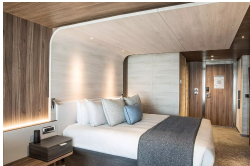
Prestige Stateroom Deck 7



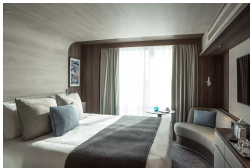
Deluxe Suite Deck 7



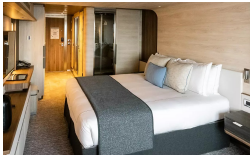
Grand Prestige Suite



Prestige Stateroom Deck 6



Prestige Stateroom Deck 8





# Wild Earth Travel

*Small Ships, Big Adventures*



**wildearth-travel.com**

**info@wildearth-travel.com**

## PRICING

**05-Sep-2025 to 25-Sep-2025**

<b>Prestige Stateroom Deck 6</b>	<b>82540 AUD pp</b>
<b>Prestige Stateroom Deck 7</b>	<b>84070 AUD pp</b>
<b>Prestige Stateroom Deck 8</b>	<b>85610 AUD pp</b>
<b>Deluxe Suite Deck 6</b>	<b>87910 AUD pp</b>
<b>Deluxe Suite Deck 7</b>	<b>91750 AUD pp</b>
<b>Deluxe Suite Deck 8</b>	<b>94820 AUD pp</b>
<b>Prestige Suite Deck 7</b>	<b>120910 AUD pp</b>
<b>Prestige Suite Deck 8</b>	<b>124730 AUD pp</b>
<b>Grand Prestige Suite</b>	<b>128580 AUD pp</b>
<b>Privilege Suite Deck 8</b>	<b>136250 AUD pp</b>
<b>Suite Duplex</b>	<b>186120 AUD pp</b>
<b>Owner's Suite</b>	<b>242890 AUD pp</b>

**ADDITIONAL CHARGES:**

**Port Taxes and Fees 1480 AUD pp**



Wild Earth Travel  
*Small Ships, Big Adventures*

**0800 945 3327** (within New Zealand) | +64 (0) 3 365 1355 | **1800 107 715** (within Australia)

info@wildearth-travel.com | **wildearth-travel.com**



**Wild Earth Travel**  
*Small Ships, Big Adventures*

**wildearth-travel.com**

**info@wildearth-travel.com**

**SPECIAL OFFERS**

Online prices reflect the current brochure fare savings of up to 30%. Prices may change based on demand. Terms and conditions apply. This special offer is subject to availability. Please contact us for more details.