

Wild Earth Travel

Small Ships, Big Adventures

wildearth-travel.com

info@wildearth-travel.com

ON THE TRAIL OF THE GOLD PROSPECTORS

Follow in the footsteps of the gold prospectors on this 8-day cruise brought to you by PONANT. This exceptional itinerary aboard Le Soléal will take you from Alaska to British Columbia, to discover magnificent landscapes marked by the Gold Rush. After embarking in Juneau, the capital of Alaska long inhabited by the Tlingit people, do not miss the chance to visit Skagway, where many pioneers came in search of gold at the end of the 19th century, and Haines, where majestic bald eagles are often spotted flying over the houses. Sailing along Tracy Arm, one of Alaska's most beautiful fjords, will undoubtedly be one of the highlights of your cruise. You will then discover Sitka, a former Russian settlement surrounded by tall mountains known for their centuries-old totem poles, and the small city of Ketchikan, home to charming, colourful stilt houses. Before disembarking in Vancouver, you will make your way down the east coast of Alaska, whose Inside Passage, shaped by the sculpture of imposing glaciers, is home to vertiginous fjords. Here, the natural environment includes glaciers, coniferous forests, and myriad islands and islets magnified by the wonderful play of light. Please note: your voyage rates include Transfer + flight Juneau / Seattle or Flight Seattle / Juneau + transfer.



ITINERARY

Day 1 JUNEAU, ALASKA

In 1880, gold diggers flocked here, and it didn't take long before Juneau was singled out, getting itself a solid reputation and henceforth becoming the capital of Alaska. Along the Gastineau Strait, in the heart of the spectacular Inside Passage, the 31,000 or so inhabitants of Juneau enjoy some of the world's most incredible fauna and scenery every day of their lives. Perhaps you'll even be able to watch the antics of humpback whales against a backdrop of majestic glaciers. Culture and shopping are certainly not lacking; the city is full of places to experience, enjoy and relax in.

Day 2 SKAGWAY, ALASKA

Wild Earth Travel

Small Ships, Big Adventures

0800 945 3327 (within New Zealand) | +64 (0) 3 365 1355 | 1800 107 715 (within Australia)

info@wildearth-travel.com | wildearth-travel.com

Wild Earth Travel

Small Ships, Big Adventures

wildearth-travel.com

info@wildearth-travel.com

In the 19th century, it was through Skagway, a small town in south-east of Alaska, that swarms of gold seekers passed in their quest for gold. You can get a sense of these pioneers as you wander along the main street, Broadway, edged with the painted houses typical of this region. From White Pass & Yukon Route station, trains across pristine landscapes over the Alaskan border. All around the town, a handful of paths taken by the seekers of the precious metal, fan out into superb natural surroundings offering a glorious scenery of mountains, waterfalls, lakes and glaciers.

Day 3 HAINES, ALASKA

Hidden in the heart of this spectacular wilderness, between jagged peaks and a sapphire ocean, the legendary small port of Haines lays out all the richness of its traditions. Founded by the Tlingit Indians, peopled by the pioneers of the famous gold rush, the village is now a rallying point for modern day adventurers. You can visit its streets trimmed with colourful houses, soak up local history at Fort Seward or visit the Indian art museums, before a possible excursion into the nearby wilderness. The very beautiful Chilkatriver is especially worth a visit.

Day 4 TRACY ARM FJORD, ALASKA

When you reach Tracy Arm fjord, 80 kilometres south-east of Juneau, you will sail into the middle of the inlet, surrounded by waterfalls cascading down granite cliffs into the sea. A few seals guarding their spur of ice may add unexpected spice to your expedition. This is your opportunity to see the Sawyer glacier close up. Majestic and otherworldly, it spans the whole length of the mountain in shades of crystalline blue: without a doubt, this is one of the most breath-taking wonders of Alaska.

Day 5 SITKA, ALASKA

Formerly a Russian colony located on Baranof island, to the west of the Alexander archipelago, Sitka is brimming with history. The historical national park of Sitka shelters totems carved out of red cedar, a tree that is omnipresent in the region. These totems are testimonials of the former presence of Tlingit Indians. This place is full of natural wonders too. You just have to look up to admire the mountain range around the port. In the distance, the snow-peaked Edgecumbe volcano stands majestic. Numerous islands scattered around Sitka stretch out before you in a vision of preserved Alaska.

Day 6 KETCHIKAN, ALASKA

The most southern town in the State is called Ketchikan. This spectacular doorway into the Inside Passage, the glory of Alaska cruises and the old world

capital of salmon will blow you away. It takes no time at all to realise how deeply peaceful this port and its surrounding wilderness is. Nearby, you can delve more deeply into the rich indigenous culture in the Totem Heritage Center, which houses one of the largest totem pole collections in the world. The town also offers a number of charming art galleries. Ketchikan's richness resides in its hospitality and sense of adventure.

Day 7 SAILING IN THE JOHNSTONE STRAIT & SEYMOUR NARROWS

Your ship will sail along Discovery Passage, between Vancouver Island and Quadra Island. As the channel tapers, you will arrive at Seymour Narrows, a narrow, 5-km long passage which, in the past, posed a significant challenge for sailors. Between 1850 and 1950, some one hundred ships hit the rocks hidden under the water, and the outcome was often fatal. At the time, due to the strong currents that run through Seymour Narrows, it was considered to be one of the most dangerous waterways in British Columbia. But in 1955, the decision was made to blow up Ripple Rock, two submerged rocks responsible for most of the shipwrecks. This historic explosion made access to this passage much safer.

Day 8 VANCOUVER

Verdant and cosmopolitan, Vancouver is one of Canada's most multi-cultural cities. Located in British Columbia on Canada's west coast, it's surrounded by mountains and outdoor activities are popular. In the city, you can immerse yourself in the Asian atmosphere of bustling Chinatown, shop for pashminas and silk saris at the Punjabi Market Indian district and explore the historic area of Gastown. Vancouver Art Gallery is known for works by regional artists, while the Museum of Anthropology houses important First Nations collections. Granville Island Jetty is a fascinating revitalised industrial area that hosts galleries, restaurants and a huge produce market.

Please Note:

The encounters with the wildlife described above illustrate possible experiences only and cannot be guaranteed.

Wild Earth Travel

Small Ships, Big Adventures

0800 945 3327 (within New Zealand) | +64 (0) 3 365 1355 | 1800 107 715 (within Australia)

info@wildearth-travel.com | wildearth-travel.com

Wild Earth Travel

Small Ships, Big Adventures

wildearth-travel.com

info@wildearth-travel.com

YOUR SHIP: LE SOLEAL

YOUR SHIP:	Le Soleal
VESSEL TYPE:	Luxury Small Ship
LENGTH:	142 metres
PASSENGER CAPACITY:	264
BUILT/REFURBISHED:	2013



Sailing under the French flag, this magnificent yacht of only 132 staterooms and suites, with balconies, joined in 2013. You will be enchanted by the contemporary decor inspired by the luxury yachting world, with fluid lines and a modern colour scheme combining natural wood with shades of grey and white.

A refined ambience is enhanced by the quality of the workmanship and materials: white Corian counters in the lobby contrast with the warmth of leather to recall a boat's hull, while the central sculpture of enamelled pieces takes its inspiration from the sea. In the loungebar, the carpet picks up a tennis stripe theme symbolising a certain idea of cruising, one synonymous with French elegance and a chic seaside spirit.

Wild Earth Travel

Small Ships, Big Adventures

0800 945 3327 (within New Zealand) | +64 (0) 3 365 1355 | 1800 107 715 (within Australia)

info@wildearth-travel.com | wildearth-travel.com

Wild Earth Travel

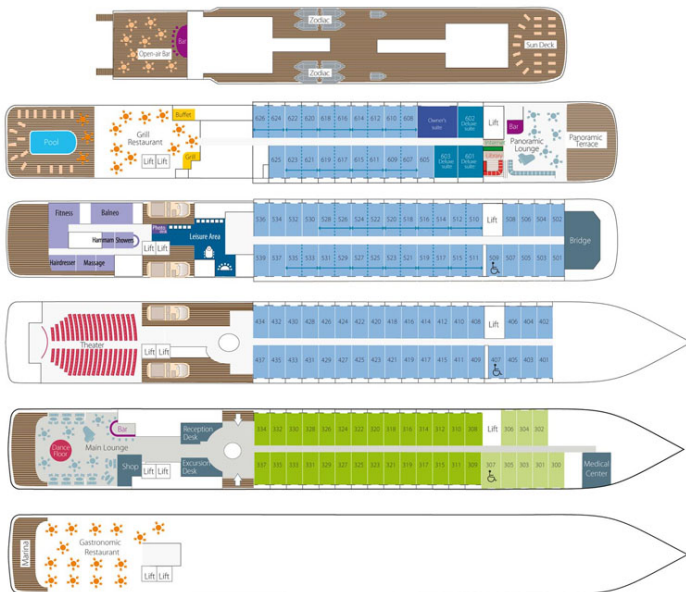
Small Ships, Big Adventures



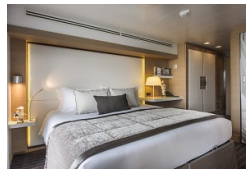
wildearth-travel.com

info@wildearth-travel.com

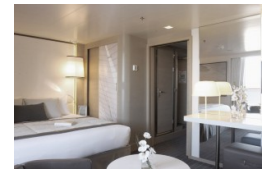
INSIDE YOUR SHIP



DeLuxe Stateroom



Deluxe Suite



Owner's suite



Prestige Stateroom - Deck 4



Prestige Stateroom - Deck 5



Prestige Stateroom - Deck 6



Prestige Suite - Deck 5



Prestige Suite - Deck 6



Wild Earth Travel

Small Ships, Big Adventures

wildearth-travel.com

info@wildearth-travel.com

PRICING

14-Jun-2021 to 21-Jun-2021

Superior Stateroom	8520 AUD pp
DeLuxe Stateroom	9100 AUD pp
Prestige Stateroom - Deck 4	9580 AUD pp
Prestige Stateroom - Deck 5	9830 AUD pp
Prestige Stateroom - Deck 6	10090 AUD pp
Deluxe Suite	13220 AUD pp
Prestige Suite - Deck 5	14180 AUD pp
Prestige Suite - Deck 6	14570 AUD pp
Owner's suite	15230 AUD pp

21-Jun-2021 to 28-Jun-2021

Superior Stateroom	8470 AUD pp
DeLuxe Stateroom	9050 AUD pp
Prestige Stateroom - Deck 4	9530 AUD pp
Prestige Stateroom - Deck 5	9780 AUD pp
Prestige Stateroom - Deck 6	10040 AUD pp
Deluxe Suite	13170 AUD pp
Prestige Suite - Deck 5	14130 AUD pp
Prestige Suite - Deck 6	14520 AUD pp
Owner's suite	15180 AUD pp

28-Jun-2021 to 05-Jul-2021

Superior Stateroom	8520 AUD pp
DeLuxe Stateroom	9100 AUD pp
Prestige Stateroom - Deck 4	9580 AUD pp
Prestige Stateroom - Deck 5	9830 AUD pp
Prestige Stateroom - Deck 6	10090 AUD pp
Deluxe Suite	13220 AUD pp
Prestige Suite - Deck 5	14180 AUD pp
Prestige Suite - Deck 6	14570 AUD pp
Owner's suite	15230 AUD pp

05-Jul-2021 to 12-Jul-2021

Superior Stateroom	8470 AUD pp
DeLuxe Stateroom	9050 AUD pp
Prestige Stateroom - Deck 4	9530 AUD pp
Prestige Stateroom - Deck 5	9780 AUD pp
Prestige Stateroom - Deck 6	10040 AUD pp
Deluxe Suite	13170 AUD pp
Prestige Suite - Deck 5	14130 AUD pp
Prestige Suite - Deck 6	14520 AUD pp
Owner's suite	15180 AUD pp

Wild Earth Travel

Small Ships, Big Adventures

0800 945 3327 (within New Zealand) | +64 (0) 3 365 1355 | 1800 107 715 (within Australia)

info@wildearth-travel.com | wildearth-travel.com

Wild Earth Travel

Small Ships, Big Adventures

wildearth-travel.com

info@wildearth-travel.com

PRICING

12-Jul-2021 to 19-Jul-2021

Superior Stateroom	8520 AUD pp
DeLuxe Stateroom	9100 AUD pp
Prestige Stateroom - Deck 4	9580 AUD pp
Prestige Stateroom - Deck 5	9830 AUD pp
Prestige Stateroom - Deck 6	10090 AUD pp
Deluxe Suite	13220 AUD pp
Prestige Suite - Deck 5	14180 AUD pp
Prestige Suite - Deck 6	14570 AUD pp
Owner's suite	15230 AUD pp

19-Jul-2021 to 26-Jul-2021

Superior Stateroom	8470 AUD pp
DeLuxe Stateroom	9050 AUD pp
Prestige Stateroom - Deck 4	9530 AUD pp
Prestige Stateroom - Deck 5	9780 AUD pp
Prestige Stateroom - Deck 6	10040 AUD pp
Deluxe Suite	13170 AUD pp
Prestige Suite - Deck 5	14130 AUD pp
Prestige Suite - Deck 6	14520 AUD pp
Owner's suite	15180 AUD pp

02-Aug-2021 to 09-Aug-2021

Superior Stateroom	8470 AUD pp
DeLuxe Stateroom	9050 AUD pp
Prestige Stateroom - Deck 4	9530 AUD pp
Prestige Stateroom - Deck 5	9780 AUD pp
Prestige Stateroom - Deck 6	10040 AUD pp
Deluxe Suite	13170 AUD pp
Prestige Suite - Deck 5	14130 AUD pp
Prestige Suite - Deck 6	14520 AUD pp
Owner's suite	15180 AUD pp

09-Aug-2021 to 16-Aug-2021

Superior Stateroom	8520 AUD pp
DeLuxe Stateroom	9100 AUD pp
Prestige Stateroom - Deck 4	9580 AUD pp
Prestige Stateroom - Deck 5	9830 AUD pp
Prestige Stateroom - Deck 6	10090 AUD pp
Deluxe Suite	13220 AUD pp
Prestige Suite - Deck 5	14180 AUD pp
Prestige Suite - Deck 6	14570 AUD pp
Owner's suite	15230 AUD pp

ADDITIONAL CHARGES:

Port Charges. From 520 AUD pp

Wild Earth Travel

Small Ships, Big Adventures

0800 945 3327 (within New Zealand) | +64 (0) 3 365 1355 | 1800 107 715 (within Australia)

info@wildearth-travel.com | wildearth-travel.com



Wild Earth Travel

Small Ships, Big Adventures



wildearth-travel.com

info@wildearth-travel.com

PONANT BONUS - SAVE UP TO 30% ON PONANT SMALL SHIP CRUISES

Save up to 30% on Ponant Small Ship Cruises. Prices online do not show the discounted rates. Terms and Conditions apply, special offer is subject to availability, please contact us for more details.



Wild Earth Travel

Small Ships, Big Adventures

0800 945 3327 (within New Zealand) | +64 (0) 3 365 1355 | **1800 107 715** (within Australia)

info@wildearth-travel.com | wildearth-travel.com