



Wild Earth Travel

Small Ships, Big Adventures

wildearth-travel.com

info@wildearth-travel.com

TOTAL SOLAR ECLIPSE IN THE MEDITERRANEAN - FRANCE & SPAIN LUXURY CRUISE

This cruise, will cultivate the art of peaceful travel as well as a family spirit, thanks to its customised activities on board and on shore for youngsters, with the Kid Explorers Club.

On these summer days, take a journey towards the unexpected, experience the extraordinary and embark on an exceptional 9-day cruise , along Mediterranean shores, with their heady mix of savours, architectural styles and age-old traditions, to seek out a rare phenomenon offered by the sky : the total solar eclipse. Throughout your journey aboard *_Le Boréal_*, discover the secrets of this exceptional event thanks to the presence of Joe Rao , meteorologist and eclipse chaser, and Serge Brunier , science journalist, author, photographer and eclipse chaser.

Throughout your journey, you will benefit from an excursion included per person per port of call, to choose from a selection offered by PONANT. During this cruise, dive into the teeming waters of the wild Revellata peninsula at the gates of Calvi, explore the pretty villages of Gordes , Les Baux-de-Provence and Saint-Rémy-de-Provence leaving from Marseille or visit the Miro Foundation in Palma. The diversity of experiences on offer promises you intense and varied moments (to discover the full range of excursions, go to the itinerary tab).

From Nice , you will set sail for Calvi in the heart of the Balagne region. Between steep peaks and sublime beaches with turquoise waters, you will experience a wild and authentic Corsica. Your ship will set sail towards the southern tip of Corsica, to Bonifacio. A veritable fortress sculpted by the wind

and the spray, the "sentinel city" will reveal its historical centre and its long cobbled streets.

You will reach Marseille , the oldest port city in France, which is constantly renewing itself beneath the protective gaze of the Basilica of Our Lady of the Guard.

Le Boréal will sail to the Roussillon region, close to Spain. The charming fishing port of Port-Vendres will stand before you. Here, you will be bewitched by a unique blend of historic heritage and exceptional natural scenery, its backdrop the lush Albera Massif Mountain range running down towards the coast.

You will sail towards Barcelona. Truly an open-air museum, the "prodigious town" reveals an astonishing range of artistic treasures and museums, combining Roman ruins, medieval districts and a number of avant-garde elements from the 20th Century.

Further east, you will reach the Balearic Islands, which are anchored off the coast of the Spanish coastline and will be a highlight of your Mediterranean journey. After you have discovered the treasures of Palma de Mallorca , the Captain will take you -- in the total darkness of night and weather conditions permitting -- off the coast of the main Balearic Island, which is the best place to observe this rare phenomenon. You will be captivated by the unique spectacle provided by this 16th total eclipse of the 21st century, during which the Moon will obscure the Sun and reveal the solar corona.

Wild Earth Travel

Small Ships, Big Adventures

0800 945 3327 (within New Zealand) | +64 (0) 3 365 1355 | **1800 107 715** (within Australia)

info@wildearth-travel.com | **wildearth-travel.com**

Wild Earth Travel

Small Ships, Big Adventures

wildearth-travel.com

info@wildearth-travel.com

ITINERARY

Day 1 - Nice

Capital of the Cote d'Azur, Nice is surrounded by an amphitheatre of hills and mountains that protects it from the wind. You will probably want to explore the Promenade des Anglais, where you can sit on one of the famous blue chairs laid out opposite the baie des Anges. The Chateau hill is also a very pleasant place to walk. This is the entrance to the old city, with its bustling markets and regional products along the main street, the Cours Saleya.

Day 2 - Calvi, Corsica

Nestled on a rocky spur in the north-west of Corsica, the port of Calvi offers its whiteness between two sapphire-coloured bays. Capital of the Balagne region, the Genoese city benefits from an exceptional natural setting between the abrupt relief of the central chain, fertile hills and long sandy beaches. From the promontory of the Notre-Dame-de-la-Serra chapel, built in the 19th century on the ruins of a 15th century sanctuary, you will not miss the sublime panorama of the seaside, the mountains and the Calvi citadel. A little further west, you will have the opportunity to discover with the peninsula of Revelatta, a wilder and more preserved part of Corsica.

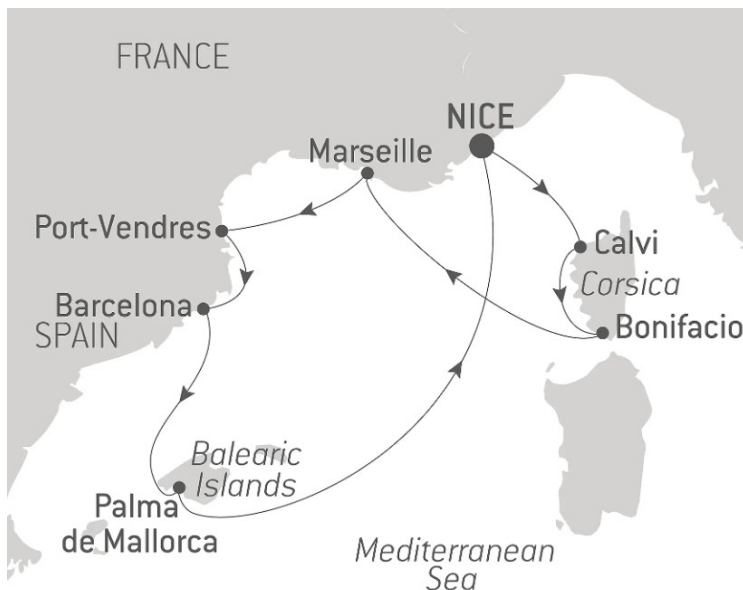
Day 3 - Bonifacio, Corsica

The spectacular town of Bonifacio located on the very tip of southern Corsica, clings to a narrow promontory of white rock overhanging the turquoise waters of the Mediterranean. You can admire its limestone cliffs hewn out by the wind, before setting off on a cultural tour of its cultural treasures. From the little paved streets in the ancient Haute Ville, to the promenade on the open-air medieval chemin de ronde, this stunning town will take you on a journey back in time. Frequented or secluded, there are numerous beaches to choose from, all in keeping with the high standards of the "Île de Beauté".

This cruise, a veritable invitation to dream big, to be within reach of immensity and to reconnect with pure magic, will conclude in Nice, famous for its interminable riviera.

_ for children aged 4 to 13 years old _

_ We are privileged guests in these places, where we are at the mercy of the weather conditions. As we cannot control the weather conditions, we cannot guarantee the observation of this total solar eclipse. Nevertheless, the Captain will have room for manoeuvre and will be able to sail towards the most suitable places on the eclipse's trajectory. _



rajectomy._

Wild Earth Travel

Small Ships, Big Adventures

0800 945 3327 (within New Zealand) | +64 (0) 3 365 1355 | **1800 107 715** (within Australia)

info@wildearth-travel.com | wildearth-travel.com



Wild Earth Travel

Small Ships, Big Adventures

wildearth-travel.com

info@wildearth-travel.com

Day 4 - Marseille

The oldest harbour in France, Marseille is the city where PONANT has chosen to set up its company headquarters. Heart vibrating in its setting of Mediterranean Calanques, it reveals its raw and authentic beauty, made up of a thousand influences and cultures which, over the centuries, have made up its wealth. A stroll through the Old Port will allow you to discover the places corresponding to the city founded by the Greeks as well as Notre-Dame-de-la-Garde Basilica, with its astonishing neo-Byzantine architecture, which overlooks it. Close to the quays, the Place de Lenche, which covers the ancient agora, will be perfect for a break in one of its lively cafes before melting into the maze of narrow streets with colourful houses in the Panier district, just a stone's throw away.

Day 5 - Port-Vendres

The coastal town of Port-Vendres stands proudly in the heart of the Roussillon region. In the curve of a sheltered bay, Port-Vendres offers a unique blend of historic heritage and exceptional natural scenery. The 17th-century fortifications, erected by Vauban, bear witness to its strategic importance to the defence of France. The coastal town's many charming features include its cobblestoned streets, edged with houses with colourful façades, which gracefully wind their way to the fishing port, where traditional boats mingle with luxury yachts. In the distance, the foothills of the Alberes tumble down to the coast, offering a green setting for this haven of peace where there is a harmonious blend of the hustle and bustle of the quays and the serenity of walks on the ramparts.

Day 6 - Barcelona

Located on the seashore between the mountains of Montjuic and Tibidabo, Barcelona offers its many visitors a perfect blend of tradition and modernism. Truly an open-air museum, the "prodigious town" reveals an astonishing range of artistic treasures and museums, combining Roman ruins, medieval districts and a number of avant-garde elements from the 20th Century. Over the years, it has been marked by some of the greatest artists, such as Picasso, Miro or

Gaudi, most of whose work has been listed as World Heritage Sites by UNESCO. Take the time to stroll along the Ramblas and enjoy the gentle, typically Mediterranean lifestyle of the capital of Catalonia.

Day 7 - Palma de Mallorca, Balearic Islands

Palma de Mallorca will reveal its many treasures: idyllic coves, majestic limestone cliffs that plunge into the clear sapphire- and turquoise-coloured waters of the Mediterranean, and vast plains planted with almond trees, olive trees and vineyards. When your ship calls at the capital of the Balearic Islands, take a walk to discover its emblematic monuments, such as its famous cathedral, and amble through its old streets. Here, like a painting, the island's historical heritage forms a backdrop to the lively and warm cosmopolitan atmosphere of the Mediterranean.

Day 8 - At sea

During your journey at sea, make the most of the many services and activities on board. Treat yourself to a moment of relaxation in the spa or stay in shape in the fitness centre. Depending on the season, let yourself be tempted by the swimming pool or a spot of sunbathing. This journey without a port of call will also be an opportunity to enjoy the conferences or shows proposed on board, depending on the activities offered, or to do some shopping in the boutique or to meet the PONANT photographers in their dedicated space. As for lovers of the open sea, they will be able to visit the ship's upper deck to admire the spectacle of the waves and perhaps be lucky enough to observe marine species. A truly enchanted interlude, combining comfort, rest and entertainment.

Day 9 - Nice

Capital of the Cote d'Azur, Nice is surrounded by an amphitheatre of hills and mountains that protects it from the wind. You will probably want to explore the Promenade des Anglais, where you can sit on one of the famous blue chairs

Wild Earth Travel

Small Ships, Big Adventures

0800 945 3327 (within New Zealand) | +64 (0) 3 365 1355 | **1800 107 715** (within Australia)

info@wildearth-travel.com | **wildearth-travel.com**



Wild Earth Travel

Small Ships, Big Adventures

wildearth-travel.com

info@wildearth-travel.com

laid out opposite the baie des Anges. The Chateau hill is also a very pleasant place to walk. This is the entrance to the old city, with its bustling markets and regional products along the main street, the Cours Saleya.

Please note:

Itineraries are subject to change.



0800 945 3327 (within New Zealand) | +64 (0) 3 365 1355 | **1800 107 715** (within Australia)

info@wildearth-travel.com | **wildearth-travel.com**



Wild Earth Travel

Small Ships, Big Adventures

wildearth-travel.com

info@wildearth-travel.com

YOUR SHIP: LE BOREAL

YOUR SHIP:	Le Boreal
VESSEL TYPE:	Luxury Expedition / Cruise Ship
LENGTH:	142 meters
	264 (in twin cabins, 200 in
PASSENGER CAPACITY:	Antarctica)
BUILT/REFURBISHED:	2011

A superb mega-yacht with 132 cabins, she is the fruit of the expertise of the Italian Fincantieri shipyard and French sophistication, as interpreted by designer Jean-Philippe Nuel. Le Boreal remains faithful to our philosophy - to create a unique atmosphere, a subtle blend of luxury, intimacy and well-being. Superior materials, discreet elegance and a tasteful decor combined with exterior and interior lines to reflect a nautical mood, subtly revisited. On board, soothing neutral tones are enlivened by splashes of red, our signature theme linking tradition and innovation to create personal touches in the spirit of a "private yacht".

Cuisine

Loyal to the great French tradition, the haute cuisine on board is worthy of the finest restaurants, where discreet, attentive service is the hallmark.

Our two restaurants welcome you for breakfasts, lunch and dinner. The Gastronomic Restaurant, with a capacity of 268 persons, is situated on Le Liberte Deck and serves you French and international cuisine accompagnied by fine wine. On the Grill Restaurant, you will have the opportunity to eat outside

and enjoy buffet lunch and themed dinner.

Life On Board

Whether you want to join other guests in the theatre or games area (Wii™ consoles, etc), or relax on your own in a quiet corner of the library, Le Boreal has been designed to meet the needs of every guest.

Everything has been done to preserve the independence of each guest to suit their personal tastes: lounges for lectures and shows, a spa in partnership with Carita™, but also more intimate spaces such as the library and internet corner. Comfortable cabins, nearly all with private balcony, are available for families either as triples or as communicating cabins. There is also a games area with Wii™ consoles, children's menus, and a baby-sitting service. Just as if you were on a private yacht, your time is your own to do as you please.

Fitted with the latest equipment (Kinesis Wall, running machine) and in partnership with the famous Carita™ brand, the Beauty Centre on Le Boreal welcomes you for some unforgettable moments of relaxation and pampering (beauty treatments, hairdresser, hammam, balneotherapy).

Wild Earth Travel

Small Ships, Big Adventures

0800 945 3327 (within New Zealand) | +64 (0) 3 365 1355 | **1800 107 715** (within Australia)

info@wildearth-travel.com | **wildearth-travel.com**



Wild Earth Travel

Small Ships, Big Adventures

wildearth-travel.com

info@wildearth-travel.com



eotherapy).

Wild Earth Travel

Small Ships, Big Adventures

0800 945 3327 (within New Zealand) | +64 (0) 3 365 1355 | **1800 107 715** (within Australia)

info@wildearth-travel.com | **wildearth-travel.com**

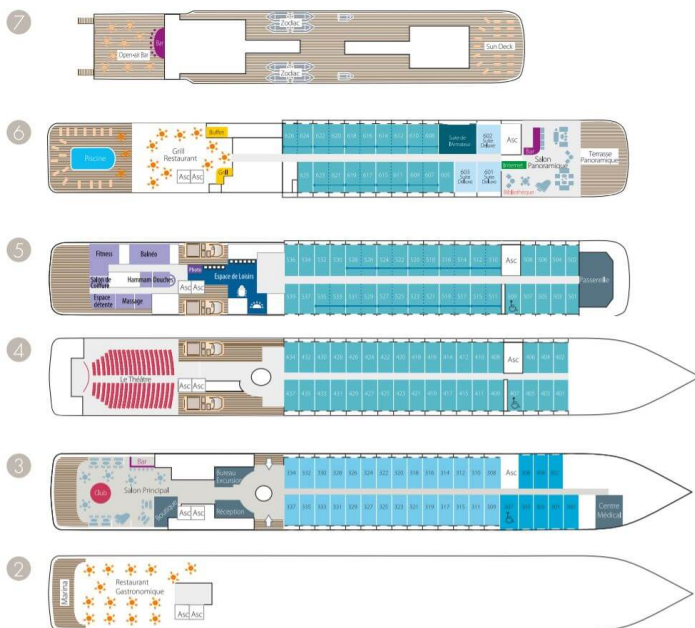
Wild Earth Travel

Small Ships, Big Adventures

wildearth-travel.com

info@wildearth-travel.com

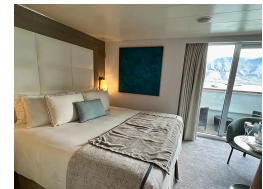
INSIDE YOUR SHIP



Deluxe Stateroom



Deluxe Suite



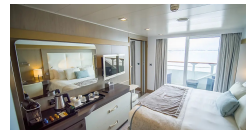
Prestige Deck 4



Prestige Deck 5



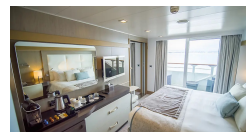
Prestige Deck 5 Suite



Prestige Deck 6



Prestige Deck 6 Suite



Superior Stateroom



Wild Earth Travel

Small Ships, Big Adventures

0800 945 3327 (within New Zealand) | +64 (0) 3 365 1355 | 1800 107 715 (within Australia)

info@wildearth-travel.com | wildearth-travel.com



Wild Earth Travel

Small Ships, Big Adventures

wildearth-travel.com

info@wildearth-travel.com

PRICING

06-Aug-2026 to 14-Aug-2026

Superior Stateroom	10780 AUD pp
Deluxe Stateroom	11370 AUD pp
Prestige Deck 4	11980 AUD pp
Prestige Deck 5	12590 AUD pp
Prestige Deck 6	13310 AUD pp
Deluxe Suite	21610 AUD pp
Prestige Deck 5 Suite	24010 AUD pp
Prestige Deck 6 Suite	24620 AUD pp

Wild Earth Travel

Small Ships, Big Adventures

0800 945 3327 (within New Zealand) | +64 (0) 3 365 1355 | **1800 107 715** (within Australia)

info@wildearth-travel.com | **wildearth-travel.com**



Wild Earth Travel

Small Ships, Big Adventures

wildearth-travel.com

info@wildearth-travel.com

SPECIAL OFFERS

Online prices reflect the current brochure fare savings of up to 30%. Prices may change based on demand. Terms and conditions apply. This special offer is subject to availability. Please contact us for more details.

Wild Earth Travel

Small Ships, Big Adventures

0800 945 3327 (within New Zealand) | +64 (0) 3 365 1355 | **1800 107 715** (within Australia)

info@wildearth-travel.com | **wildearth-travel.com**