



Wild Earth Travel

Small Ships, Big Adventures

wildearth-travel.com

info@wildearth-travel.com

TOTAL SOLAR ECLIPSE FROM ICELAND TO IRELAND IN LUXURY

From Reykjavik to Dublin, set off on a 9-cruise aboard *Le Lap erouse* to explore the magnificent landscapes of Iceland, the Faroe Islands and Scotland all the way to the Irish coastlines. In this wild world, facing completely unobstructed skies, you will seek out a rare phenomenon: the total solar eclipse, off the coast of Heimaey, on 12 August 2026, and discover its secrets thanks to the exceptional presence of the astronaut Jean-Fran çois Clervoy.

At each port of call on your trip, each guest will be able to choose one included excursion from the selection offered by PONANT. During this cruise, admire the panoramas provided by the Eldfell volcano from Heimaey, explore the wild landscapes of the Faroe Islands during a hike, or discover the treasures of the Shetland Islands from Lerwick. The range of experiences on offer promises a great time with lots of variety (for the full list of excursions, click on the Itinerary tab).

On the edge of the Arctic , Iceland offers up a simultaneously romantic and wild face. From Reykjavik , the world's northernmost capital, your ship will sail towards Heimaey. This is the only inhabited island in the Westman archipelago. An exceptional place composed of volcanoes and almost-desert landscapes, it is also a refuge for many colonies of birds, including gannets.

Along these mysterious shores, in the sudden darkness, the captain will take you, weather conditions permitting, in search of the best place to observe the total solar eclipse , the 16th of the

21st century. You will be captivated by the unique spectacle, during which the Moon will obscure the Sun.

You will then set a course for the Faroe Islands, Denmark's northernmost autonomous territory. In this isolated archipelago, you will immerse yourself in a wild and spectacular natural environment. In T orshavn, you will enjoy sailing around cliffs home to bird colonies. Here, the Viking legends and the Nordic cosmogony are never far away.

You will also discover Lerwick , the main port in the Shetland Islands. Nearby is the Jarlshof prehistoric and Norse settlement, where Neolithic people first settled more than 4,000 years ago - it is one of the most spectacular excavated sites in the British Isles.

In Portree , discover the Isle of Skye, a stronghold of Gaelic culture, and its stunning landscapes before heading to Dublin, disembarkation port. The Irish capital is known for its friendly atmosphere and authentic charm.

Wild Earth Travel

Small Ships, Big Adventures

0800 945 3327 (within New Zealand) | +64 (0) 3 365 1355 | **1800 107 715** (within Australia)

info@wildearth-travel.com | **wildearth-travel.com**

Wild Earth Travel

Small Ships, Big Adventures



wildearth-travel.com

info@wildearth-travel.com



formed by a submarine eruption that lasted from 1963 to 1967, off the Westman Islands to the south of Iceland. The island is a UNESCO World Heritage Site. To protect its virgin ecosystem against human presence, it is forbidden to land there. Only a few scientists have access to Surtsey to study the plant and animal colonisation of the island. Mosses, fungi and lichens were followed by vascular plants. Around 300 invertebrate species and 90 bird species have gradually colonised it. While sailing around Surtsey, you will enjoy a unique panorama of this extraordinary island's contours.

Day 2 - Heimaey, Vestmannaeyjar

This land seated off the southern coast of Iceland is the largest of the Vestmann islands, and is the only inhabited island in the archipelago. The steep Edfell volcanoes and the green prairies of Herjólfsdalur offer rich contrast of nature. On the Stórhöfði road, look out over grey sand beaches and cliffs carved out by the Arctic ocean. From here, you can also see the bronze landscapes of the mountaintops. You could visit Eldheimar, an ultra-modern and interactive museum which traces the volcanic eruption has experienced Heimaey in 1973.

Day 3 - Sun Eclipse Point 2026

In the Atlantic, facing completely unobstructed skies, the Captain will take you, weather conditions permitting, in search of the best place to observe the 16th total eclipse to occur in the 21st century. On board, admire the horizon plunge suddenly into darkness and enjoy this unique spectacle, during which the Moon will obscure the Sun.

Day 4 - At sea

During your journey at sea, make the most of the many services and activities on board. Treat yourself to a moment of relaxation in the spa or stay in shape in the fitness centre. Depending on the season, let yourself be tempted by the swimming pool or a spot of sunbathing. This journey without a port of call will also be an opportunity to enjoy the conferences or shows proposed on board, depending on the activities offered, or to do some shopping in the boutique or to meet the PONANT photographers in their dedicated space. As for lovers of the open sea, they will be able to visit the ship's upper deck to admire the spectacle of the waves and perhaps be lucky enough to observe marine species. A truly enchanted interlude, combining comfort, rest and

ntic charm.

ITINERARY

Day 1 - Reykjavík

Iceland's capital stretches along the edge of a vast bay in the west of the country. Perlan, the "Pearl of Reykjavik", a museum located on 'Oskjuhlíð hill, offers a panoramic view of the lush, green landscapes. A little further, one can easily spot the signpost showing the way to the evangelical Hallgrímskirkja church, and to the historical centre where one can stroll along the Skólavörðustígur and the Laugavegur, two lively streets with charming small shops. For some relaxation just outside of the city, visitors have the opportunity to visit the Reykjanes peninsula and its famous thermal lagoons of the Blue Lagoon.

Day 2 - Sailing around Surtsey Island

A small drop of basalt in the North Atlantic Ocean, Surtsey is a volcanic island

Wild Earth Travel

Small Ships, Big Adventures

0800 945 3327 (within New Zealand) | +64 (0) 3 365 1355 | 1800 107 715 (within Australia)

info@wildearth-travel.com | wildearth-travel.com

Wild Earth Travel

Small Ships, Big Adventures



wildearth-travel.com

info@wildearth-travel.com

entertainment.

Day 5 - Streymoy Island, Faroe Islands

Streymoy Island is the largest and most populated of the Faroe Islands, with 22,500 inhabitants. Lying between Scotland and Iceland, the 18-island Danish archipelago boasts natural wonders that will fascinate lovers of the great outdoors. Here, the hilly green landscapes stand in contrast with the huge basalt cliffs and the invigorating air shifts with the moods of the ocean. To the north, the small village of Saksun, with its traditional grass-covered rooftops, has 14 inhabitants. In the curve of a magnificent natural amphitheatre, it overlooks a fjord with a lagoon: an idyllic setting in a secluded and peaceful environment. To the west, in Vestmanna, myriad birds nest in the crags along the eroded and vertiginous cliff faces.

Day 6 - Lerwick, Shetland Islands

The small and charming capital of the Shetland Islands, with its sea front of old houses and narrow streets, offering travellers its old districts and a warm port atmosphere. Geopark Shetland, a UNESCO World Heritage Site, is located to the north. Incredibly well-preserved archaeological sites and ruins prove that the islands' occupation dates back to the first Neolithic colonies. The Shetland Museum and Archives recounts the Shetlands' history of heritage and culture: Lerwick's abundant waters were even fished by the Dutch in the past.

Day 7 - Portree, Isle of Skye

Nestling in the crux of a gorgeous bay, Portree reflects the magnificence of the grandiose Isle of Skye as well as being its main town. Apart from the charm of its colourful houses, the town's outstanding location on the banks of a loch makes it a very pleasant place to be. From its colourful harbour bustling with local craftsmen's shops, you can take in a stunning view of the surrounding hills. Before trekking through the wilderness and drinking in the natural beauty of the Isle of Skye, check out some of the beautiful images in the Aros Centre.

Day 8 - At sea

During your journey at sea, make the most of the many services and activities

on board. Treat yourself to a moment of relaxation in the spa or stay in shape in the fitness centre. Depending on the season, let yourself be tempted by the swimming pool or a spot of sunbathing. This journey without a port of call will also be an opportunity to enjoy the conferences or shows proposed on board, depending on the activities offered, or to do some shopping in the boutique or to meet the PONANT photographers in their dedicated space. As for lovers of the open sea, they will be able to visit the ship's upper deck to admire the spectacle of the waves and perhaps be lucky enough to observe marine species. A truly enchanted interlude, combining comfort, rest and entertainment.

Day 9 - Dublin

The Irish capital stretches along the banks of the Liffey to Dublin bay, on the East coast of Ireland. Discover Ireland's warm conviviality in the pedestrian district of Temple Bar. Its cobbled streets are brimming with fabulous shops, pubs and arts centres. Next to Trinity College, famous for its 18th century library, you can stroll along Grafton Street: in one of its famous tea shops, try a delicious scone and clotted cream served hot and melt-in-the-mouth with jam. Not far from here, the majestic O'Connell bridge leads you to the avenue with the same name, on which Spire, a luminous contemporary sculpture presides.

Please note:

Itineraries are subject to change.

Wild Earth Travel

Small Ships, Big Adventures

0800 945 3327 (within New Zealand) | +64 (0) 3 365 1355 | **1800 107 715** (within Australia)

info@wildearth-travel.com | **wildearth-travel.com**

Wild Earth Travel

Small Ships, Big Adventures



wildearth-travel.com

info@wildearth-travel.com

YOUR SHIP: LE LAPEROUSE

YOUR SHIP:	Le Laperouse
VESSEL TYPE:	Luxury
LENGTH:	127 metres
PASSENGER CAPACITY:	92 cabins
BUILT/REFURBISHED:	2017/2018

Featuring innovative and environmentally-friendly equipment, elegantly designed cabins, spacious suites with large windows, and lounge areas that open onto the outside, this new limited-capacity yacht boasting just 92 cabins and suites will offer you a truly unique cruising experience.

Aboard this ship that flies the French flag, you will experience the incomparable pleasure of an intimate cruise, with the possibility of exploring an ever-increasing range of destinations in an ethnic-chic ambiance with luxury service.

Experience a luxurious setting where the accent is on authenticity and passion for travel.

RESTAURANTS

As it is an essential part of French culture, gastronomy will naturally have pride of place aboard this new ship. Through its two restaurants, Le Laperouse will invite you on a journey to elegance and epicureanism.

In a relaxed atmosphere, a first dining area located on Deck 3 and able to seat 70 will serve grilled meats daily, along with a variety of salads and desserts.

To the back of Deck 4, you will find a 260 m² panoramic restaurant which can accommodate all of our passengers in a

single sitting. Designed differently to that on our other ships, this dining area, which opens onto the outside, will have a buffet of salads, desserts and cheeses at your disposal. Our discreet and attentive crew will provide table service for hot meals.

PUBLIC AREAS

Like Le Boreal and its sisterships, Le Laperouse has many common areas that are designed and equipped to meet all of your needs while preserving the intimacy of each passenger.

A 140 m² reception area includes: A reception/concierge desk, An excursions desk, The ship's administrative services, The sales office, manned by our Guest Relations Officer, Our 50 m² boutique which sells clothing, jewellery, beauty products, postcards and various accessories, Toilets accessible to passengers with reduced mobility.

A new hydraulic platform with adjustable height provides: Easier boarding than on any other cruise ship, Easier Zodiac embarkation and disembarkation for expeditions, Easier access to the sea for swimming and practising various water sports such as kayaking or paddle-boarding.

A pool deck offering: A pool with a panoramic view, equipped with a counter-current swimming system, A pleasant solarium, An outdoor bar and lounge with armchairs and sofas.

A 200 m² main lounge which can accommodate all of our passengers to share convivial moments and to host activities organised during the day or evening.

Lastly, a theatre that seats 188, equipped with: The latest sound and lighting technology, A LED wall as the stage backdrop, for the projection of high-resolution images and videos.

Wild Earth Travel

Small Ships, Big Adventures

0800 945 3327 (within New Zealand) | +64 (0) 3 365 1355 | **1800 107 715** (within Australia)

info@wildearth-travel.com | **wildearth-travel.com**



Wild Earth Travel

Small Ships, Big Adventures



wildearth-travel.com

info@wildearth-travel.com



and videos.



Wild Earth Travel

Small Ships, Big Adventures

0800 945 3327 (within New Zealand) | +64 (0) 3 365 1355 | **1800 107 715** (within Australia)

info@wildearth-travel.com | **wildearth-travel.com**

Wild Earth Travel

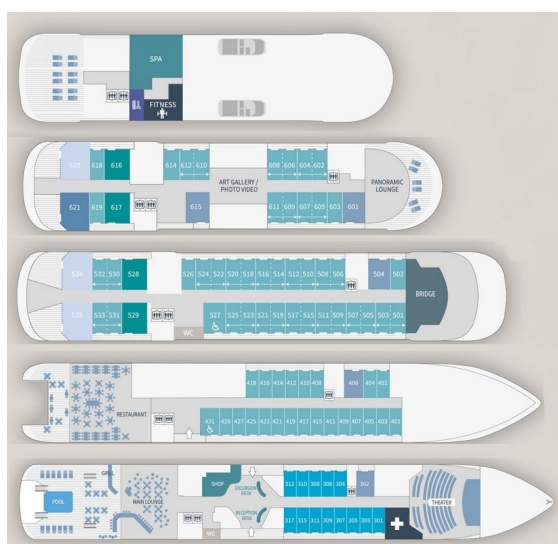
Small Ships, Big Adventures



wildearth-travel.com

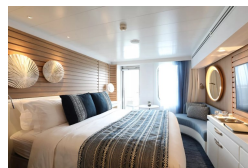
info@wildearth-travel.com

INSIDE YOUR SHIP

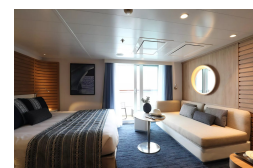


- Owner's Suite Deck 6
- Privilege Suites Deck 5-6
- Grand Deluxe Suites Deck 5-6
- Prestige Suites Deck 5-6
- Deluxe Suites Deck 5-6
- Prestige Cabins Deck 4-5-6
- Deluxe Cabins Deck 3

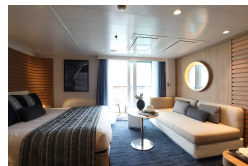
Deluxe Stateroom



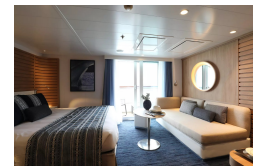
Deluxe Suite Deck 3



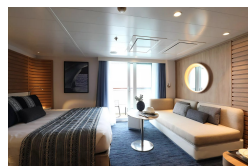
Deluxe Suite Deck 4



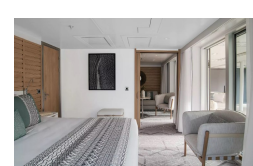
Deluxe Suite Deck 5



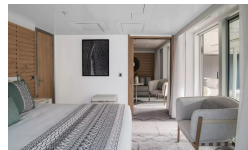
Deluxe Suite Deck 6



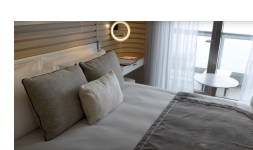
Grand Deluxe Suite Deck 5



Grand Deluxe Suite Deck 6



Prestige Deck 4



Wild Earth Travel
Small Ships, Big Adventures

0800 945 3327 (within New Zealand) | +64 (0) 3 365 1355 | 1800 107 715 (within Australia)

info@wildearth-travel.com | wildearth-travel.com

Wild Earth Travel

Small Ships, Big Adventures

wildearth-travel.com

info@wildearth-travel.com

PRICING

10-Aug-2026 to 18-Aug-2026

Deluxe Stateroom	11550 AUD pp
Prestige Deck 4	12830 AUD pp
Prestige Deck 5	13470 AUD pp
Prestige Deck 6	14240 AUD pp
Deluxe Suite Deck 3	19850 AUD pp
Deluxe Suite Deck 5	19850 AUD pp
Deluxe Suite Deck 6	19850 AUD pp
Deluxe Suite Deck 4	19850 AUD pp
Prestige Deck 5 Suite	26870 AUD pp
Prestige Deck 6 Suite	28280 AUD pp
Privilege Suite Deck 5	29680 AUD pp
Privilege Suite Deck 6	29680 AUD pp
Grand Deluxe Suite Deck 6	32630 AUD pp
Grand Deluxe Suite Deck 5	32630 AUD pp

Wild Earth Travel

Small Ships, Big Adventures

0800 945 3327 (within New Zealand) | +64 (0) 3 365 1355 | **1800 107 715** (within Australia)

info@wildearth-travel.com | **wildearth-travel.com**



Wild Earth Travel

Small Ships, Big Adventures



wildearth-travel.com

info@wildearth-travel.com

SPECIAL OFFERS

Online prices reflect the current brochure fare savings of up to 30%. Prices may change based on demand. Terms and conditions apply. This special offer is subject to availability. Please contact us for more details.



Wild Earth Travel

Small Ships, Big Adventures

0800 945 3327 (within New Zealand) | +64 (0) 3 365 1355 | **1800 107 715** (within Australia)

info@wildearth-travel.com | **wildearth-travel.com**