

Wild Earth Travel

Small Ships, Big Adventures

wildearth-travel.com

info@wildearth-travel.com

THROUGH THE AEGEAN - GREEK ISLANDS SAILING CRUISE FROM ATHENS

Embark on a captivating journey through Greece, starting and ending in Athens. Sail through the Peloponnese and the Cyclades, exploring the ancient fortress town of Monemvasia, and the lesser-known, picturesque islands of Milos and Paros. Experience the unique charm of small harbor towns and enjoy ample time for shore excursions. The itinerary also includes a visit to the exclusive, car-free island of Spetses, offering a blend of rich history, serene beauty, and sunny days under full sails.

Some departures may have slightly modified itineraries. Please confirm the itinerary with an Expedition Specialist.



ITINERARY

Day 1 Athens (Piraeus), Greece

Departure 7:00 pm

"A ship will come...", declared the singer Melina Mercouri to the port of Piraeus. Later, as Greek Minister for Culture, she made Athens the first European Capital of Culture in 1985. The city is considered the birthplace of Europe, of philosophy and of democracy, and is the embodiment of the Olympic ideal. World-famous and a UNESCO World Heritage Site since 1987, its landmark is the magnificent Parthenon temple, lying high up on the

Wild Earth Travel

Small Ships, Big Adventures

0800 945 3327 (within New Zealand) | +64 (0) 3 365 1355 | **1800 107 715** (within Australia)

info@wildearth-travel.com | **wildearth-travel.com**



Wild Earth Travel

Small Ships, Big Adventures

wildearth-travel.com

info@wildearth-travel.com

Acropolis in all its glory. At the foot of the Acropolis hill is the Plaka, the oldest quarter of Athens, and the world's most modern archaeological museum, the new Acropolis Museum, has been here since 2009.

Day 2 Day under full sails

Climbing the rigging, untying ropes, setting sails - today is all about sailing. Time to lean back and relax in the deck chair and watch the passionate crew hoisting the sails by hand.

Day 3 Nauplio, Peloponnese

Arrival 8:00 am, Departure 7:00 pm

The old town of Nauplio has a picturesque peninsula setting and three Venetian fortresses guard the pretty town. In ancient times, the excavation site of Mycenae, a UNESCO World Heritage Site, was one of the most important towns in Greece. Its legendary king, Agamemnon, has a large role in Homer's Iliad. The palace grounds were surrounded by a cyclopean stone wall. Now you can only gain entrance through the famous Lion Gate. In Epidaurus, also protected by UNESCO, the impressive 14,000-seat theatre is one of the most important buildings in this archaeological site.

Day 4 Monemvasia, Peloponnese

Arrival 8:00 am, Departure 1:30 pm

The little town of Monemvasia nestles closely against a rock that lies just off the coast. This impregnable fortress was an important trading center in Byzantine times. Today it is a retreat for wealthy Athenians who spend their weekends here. Behind its walls you can discover the beautifully restored lower town, where you simply want to drift along the tranquil narrow lanes. This picturesque little town on a rock transports you back in time to the romantic Middle Ages, when it was exceptionally modern and lively.

Day 5 Milos, Cyclades

Arrival 8:00 am, Departure 1:30 pm

The unique character of Milos' landscape was formed by volcanic activity. Hot springs, spectacular cliffs and distinctive rock formations give the various beaches their own individual character. The colors of Milos are most obvious where the water meets the stone and forms the coastline. Minerals have colored the sand and stones and each rock along the coastline seems to glow in a different color. Plaka, the picturesque old capital with its typical dazzling-white houses, is overlooked by a mighty castle which offers a superb view over Adamos Bay and the surrounding islands.

Day 6 Paros, Cyclades

Arrival 8:00 am, Departure 1:30 pm

Are we on Mykonos? Whitewashed facades, blue windows, and doors that sparkle with the pink blossoms of the bougainvillea - with its Aegean postcard idyll, Paros is reminiscent of its famous Cycladic sister at first glance. A second glance, however, quickly reveals the differences: no crowds, no over-the-top party scene - Paros relies on gentle tourism and has therefore been able to retain much of its original charm. Besides the pretty main towns of Parikia and Naoussa and the fabulous island beaches, the wild hinterland with its traditional villages and monasteries is also worth a trip.

Day 7 Spetses, Saronic Islands

Arrival 8:00 am, Departure 1:30 pm

Exclusive, noble, traditional: Far away from mass tourism, a small, relaxed island with beautiful patrician houses basks in the turquoise waters of the Aegean Sea. Wealthy Athenians like to spend their vacation days on Spetses - and this evident on the well-kept Saronic Island. Lush flower gardens adorn the historic shipping villas, chic cafes line the old harbor, and horse-drawn carriages roll by with aristocratic elegance on the car-free streets. On Spetses, it's worth taking a look down: Here, colorful pebble mosaics adorn the streets, and many a visitor gets a kick out of finding the prettiest one.

Day 8 Athens (Piraeus), Greece

Wild Earth Travel

Small Ships, Big Adventures

0800 945 3327 (within New Zealand) | +64 (0) 3 365 1355 | **1800 107 715** (within Australia)

info@wildearth-travel.com | **wildearth-travel.com**



Wild Earth Travel

Small Ships, Big Adventures

wildearth-travel.com

info@wildearth-travel.com

Arrival 6:00 am

"A ship will come...", declared the singer Melina Mercouri to the port of Piraeus. Later, as Greek Minister for Culture, she made Athens the first European Capital of Culture in 1985. The city is considered the birthplace of Europe, of philosophy and of democracy, and is the embodiment of the Olympic ideal. World-famous and a UNESCO World Heritage Site since 1987, its landmark is the magnificent Parthenon temple, lying high up on the Acropolis in all its glory. At the foot of the Acropolis hill is the Plaka, the oldest quarter of Athens, and the world's most modern archaeological museum, the new Acropolis Museum, has been here since 2009.

Please note:

Itineraries are subject to change.

Wild Earth Travel

Small Ships, Big Adventures

0800 945 3327 (within New Zealand) | +64 (0) 3 365 1355 | **1800 107 715** (within Australia)

info@wildearth-travel.com | **wildearth-travel.com**

Wild Earth Travel

Small Ships, Big Adventures

wildearth-travel.com

info@wildearth-travel.com

YOUR SHIP: SEA CLOUD II

YOUR SHIP:	Sea Cloud II
VESSEL TYPE:	Tall Ship (Sailing)
LENGTH:	105 metres
PASSENGER CAPACITY:	88
BUILT/REFURBISHED:	2001

Sea Cloud II is a romantic tall ship that masterfully blends the elegance of classic sailing with the comfort and convenience of modern luxury. Inspired by her legendary predecessor from the 1930s, this three-masted barque is fitted with 23 sails and is hand-sailed whenever possible, adding a sense of theatre and tradition to every voyage. With 44 cabins accommodating just 88 guests, the atmosphere aboard remains intimate and relaxed, while the interiors evoke the charm of a bygone era--polished wood, sweeping staircases, and vintage nautical style--all paired with the contemporary standards of a premium expedition ship.

Guests aboard Sea Cloud II enjoy spacious decks for sun-soaked sailing days, al fresco dining on the Lido Deck, and a wellness area featuring a sauna, massage therapy, and fitness facilities. The ship's welcoming indoor spaces include an elegant dining room and a comfortable lounge for evening Recaps hosted by expert field staff such as historians and photo instructors. Meals focus on locally sourced ingredients and regional cuisine, served in an informal yet refined setting. With an open Bridge policy and wide, accessible passageways, Sea Cloud II invites guests not just to relax, but to immerse

themselves fully in the experience of life under sail.



under sail.

Wild Earth Travel

Small Ships, Big Adventures

0800 945 3327 (within New Zealand) | +64 (0) 3 365 1355 | **1800 107 715** (within Australia)

info@wildearth-travel.com | **wildearth-travel.com**

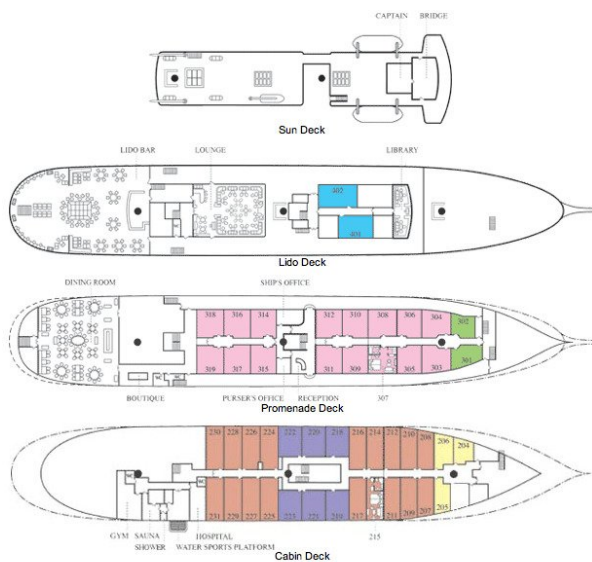
Wild Earth Travel

Small Ships, Big Adventures

wildearth-travel.com

info@wildearth-travel.com

INSIDE YOUR SHIP



Please note that category F cabins have one lower and one upper berth bed

Key
 Cat A Cat B Cat C
 Cat D Cat E Cat F

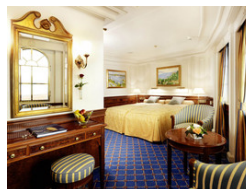
Category A. From



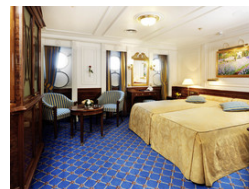
Category B. From



Category C. From



Category D. From



Category E. From



Category F Upper/Lower Beds. From



Wild Earth Travel

Small Ships, Big Adventures

0800 945 3327 (within New Zealand) | +64 (0) 3 365 1355 | 1800 107 715 (within Australia)

info@wildearth-travel.com | wildearth-travel.com

Wild Earth Travel

Small Ships, Big Adventures

wildearth-travel.com

info@wildearth-travel.com

PRICING

15-Jul-2025 to 22-Jul-2025

GTY Double Cabin. From	4355 EUR pp
Category F Upper/Lower Beds. From	4745 EUR pp
Category E. From	5485 EUR pp
Category D. From	6095 EUR pp
Category C. From	6445 EUR pp
Category B. From	7595 EUR pp
Category A. From	8445 EUR pp

22-Jul-2025 to 29-Jul-2025

GTY Double Cabin. From	4355 EUR pp
Category F Upper/Lower Beds. From	4745 EUR pp
Category E. From	5485 EUR pp
Category D. From	6095 EUR pp
Category C. From	6445 EUR pp
Category B. From	7595 EUR pp
Category A. From	8445 EUR pp

16-Aug-2025 to 23-Aug-2025

GTY Double Cabin. From	4355 EUR pp
Category F Upper/Lower Beds. From	4745 EUR pp
Category E. From	5485 EUR pp
Category D. From	6095 EUR pp
Category C. From	6445 EUR pp
Category B. From	7595 EUR pp
Category A. From	8445 EUR pp

30-Aug-2025 to 06-Sep-2025

GTY Double Cabin. From	4355 EUR pp
Category F Upper/Lower Beds. From	4745 EUR pp
Category E. From	5485 EUR pp
Category D. From	6095 EUR pp
Category C. From	6445 EUR pp
Category B. From	7595 EUR pp
Category A. From	8445 EUR pp

17-Jul-2026 to 24-Jul-2026

Category F Upper/Lower Beds. From	4930 EUR pp
Category E. From	5690 EUR pp
Category D. From	6640 EUR pp
Category C. From	6830 EUR pp
Category B. From	7590 EUR pp
Category A. From	8730 EUR pp



Wild Earth Travel

Small Ships, Big Adventures

wildearth-travel.com

info@wildearth-travel.com

PRICING

24-Jul-2026 to 31-Jul-2026

Category F Upper/Lower Beds. From	4930 EUR pp
Category E. From	5690 EUR pp
Category D. From	6640 EUR pp
Category C. From	6830 EUR pp
Category B. From	7590 EUR pp
Category A. From	8730 EUR pp

31-Jul-2026 to 07-Aug-2026

Category F Upper/Lower Beds. From	4930 EUR pp
Category E. From	5690 EUR pp
Category D. From	6640 EUR pp
Category C. From	6830 EUR pp
Category B. From	7590 EUR pp
Category A. From	8730 EUR pp



Wild Earth Travel
Small Ships, Big Adventures

0800 945 3327 (within New Zealand) | +64 (0) 3 365 1355 | **1800 107 715** (within Australia)

info@wildearth-travel.com | **wildearth-travel.com**