



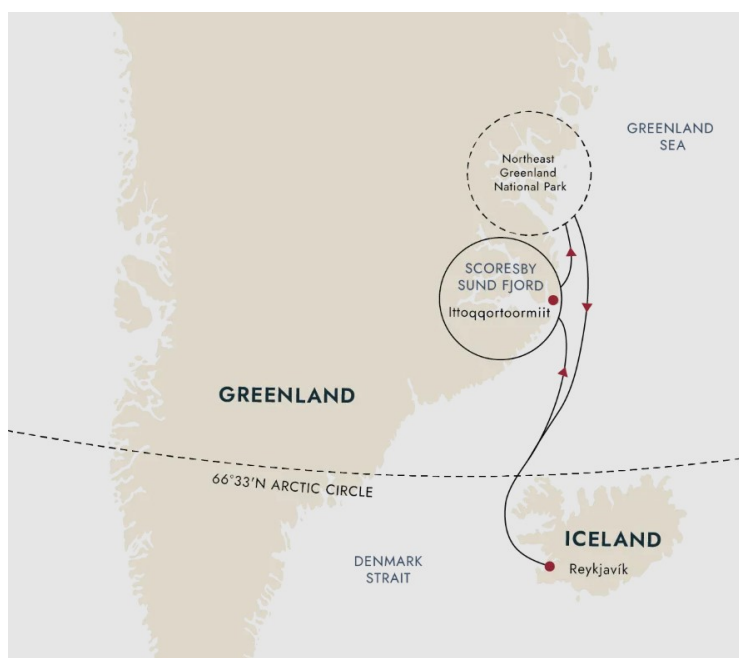
THE ULTIMATE FJORD AND NATIONAL PARK - GREENLAND EXPEDITION

Epic grandeur of Scoresby Sund fjord system

Scoresby Sund is an immense system of fjords and glaciers that fans out over 24,000 square miles. You'll witness majestic fjord seascapes, stunningly beautiful icebergs, abundant Arctic wildlife and perhaps even visit one of the most remote communities on the planet.

The largest national park in the world

Northeast Greenland National Park is gigantic natural reserve of 375,000 square miles occupying the remote northeastern quarter of Greenland. In the absence of people, wildlife abounds and with some luck you might see iconic Arctic species like musk oxen and even polar bears.



ITINERARY

DAY 1 Cosmopolitan Reykjavík

Explore the world's northernmost capital

Your adventure begins in Reykjavik.

A laid-back city of art, culture and history, delightful Reykjavik is well worth spending some time getting to know.

Take a stroll along Laugavegur with its boutiques and outdoor shops, gaze in awe at the striking Hallgrímskirkja Church, and drop in on the fascinating



Reykjavik Art Museum.

If you have the time, we recommend booking a Pre-Programme with us and discovering some of Iceland's natural highlights before your cruise begins.

DAY 2 Relaxing at sea

Getting ready for Greenland

As we sail into the Greenland Sea on our way to the world's largest island, it's time to relax, find your sea legs and get acquainted with the onboard facilities.

The Expedition Team will give talks about your upcoming adventure and will explain the protocols of respectfully visiting wildlife habitats and Indigenous Arctic communities. In the lecture hall, you'll find out what to expect in the epic landscapes of East Greenland National Park and the stunning fjords of Scoresby Sund.

If you're feeling active, head to the gym and do a workout with a view. On the other hand, you could sample the sauna, laze in a hot tub, indulge yourself at the onboard eateries or just find a quiet corner to read a book with a hot drink. Love science? Then why not join one of our onboard Citizen Science projects, a fun and engaging way to contribute to global research.

DAY 3-10 Northeast Greenland National Park and Scoresby Sund expedition days

Explore the wild east

We'll spend the next 10 days exploring Greenland's remote and pristine east coast. Extending for over 1,740 miles from north to south, this long stretch of coast is cold, isolated, and remote even by Greenlandic standards. The south-flowing East Greenland Current brings lots of sea ice directly from the Arctic Ocean, challenging human settlement but creating a heaven for ice-dependant wildlife, including the polar bear.

Local weather and ice conditions will dictate our exact route, but our plan is to

sail first to Scoresby Sund, the world's largest fjord system. You'll feel a deep sense of serenity in this wild and rugged region, with white and blue icebergs floating in mirror-like waters surrounded by looming mountains. If conditions permit, we'll visit Ittoqqortoormiit - the most remote inhabited community in the Western Hemisphere.

Should the sea ice be favourable, we'll continue our journey north to the beautiful Northeast Greenland National Park - the world's largest national park. Visiting this fragile Arctic wilderness is a rare privilege as only a few visitors are permitted here each year.

Apart from old trapper huts, some science research stations, and a military outpost, there are very few traces of human life in this 375,000 square mile park. Be assured that this is one of the quietest places on Earth, and you'll enjoy a feeling of great peace as we explore this beautiful wilderness.

As this is an expedition cruise, the Captain and Expedition Team will guide us to the most favourable spots on a daily basis. Our goal will be to pack in as many shore landings, small boat cruises, nature walks, kayaking adventures and wildlife sightings as possible.

DAY 11-12 Denmark Strait

Heading back to Iceland

After exploring the remote beauty of Greenland, we set our course back for Iceland. Spend the days at sea recapping your experiences with new friends, studying nature in the Science Center, listening to a lecture or two, or just relaxing on deck. Look out for the seabirds that follow our ship and keep an eye out for whales.

As you reflect on your cruise, from witnessing the delicate ecology of the fjord systems to the ethereal elegance of the floating ice, east Greenland's beauty is sure to have left its mark on you.

DAY 13 Reykjavik

End of the expedition



Wild Earth Travel

Small Ships, Big Adventures

We say a fond farewell to MS Spitsbergen as we end our expedition cruise in the lovely city of Reykjavik. With its interesting museums, stylish galleries, restaurants and geothermal pools, there's so much to enjoy in Iceland's capital.

And if you want to discover more of Iceland, you can join our optional Post-Programme before you head home. Or simply extend your stay to enjoy more of Reykjavik and its surrounding geothermal attractions. It's a great place to end an epic journey!

Please Note:

As we explore these remote and captivating areas in a safe way, our adventure will ultimately be guided by nature. If weather, sea or ice conditions do not allow our planned navigation, our experienced crew will deliver an adapted itinerary. Flexibility and our deep knowledge of the area combine to give you an amazing exploration experience.



Wild Earth Travel

Small Ships, Big Adventures

wildearth-travel.com

info@wildearth-travel.com

YOUR SHIP: SPITSBERGEN

YOUR SHIP:	Spitsbergen
VESSEL TYPE:	Expedition
LENGTH:	100 metres
PASSENGER CAPACITY:	335
BUILT/REFURBISHED:	2009 / 2016

MS Spitsbergen is named after the crown jewel of Arctic Norway - the Svalbard archipelago and its biggest island, Spitsbergen. After complete reconstruction, MS Spitsbergen joined the Hurtigruten fleet in 2016. The ship features high technical standards as well as comfortable, modern public areas and cabins. The vessel's fresh Scandinavian design reflects a colour palette derived from the sea. She is modern and environmentally progressive, and we plan further improvements that will reduce emissions and fuel consumption even more. The new ship's maneuverability and optimal size make her quite suitable for exploring polar waters.

Expedition team on board

MS Spitsbergen has its own on-board Expedition Team and serves as a university at sea. Interesting lectures inside the ship as well as out on the sun deck make this an exciting and educational journey. Topics depend on the season and the waters we sail in. The Expedition Team host a lecture programme and evening gatherings daily. Out on deck you can participate in live points of interest to learn more about the nature, culture and other phenomena we encounter along the coast. In addition, the Expedition Team will introduce you to the

uniquely Norwegian notion of `friluftsliv` (outdoor life), and encourage you take part in `friluftsliv` hikes and activities during the journey.

Our dedicated Expedition Teams have one mission: to enhance your experience by engaging you and interpreting the nature, wildlife, and culture you encounter during the voyage. Read more about our Expedition Teams here.

Ship facilities

Expedition Team - Explorer bar - Panoramic lounge - Explorer lounge - Compass Service Centre - Brygga bistro - Shop - Torget main dining - Wi-Fi - Sauna - Fitness room - Lift - Hot tub - Guest launderette - Panoramic deck 8 - Outside bar for events, decks 7 & 8



decks 7 & 8

Wild Earth Travel
Small Ships, Big Adventures

0800 945 3327 (within New Zealand) | +64 (0) 3 365 1355 | **1800 107 715** (within Australia)

info@wildearth-travel.com | wildearth-travel.com

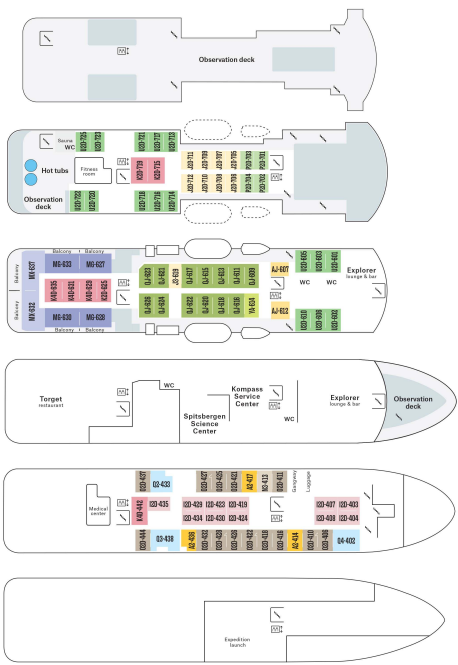


Wild Earth Travel
Small Ships, Big Adventures

wildearth-travel.com

info@wildearth-travel.com

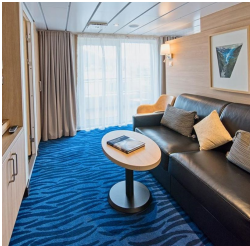
INSIDE YOUR SHIP



Arctic Superior. From



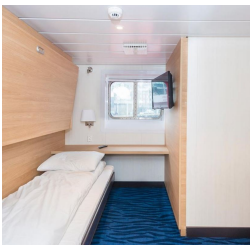
Expedition Suite. From



Polar Inside. From



Polar Outside. From





PRICING

20-Aug-2025 to 01-Sep-2025

Polar Inside. From	10524 AUD pp
Polar Outside. From	12314 AUD pp
Arctic Superior. From	13682 AUD pp
Expedition Suite. From	17892 AUD pp

10-Sep-2025 to 22-Sep-2025

Polar Inside. From	10215 AUD pp
Polar Outside. From	11951 AUD pp
Arctic Superior. From	13279 AUD pp
Expedition Suite. From	17365 AUD pp

19-Aug-2026 to 31-Aug-2026

Polar Inside. From	12710 AUD pp
Polar Outside. From	14871 AUD pp
Arctic Superior. From	16523 AUD pp
Expedition Suite. From	21607 AUD pp

09-Sep-2026 to 21-Sep-2026

Polar Inside. From	12380 AUD pp
Polar Outside. From	14484 AUD pp
Arctic Superior. From	16093 AUD pp
Expedition Suite. From	21045 AUD pp