

Wild Earth Travel

Small Ships, Big Adventures

wildearth-travel.com

info@wildearth-travel.com

THE LOUISIADES, SOLOMONS & VANUATU - FROM CAIRNS TO PORT VILA CRUISE

Join us onboard Coral Adventurer, for our long-awaited return to the remarkable Melanesian Islands on this voyage through Papua New Guinea, the hidden Solomons and Vanuatu. Discover idyllic tropical island outposts such as the Laughlan Islands, Tetepare and Panasia Island. Visit sacred Skull Island in the spectacular Vonavona Lagoon and learn about slain warriors and headhunting traditions. Share ancient "kastom" such as the Rom Dancers of Ambrym and witness islanders living a traditional subsistence lifestyle, little changed for centuries. Focus on the fascinating anthropological history of the islands and how the Austronesian and Papuan people have inhabited the region through the centuries encountering early explorers and sea traders to the dramatic conflicts of World War II. Enjoy adventure-filled days surrounded by natural wonders as we explore the 'blue holes' of Espiritu Santo, view active volcanoes, snorkel and dive on vibrant reef systems and encounter unique wildlife.



ITINERARY

DAY 1: DEPART CAIRNS, AUSTRALIA

Arrive at Trinity Wharf (berth to be advised) at 7:30am, where there is time to settle into your stateroom before our 9:00am departure.

Take the time to become acquainted with all the facilities onboard Coral Adventurer. There will be morning tea available upon boarding before we cruise out to the Coral Sea towards Papua New Guinea. Your crew will gather you in the Bridge Deck lounge for a safety briefing, snorkelling briefings, and presentations by lecturers and expedition staff. As dusk falls, mingle with your fellow travellers, the Captain and crew for the Captain's Welcome Drinks.

CORAL SEA

Today we spend a relaxing day traversing the Coral Sea with presentations by

Wild Earth Travel

Small Ships, Big Adventures

0800 945 3327 (within New Zealand) | +64 (0) 3 365 1355 | **1800 107 715** (within Australia)

info@wildearth-travel.com | wildearth-travel.com

Wild Earth Travel

Small Ships, Big Adventures



wildearth-travel.com

info@wildearth-travel.com

our expert Guest Lecturers. Explore our extensive onboard library and spend the day with a selection of games or simply gaze over the seas.

The Coral Sea has historical significance due to the Battle of the Coral Sea during World War II where Allied forces successfully halted the Japanese advance in the Pacific. It was a pivotal moment in naval warfare.

SAMARAI ISLAND, PAPUA NEW GUINEA

Samarai Island is the former administrative capital of Milne Bay Province. Once a bustling trading port, Samarai boasts a storied past as the second-largest town in the Territory of Papua, thriving until the devastation of World War II. Guests will be welcomed with a Sing Sing, and there will be a chance to purchase handicrafts and pearls from locals or go for a snorkel at nearby Ebuma Island. As a National Historical Heritage Island, guests can stroll through remnants of its vibrant history, offering a poignant glimpse into a bygone era amidst its landscapes and shores.

TWO DAYS IN THE LOUISIAD ARCHIPELAGO - PANASIA, PAPUA NEW GUINEA

Visit Panapompom Island and learn about the lifestyle on these far-flung islands, before venturing into Deboyne Lagoon to snorkel over the World War II wreck of a Japanese 'Zero' fighter plane. Learn about the local culture before snorkelling or diving at remote reefs.

Discover the rugged beauty of the Calvados Islands, a chain of atolls characterised by their limestone karsts. These "Jurassic-like" formations stand, guarding the secrets of the archipelago's ancient past. In the evenings, relax with beachside drinks on idyllic islands, explore sea caves, and unwind at Pania Island, home to one of Papua New Guinea's most stunning beaches.

LAUGHLAN ISLANDS (BUDIDUNA), PAPUA NEW GUINEA

Laughlan Islanders specialise in canoe building and in this remote corner of the world we find seagoing canoes under construction. Interact with the friendly villagers of Budiduna who share their lifestyle of gardening, fishing, and Kula ring trading. Later, snorkel or dive on the outer reef, where we may see turtles, wrasse, and spinner dolphins in the warm, clear waters.

GIZO & NJARI REEF, SOLOMON ISLANDS

This morning our first Solomons landfall is the town of Gizo. Wander through Gizo's open-air markets, which showcase a bounty of tropical fruits and fresh fish, as well as crafts by the region's legendary wood and stone carvers. In the afternoon, we cruise past Kennedy Island before enjoying water activities at Njari Reef. Njari Reef is a merge point for oceanic currents and is said to have one of the highest fish counts in the world. Experience the remarkable snorkelling opportunities offering an unforgettable experience.

VONAVONA LAGOON, SOLOMON ISLANDS

After clearing into the Solomon Islands, we head to Vonavona Lagoon, a large lagoon located in the New Georgia Islands of the Western Province. Teeming with colourful fish and hundreds of islets, the lagoon offers opportunities for snorkelling and scenic cruising. Guests will have a chance to visit Skull Island - a small island that is home to a shrine of some 50 male "trophy" skulls. The skulls found on this island span from 300 to 1,000 years old. Later in the day, enjoy guided jungle walks on Lola Island.

TETEPARE, SOLOMON ISLANDS

We visit Tetepare, a rugged and mysterious island abandoned 150 years ago, now protected by a unique conservation project run by the Tetepare Descendants Association. Tetepare has received international recognition for its conservation and archaeological significance. A vast array of plants and animals make their home on the island - it supports nesting populations of

Wild Earth Travel

Small Ships, Big Adventures

0800 945 3327 (within New Zealand) | +64 (0) 3 365 1355 | **1800 107 715** (within Australia)

info@wildearth-travel.com | **wildearth-travel.com**

Wild Earth Travel

Small Ships, Big Adventures

wildearth-travel.com

info@wildearth-travel.com

three species of turtle, the world's largest skink, hornbills, and tiny pygmy parrots. Stroll through the forest while you learn more about how the island's traditional landowners rejected logging offers and came together to save this island's biodiversity for themselves and their future generations.

Guided walks will be the highlight of your day, allowing you to witness the diversity of flora and fauna. You will also have an opportunity to see the turtle tagging process, and finish with snorkeling over the island's flourishing reefs.

MAROVO LAGOON, SOLOMON ISLANDS

Marovo Lagoon is the world's largest double barrier enclosed saltwater lagoon. Today, you will be welcomed to this natural wonder by the locals with traditional dancing. Learn about village life and observe the work of expert woodcarvers, who are justifiably famous for the intricate pieces they create from ebony with inlays of mother-of-pearl. Spend the afternoon exploring Marovo Lagoon's coral reef ecosystems, where the waters teem with tropical fish and boast exceptional diving and snorkelling sites.

FLORIDA GROUP, SOLOMON ISLANDS

The Ngella Islands, also called the Florida Islands, are nestled in the Central Province of the Solomon Islands. On August 7, the US 1st Battalion landed on Florida Island to support the attack on nearby Tulagi, which was once the capital of the Solomons before it was moved to Honiara after WWII. The Florida Islands became a secondary base for the US, Australian, and New Zealand forces throughout World War II in the Pacific. Visit Tulagi town to understand more about the history of Florida islands. There will be plenty of opportunities for snorkelling and diving, with time to view the MS World Discoverer shipwreck at Roderick Bay.

MAKIRA - STAR HARBOUR, SOLOMON ISLANDS

Formerly known as San Cristobal Island, this designation was bestowed by the

Spanish explorer Alvaro de Mendaña in 1568. Dive into the history of Star Harbour which is at the southern end of Makira and is a sub-provincial headquarters for the Makira-Ulawa Province. Beginning with a colourful welcome in the morning, you will enjoy a cultural performance before exploring the village. Our expert guides will share the harbour's World War II history before we spend the afternoon snorkelling and birdwatching off Nafinua (frigate bird) Island.

NENDO, SOLOMON ISLANDS

Our last stop in the Solomon Islands, Nendo Island is the largest of the Santa Cruz Group. In 1595, Spanish explorer Alvaro de Mendaña became the first European to sight Nendo Island, naming it Santa Cruz. This island is the location of an unsuccessful colonisation attempt by the Spanish explorer. Here, you can view, and purchase quality artefacts created by the skilled craftsmen of the region. Later, head to Luowa village where you can enjoy a cultural performance by the locals and an opportunity to snorkel over the fringing reef.

LOH ISLAND - TORRES GROUP, VANUATU

This morning, we make our way to the Torres group, Vanuatu's northernmost islands. Learn about the volcanic origin of these scenic islands, comprised of four islets: Hiu, Tegua, Loh and Toga. Immerse yourself in the culture of the I h-tem t on Loh Island, where vibrant ritual headdresses called tem t are utilised during special singing and dancing ceremonies to honor primordial spirits. There will also be an opportunity to dive and snorkel from the white sandy beaches.

ESPIRITU SANTO, VANUATU

Espiritu Santo, or simply 'Santo' to the locals, is the largest island in Vanuatu. In the aftermath of World War II, the island's southeastern point earned the name, 'Million Dollar Point' after American soldiers sunk the vehicles of their

Wild Earth Travel

Small Ships, Big Adventures

0800 945 3327 (within New Zealand) | +64 (0) 3 365 1355 | **1800 107 715** (within Australia)

info@wildearth-travel.com | **wildearth-travel.com**



Wild Earth Travel

Small Ships, Big Adventures



wildearth-travel.com

info@wildearth-travel.com

retired task force after being unable to sell them.

Santo and its surrounding islands are known for their world class beaches and 'blue holes' - natural swimming pools located deep within the jungle.

Here we will avoid the well-trodden locations, in favour of less touristed destinations with opportunities for snorkelling, diving and 'blue hole' swims.

AMBRYM, VANUATU

Home to majestic Benbow and Marum volcanoes, Ambrym is the fifth largest island in Vanuatu and home to one of the most active volcanoes in the New Hebrides Arc. Despite the volcanic activity, Ambrym is home to around 7,000 inhabitants, most of which live in the 'safe zone' corners of the island that is known as the 'black magic' centre of Vanuatu. Today, witness the Rom Dance, one of the most iconic traditional dances of Vanuatu. Discover the island's astonishing topography covered by jungle and hear the stories of villagers living in the shadow of a volcano.

DAY 17: PORT VILA, VANUATU

Disembark at 8:00 am and enjoy complimentary transfers to Port Vila hotels and the airport.

Please note:

Itineraries are subject to change.

Wild Earth Travel

Small Ships, Big Adventures

wildearth-travel.com

info@wildearth-travel.com

YOUR SHIP: CORAL ADVENTURER

YOUR SHIP:	Coral Adventurer
VESSEL TYPE:	Expedition Ship
LENGTH:	93.4 meters
PASSENGER CAPACITY:	120 (60 staterooms)
BUILT/REFURBISHED:	2019

Coral Adventurer is a modern expedition cruise ship launched in 2019, purpose-built to explore Australia's remote coastlines and international tropical destinations in comfort and style. With a capacity of just 120 guests, she strikes a perfect balance between small-ship intimacy and ocean-going capability. Her shallow draught and state-of-the-art navigation systems allow access to isolated regions unreachable by larger vessels, while dual Xplorer tenders and a fleet of zodiacs provide safe, seamless access to remote shores. Designed with wide open spaces and warm, natural interiors by Brisbane-based Arkhefield, Coral Adventurer embodies the spirit of Australian adventure, hospitality, and connection to the great outdoors.

All staterooms are outside-facing with ensuites, most featuring private balconies, and range from elegant Bridge Deck Suites to well-appointed Coral Deck cabins. Guests enjoy single-seating dining, where fresh, locally sourced meals are prepared in an open-view galley and served with boutique Australian wines. Life onboard is relaxed and sociable, with a sundeck bar, panoramic promenade deck, lecture lounge, library, and even a gym. Coral Adventurer also offers complimentary Wi-Fi, a lift between decks, and high levels of guest-crew interaction, creating a

welcoming, immersive expedition experience in some of the world's most spectacular natural environments.



vironments.

Wild Earth Travel

Small Ships, Big Adventures

0800 945 3327 (within New Zealand) | +64 (0) 3 365 1355 | **1800 107 715** (within Australia)

info@wildearth-travel.com | **wildearth-travel.com**

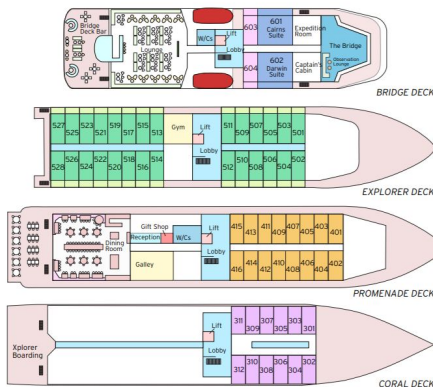
Wild Earth Travel

Small Ships, Big Adventures

wildearth-travel.com

info@wildearth-travel.com

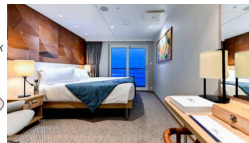
INSIDE YOUR SHIP



Name Coral Adventurer
Owners CPC Marine Pty Ltd
Flag Australian
Year of Build 2019
LOA 93.4 metres
Beam 17.2 metres
Draught 4.5 metres
Gross Tonnage 5599 tonnes
Construction VARD
Main Engines Caterpillar 3512C
Azimuth Pod Rolls Royce Azipull
Cruising Speed 13.8 knots
Max. passengers 120
Max. crew 48
Tenders 2 Xplorers, 6 Zodiacs

BRIDGE DECK BALCONY SUITE
 • 55.8sqm • Private Balcony • Twin or junior king
BRIDGE DECK BALCONY STATEROOM
 • 21.4sqm • Private Balcony • Twin or junior king
EXPLORER DECK BALCONY STATEROOM
 • 21.4sqm • Private Balcony • Twin or junior king
PROMENADE DECK STATEROOM
 • 17sqm • Picture windows • Twin or junior king
CORAL DECK STATEROOM
 • 17sqm • Porthole windows • Twin or Junior king

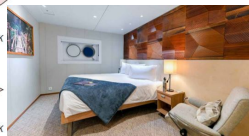
BRIDGE DECK BALCONY STATEROOM



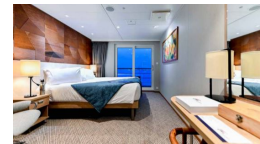
BRIDGE DECK BALCONY SUITE



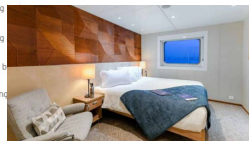
CORAL DECK STATEROOM



EXPLORER DECK BALCONY STATEROOM



PROMENADE DECK STATEROOM





Wild Earth Travel

Small Ships, Big Adventures



wildearth-travel.com

info@wildearth-travel.com

PRICING

12-Jan-2026 to 28-Jan-2026

CORAL DECK STATEROOM	16390 AUD pp
PROMENADE DECK STATEROOM	19590 AUD pp
EXPLORER DECK BALCONY STATEROOM	25990 AUD pp
BRIDGE DECK BALCONY STATEROOM	28590 AUD pp
BRIDGE DECK BALCONY SUITE	36790 AUD pp



Wild Earth Travel
Small Ships, Big Adventures

0800 945 3327 (within New Zealand) | +64 (0) 3 365 1355 | **1800 107 715** (within Australia)

info@wildearth-travel.com | **wildearth-travel.com**