



Wild Earth Travel

Small Ships, Big Adventures

wildearth-travel.com

info@wildearth-travel.com

THE LEGENDARY FJORDS OF NORWAY - LUXURY EXPEDITION FROM BERGEN

Sail along Norway's mythical fjords following in the footsteps of courageous Vikings during an exceptional journey between Bergen and Fredrikstad. During this 9-day cruise aboard *Le Champlain*, the mystical decors edged with charming villages are sure to surprise you.

At each port of call on your trip, every guest will be able to choose one included activity from the selection offered by Ponant. During this cruise, admire the incredible panorama composed of waterfalls and craggy peaks from aboard the Flam train, one of the steepest and most famous railways in the world, set off to explore the surroundings of Geiranger, including Mount Dalsnibba. The diversity of options on offer promises intense and varied experiences. (Find the full list of excursions under the Itinerary tab.)

Departing from Bergen, famous for its Hanseatic wharf which still bears some traces of the city's rich Viking past, your first stop will be Flam. Nestled in the heart of the Aurlandsfjord between verdant mountains, this picturesque village with colourful houses is home to the famous Flam Railway.

After cruising along Norway's longest and deepest fjord, Sognefjord, you will sail one of the most mythical fjords in the Land of the Midnight Sun, Geirangerfjord. This UNESCO World Heritage Site is as inspiring as it is fascinating.

In Maløy, a lovely little town backing onto the Norwegian Sea, you will have the privilege of discovering enchanting decors of

granite summits covered in a verdant coat, superb silvery sandy beaches, traditional red wooden houses...

Next, you will sail to Eidfjord. In the ancient glacial valley of the Hardanger Fjord, the steep mountains and roaring waterfalls, including the Voring Falls, among the highest in Europe, are an awesome display of nature.

In Stavanger, a small town with harmonious blend of old and modern styles, you will admire the wonderfully preserved fishermen's houses that date from the 18th century, before sailing to the famous Lysefjorden, bordered by granite cliffs.

You will then head towards the Sorlandet region, to enjoy the timeless charm and gentle climate of Kristiansand. Here, you will be able to stroll around the picturesque little streets, edged with typical wooden houses, and discover the town's lively port.

Finally, you will reach Fredrikstad, the best-preserved fortified town in northern Europe and the end of an unforgettable trip.

Wild Earth Travel

Small Ships, Big Adventures

0800 945 3327 (within New Zealand) | +64 (0) 3 365 1355 | **1800 107 715** (within Australia)

info@wildearth-travel.com | **wildearth-travel.com**

Wild Earth Travel

Small Ships, Big Adventures

wildearth-travel.com

info@wildearth-travel.com



Nestled in the heart of the fjord country, less than 200 kilometres from Bergen, the picturesque village of Flam - pronounced Flom - offers you an experience of authentic Norway. You can mosey around the brightly coloured streets and admire the majestic contours of the surrounding mountains. The town is also the departure point for the mythical train route Flamsbana, 20 kilometres long, whose journey offers a superb view of the scenery, as sublime as it is pristine. This attraction makes Flam one of the country's main tourist destinations.

Day 3 - Sailing in the Sognefjord

Nordfjordeid is a small town nestling at the end of an arm of the gigantic Nordfjord. Featuring valleys with abundant vegetation and mountainous terrain, nature here offers a 360-degree view that was conducive to the early settlement of Viking communities, as evidenced by the large number of tombs, some of the country's largest and richest. You will be able to deepen your knowledge of Nordic culture and traditions at the Sagastad Viking Centre, a surprising museum with interactive exhibitions, also home to the Myklebust, one of the world's largest Viking ships, measuring 30 metres (98 feet) in length. In addition to its stunning setting, the town is known for its many breeders of Norwegian farm horses, the Fjord horse, offering the opportunity for wonderful hikes in the surrounding area.

Day 3 - Sailing in the Geiranger Fjord

Listed as a UNESCO World Heritage Site since 2005, Geirangerfjord is part of the West Norwegian Fjords. Located in the south-west of Norway, to the north-east of Bergen, the fjord stretches from Stavanger in the south to Andalsnes, 500 km north-east. It is one of the longest and deepest fjords in the world and considered to be one of the most spectacular landscapes on the planet. You will admire the exceptional natural beauty of its narrow and steep-sided crystalline rock walls, rising to a height of 1,400 m and extending 500 m below sea level. Numerous waterfalls are part of the great variety of natural terrestrial and marine phenomena to be found at this site.

table trip.

ITINERARY

Day 1 - Bergen

Located at the end of Byfjord, Bergen was the capital of Norway in the 12th and 13th Centuries and has preserved some very beautiful monuments from the time when it was home to royalty. Wandering through Bergen's streets means going back in time, in search of the hidden treasures that have been listed as World Heritage Sites by UNESCO. A veritable openair museum, Bergen is home to a thriving artistic community of painters, potters, jewellers. The Bergen cable car offers you a splendid panorama over the port and the surrounding fjords. Do not miss the visit to the old quarter with its narrow streets, a testimony of the power of the hanseatic League that controlled trade in Northern Europe at the end of the Middle Ages.

Day 2 - Flam

Wild Earth Travel

Small Ships, Big Adventures

0800 945 3327 (within New Zealand) | +64 (0) 3 365 1355 | **1800 107 715** (within Australia)

info@wildearth-travel.com | wildearth-travel.com

Wild Earth Travel

Small Ships, Big Adventures



wildearth-travel.com

info@wildearth-travel.com

Day 3 - Geiranger

A must-see stopover in Norway, located halfway between Bergen and Trondheim, Geiranger offers the stunning beauty of a natural decor, listed as a UNESCO World Heritage site. You will be able to admire the splendour of the sheer cliffs, dark rocks and crystal-clear water that make the place famous, like the majestic and mythical Seven Sisters waterfall. The sides of the fjord offer many possibilities for hiking: the Eagle's Road takes you up to a steep stretch offering a gorgeous panoramic view. A visit to Geiranger village will immerse you in the rhythm of life in the little local community.

Day 4 - Maløy

To the east of Vagsøy island, at the mouth of the emblematic Nordfjorden, Maløy shelters one of the most important fishing ports in the Sogn og Fjordane province. Surrounded by raw and preserved nature, where granite peaks covered with a green coat and idyllic sandy beaches blend in harmony, the port will charm you with its pretty little streets and the many lighthouses that border it. Vagsøy island is also famous for its mythical Kannesteinen Rock. This natural masterpiece is sculpted by the currents of the Norwegian Sea; its whale-tail-shaped silhouette is the result of thousands of years of erosion.

Day 5 - Sailing in the Hardangerfjord

In the heart of Norway's natural scenery, to the southeast of Bergen, you will sail the peaceful waters of the Hardangerfjord, the second longest fjord in Norway. At the wide mouth of this majestic fjord, gently sloping valleys offer the sight of lush meadows and fruit trees galore. Moreover, it is rightly nicknamed the "fruit orchard of Norway". As you continue sailing and move further inland, the fjord narrows and the rolling surroundings make way for vertiginous walls and high mountainous areas. Enhanced by the reflections of the light on the soft waters, at times clear, at times deep, the landscapes become wilder and reveal an uncut diamond of singular beauty.

Day 5 - Eidfjord

Eidfjord is nestled in one of the last branches of the beautiful Hardanger Fjord, 'the Norwegian orchard', which has been famous for its fruit production since medieval times. All the forces of nature seem to come together in this ancient glacial valley. Imposing and majestic mountains border the Hardangervidda National Park, the largest high-altitude plateau in Europe. The serene waters of the fjord and Lake Eidfjord are matched by the roar of the Voring Falls, one of Europe's highest waterfalls and Norway's main source of hydroelectric power.

Day 5 - Sailing in the Hardangerfjord

In the heart of Norway's natural scenery, to the southeast of Bergen, you will sail the peaceful waters of the Hardangerfjord, the second longest fjord in Norway. At the wide mouth of this majestic fjord, gently sloping valleys offer the sight of lush meadows and fruit trees galore. Moreover, it is rightly nicknamed the "fruit orchard of Norway". As you continue sailing and move further inland, the fjord narrows and the rolling surroundings make way for vertiginous walls and high mountainous areas. Enhanced by the reflections of the light on the soft waters, at times clear, at times deep, the landscapes become wilder and reveal an uncut diamond of singular beauty.

Day 6 - Stavanger

At the far end of the country, stands the harbour town of Stavanger, with its warm, friendly atmosphere. A friendliness you'll notice in the little old town cobbled streets, which has some 170 old wooden houses, as well as in its modern city centre, always bustling. Strategic place during the Viking era, you will be able to discover a recreated traditional village as well as the famous Swords in Rock, three granite swords standing 10 metres (33 ft) tall, symbolising the last victory of the King of Norway Harald I, in 872.

Day 6 - Sailing in Lysefjorden

Wild Earth Travel

Small Ships, Big Adventures

0800 945 3327 (within New Zealand) | +64 (0) 3 365 1355 | **1800 107 715** (within Australia)

info@wildearth-travel.com | **wildearth-travel.com**

Wild Earth Travel

Small Ships, Big Adventures



wildearth-travel.com

info@wildearth-travel.com

You will sail into the heart of one of Norway's most breathtaking fjords, its marvellous decor dominated by pristine nature, between vertiginous granite cliffs, crystal-clear waters and luxuriant vegetation. Very close to Stavanger, the quiet waters of Lysefjorden stretch out over around forty kilometres, beneath impressive rocks. Admire the world-famous site of Preikestolen (Pulpit Rock), a majestic cliff in the shape of a pulpit that rises to more than 600 metres above the waters. A bit further on, Flørlø, from the top of its 4,444 steps, is the world's longest wooden stairway, whereas the Kjerag, with its mythical boulder wedged between two rock faces, provides an unusual and unforgettable spectacle.

Itineraries are subject to change.

Day 7 - Kristiansand

Located in the region of Sørlandet, the town of Kristiansand has prospered for a long time from its building industry and shipbuilding installations. Today, the town offers its timeless charm and mild climate the whole year round. You'll be amazed by its vibrant pastel colours, and its streets laid out in right angles. Among the districts worth exploring is Posebyen with its wooden houses inhabited in the olden days by workers and craftsmen. Here you can really get to grips with the town's energy.

Days 8 - 9 Fredrikstad

Nestling on the shores of the Glomma estuary, Fredrikstad captivates with its rich historical heritage, picturesque canals and warm atmosphere. Founded in 1567, the fortified old town still has traces of its rich past. Fall under the spell of its cobbled narrow streets, edged with traditional old wooden buildings, boutiques and lively cafes, and also discover the extremely well-preserved ramparts, built almost 5 centuries ago. Nature enthusiasts will also appreciate the magnificent hiking paths along the Oslo fjord and surrounding islands, such as Hankø, with its idyllic beaches and lush plains.

Please Note:

Wild Earth Travel
Small Ships, Big Adventures

0800 945 3327 (within New Zealand) | +64 (0) 3 365 1355 | **1800 107 715** (within Australia)

info@wildearth-travel.com | **wildearth-travel.com**

Wild Earth Travel

Small Ships, Big Adventures

wildearth-travel.com

info@wildearth-travel.com

YOUR SHIP: LE CHAMPLAIN

YOUR SHIP:	Le Champlain
VESSEL TYPE:	Luxury
LENGTH:	127 metres
PASSENGER CAPACITY:	92 cabins
BUILT/REFURBISHED:	2017/2018

Featuring innovative and environmentally-friendly equipment, elegantly designed cabins, spacious suites with large windows, and lounge areas that open onto the outside, this new limited-capacity yacht boasting just 92 cabins and suites will offer you a truly unique cruising experience.

As the first ship in a new series, Le Champlain will embody the unique atmosphere that is the cruise line's hallmark: a subtle blend of refinement, intimacy and comfort.

Aboard this ship that flies the French flag, you will experience the incomparable pleasure of an intimate cruise, with the possibility of exploring an ever-increasing range of destinations in an ethnic-chic ambiance with luxury service.

Experience a luxurious setting where the accent is on authenticity and passion for travel.

RESTAURANTS

As it is an essential part of French culture, gastronomy will naturally have pride of place aboard this new ship. Through its two restaurants, Le Champlain will invite you on a journey to elegance and epicureanism.

In a relaxed atmosphere, a first dining area located on Deck 3 and able to seat 70 will serve grilled meats daily, along with a

variety of salads and desserts.

To the back of Deck 4, you will find a 260 m² panoramic restaurant which can accommodate all of our passengers in a single sitting. Designed differently to that on our other ships, this dining area, which opens onto the outside, will have a buffet of salads, desserts and cheeses at your disposal. Our discreet and attentive crew will provide table service for hot meals.

PUBLIC AREAS

Like Le Boreal and its sisterships, Le Champlain has many common areas that are designed and equipped to meet all of your needs while preserving the intimacy of each passenger.

A 140 m² reception area includes: A reception/concierge desk, An excursions desk, The ship's administrative services, The sales office, manned by our Guest Relations Officer, Our 50 m² boutique which sells clothing, jewellery, beauty products, postcards and various accessories, Toilets accessible to passengers with reduced mobility.

A new hydraulic platform with adjustable height provides: Easier boarding than on any other cruise ship, Easier Zodiac embarkation and disembarkation for expeditions, Easier access to the sea for swimming and practising various water sports such as kayaking or paddle-boarding.

A pool deck offering: A pool with a panoramic view, equipped with a counter-current swimming system, A pleasant solarium, An outdoor bar and lounge with armchairs and sofas.

A 200 m² main lounge which can accommodate all of our passengers to share convivial moments and to host activities organised during the day or evening.

Lastly, a theatre that seats 188, equipped with: The latest

Wild Earth Travel

Small Ships, Big Adventures

0800 945 3327 (within New Zealand) | +64 (0) 3 365 1355 | **1800 107 715** (within Australia)

info@wildearth-travel.com | **wildearth-travel.com**

Wild Earth Travel

Small Ships, Big Adventures



wildearth-travel.com

info@wildearth-travel.com

sound and lighting technology, A LED wall as the stage backdrop, for the projection of high-resolution images and videos.



and videos.

Wild Earth Travel

Small Ships, Big Adventures

0800 945 3327 (within New Zealand) | +64 (0) 3 365 1355 | **1800 107 715** (within Australia)

info@wildearth-travel.com | **wildearth-travel.com**

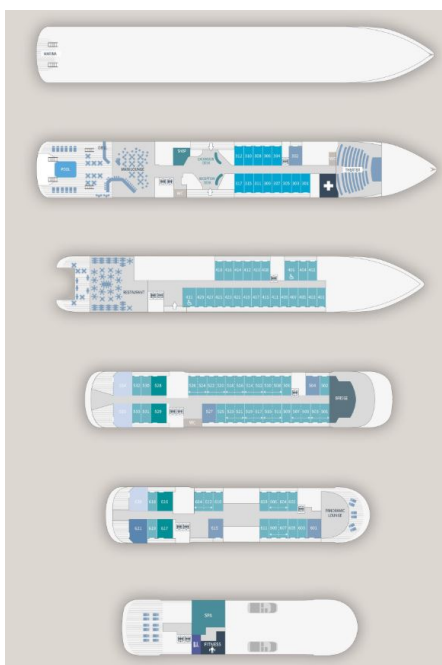
Wild Earth Travel

Small Ships, Big Adventures

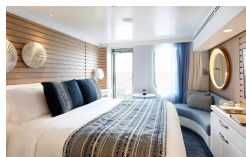
wildearth-travel.com

info@wildearth-travel.com

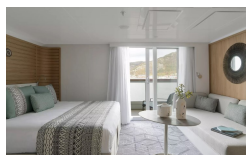
INSIDE YOUR SHIP



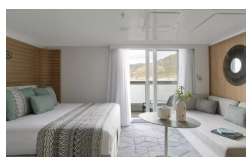
Deluxe Stateroom



Deluxe Suite Deck 4



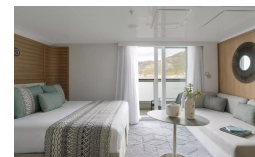
Deluxe Suite Deck 6



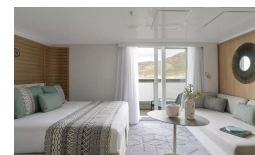
Grand Deluxe Suite Deck 6



Deluxe Suite Deck 3



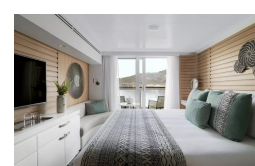
Deluxe Suite Deck 5



Grand Deluxe Suite Deck 5



Prestige Deck 4



Wild Earth Travel
Small Ships, Big Adventures

0800 945 3327 (within New Zealand) | +64 (0) 3 365 1355 | 1800 107 715 (within Australia)

info@wildearth-travel.com | wildearth-travel.com

Wild Earth Travel

Small Ships, Big Adventures

wildearth-travel.com

info@wildearth-travel.com

PRICING

28-Jun-2026 to 06-Jul-2026

Deluxe Stateroom	13810 AUD pp
Prestige Deck 4	15340 AUD pp
Prestige Deck 5	16110 AUD pp
Prestige Deck 6	17040 AUD pp
Deluxe Suite Deck 6	23820 AUD pp
Deluxe Suite Deck 3	23820 AUD pp
Deluxe Suite Deck 4	23820 AUD pp
Deluxe Suite Deck 5	23820 AUD pp
Prestige Deck 5 Suite	32290 AUD pp
Prestige Deck 6 Suite	33980 AUD pp
Privilege Suite Deck 6	35680 AUD pp
Privilege Suite Deck 5	35680 AUD pp
Grand Deluxe Suite Deck 5	39210 AUD pp
Grand Deluxe Suite Deck 6	39210 AUD pp
Owner's Suite	41210 AUD pp

Wild Earth Travel

Small Ships, Big Adventures

0800 945 3327 (within New Zealand) | +64 (0) 3 365 1355 | **1800 107 715** (within Australia)

info@wildearth-travel.com | **wildearth-travel.com**



Wild Earth Travel

Small Ships, Big Adventures



wildearth-travel.com

info@wildearth-travel.com

SPECIAL OFFERS

Online prices reflect the current brochure fare savings of up to 30%. Prices may change based on demand. Terms and conditions apply. This special offer is subject to availability. Please contact us for more details.



Wild Earth Travel

Small Ships, Big Adventures

0800 945 3327 (within New Zealand) | +64 (0) 3 365 1355 | **1800 107 715** (within Australia)

info@wildearth-travel.com | **wildearth-travel.com**