



Wild Earth Travel

Small Ships, Big Adventures

wildearth-travel.com

info@wildearth-travel.com

THE JEWELS OF THE AEGEAN - 10 DAY TURKEY & GREEK ISLANDS LUXURY CRUISE

Sail the Greek and Turkish shores during an exceptional journey, an 10-day cruise aboard Le Dumont-d'Urville, during which you will fall under the spell of these island jewels and secular cities, featuring ancient ruins and splendid scenery, which people the Eastern Mediterranean.

Throughout your journey, you will benefit from an excursion included per person per port of call, to choose from a selection offered by PONANT. During this cruise, visit the archaeological site of Ephesus from Kusadasi, discover the ruins of Mycenae and Epidaurus from Nafplio, or admire the sumptuous archaeological sites, from the Temples of Zeus, Apollo and Athena to the Terrace of the Lions, from Delos. The diversity of experiences on offer promises you intense and varied moments (to discover the full range of excursions, go to the itinerary tab). The diversity of experiences on offer promises you intense and varied moments (to discover the full range of excursions, go to the itinerary tab).

From Antalya, a former Roman port with picturesque alleyways and fine Ottoman residences, Le Dumont-d'Urville will sail south for the Dodecanese archipelago. On the mythical island of Rhodes, let yourself be swept away by the charm of this medieval city with its gothic architecture, a UNESCO World Heritage Site.

Le Dumont-d'Urville will leave Greece to reach Kusadasi in Turkey. An old fishing village with history going back 5,000 years, not far from the Ephesus site, the town is now one of the

country's most famous seaside resorts. You will discover Patmos, known as the "Jerusalem of the Aegean Sea". This island, where Saint John is said to have written the Apocalypse, offers unique landscapes combining white sandy beaches and rocky coves.

Your ship will sail to the southern Aegean Sea to discover the capital of Crete, Heraklion, built on a hillside overlooking the port and encircled by formidable Venetian walls.

You will then sail north-west for the charming Monemvasia. A romantic haven for the Athenians, this magnificent peninsula conserves treasures of Venetian and Byzantine architecture in the small vaulted streets of its fortified medieval village, which feature thousands of shades of ochre.

Further north, you will arrive in Nafplio, the departure point for discovering the Ancient Theatre of Epidaurus and the Mycenae archaeological site, both UNESCO World Heritage sites.

In the south-eastern Aegean Sea, the Cyclades archipelago invites you to enjoy the wild and appealing beauty of its islands. Delos, a veritable open-air museum, offers a unique testimony of the succession of different civilisations during the Aegean period. Then there's Paros, renowned for its sublime white marble, a veritable concentration of Greek beauty, with its olive groves and ancient monuments. The island of Syros is the last port of call on your cruise: the Cyclades capital will surprise you with its authenticity and neo-classical architecture.

Wild Earth Travel

Small Ships, Big Adventures

0800 945 3327 (within New Zealand) | +64 (0) 3 365 1355 | **1800 107 715** (within Australia)

info@wildearth-travel.com | **wildearth-travel.com**

Wild Earth Travel

Small Ships, Big Adventures

wildearth-travel.com

info@wildearth-travel.com



With its particularly agreeable climate, the island of Rhodes invites you to walk its pathways and discover its immaculate villages and sumptuous medieval city, a UNESCO World Heritage site. At the centre of the island the mountains are covered in forest and on the western slopes we find vineyards and crops. Rhodes also owes much of its charm and its character to the Knights of St John who reigned over the island from 1310 to 1522 and built impressive defensive walls punctuated with majestic gateways. Do not miss this delightful island with its peaceful beaches and its large walkways, perpetuating the myth of the famous Colossus, the legendary statue that is one of the Seven Wonders of the World.

Day 3 KUSADASI

The attractive seaside resort of Kusadasi is located in a gulf on the western coast of Turkey. You can bathe there in clear waters or stroll along the coastal walk, in the shade of palms. In the historical district, you can take a mosey down the narrow streets and explore the colourful shops in the bazaar. Close by, the Ephesus archaeological site in the hillsides provides an opportunity to discover the ruins of one of the most famous cities of Antiquity.

Day 4 PATMOS

Patmos is one of the legendary must-see islands in the Dodecanese. This is where Saint John resided, presumed author of the last book in the Bible. The cave of the Apocalypse and the Saint John Monastery are dedicated to him. These sites, which are listed by UNESCO as World Heritage, are located at the top of a hillside planted with vines and orchards. On the shore, the crystalline coves of Kambos and Lampi offer absolutely gorgeous swimming areas.

Day 5 HERAKLION, CRETE

Heraklion, the capital of Crete, is the island's most populous city. The hustle and bustle of this seaport is an integral part of its charm. It is built on a hillside overlooking the port and is encircled by impressive Venetian walls. From the top of these, you will be able to enjoy one of the most beautiful views of the city. The old town is teeming with small shops, squares, cafes and vibrant architectural evidence of the city's long history. The Palace of Knossos illustrates the wealth and power of its legendary sovereign, King Minos. The archaeological museum houses one of the largest collections of Minoan

chitecture.

ITINERARY

Day 1 ANTALYA

On the Turkish Mediterranean coast, discover the seaside resort of Antalya. While the city sports magnificent fine sandy beaches, it is also known for its significant historical heritage. Many vestiges bear witness to the importance of this former Roman port, such as Hadrian's Gate, built in the year 130 in honour of the visiting emperor. In the old town, it is possible to admire magnificent Ottoman houses with flowery gardens, as well as the broken minaret, built on the ruins of a former Byzantine church. The city's surroundings also provide an opportunity to discover major archaeological sites, such as that of the ancient city of Aspendos, renowned for its impressive Roman theatre.

Day 2 RHODES

Wild Earth Travel

Small Ships, Big Adventures

0800 945 3327 (within New Zealand) | +64 (0) 3 365 1355 | 1800 107 715 (within Australia)

info@wildearth-travel.com | wildearth-travel.com



Wild Earth Travel

Small Ships, Big Adventures

wildearth-travel.com

info@wildearth-travel.com

artefacts and is worth a visit.

Day 6 MONEMVASIA

The jewel of the southern Peloponnese, Monemvasia is the romantic refuge for Athenians. Given the poetic nickname of the "stone ship", this majestic peninsula is home to an incredible fortified medieval village, lying at the foot of its abrupt cliffs, which seems to have been cast by the gods from the Aegean Sea. Contemplate the horizon from its ramparts, a veritable walkway defying the azure waters, and stroll through its vaulted narrow streets with their thousand shades of ochre. At the crossroads of western and eastern influences and the maritime routes of the continent, Crete and the Cyclades, Monemvasia has preserved in this magical decor the treasures of Venetian and Byzantine architecture.

Day 7 NAFPLION

The engaging town of Nafplion is staggered up green hillsides of the Argolic Gulf, to the east of the Peloponnese. Do not be surprised by its extremely varied cultural heritage. Some of the must-see visits are the ancient agora on the plateau of Akronafplia, Italianate arcades in Syntagma square as well as the baroque fortress of Palamidi on a hillside of the same name. At the top of the hill, views of the gulf and the surrounding mountains are simply awesome. If you want to chill out by the water's edge, walk along the Arvanitia promenade to a beautiful creek in the shade of cedars and cypresses.

Day 8 DELOS & PAROS

This legendary Cyclades island of Delos stands just a few miles southwest of Mykonos. The ceremonial solemnity of this ancient holy sanctuary will not leave you indifferent. The sheer size and importance of this UNESCO World Heritage site which covers over half of the island is thrilling in itself. From the Stoa of Antigonos, the Terrace of the Lions, to the carved marble animal statues, you will make discovery after discovery, against a backdrop of the Aegean stretching to the horizon. The theatre steps on the hillside are a particularly good place from which to enjoy the expansive view.

Famous for its white marble, the island of Paros is located in the Cyclades. Along the quays of Parikia, its main town, you'll see Byzantine churches and neoclassical buildings. To make the most of the turquoise waters, you can stop

over in Naoussa. This little fishing port is bounded by a very beautiful cove.

Day 9 SYROS

Located to the west of Mykonos, Syros is an attractive island in the Cyclades. The island has been inhabited since ancient times and Ermoupolis, its capital, built in an amphitheatre, is spread over two hills. You may wish to visit its archaeological museum and the historical district, where the beautiful houses are evidence of the island's strategic location for trade, between the East and the West. Admire the superb Agios Nikolaos Church or the Church of the Assumption of Virgin Mary. Further on, the medieval town of Ano Syros allows to admire charming stairways and arched passageways, as well as small, white houses decorated with bougainvilleas.

Day 10 ATHENS

The Greek capital city is located on the edge of the Saronic gulf, in the east of the country. It bears a plural name in reference to the first villages that surround the Acropolis. You will be enchanted by the rocky plateau presided by its monuments listed as UNESCO World Heritage. In the city below, you can visit some of the liveliest districts in Athens: Plaka, with its maze of colourful streets, and where, in the evenings the drifting aroma of moussaka and garlic prawns will tickle your taste buds. The National Archaeological museum and the Cycladic Art Museum are also some of the city's key attractions and allow visitors to discover Athens' cultural past.

Please note:

Itineraries are subject to change.

Wild Earth Travel

Small Ships, Big Adventures

0800 945 3327 (within New Zealand) | +64 (0) 3 365 1355 | **1800 107 715** (within Australia)

info@wildearth-travel.com | **wildearth-travel.com**



Wild Earth Travel

Small Ships, Big Adventures

wildearth-travel.com

info@wildearth-travel.com

YOUR SHIP: LE DUMONT D'URVILLE

YOUR SHIP: Le Dumont d'Urville

VESSEL TYPE: Luxury

LENGTH:

PASSENGER CAPACITY: 92 cabins

BUILT/REFURBISHED: 2017/2018

Featuring innovative and environmentally-friendly equipment, elegantly designed staterooms, spacious suites with large windows, and lounge areas that open onto the outside, this new limited-capacity yacht boasting just 92 staterooms and suites will offer you a truly unique cruising experience.

As the first ship in a new series that remains true to the Ponant spirit, Le Dumont d'Urville will embody the unique atmosphere that is the cruise line's hallmark: a subtle blend of refinement, intimacy and comfort.

Aboard this ship that flies the French flag, you will experience the incomparable pleasure of an intimate cruise, with the possibility of exploring an ever-increasing range of destinations in an ethnic-chic ambiance with luxury service.

Experience a luxurious setting where the accent is on authenticity and passion for travel.

RESTAURANTS

As it is an essential part of French culture, gastronomy will naturally have pride of place aboard this new ship. Through its two restaurants, Le Dumont d'Urville will invite you on a journey to elegance and epicureanism.

In a relaxed atmosphere, a first dining area located on Deck 3

and able to seat 70 will serve grilled meats daily, along with a variety of salads and desserts.

To the back of Deck 4, you will find a 260 m² panoramic restaurant which can accommodate all of our passengers in a single sitting. Designed differently to that on our other ships, this dining area, which opens onto the outside, will have a buffet of salads, desserts and cheeses at your disposal. Our discreet and attentive crew will provide table service for hot meals.

PUBLIC AREAS

Like Le Boreal and its sisterships, Le Dumont d'Urville has many common areas that are designed and equipped to meet all of your needs while preserving the intimacy of each passenger.

A 140 m² reception area includes: A reception/concierge desk, An excursions desk, The ship's administrative services, The sales office, manned by our Guest Relations Officer, Our 50 m² boutique which sells clothing, jewellery, beauty products, postcards and various accessories, Toilets accessible to passengers with reduced mobility.

A new hydraulic platform with adjustable height provides: Easier boarding than on any other cruise ship, Easier Zodiac embarkation and disembarkation for expeditions, Easier access to the sea for swimming and practising various water sports such as kayaking or paddle-boarding.

A pool deck offering: A pool with a panoramic view, equipped with a counter-current swimming system, A pleasant solarium, An outdoor bar and lounge with armchairs and sofas. A 200 m² main lounge which can accommodate all of our passengers to share convivial moments and to host activities organised during the day or evening.



Wild Earth Travel

Small Ships, Big Adventures

0800 945 3327 (within New Zealand) | +64 (0) 3 365 1355 | **1800 107 715** (within Australia)

info@wildearth-travel.com | **wildearth-travel.com**

Wild Earth Travel

Small Ships, Big Adventures

wildearth-travel.com

info@wildearth-travel.com

Lastly, a theatre that seats 188, equipped with: The latest sound and lighting technology, A LED wall as the stage backdrop, for the projection of high-resolution images and videos.



and videos.

Wild Earth Travel

Small Ships, Big Adventures

0800 945 3327 (within New Zealand) | +64 (0) 3 365 1355 | **1800 107 715** (within Australia)

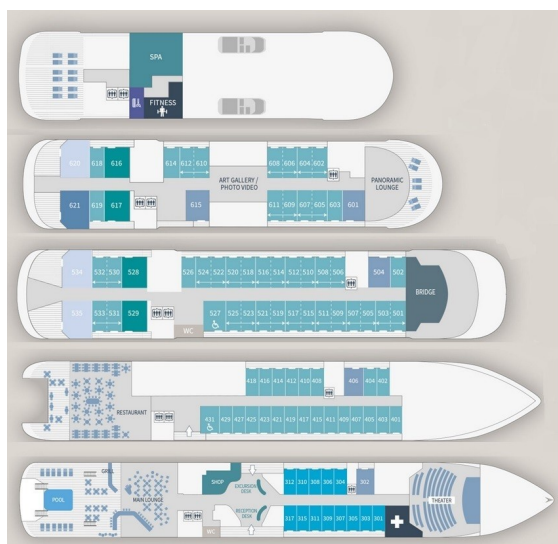
info@wildearth-travel.com | **wildearth-travel.com**



wildearth-travel.com

info@wildearth-travel.com

INSIDE YOUR SHIP

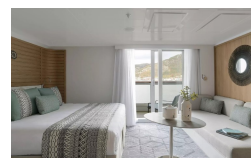


- Owner's Suite Deck 6
- Privilege Suites Deck 5-6
- Grand Deluxe Suites Deck 5-6
- Prestige Suites Deck 5-6
- Deluxe Suites Deck 5-6
- Prestige Cabins Deck 4-5-6
- Deluxe Cabins Deck 3

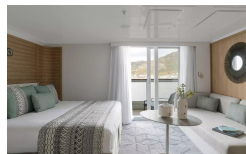
Deluxe Stateroom



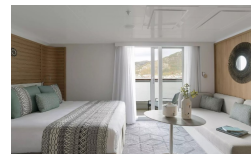
Deluxe Suite



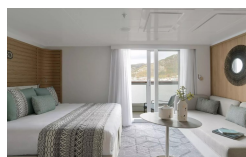
Deluxe Suite Deck 3



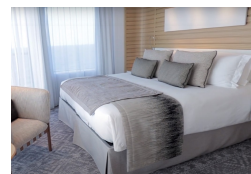
Deluxe Suite Deck 4



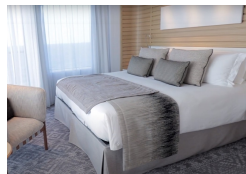
Deluxe Suite Deck 5



Grand Deluxe Suite



Grand Deluxe Suite Deck 5



Owner's Suite



Wild Earth Travel

Small Ships, Big Adventures

wildearth-travel.com

info@wildearth-travel.com

PRICING

29-Oct-2025 to 07-Nov-2025

Deluxe Stateroom	9960 AUD pp
Prestige Stateroom Deck 4	10500 AUD pp
Prestige Stateroom Deck 5	11020 AUD pp
Prestige Stateroom Deck 6	11640 AUD pp
Deluxe Suite Deck 5	18850 AUD pp
Deluxe Suite Deck 3	18850 AUD pp
Deluxe Suite	18850 AUD pp
Deluxe Suite Deck 4	18850 AUD pp
Prestige Suite Deck 5	20930 AUD pp
Prestige Suite Deck 6	21460 AUD pp
Privilege Suite	22490 AUD pp
Privilege Suite Deck 6	22490 AUD pp
Grand Deluxe Suite Deck 5	27200 AUD pp
Grand Deluxe Suite	27200 AUD pp
Owner's Suite	31220 AUD pp

Deluxe Stateroom	10940 AUD pp
Prestige Stateroom Deck 4	11570 AUD pp
Prestige Stateroom Deck 5	12180 AUD pp
Prestige Stateroom Deck 6	12910 AUD pp
Deluxe Suite	21390 AUD pp
Prestige Suite Deck 5	23840 AUD pp
Prestige Suite Deck 6	24460 AUD pp
Privilege Suite	25680 AUD pp
Owner's Suite	31220 AUD pp
Grand Deluxe Suite	31220 AUD pp

ADDITIONAL CHARGES:

Port Taxes 670 AUD pp

07-Nov-2025 to 16-Nov-2025

Wild Earth Travel
Small Ships, Big Adventures

0800 945 3327 (within New Zealand) | +64 (0) 3 365 1355 | **1800 107 715** (within Australia)

info@wildearth-travel.com | wildearth-travel.com



Wild Earth Travel

Small Ships, Big Adventures

wildearth-travel.com

info@wildearth-travel.com

SPECIAL OFFERS

Online prices reflect the current brochure fare savings of up to 30%. Prices may change based on demand. Terms and conditions apply. This special offer is subject to availability. Please contact us for more details.

Wild Earth Travel

Small Ships, Big Adventures

0800 945 3327 (within New Zealand) | +64 (0) 3 365 1355 | **1800 107 715** (within Australia)

info@wildearth-travel.com | **wildearth-travel.com**