



# Wild Earth Travel

*Small Ships, Big Adventures*

**wildearth-travel.com**

**info@wildearth-travel.com**

## THE IBERIAN PENINSULA AND FORTIFIED CITIES OF THE ATLANTIC - FRANCE, PORTUGAL & SPAIN CRUISE

From Lisbon to Honfleur, PONANT invites you aboard Le Boreal for a 12-day cruise, that will take you along the Portuguese, Spanish and French Atlantic coastlines.

Throughout your journey, you will benefit from an excursion included per person per port of call, to choose from a selection offered by PONANT. On this cruise, you visit the Carteret lighthouse, a structure over 85 meters high built in 1839, from Cherbourg, set out from Vigo to see the legendary city of Santiago de Compostela, the world's third most important Christian pilgrimage site, and admire iconic works of art at the Guggenheim Museum in Bilbao. The diversity of experiences on offer promises you intense and varied moments (to discover the full range of excursions, go to the itinerary tab).

From the port of Leixoes, you will visit Porto. The capital of Portugal's northern region, this "city of granite" is renowned for its wine but also for its remarkable historic centre, a UNESCO World Heritage Site.

Your journey will continue to Galicia and the city of Vigo, the biggest fishing port in Spain. Not far from here, Santiago de Compostela awaits you. This unmissable pilgrimage destination is home to a number of monuments from the Romanesque, Gothic and Baroque periods, testimony to its illustrious past.

Le Boreal will then head for the capital of the Spanish Basque Country, Bilbao. Between daring architecture and the continuation of its ancestral traditions, you will be able to

Wild Earth Travel

*Small Ships, Big Adventures*

**0800 945 3327** (within New Zealand) | +64 (0) 3 365 1355 | **1800 107 715** (within Australia)

info@wildearth-travel.com | **wildearth-travel.com**

# Wild Earth Travel

*Small Ships, Big Adventures*

**wildearth-travel.com**

**info@wildearth-travel.com**

witness the city's unique energy.

After a special moment in the wine capital of the world, Bordeaux, you visit the beautiful fortified town of Talmont-sur-Gironde before saluting the Cordouan lighthouse, a guardian of light designed to guide sailors at the entrance to the Gironde estuary.

You then head for the Quiberon peninsula. Here, you will discover a dreamy setting between two seas with breathtaking scenery: on one side, the Atlantic Ocean and its wild coastline; on the other, Quiberon Bay and its sandy beaches.

Le Boreal then sails to Douarnenez, Finistere's most westerly town. The striking wild coastline and sandy beaches make a magnificent natural backdrop to the ocean's crystal waters.

After stopping off in Cherbourg, you head for the pretty Normandy port of Honfleur, where you disembark.



disembark.

## ITINERARY

### Day 1 LISBON

Portugal's capital city located on the banks of the Tagus, only a few kilometres from the Atlantic coast, is a city of exceptionally rich cultural diversity. At the mouth of the river harbour, impose two UNESCO World Heritage monuments, Jeronimos monastery and Belem tower. The Alfama hillside is also worth visiting: known for its fado bars and its Moorish streets, this district is the oldest one of the city and one of the most typical. Not far from there, Chiado's elegant streets are home to big fashion labels and are an invitation to a bit of of luxury shopping.

### Day 2 LEIXÕES - PORTO

Wild Earth Travel

*Small Ships, Big Adventures*

**0800 945 3327** (within New Zealand) | +64 (0) 3 365 1355 | **1800 107 715** (within Australia)

info@wildearth-travel.com | **wildearth-travel.com**





# Wild Earth Travel

*Small Ships, Big Adventures*

**wildearth-travel.com**

**info@wildearth-travel.com**

## Day 5 BILBAO

Located at the mouth of the Douro River, the port of Leixoes lies less than 10 kilometres from Porto. A UNESCO World Heritage Site, the historic centre of Porto is worth a visit for its famous Ribeira district, the metallic silhouette of the Dom-Luis bridge looming over its ancient houses, its richly decorated Baroque churches and its national Soares dos Reis museum. The Sao Bento station is also interesting for its typically Portuguese decoration, using Azulejos, blue square ceramic tiles decorated with geometric patterns or figurative scenes.

## Day 3 VIGO – SANTIAGO DE COMPOSTELA

Nestling on the Atlantic coast, in the south of Galicia, the former fishing port of Vigo is now the region's largest municipality. Its old town, more commonly known as O Berbes, will unveil its many historical monuments and the unusual architectural style of its homes. Off the coast, the Cies Islands, declared a Nature Reserve and located in the Atlantic Islands of Galicia National Park, offer truly splendid landscapes and exceptional biodiversity. Further north, make sure you visit Santiago de Compostela, which welcomes many pilgrims from all over the world every year. Designated a UNESCO World Heritage Site, its historical centre has significant architectural heritage.

## Day 4 AT SEA

During your journey at sea, make the most of the many services and activities on board. Treat yourself to a moment of relaxation in the spa or stay in shape in the fitness centre. Depending on the season, let yourself be tempted by the swimming pool or a spot of sunbathing. This journey without a port of call will also be an opportunity to enjoy the conferences or shows proposed on board, depending on the activities offered, or to do some shopping in the boutique or to meet the PONANT photographers in their dedicated space. As for lovers of the open sea, they will be able to visit the ship's upper deck to admire the spectacle of the waves and perhaps be lucky enough to observe marine species. A truly enchanted interlude, combining comfort, rest and entertainment.

Bilbao, capital of the Spanish Basque country, is one of the most avant-garde cities in Europe. Its architectural audacity as well as its ancient built heritage will take you on a journey between traditions and innovations. An unusual cable car will allow you to reach the magnificent Guggenheim Museum, a unique construction of stone, glass and titanium, designed by the architect Frank Gehry and home to a collection of modern art and contemporary monumental sculpture. The narrow streets of the old city and the unmissable Ensanche district are also worthy of a visit, as is the Vizcaya bridge, the world's first ever transporter bridge, a UNESCO World Heritage Site.

## Day 6 AT SEA

During your journey at sea, make the most of the many services and activities on board. Treat yourself to a moment of relaxation in the spa or stay in shape in the fitness centre. Depending on the season, let yourself be tempted by the swimming pool or a spot of sunbathing. This journey without a port of call will also be an opportunity to enjoy the conferences or shows proposed on board, depending on the activities offered, or to do some shopping in the boutique or to meet the PONANT photographers in their dedicated space. As for lovers of the open sea, they will be able to visit the ship's upper deck to admire the spectacle of the waves and perhaps be lucky enough to observe marine species. A truly enchanted interlude, combining comfort, rest and entertainment.

## Day 7 BORDEAUX

Bordeaux stretches along the banks of the Garonne river, in South-West France. Its rich wine tradition makes it the world capital of wine. Let yourself be carried away by the history of the Port de la Lune, made a UNESCO World Heritage site for its prestigious classical architecture. On the famous Place de la Bourse, the past and the present unite: here you can observe the majestic old buildings reflected in the contemporary Miroir d'eau creation.

Wild Earth Travel

*Small Ships, Big Adventures*

**0800 945 3327** (within New Zealand) | +64 (0) 3 365 1355 | **1800 107 715** (within Australia)

info@wildearth-travel.com | **wildearth-travel.com**



# Wild Earth Travel

*Small Ships, Big Adventures*

**wildearth-travel.com**

**info@wildearth-travel.com**

## Day 8 TALMONT-SUR-GIRONDE

You will sail along the coast to discover the remarkable Meschers caves, natural cavities carved into the chalk cliffs that loom over the Gironde estuary. Enlarged by man in the 19th century, they became troglodyte dwellings, some of which are still inhabited today. Punctuating the coastline of the Charente region with their poetic presence, the carrelets, fragile-looking huts on stilts fitted with a square fishing net, can be seen along the Saintonge coastline. The beautiful town of Talmont-sur-Gironde is to be found at the heart of the fortified city founded by Edward I, King of England and Duke of Aquitaine. The Sainte-Radegonde church, a jewel of Romanesque art, dating from the 12th century, looms majestically over the estuary.

## Day 9 QUIBERON

Welcome to the Quiberon peninsula in the Morbihan, Brittany's wild and contrasting landscape. On the Atlantic Ocean side, you will see stretches of wild coastline with rugged, windswept cliffs, and on the Quiberon Bay side, long sandy beaches overlooking emerald waters. Port Haliguen, a ten-minute walk from Quiberon, is a marina that has retained all its charms of yesteryear.

## Day 10 DOUARNENEZ

Nestling in the hollow of a pretty bay in the Finistere department which smells nicely of sea spray, Douarnenez bears both its Breton identity and its reputation as an important sardine port as a source of pride. The surrounding grandiose nature, with its wild coastlines and fine sandy beaches, offers a fine setting with the crystal-clear waters of the ocean. You'll enjoy a walk to take in the atmosphere of its lively quays and discover fishermen's houses of picturesque charm as you stroll through its small streets. You'll then visit Locronan, listed as one of "the most beautiful villages of France". The granite city, with its fine Renaissance-era houses, found fame as a setting for the films Tess, by Roman Polanski, and Chouans!, by Philippe de Broca.

## Day 11 CHERBOURG

Lying at the tip of the Cotentin peninsula, between the Channel and the bocage, Cherbourg is the figurehead of a wild and secret region, dear to the heart of Jacques Prevert. The installation of La Cité de la Mer maritime museum in 2002, within the former transatlantic terminal, rejuvenated the maritime and military port. You'll enjoy the ambiance of this charming town, with its shale façades, which was celebrated by Jacques Demy in The Umbrellas of Cherbourg. Your exploration will also bring you to the foot of the Chateau de Vauville, famed for its extraordinary Botanical Gardens. Like an oasis, this small southern paradise is home to more than 1,000 tropical species collected by the family of Éric Pellerin, botanist and perfumer since 1948.

## Day 12 HONFLEUR

A treasure of the Cote Fleurie, Honfleur is located on the edge of la Crique de Rouen in Normandy. You will no doubt admire the historical ships moored in its old port. With its tall, slate-covered houses, the quays provide a great setting for a very nice walk. In the streets behind the harbour, you will see many timber houses. These picturesque places were the cradle of several pre-impressionist painters. You can see their works in the Eugene Boudin museum. Exhibited works represent scenes of medieval streets and the coastline as it used to be, as illustrated by the Butin beach and its lush green hillsides.

### Please Note:

Itineraries are subject to change.

**Wild Earth Travel**

*Small Ships, Big Adventures*

**0800 945 3327** (within New Zealand) | +64 (0) 3 365 1355 | **1800 107 715** (within Australia)

info@wildearth-travel.com | **wildearth-travel.com**





# Wild Earth Travel

*Small Ships, Big Adventures*

**wildearth-travel.com**

**info@wildearth-travel.com**

## YOUR SHIP: L'AUSTRAL

<b>YOUR SHIP:</b>	<b>L'Austral</b>
<b>VESSEL TYPE:</b>	<b>Luxury Expedition / Cruise Ship</b>
<b>LENGTH:</b>	<b>142 metres</b>
<b>PASSENGER CAPACITY:</b>	<b>264 (200 in Antarctica)</b>
<b>BUILT/REFURBISHED:</b>	<b>2011</b>

This superb mega-yacht with 132 cabins is the result of the expertise of the Italian Fincantieri shipyard and French sophistication, as interpreted by designer Jean-Philippe Nuel. L'Austral has a unique atmosphere, a subtle blend of luxury, intimacy and well-being.

A sleek silhouette softened by elegantly smooth contours and large, arched windows opening up to the sea and the light: so many features come together to give L'Austral her distinctive shape. Precious materials, discreet elegance and a perfect balance between chic and casual, combine to make you feel as if you are on your own private yacht. A design blending tradition and innovation, where a nautical mood has been subtly recreated. Precious materials in smoothing neutral tones are brought to life with splashes of cheerful reds. So many personal touches create the spirit of a "private yacht".

### Cuisine

Loyal to the great French tradition, the haute cuisine on board is worthy of the finest restaurants, where discreet, attentive service is the hallmark.

Our two restaurants welcome you for breakfasts, lunch and dinner. The Gastronomic Restaurant, with a capacity of 268

persons, is situated on Le Liberte Deck and serves you French and international cuisine accompagnied by fine wine. On the Grill Restaurant, you will have the opportunity to eat outside and enjoy buffet lunch and themed dinner.

### Life On Board

Whether you want to join other guests in the theatre or games area (Wii™ consoles, etc), or relax on your own in a quiet corner of the library, L'Austral has been designed to meet the needs of every guest.

Everything has been done to preserve the independence of each guest to suit their personal tastes: lounges for lectures and shows, a spa in partnership with Sothys™, but also more intimate spaces such as the library and internet corner. Comfortable cabins, nearly all with private balcony, are available for families either as triples or as communicating cabins. There is also a games area with Wii™ consoles, children's menus, and a baby-sitting service. Just as if you were on a private yacht, your time is your own to do as you please.

Fitted with the latest equipment (Kinesis Wall, running machine) and in partnership with the famous

Sothys™ brand, the Beauty Centre on L'Austral welcomes you for some unforgettable moments of relaxation and pampering (beauty treatments, hairdresser).



Wild Earth Travel

*Small Ships, Big Adventures*

**0800 945 3327** (within New Zealand) | +64 (0) 3 365 1355 | **1800 107 715** (within Australia)

info@wildearth-travel.com | wildearth-travel.com



# Wild Earth Travel

*Small Ships, Big Adventures*

**wildearth-travel.com**

**info@wildearth-travel.com**

irdresser).

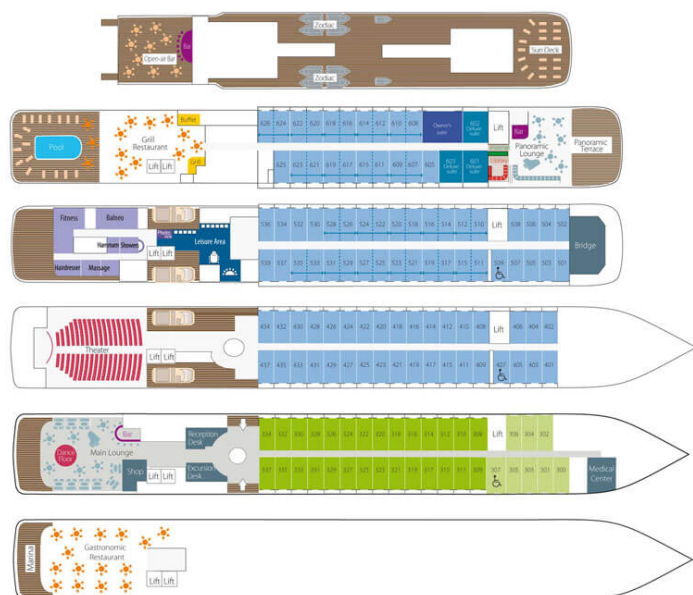
**Wild Earth Travel**  
*Small Ships, Big Adventures*

**0800 945 3327** (within New Zealand) | +64 (0) 3 365 1355 | **1800 107 715** (within Australia)

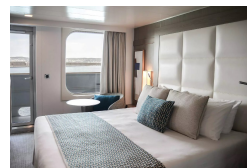
info@wildearth-travel.com | **wildearth-travel.com**



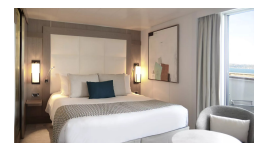
## INSIDE YOUR SHIP



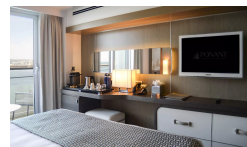
Deluxe Stateroom



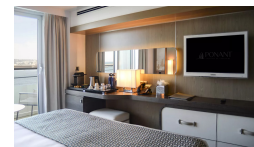
Deluxe Suite



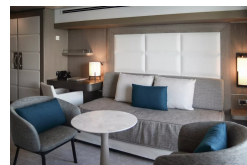
Prestige Deck 4



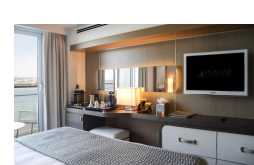
Prestige Deck 5



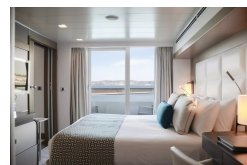
Prestige Deck 5 Suite



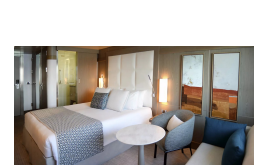
Prestige Deck 6



Prestige Deck 6 Suite



Superior Stateroom





# Wild Earth Travel

*Small Ships, Big Adventures*

**wildearth-travel.com**

**info@wildearth-travel.com**

## PRICING

**08-May-2026 to 19-May-2026**

<b>Superior Stateroom</b>	<b>9590 AUD pp</b>
<b>Deluxe Stateroom</b>	<b>10380 AUD pp</b>
<b>Prestige Deck 4</b>	<b>11520 AUD pp</b>
<b>Prestige Deck 5</b>	<b>12090 AUD pp</b>
<b>Prestige Deck 6</b>	<b>12770 AUD pp</b>
<b>Deluxe Suite</b>	<b>17770 AUD pp</b>
<b>Prestige Deck 5 Suite</b>	<b>24030 AUD pp</b>
<b>Prestige Deck 6 Suite</b>	<b>25270 AUD pp</b>

**ADDITIONAL CHARGES:**

**Port Taxes 810 AUD pp**

**Wild Earth Travel**

*Small Ships, Big Adventures*

**0800 945 3327** (within New Zealand) | +64 (0) 3 365 1355 | **1800 107 715** (within Australia)

info@wildearth-travel.com | **wildearth-travel.com**





# Wild Earth Travel

*Small Ships, Big Adventures*

**wildearth-travel.com**

**info@wildearth-travel.com**

## SPECIAL OFFERS

Online prices reflect the current brochure fare savings of up to 30%. Prices may change based on demand. Terms and conditions apply. This special offer is subject to availability. Please contact us for more details.

### Optional extras & upgrades

#### **2 Night Pre Cruise 5 Star Lisbon & Mafra City Stay**

Please enquire for more information

**Wild Earth Travel**

*Small Ships, Big Adventures*

**0800 945 3327** (within New Zealand) | +64 (0) 3 365 1355 | **1800 107 715** (within Australia)

info@wildearth-travel.com | **wildearth-travel.com**