

Wild Earth Travel

Small Ships, Big Adventures

wildearth-travel.com

info@wildearth-travel.com

THE GULF OF BOTHNIA, AT THE GATEWAY TO THE ARCTIC - LUXURY EXPEDITION

It 's raining stars in our bed. This sensitive evocation of the Arctic night, which is the title of Scandinavian poetry collection, invites us to the best seats in the house to watch the union between the vault of heaven and the earth's crust, beneath a multitude of stars. In the delicious comfort of _Le Commandant Charcot,_ experience winter at the gateway to the Arctic , admire the spectacle of the Gulf of Bothnia, between enchanted landscapes and traditions, and from the Stockholm Archipelago discover a magical world in half-light. Experience the period of Kaamos , the polar night, during which luminosity is reduced to a twilight of 4 to 5 hours per day, representing everyday life for the local population.



ITINERARY

Day 1 - Helsinki

Seated in the southern peninsula of Finland, Helsinki offers the buzz of a cosmopolitan city that has opted for both elegance and beauty. Explore its historical centre where the soft hues of neoclassical buildings are juxtaposed with spectacular modern constructions. The bustling Kallio district is teeming with boutiques and restaurants where you can taste some local specialities like graavilohi - a sweet, marinated, aromatic salmon dish. Keskuspuisto park, a stone's throw from the centre, is a good place to sit and unwind.

Days 2 - 3 - Stockholm

The capital of Sweden occupies an archipelago in the east of the country at

Wild Earth Travel

Small Ships, Big Adventures

0800 945 3327 (within New Zealand) | +64 (0) 3 365 1355 | **1800 107 715** (within Australia)

info@wildearth-travel.com | wildearth-travel.com

Wild Earth Travel

Small Ships, Big Adventures



wildearth-travel.com

info@wildearth-travel.com

the junction of Malar Lake and the Baltic sea. In Gamla stan, meaning "old town" in Swedish, you can stroll at your leisure in picturesque medieval streets until you reach the majestic Royal Palace. On the green island of Djurgården, you can visit several very different kinds of cultural centres: the Vasa museum is dedicated to a 17th century three-masted, the ecomuseum of Skansen presents traditional customs, and the ABBA museum is dedicated to the legendary pop group. For a fantastic, all-encompassing view of Stockholm, you can take a ride in SkyView, a glass-encased sphere gondola that takes you to the top of the world's largest building, the Ericsson Globe, a Stockholm landmark.

Day 4 - Rauma

Stretching for 500 km (310 miles), the western coast of Finland is dotted with historic towns founded at the height of the Swedish Empire. Rauma, a UNESCO World Heritage Site, tells part of this exciting history. The old town is built around a Franciscan monastery, the remains of which are the Church of The Holy Cross dating back to the middle of the 15th century. Stroll the streets and alleyways of this medieval city and discover an exceptionally well-preserved example of traditional Nordic wood construction techniques. At the Marela Museum, a fine ship-owner's home, you will dive into the town's maritime and industrial history and be able to immerse yourselves in the day-to-day life of a wealthy 19th-century merchant.

Day 5 - At sea aboard Le Commandant Charcot

Spend exceptional moments sailing aboard Le Commandant Charcot, the world's first luxury polar exploration vessel and the first PC2-class polar cruise ship capable of sailing into the very heart of the ice, on seas and oceans which the frozen conditions render inaccessible to ordinary ships. Le Commandant Charcot is fitted with oceanographic and scientific equipment selected by a committee of experts. Take advantage of the on-board lectures and opportunities for discussion with these specialists to learn more about the poles. Participate in furthering scientific research with PONANT and let us discover together what these fascinating destinations have yet to reveal to us.

Day 6 - Lulea

Tucked away at the back of the Gulf of Bothnia, Lulea is the perfect departure point for exploring Swedish Lapland. Among the excursion opportunities, you

will be able to go deep into the forest on a snowmobile or on snowshoes to attempt to glimpse a moose or a black grouse. Unless, of course, you would prefer to enjoy some ice fishing on a frozen lake. The Lappish night often offers an unforgettable spectacle of stars. In Gammelstad, discover the best-preserved example of a unique type of settlement found in northern Scandinavia, the church-town. Wander through the alleyways of the old town by lantern light and observe its 424 brick-red houses constructed around the stone church, which dates back to the beginning of the 15th century. Used in the past on days of worship and on religious holidays by the faithful arriving from the surrounding countryside, they are still used today as *pieds-a-terre* by families during ecclesiastical events.

Day 7 - Oulu

The bells are ringing, the snowflakes are whirling around in the air and the lights are illuminating the charming city of Oulu - the largest town in the north of Scandinavia, located 150 km (93 miles) from the Arctic Circle. On the edge of the Oulujoki River, the market square (Kauppatori) will tempt you with its stalls. The wooden houses that are home to cafes and restaurants make for reassuring refuges. Around you, the white kingdom awaits, with its snow-covered beaches and the promise of fabulous sunsets. Choose to go snowshoeing or on a nature excursion and become aware that you are breathing the purest air in Europe. Enter the tranquillity of the forest and familiarise yourself with Scandinavia's emblematic animal, the reindeer, of course, during a visit to a farm.

Days 8 - 9 - Kemi

Kemi reveals itself in the Gulf of Bothnia as, from the snow-covered shores of Finnish Lapland, you enjoy the pleasures of winter. The ephemeral snow castle will welcome you in an enchanted icy setting, and the bracing air will take hold of you during a snowmobile outing or a sled trip, pulled by huskies or reindeer - your choice. Around a hundred kilometres (60 miles) towards the North, on the mythical line of the Arctic Circle, the Santa Claus Village of Rovaniemi offers a magical discovery from a child's eye view. In the heart of these preserved landscapes, the Scandinavian culture has been forged since the Stone Age, between the History and the traditions of the people of the Far North.

Please note:

Wild Earth Travel

Small Ships, Big Adventures

0800 945 3327 (within New Zealand) | +64 (0) 3 365 1355 | **1800 107 715** (within Australia)

info@wildearth-travel.com | **wildearth-travel.com**



Wild Earth Travel

Small Ships, Big Adventures



wildearth-travel.com

info@wildearth-travel.com

The itinerary may be altered based on port approvals and to comply with applicable government regulations. Please also note that the sailing programme, shore visits and activities cannot be guaranteed, as they are subject to weather conditions.

Wild Earth Travel

Small Ships, Big Adventures

0800 945 3327 (within New Zealand) | +64 (0) 3 365 1355 | **1800 107 715** (within Australia)

info@wildearth-travel.com | **wildearth-travel.com**

Wild Earth Travel

Small Ships, Big Adventures



wildearth-travel.com

info@wildearth-travel.com

YOUR SHIP: LE COMMANDANT-CHARCOT

YOUR SHIP:	Le Commandant-Charcot
VESSEL TYPE:	Polar Luxury Expedition
LENGTH:	149.9 meters
PASSENGER CAPACITY:	135 cabins
BUILT/REFURBISHED:	2018/2019

Be the first aboard Le Commandant-Charcot, the world's luxury polar exploration vessel, and enjoy a unique sailing experience in the Arctic or Antarctic!

With its hybrid propulsion combining liquefied natural gas (LNG) and electric generators, Le Commandant-Charcot has been designed to minimise the environmental impact of travel to the furthest latitudes.

The decoration of the ship, imagined by two internationally renowned design and architecture firms - the studio of Jean-Philippe Nuel and Wilmotte & Associates - is designed to be in harmony with the environment. The approach is contemporary with the desire to create a warm and elegant setting; stone, wood and leather recall the natural environment in which the ship is sailing.

Equipped with just 135 staterooms including 31 suites with balconies and outside views, Le Commandant-Charcot welcomes you in an intimate and refined atmosphere. Outstanding gastronomy in the two restaurants, relaxation in the indoor pool surrounded by its winter garden, relaxation in the well-being area with sauna and Snow Room... Like on a private yacht, each of our guests is unique.

PUBLIC AREAS

Le Commandant-Charcot has many common areas that are designed and equipped to meet all of your needs while preserving the intimacy of each passenger.

A 177 m² reception area includes: A reception/concierge desk, An expeditions desk, The ship's administrative services, The sales office, manned by our Hospitality & Travel Manager officer, Our boutique which sells clothing, jewellery, beauty products, postcards and various accessories, The image & photo desk.

The different lounges: A 302 m² main lounge including a 28 m² cigar lounge, a tea corner and a bar, with live music on selected evenings, A 400 m² panoramic bar and lounge, An open-air Bar. The recreation spaces

Fitness & Beauty Corner: Fitness room: Elliptic, running machines, bicycles...

Beauty Corner: Hairdresser, Massage rooms, Sauna, Snow Room, Nail Shop.

Pool area: Indoor Pool and winter garden - Outdoor Pool

Theatre: Capacity: 270-276 - Main show room for conferences and live entertainment on selected evenings - State-of-the-art audio and video technology.

Leisure area: Public areas - Library - Medical centre.

16 Zodiac®.

Wild Earth Travel

Small Ships, Big Adventures

0800 945 3327 (within New Zealand) | +64 (0) 3 365 1355 | **1800 107 715** (within Australia)

info@wildearth-travel.com | **wildearth-travel.com**



Wild Earth Travel

Small Ships, Big Adventures



wildearth-travel.com

info@wildearth-travel.com



16 Zodiac®.



Wild Earth Travel

Small Ships, Big Adventures

0800 945 3327 (within New Zealand) | +64 (0) 3 365 1355 | **1800 107 715** (within Australia)

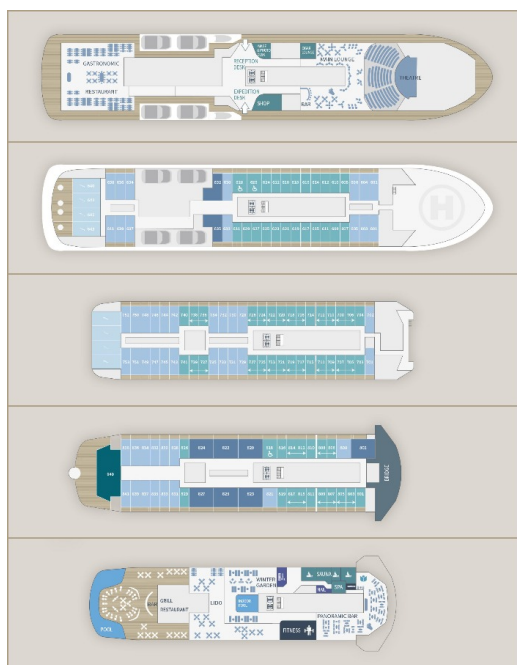
info@wildearth-travel.com | **wildearth-travel.com**



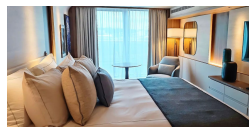
wildearth-travel.com

info@wildearth-travel.com

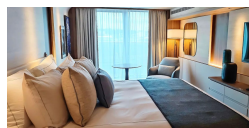
INSIDE YOUR SHIP



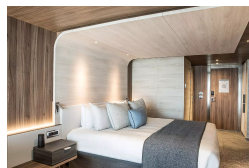
Deluxe Suite Deck 6



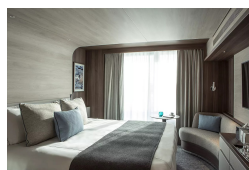
Deluxe Suite Deck 8



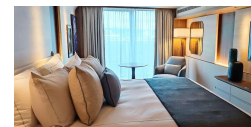
Grand Prestige Suite



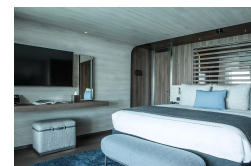
Prestige Stateroom Deck 7



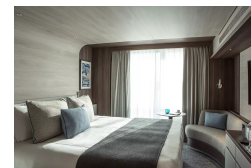
Deluxe Suite Deck 7



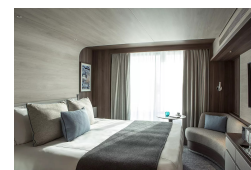
Duplex Suite



Prestige Stateroom Deck 6



Prestige Stateroom Deck 8



Wild Earth Travel

Small Ships, Big Adventures

wildearth-travel.com

info@wildearth-travel.com

PRICING

22-Dec-2026 to 30-Dec-2026

Prestige Stateroom Deck 6	16110 AUD pp
Prestige Stateroom Deck 7	16400 AUD pp
Prestige Stateroom Deck 8	16690 AUD pp
Deluxe Suite Deck 6	17140 AUD pp
Deluxe Suite Deck 7	17860 AUD pp
Deluxe Suite Deck 8	18450 AUD pp
Prestige Suite Deck 7	23410 AUD pp
Prestige Suite Deck 8	24140 AUD pp
Grand Prestige Suite	24870 AUD pp
Privilege Suite Deck 8	26320 AUD pp
Duplex Suite	35810 AUD pp

30-Dec-2026 to 07-Jan-2027

Prestige Stateroom Deck 6	16780 AUD pp
Prestige Stateroom Deck 7	17080 AUD pp
Prestige Stateroom Deck 8	17390 AUD pp
Deluxe Suite Deck 6	17840 AUD pp
Deluxe Suite Deck 7	18610 AUD pp
Deluxe Suite Deck 8	19210 AUD pp
Prestige Suite Deck 7	24400 AUD pp
Prestige Suite Deck 8	25160 AUD pp
Grand Prestige Suite	25930 AUD pp
Privilege Suite Deck 8	27460 AUD pp
Duplex Suite	37370 AUD pp

07-Jan-2027 to 15-Jan-2027

Prestige Stateroom Deck 6	15450 AUD pp
Prestige Stateroom Deck 7	15730 AUD pp
Prestige Stateroom Deck 8	16010 AUD pp
Deluxe Suite Deck 6	16420 AUD pp
Deluxe Suite Deck 7	17120 AUD pp
Deluxe Suite Deck 8	17680 AUD pp
Prestige Suite Deck 7	22420 AUD pp
Prestige Suite Deck 8	23110 AUD pp
Grand Prestige Suite	23800 AUD pp
Privilege Suite Deck 8	25190 AUD pp
Duplex Suite	34250 AUD pp

Wild Earth Travel
Small Ships, Big Adventures

0800 945 3327 (within New Zealand) | +64 (0) 3 365 1355 | **1800 107 715** (within Australia)

info@wildearth-travel.com | wildearth-travel.com

Wild Earth Travel

Small Ships, Big Adventures

wildearth-travel.com

info@wildearth-travel.com

PRICING

15-Jan-2027 to 23-Jan-2027

Prestige Stateroom Deck 6	17970 AUD pp
Prestige Stateroom Deck 7	18310 AUD pp
Prestige Stateroom Deck 8	18630 AUD pp
Deluxe Suite Deck 6	19140 AUD pp
Deluxe Suite Deck 7	19950 AUD pp
Deluxe Suite Deck 8	20610 AUD pp
Prestige Suite Deck 7	26220 AUD pp
Prestige Suite Deck 8	27040 AUD pp
Grand Prestige Suite	27870 AUD pp
Privilege Suite Deck 8	29520 AUD pp
Duplex Suite	40230 AUD pp

Wild Earth Travel

Small Ships, Big Adventures

0800 945 3327 (within New Zealand) | +64 (0) 3 365 1355 | **1800 107 715** (within Australia)

info@wildearth-travel.com | **wildearth-travel.com**