

# Wild Earth Travel

*Small Ships, Big Adventures*

**wildearth-travel.com**

**info@wildearth-travel.com**

## RAJA AMPAT AND THE SPICE ISLANDS - FROM DARWIN TO DARWIN IN LUXURY

Between heavenly islands and unique coral reefs, set sail to explore the legendary "Spice Islands" and Raja Ampat. From Darwin, set a course for the Moluccas and Banda Neira, the cradle of the nutmeg trade, between colonial vestiges and lush jungle. Then explore the Raja Ampat archipelago, a string of more than 1,500 islands and karstic cays rising from the crystal-clear waters of the Coral Triangle. In West Papua, discover the sublime Kiti-Kiti Waterfall before heading to the Kai Islands, a little slice of paradise boasting some of the most beautiful beaches in Indonesia.

Over 12 days, take the time to explore this part of the world and its unique marine biodiversity with expert naturalist guides. A rich history - you will be sailing along the ancient Spice Route - and breathtaking scenery await you, while the seabed will reveal itself during water-based activities.



### ITINERARY

#### Day 1 Darwin

Darwin is located in Australia's Northern Territory which is also known as the "Top End". It is the capital city and the most populated town of the Northern Territory. Darwin is a beautiful tropical city, a melting pot of people and cultures, over 50 different cultures live and work side by side that prides itself in its unique and friendly laid-back lifestyle. Come discover the town's still recent history through its emblematic buildings such as the new Parliament House opened in 1994, a magnificent example of tropical architecture or Admiralty House declared heritage place, a tropical-style home elevated on stilts that has survived two cyclones and numerous air raids.

#### Days 2 - 3 At Sea

Wild Earth Travel

*Small Ships, Big Adventures*

**0800 945 3327** (within New Zealand) | +64 (0) 3 365 1355 | **1800 107 715** (within Australia)

info@wildearth-travel.com | **wildearth-travel.com**



# Wild Earth Travel

*Small Ships, Big Adventures*

**wildearth-travel.com**

**info@wildearth-travel.com**

During your journey at sea, make the most of the many services and activities on board. Treat yourself to a moment of relaxation in the spa or stay in shape in the fitness centre. Depending on the season, let yourself be tempted by the swimming pool or a spot of sunbathing. This journey without a port of call will also be an opportunity to enjoy the conferences or shows proposed on board, depending on the activities offered, or to do some shopping in the boutique or to meet the PONANT photographers in their dedicated space. As for lovers of the open sea, they will be able to visit the ship's upper deck to admire the spectacle of the waves and perhaps be lucky enough to observe marine species. A truly enchanted interlude, combining comfort, rest and entertainment.

## Days 4 - 8 Raja Ampat Islands, West Papua

If you are travelling the world in search for the most beautiful diving spots, you'll find what you're looking for in the Indonesian Raja Ampat islands. Off Sorong, ideally located in the heart of the illustrious "Coral Triangle", the 1,500 or so islets that make up the archipelago are the ideal place for admiring some outstandingly diverse coral reefs. At the junction of the Pacific and Indian oceans, the Raja Ampat islands, covered with lush jungle, are also extraordinary lands for hiking. Between multi-coloured lagoons, immaculate beaches and green landscapes, the Raja Ampat islands offer you a breath-taking palette of colours...

## Day 9 Kitikiti Waterfall, Mommon

North of Triton Bay, in the Indonesian province of West Papua, lie the Bomberai Peninsula and Sebakor Bay. A real paradise for divers, this protected, authentic and very wild area boasts an exceptional biodiversity. Here, you will be able to admire the superb Kitikiti Waterfall where you could enjoy a swim or snorkel surrounded by lush nature, both on land and under water.

## Day 10 Kei Islands, Maluku Islands

The Kei Islands are blessed with kilometres of stunning, yet almost entirely empty, white-sand beaches and a deeply hospitable population. Beneath the mostly Christian facade, Kei culture is fascinatingly distinctive. Local history

holds that ancestors of contemporary Kei islanders came from Bali, part of the expanding Hindu Majapahit kingdom from the western archipelago. Enjoy a day of swimming and snorkelling on an idyllic uninhabited picture postcard tropical island.

## Day 11 At Sea

During your journey at sea, make the most of the many services and activities on board. Treat yourself to a moment of relaxation in the spa or stay in shape in the fitness centre. Depending on the season, let yourself be tempted by the swimming pool or a spot of sunbathing. This journey without a port of call will also be an opportunity to enjoy the conferences or shows proposed on board, depending on the activities offered, or to do some shopping in the boutique or to meet the PONANT photographers in their dedicated space. As for lovers of the open sea, they will be able to visit the ship's upper deck to admire the spectacle of the waves and perhaps be lucky enough to observe marine species. A truly enchanted interlude, combining comfort, rest and entertainment.

## Day 12 Darwin

Darwin is located in Australia's Northern Territory which is also known as the "Top End". It is the capital city and the most populated town of the Northern Territory. Darwin is a beautiful tropical city, a melting pot of people and cultures, over 50 different cultures live and work side by side that prides itself in its unique and friendly laid-back lifestyle. Come discover the town's still recent history through its emblematic buildings such as the new Parliament House opened in 1994, a magnificent example of tropical architecture or Admiralty House declared heritage place, a tropical-style home elevated on stilts that has survived two cyclones and numerous air raids.

## Please note:

Itineraries are subject to change.

Wild Earth Travel

*Small Ships, Big Adventures*

**0800 945 3327** (within New Zealand) | +64 (0) 3 365 1355 | **1800 107 715** (within Australia)

info@wildearth-travel.com | **wildearth-travel.com**

# Wild Earth Travel

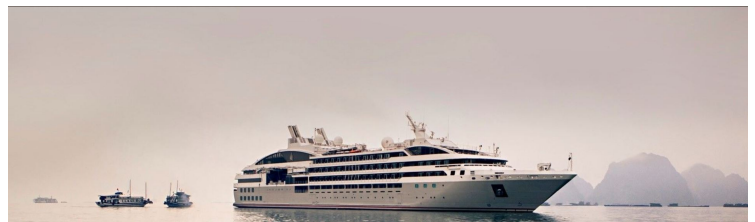
*Small Ships, Big Adventures*

**wildearth-travel.com**

**info@wildearth-travel.com**

## YOUR SHIP: LE SOLEAL

<b>YOUR SHIP:</b>	<b>Le Soleal</b>
<b>VESSEL TYPE:</b>	<b>Luxury Small Ship</b>
<b>LENGTH:</b>	<b>142 metres</b>
<b>PASSENGER CAPACITY:</b>	<b>264</b>
<b>BUILT/REFURBISHED:</b>	<b>2013</b>



Sailing under the French flag, this magnificent yacht of only 132 staterooms and suites, with balconies, joined in 2013. You will be enchanted by the contemporary decor inspired by the luxury yachting world, with fluid lines and a modern colour scheme combining natural wood with shades of grey and white.

A refined ambience is enhanced by the quality of the workmanship and materials: white Corian counters in the lobby contrast with the warmth of leather to recall a boat's hull, while the central sculpture of enamelled pieces takes its inspiration from the sea. In the loungebar, the carpet picks up a tennis stripe theme symbolising a certain idea of cruising, one synonymous with French elegance and a chic seaside spirit.

Wild Earth Travel

*Small Ships, Big Adventures*

**0800 945 3327** (within New Zealand) | +64 (0) 3 365 1355 | **1800 107 715** (within Australia)

info@wildearth-travel.com | **wildearth-travel.com**



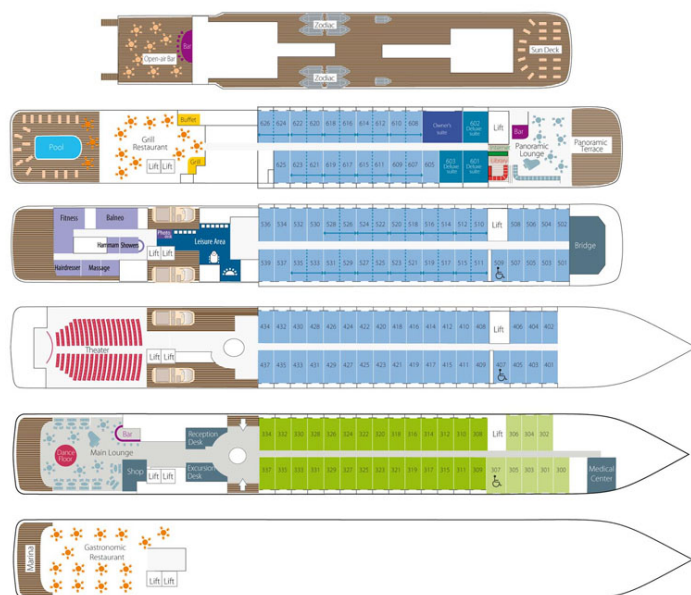
# Wild Earth Travel

*Small Ships, Big Adventures*

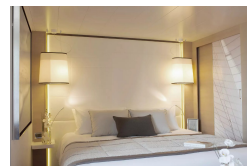
[wildearth-travel.com](http://wildearth-travel.com)

[info@wildearth-travel.com](mailto:info@wildearth-travel.com)

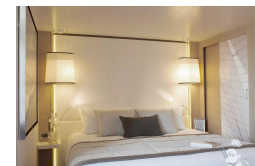
## INSIDE YOUR SHIP



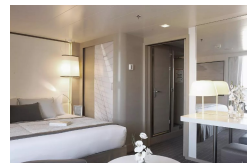
DeLuxe Stateroom



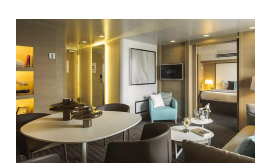
Deluxe Stateroom



Deluxe Suite



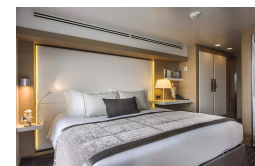
Owner's Suite



Prestige Deck 4



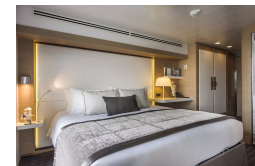
Prestige Deck 5



Prestige Deck 5 Suite



Prestige Deck 6



Wild Earth Travel

*Small Ships, Big Adventures*

0800 945 3327 (within New Zealand) | +64 (0) 3 365 1355 | 1800 107 715 (within Australia)

[info@wildearth-travel.com](mailto:info@wildearth-travel.com) | [wildearth-travel.com](http://wildearth-travel.com)

# Wild Earth Travel

*Small Ships, Big Adventures*

**wildearth-travel.com**

**info@wildearth-travel.com**

## PRICING

### 10-Sep-2025 to 21-Sep-2025

Superior Stateroom	12180 AUD pp
DeLuxe Stateroom	13210 AUD pp
Prestige Stateroom - Deck 4	14670 AUD pp
Prestige Stateroom - Deck 5	15390 AUD pp
Prestige Stateroom - Deck 6	16270 AUD pp
Deluxe Suite	22720 AUD pp
Prestige Suite - Deck 5	30780 AUD pp
Prestige Suite - Deck 6	32400 AUD pp
Owner's Suite	40460 AUD pp

### 17-Sep-2026 to 28-Sep-2026

Superior Stateroom	10790 AUD pp
Deluxe Stateroom	11690 AUD pp
Prestige Deck 4	12970 AUD pp
Prestige Deck 5	13610 AUD pp
Prestige Deck 6	14380 AUD pp
Deluxe Suite	20030 AUD pp
Prestige Deck 5 Suite	27090 AUD pp
Prestige Deck 6 Suite	28490 AUD pp



# Wild Earth Travel

*Small Ships, Big Adventures*

**wildearth-travel.com**

**info@wildearth-travel.com**

## SPECIAL OFFERS

Online prices reflect the current brochure fare savings of up to 30%. Prices may change based on demand. Terms and conditions apply. This special offer is subject to availability. Please contact us for more details.

Wild Earth Travel

*Small Ships, Big Adventures*

**0800 945 3327** (within New Zealand) | +64 (0) 3 365 1355 | **1800 107 715** (within Australia)

info@wildearth-travel.com | **wildearth-travel.com**