

Wild Earth Travel

Small Ships, Big Adventures

wildearth-travel.com

info@wildearth-travel.com

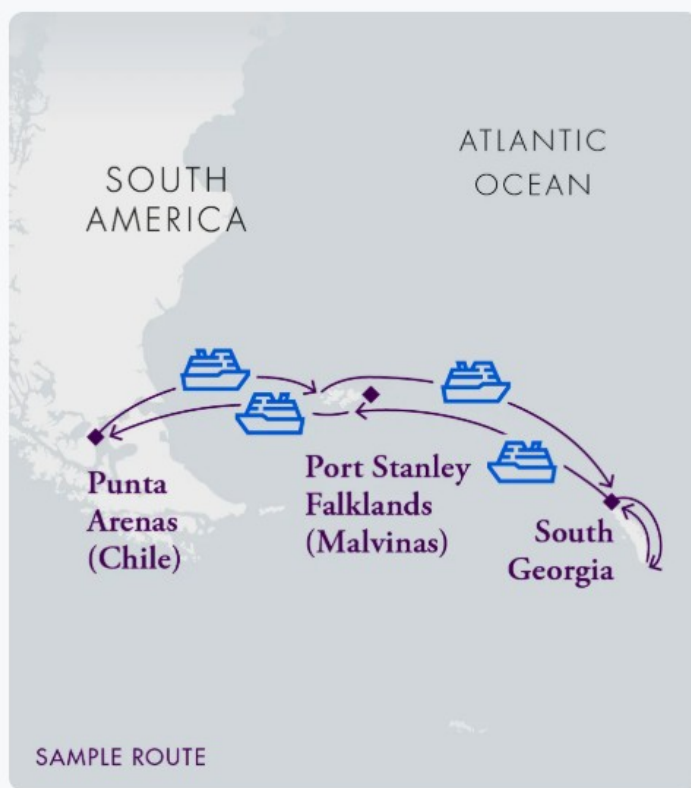
THE FALKLAND ISLANDS (ISLAS MALVINAS) EXPEDITION CRUISE

Set over 300 miles east of Patagonia, the Falkland Islands are in the heart of the South Atlantic Ocean. The islands host an impressive array of wildlife, from the world's largest colony of Black-Browed albatrosses to three species of penguins not found in Antarctica: the golden-haired Rockhopper penguin, the black-banded Magellanic penguin, and the tangerine-cheeked King penguin. Although its proximity to Argentina suggests it was once part of South America, scientists believe the islands were once attached to the African continent. Consequently, this has led to theories that the archipelago's flora and fauna arrived through dispersal.

Home to a similar climate and topography as Tierra del Fuego, the archipelago's two main islands, East Falkland and West Falkland, are the most commonly traversed. Although around 700 more rocky islands and islets make up the archipelago and cover a nearly 4,700 square-mile area.

With a long history of disputes over the land, the Falkland Islands are marked by times of war. France, Spain, and Argentina have all claimed the Falkland Islands at some point throughout history. However, since 1833 the United Kingdom claimed the archipelago as an overseas territory. On the other hand, today, around 3,200 settlers call the capital of Stanley in East Falkland home. Above all, the archipelago's wildlife on land and sea truly set it apart. Creatures like the rare Striated caracara are often sighted circling above the area's rocky coastline. Similarly, marine mammal species like Elephant seals, Fur seals, and Peale's dolphins swim throughout the kelp

forests of the icy South Atlantic waters.



tic waters.

ITINERARY

Day 1: Punta Arenas, Embarkation

Wild Earth Travel

Small Ships, Big Adventures

0800 945 3327 (within New Zealand) | +64 (0) 3 365 1355 | **1800 107 715** (within Australia)

info@wildearth-travel.com | **wildearth-travel.com**

Wild Earth Travel

Small Ships, Big Adventures

wildearth-travel.com

info@wildearth-travel.com

From 10:00 hrs, make your way to Explorers House in Punta Arenas and enjoy the facilities. At 15:00 hrs, a group transfer will take you to the port for embarkation. As we sail along the Strait of Magellan, our Expedition Team will introduce the history of this fabled sea route.

Day 2: At Sea

Enjoy the ship's amenities and on board program as we make our way to the Falklands (Malvinas). Our engaging series of lectures and presentations begins.

Days 3: Saunders Island, West Point Island

We enjoy the long white-sand beach during a morning visit to Saunders Island. A wilderness experience, the main attractions are rockhopper penguins, nesting black-browed albatross, and sub-Antarctic gentoo penguins. In the afternoon, we visit West Point Island. There is an option for an easy hike to a nesting black-browed albatross colony, bird watching, and a typical Falklands tea experience.

Day 4: Port Stanley

Join our expedition team on guided walking tours of Port Stanley. Or explore on your own and absorb the atmosphere, grabbing lunch at the local pub, visiting the maritime museum, the church, hunting for souvenirs, or walking down Ross Road, paying tribute at the war memorials at the waterfront.

Day 5-6: At Sea

As we sail towards South Georgia, attend presentations on the history and fauna of the archipelago. In the company of expert guides, watch for wildlife from the lounge or from the outside decks. You may spot magnificent seabirds, such as albatrosses and petrels, as well as different species of whales.

Day 7: Elsehul Bay

Depending on sea conditions over the previous days, arrival is planned for the afternoon. Provided we receive approval from the South Georgia government, we plan to do an evening Zodiac cruise at Elsehul Bay.

Day 8: Grytviken, Fortuna Bay

Our first landing could be at Grytviken. We clear Customs and then visit the historical site with the museum and Ernest Shackleton's grave. We land at Fortuna Bay / Stromness in the afternoon to see king penguins. Here, we learn more about Shackleton and his expedition, and there is also an optional 2-3 hour "Shackleton walk."

Day 9: Gold Harbour, Drygalsky Fjord

In the morning, we plan a landing at Gold Harbour, a spectacular location with king penguins, elephant seals, and hanging glaciers. There are also sooty albatrosses here. If weather allows, we ship cruise across the Drygalsky Fjord in the afternoon.

Day 10: St Andrews Bay, Ocean Harbour

St Andrews Bay is the destination of our morning excursion. The highlights here are a shipwreck and the remains of the whaling industry. We see one of the world's largest king penguin colonies and elephant seal bulls. We plan a Zodiac cruise in the afternoon and landing at Ocean Harbour.

Day 11: Salisbury Plain

Depending on weather conditions, we plan to visit Salisbury Plain to observe more king penguins and stunning landscapes. After this morning activity, we

Wild Earth Travel

Small Ships, Big Adventures

0800 945 3327 (within New Zealand) | +64 (0) 3 365 1355 | **1800 107 715** (within Australia)

info@wildearth-travel.com | wildearth-travel.com



Wild Earth Travel

Small Ships, Big Adventures



wildearth-travel.com

info@wildearth-travel.com

start our way back to the Falkland Islands.

Day 12-14: At Sea

Our education program continues as we make our way back to the Falkland Islands (Islas Malvinas).

Day 15: Bleaker Island

Evening landing at Bleaker Island, a natural reserve famous for its large variety of birds.

Day 16: At Sea

Day 17: Punta Arenas, Disembarkation

Upon arrival at Punta Arenas, we disembark and take a group transfer to the town center, where the expedition will end. Explorers House remains available to you for the day.

Please Note:

Itineraries are subject to change.



Wild Earth Travel

Small Ships, Big Adventures

0800 945 3327 (within New Zealand) | +64 (0) 3 365 1355 | **1800 107 715** (within Australia)

info@wildearth-travel.com | **wildearth-travel.com**



Wild Earth Travel

Small Ships, Big Adventures

wildearth-travel.com

info@wildearth-travel.com

YOUR SHIP: MAGELLAN EXPLORER

YOUR SHIP:	Magellan Explorer
VESSEL TYPE:	Expedition
LENGTH:	90.7 m - 298 ft.
PASSENGER CAPACITY:	100 (only 69 passengers for Air-Cruise operations)
BUILT/REFURBISHED:	2018

MV Magellan Explorer features 50 passenger suites and cabins in five categories of accommodation, including dedicated single cabins. The cabins are very spacious, ranging in size from 40 m² (440 sq. ft.) to 20 m² (220 sq. ft.). All double cabins have two twin beds that can be configured as one queen-size bed, offering great flexibility to our guests. 42 cabins feature a large window and a private balcony, while 8 cabins feature a porthole. All cabins feature a private bathroom and a sitting area.

Public areas include a large, forward-facing observation lounge, an observation deck, a dining room that accommodates all guests and expedition staff in a single sitting, two meeting rooms, a gift shop, a protected outdoor barbecue area, a gym, and a sauna. The bow of the ship is accessible to guests to offer expansive views during exploration. Optional adventure activities, such as kayaking and snowshoeing, are available.

Specific measures have been taken to minimize MV Magellan Explorer's carbon footprint, including state-of-the-art engines that meet MARPOL's stringent Tier III emission standards. To minimize fuel consumption, a waste heat recovery system

recycles the heat produced by the ship's engines and repurposes it to power the ship's heating system and to warm the water used on board.



d on board.

Wild Earth Travel
Small Ships, Big Adventures

0800 945 3327 (within New Zealand) | +64 (0) 3 365 1355 | **1800 107 715** (within Australia)

info@wildearth-travel.com | **wildearth-travel.com**

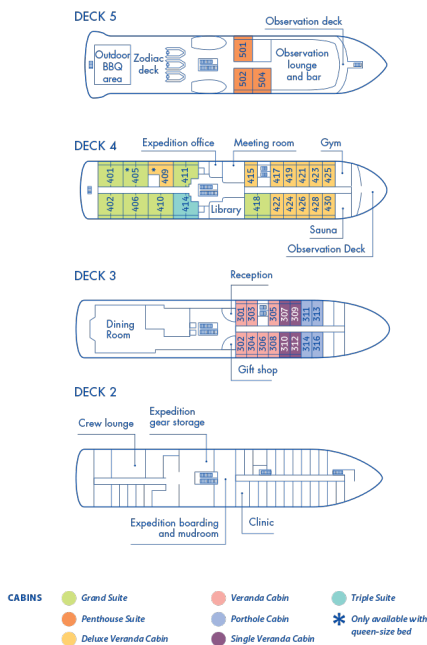
Wild Earth Travel

Small Ships, Big Adventures

wildearth-travel.com

info@wildearth-travel.com

INSIDE YOUR SHIP



Deluxe Veranda Cabin



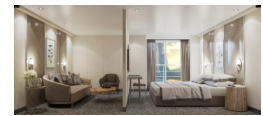
PH Suite



Porthole Cabin



Suite



Triple Suite



Veranda Cabin



Wild Earth Travel
Small Ships, Big Adventures

0800 945 3327 (within New Zealand) | +64 (0) 3 365 1355 | 1800 107 715 (within Australia)

info@wildearth-travel.com | wildearth-travel.com



Wild Earth Travel

Small Ships, Big Adventures



wildearth-travel.com

info@wildearth-travel.com

PRICING

26-Sep-2026 to 12-Oct-2026

Porthole Cabin	10995 USD pp
Veranda Cabin	13495 USD pp
Deluxe Veranda Cabin	14495 USD pp
PH Suite	15995 USD pp
Triple Suite	16995 USD pp
Suite	25990 USD pp

12-Oct-2026 to 28-Oct-2026

Porthole Cabin	10995 USD pp
Veranda Cabin	13495 USD pp
Deluxe Veranda Cabin	14495 USD pp
PH Suite	15995 USD pp
Triple Suite	16995 USD pp
Suite	25990 USD pp

Wild Earth Travel
Small Ships, Big Adventures

0800 945 3327 (within New Zealand) | +64 (0) 3 365 1355 | **1800 107 715** (within Australia)

info@wildearth-travel.com | **wildearth-travel.com**