

Wild Earth Travel

Small Ships, Big Adventures

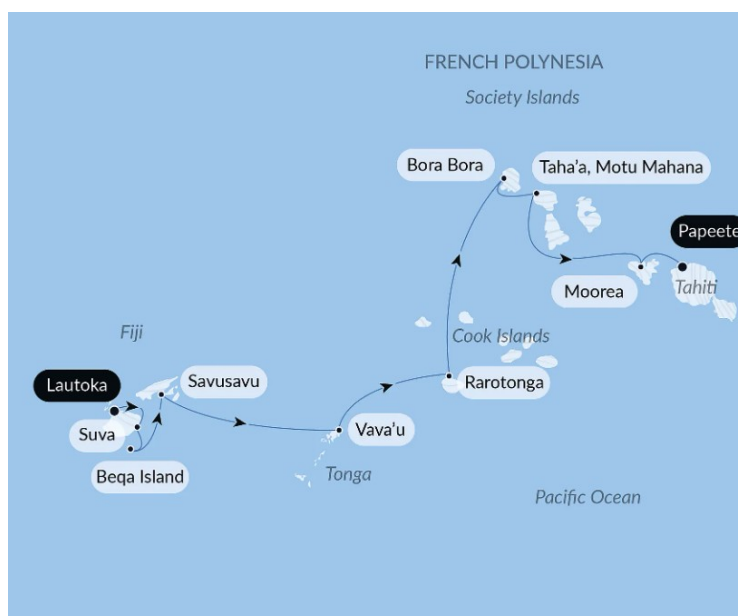
wildearth-travel.com

info@wildearth-travel.com

THE ARCHIPELAGOS AND ANCESTRAL CULTURES OF THE SOUTH PACIFIC

Archipelagos emerge in the immensity of the South Pacific, lost between an enchanted ocean and a captivating sky. Fiji, Tonga, Cook Islands, French Polynesia... These legendary lands, shrouded in secrecy, unveil their greatest mysteries. Between crystal-clear lagoons and volcanic mountains draped in greenery, each horizon reveals a promise of pristine landscapes, vibrant traditions and timeless moments.

As you sail to the different ports of call, you will fall under the spell of the turquoise water in the lagoons in which Manta rays and other tropical fish glide around. The infinite beaches, edged with palm trees and bathed in light, offer limitless serenity. The singing and dancing in the villages recount the history of these communities, who remain guardians of an intact culture. Between the quiet waters of Motu Mahana, the wild shores of Rarotonga and the majestic silhouettes of Moorea, each moment is bewitching. While the scent of Tahitian flowers floats in the air, the golden glow dusk lights up the landscapes, thus transforming each instant into a unique moment.



ITINERARY

Day 1 - Lautoka, Viti Levu Island

Lautoka is the second largest city of Fiji. Located on the western side of the island of Viti Levu, 24 kilometres north of Nadi. Lying in the heart of Fiji's sugar cane growing region, it is known as the Sugar City. Lautoka is the gateway to Fiji's "Sun coast" a land of abundant sunshine, azure skies and dramatic grass-covered peaks chequered with sugar-cane fields, rural villages and quaint market towns.

Day 2 - Suva, Viti Levu Island

Viti Levu, the largest island in Fiji, is teeming with natural and cultural richness. Dominated by Mount Tomanivi, the island is covered with dense and luxuriant

Wild Earth Travel

Small Ships, Big Adventures

0800 945 3327 (within New Zealand) | +64 (0) 3 365 1355 | **1800 107 715** (within Australia)

info@wildearth-travel.com | **wildearth-travel.com**

Wild Earth Travel

Small Ships, Big Adventures



wildearth-travel.com

info@wildearth-travel.com

tropical vegetation to the south and vast sugar cane plantations to the north. Suva, the modern and dynamic capital of Fiji, is home to the historical heritage of the islands. In Thurston Gardens, the Fiji Museum showcases the magnificent collections of archaeological objects, illustrating human activity for more than 3,000 years. Whether under the green and luminous highlights of the vertiginous forest canopy or under the turquoise waters of the Beqa lagoon, exploring the natural treasures of Viti Levu is an unforgettable experience.

Day 3 - Beqa Island

Just a few kilometres from Viti Levu, the small and remote island of Beqa (pronounced "Benga") offers a concentrated dose of Fiji's cultural and natural treasures. Its inhabitants continue the impressive ancestral tradition of fire walking, or Vilavilavevo. During demonstrations, they invite us to watch these ceremonies where barefooted men, prepared and dressed for the occasion in traditional costume, walk over red-hot coals. Legend says that they also have the power to heal burns. The coral reef so close to the beach is the promise of unforgettable underwater excursions. Further out to sea, the sumptuous seabeds are reputed to be home to many species of sharks.

Day 4 - Savusavu, Vanua Levu Island

Receiving fewer visitors than its neighbour Viti Levu, lying some sixty kilometres to the south, Vanua Levu is the second largest island of Fiji. From Savusavu, set out to discover some of the many treasures of this mountainous island and its luxuriant vegetation. You will be enchanted by the fragrances and intense colours of its tropical rainforest, which hides sumptuous and refreshing waterfalls. You will be charmed by the hospitality of the Fijian people. Among the local traditions, there is the famous kava ceremony, where a drink made from a plant similar to the pepper plant is served in half a coconut shell. Snorkelling fans will be delighted by the beauty of the underwater world, renowned for its incredible visibility.

Day 5 - At sea

During your journey at sea, make the most of the many services and activities on board. Treat yourself to a moment of relaxation in the spa or stay in shape in the fitness centre. Depending on the season, let yourself be tempted by the swimming pool or a spot of sunbathing. This journey without a port of call will

also be an opportunity to enjoy the conferences or shows proposed on board, depending on the activities offered, or to do some shopping in the boutique or to meet the PONANT photographers in their dedicated space. As for lovers of the open sea, they will be able to visit the ship's upper deck to admire the spectacle of the waves and perhaps be lucky enough to observe marine species. A truly enchanted interlude, combining comfort, rest and entertainment.

Day 6 - Vava'u Islands

Vava'u is a splendid archipelago in Tonga made up of around forty picture-postcard coral islands scattered across the turquoise waters of the south Pacific Ocean. The main island is dominated by Mount Talau which offers a magnificent panoramic view over the islands. Along the long fine sandy beaches of these idyllic islets, the teeming marine life can be seen in the coral reefs, the gorgonian coral gardens and the underwater caves. The lush vegetation of the island will delight amateur botanists. The traditional local know-how reveals all the richness of this incredible natural heritage: woven leaves from the legendary pandanus, production of Noni juice with its many virtues, extraction of vanilla essence.

Day 7 - At sea

During your journey at sea, make the most of the many services and activities on board. Treat yourself to a moment of relaxation in the spa or stay in shape in the fitness centre. Depending on the season, let yourself be tempted by the swimming pool or a spot of sunbathing. This journey without a port of call will also be an opportunity to enjoy the conferences or shows proposed on board, depending on the activities offered, or to do some shopping in the boutique or to meet the PONANT photographers in their dedicated space. As for lovers of the open sea, they will be able to visit the ship's upper deck to admire the spectacle of the waves and perhaps be lucky enough to observe marine species. A truly enchanted interlude, combining comfort, rest and entertainment.

Day 8 - Crossing the International Date Line

Your itinerary enables you to cross the International Date Line. This imaginary line across the Earth's surface approximately follows the 180th meridian in the Pacific Ocean. Because of the roundness of the Earth and the necessity of

Wild Earth Travel

Small Ships, Big Adventures

0800 945 3327 (within New Zealand) | +64 (0) 3 365 1355 | **1800 107 715** (within Australia)

info@wildearth-travel.com | wildearth-travel.com

Wild Earth Travel

Small Ships, Big Adventures



wildearth-travel.com

info@wildearth-travel.com

having reference time meridians, we have to change dates when we cross this line. So if your ship is travelling west, you will need to add a day to the expected date; conversely, if travelling east, you will take away a day. This paradox, already noted by Magellan's crews during his circumnavigation, serves as dramatic motivation in several novels, including Jules Verne's famous *Around the World in Eighty Days*.

Day 9 - Rarotonga

You will be dazzled by the magnificent volcanic silhouette of Rarotonga, the largest of the Cook Islands. Perfectly circular, Rarotonga is closely surrounded by a coral reef over which break the endless waves of the south Pacific Ocean. The undulating profile of its sheer mountains standing out against the deep blue of the sky gives a glimpse of its summits at more than 600 metres altitude, such as Te Manga peak. The abrupt and vertiginous slopes are covered with luxuriant vegetation, a precious natural resource for the inhabitants of the island who have learnt to take advantage of this abundant nature and have developed a thriving agricultural sector.

Day 10 - At sea

During your journey at sea, make the most of the many services and activities on board. Treat yourself to a moment of relaxation in the spa or stay in shape in the fitness centre. Depending on the season, let yourself be tempted by the swimming pool or a spot of sunbathing. This journey without a port of call will also be an opportunity to enjoy the conferences or shows proposed on board, depending on the activities offered, or to do some shopping in the boutique or to meet the PONANT photographers in their dedicated space. As for lovers of the open sea, they will be able to visit the ship's upper deck to admire the spectacle of the waves and perhaps be lucky enough to observe marine species. A truly enchanted interlude, combining comfort, rest and entertainment.

Days 11 - 12 - Bora Bora, Society Islands

Paradisiacal atoll of the archipelago of the Leeward Islands, west of French Polynesia, mythical Bora Bora offers a natural spectacle of captivating beauty. You'll be won over as much by the white sandy beaches as by its famous lagoon, one of the most beautiful in the world, where colourful fish frolic in waters of incomparable turquoise. The island is covered with tropical

vegetation, and dominated by the majestic outline of Mount Otemanu. A promenade through this volcanic landscape will enable you to discover a number of villages and meet local communities.

Day 13 - Motu Mahana, Taha'a Island, Society Islands

Feet in the sand, on the islet of Motu Mahana, our sumptuous little private paradise, you will share a very special experience around an authentic traditional Polynesian barbecue. A veritable jewel in the Taha'a lagoon, pristine atoll of the Society Islands, Motu Mahana offers an infinite palette of shades of turquoise, an idyllic backdrop for observing the majestic ballet of the tropical fish. The volcanic island of Taha'a, dominated by Mount Ohiri and Mount Puurauti, will reveal its fertile and luxuriant nature, ideal for cultivating the magnificent black pearls of French Polynesia, as well as vanilla. This rare spice, greatly in demand by gourmets, is the main economic resource of what is also known as Vanilla Island.

Days 14 - 15 - Moorea Island

A part of the Windward Island archipelago just to the west of Tahiti, famous Mo'orea will leave you with a series of unforgettable images and memories. Bask on its heavenly beaches, enjoy a dip in the turquoise waters of its lagoon, and soak up its luscious vegetation and the heady flowers that carpet the inland areas. Get the most out of this natural gem with a trip to the Mo'orea Belvedere. Exceptional views of Mount Rotui unfurl before your eyes, with the Opunohu Bay and its valley to the left, and the famous Cook's Bay, surrounded by notched, cathedral-style peaks, to the right.

Days 15 - 16 - Papeete, Tahiti Island

Capital of French Polynesia, the city of Papeete is on the north-west coast of the island of Tahiti. You'll find a relaxed atmosphere here, where urban buzz combines with the legendary laid-back Polynesian lifestyle. Culture is not lacking. You can enjoy sites narrating the history of the archipelago, including the colonial cathedral and the Maison de la reine Marau. The Vaipahi public gardens will win you over by their abundant plant-life. The large municipal market offers local specialities: fresh fruit, spices and all kinds of fish abound on their stalls.

Please note:

Wild Earth Travel

Small Ships, Big Adventures

0800 945 3327 (within New Zealand) | +64 (0) 3 365 1355 | **1800 107 715** (within Australia)

info@wildearth-travel.com | wildearth-travel.com



Wild Earth Travel

Small Ships, Big Adventures



wildearth-travel.com

info@wildearth-travel.com

Itineraries are subject to change.



Wild Earth Travel

Small Ships, Big Adventures

0800 945 3327 (within New Zealand) | +64 (0) 3 365 1355 | **1800 107 715** (within Australia)

info@wildearth-travel.com | **wildearth-travel.com**

Wild Earth Travel

Small Ships, Big Adventures



wildearth-travel.com

info@wildearth-travel.com

YOUR SHIP: LE JACQUES CARTIER

YOUR SHIP: Le Jacques Cartier

VESSEL TYPE: Luxury

LENGTH:

PASSENGER CAPACITY: 92 cabins

BUILT/REFURBISHED: 2018/2019

Featuring innovative and environmentally-friendly equipment, elegantly designed staterooms, spacious suites with large windows, and lounge areas that open onto the outside, this new limited-capacity yacht boasting just 92 staterooms and suites will offer you a truly unique cruising experience.

As the sixth ship in a new series that remains true to the Ponant spirit, Le Jacques Cartier will embody the unique atmosphere that is the cruise line's hallmark: a subtle blend of refinement, intimacy and comfort.

Aboard this ship that flies the French flag, you will experience the incomparable pleasure of an intimate cruise, with the possibility of exploring an ever-increasing range of destinations in an ethnic-chic ambiance with luxury service.

Experience a luxurious setting where the accent is on authenticity and passion for travel.

RESTAURANTS

As it is an essential part of French culture, gastronomy will naturally have pride of place aboard this new ship.

To the back of Deck 4, you will find a 260 m² panoramic restaurant which can accommodate all of our passengers in a single sitting. Designed differently to that on our other ships, this

dining area, which opens onto the outside, will have a buffet of salads, desserts and cheeses at your disposal. Our discreet and attentive crew will provide table service for hot meals.

In a relaxed atmosphere, an outdoor grill on Deck 3 will serve grilled meats with a variety of salads and desserts.

PUBLIC AREAS

Le Jacques Cartier has many common areas that are designed and equipped to meet all of your needs while preserving the intimacy of each passenger.

A 140 m² reception area includes:

A reception/concierge desk,

An excursions desk,

The ship's administrative services,

The sales office, manned by our Guest Relations Officer,

Our 50 m² boutique which sells clothing, jewellery, beauty products, postcards and various accessories,

Toilets accessible to passengers with reduced mobility.

A new hydraulic platform with adjustable height provides:

Easier boarding than on any other cruise ship,

Easier Zodiac embarkation and disembarkation for expeditions,

Easier access to the sea for swimming and practising various water sports such as kayaking or paddle-boarding.

A pool deck offering:

A pool with a panoramic view, equipped with a counter-current swimming system,

A pleasant solarium,

An outdoor bar and lounge with armchairs and sofas.

A 200 m² main lounge which can accommodate all of our passengers to share convivial moments and to host activities

Wild Earth Travel

Small Ships, Big Adventures

0800 945 3327 (within New Zealand) | +64 (0) 3 365 1355 | **1800 107 715** (within Australia)

info@wildearth-travel.com | wildearth-travel.com



Wild Earth Travel

Small Ships, Big Adventures



wildearth-travel.com

info@wildearth-travel.com

organised during the day or evening.

Lastly, a theatre that seats 188, equipped with:

The latest sound and lighting technology,

A LED wall as the stage backdrop, for the projection of high-resolution images and videos.



and videos.



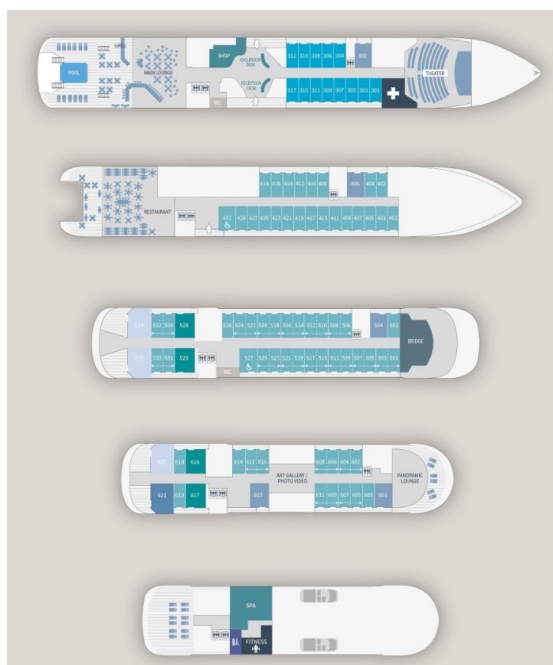
Wild Earth Travel

Small Ships, Big Adventures

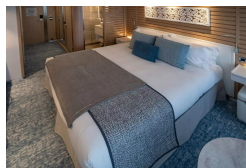
0800 945 3327 (within New Zealand) | +64 (0) 3 365 1355 | **1800 107 715** (within Australia)

info@wildearth-travel.com | **wildearth-travel.com**

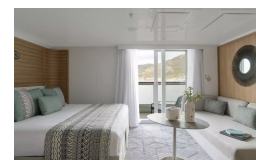
INSIDE YOUR SHIP



Deluxe Stateroom



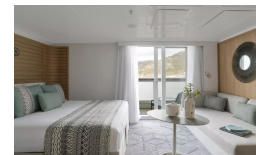
Deluxe Suite Deck 3



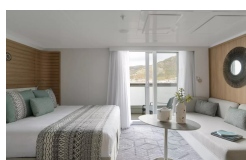
Deluxe Suite Deck 4



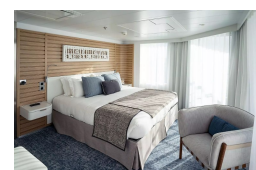
Deluxe Suite Deck 5



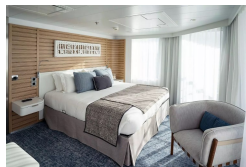
Deluxe Suite Deck 6



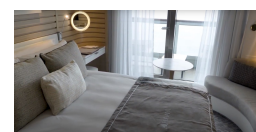
Grand Deluxe Suite Deck 5



Grand Deluxe Suite Deck 6



Prestige Deck 4





Wild Earth Travel

Small Ships, Big Adventures



wildearth-travel.com

info@wildearth-travel.com

PRICING

06-Sep-2026 to 21-Sep-2026

Deluxe Stateroom	14790 AUD pp
Prestige Deck 4	16420 AUD pp
Prestige Deck 5	17240 AUD pp
Prestige Deck 6	18210 AUD pp
Deluxe Suite Deck 4	23760 AUD pp
Deluxe Suite Deck 5	23760 AUD pp
Deluxe Suite Deck 6	23760 AUD pp
Deluxe Suite Deck 3	23760 AUD pp
Prestige Deck 5 Suite	28660 AUD pp
Prestige Deck 6 Suite	29960 AUD pp
Privilege Suite Deck 6	30940 AUD pp
Privilege Suite Deck 5	30940 AUD pp
Grand Deluxe Suite Deck 5	31930 AUD pp
Grand Deluxe Suite Deck 6	31930 AUD pp



Wild Earth Travel
Small Ships, Big Adventures

0800 945 3327 (within New Zealand) | +64 (0) 3 365 1355 | **1800 107 715** (within Australia)

info@wildearth-travel.com | **wildearth-travel.com**