



# Wild Earth Travel

*Small Ships, Big Adventures*

**wildearth-travel.com**

**info@wildearth-travel.com**

## SWEET MEDITERRANEAN ESCAPE - GREECE, CORSICA AND ITALY IN LUXURY

The mildness of summer on the waters of the Mediterranean Sea promises you an unforgettable 13-day journey between Greece, Corsica and Italy. Aboard *Le Boréal*, fall under the spell of the Mediterranean landscapes and the ancient vestiges that will tell you a fascinating story.

Throughout your journey, you will benefit from an excursion included per person per port of call, to choose from a selection offered by PONANT. During this cruise, discover the monastery of Saint John and the Cave of the Apocalypse where the last book of the New Testament was revealed to John the Apostle, from Patmos, set off from Taormina to climb the mythical Mount Etna, or admire the sumptuous archaeological sites, from the Temples of Zeus, Apollo and Athena to the Terrace of the Lions, from Delos. The diversity of experiences on offer promises you intense and varied moments (to discover the full range of excursions, go to the itinerary tab). The diversity of experiences on offer promises you intense and varied moments (to discover the full range of excursions, go to the itinerary tab).

From Athens, your ship will set sail for *Patmos*. Known as "the Jerusalem of the Aegean Sea", the island reveals itself to offer you a dazzling time between unique landscapes of white-sand beaches and rocky bays.

In the south-eastern Aegean Sea, the Cyclades archipelago invites you to enjoy the wild and appealing beauty of its islands. Delos, a veritable open-air museum, offers a unique testimony of the succession of different civilisations during the Aegean

period. *Le Boréal* will then head towards Paros. Nestling in the heart of the Cyclades archipelago, this island reputed for its sublime white marble offers a real concentration of Greek beauty, from whitewashed houses to olive groves to ancient monuments. On Milos, the limestone cliffs and small hidden coves are yours to discover in a soothing atmosphere.

The Peloponnese and Nafplio - the starting point to discover the Epidaurus theater and the site of Mycenae, both classified as UNESCO World Heritage Sites - beckon you, preceding the exploration of the island of Hydra, famous for its incomparable light and the tranquility of its streets where all car traffic is banned.

You will cross the emblematic Corinth Canal to arrive in picturesque Galaxidi. You will fall in love with the authentic character of this town, encircled by captivating arid mountains and a sea front of unrivalled beauty, with its paved little streets edged with former neo-classical residences, remnants of the naval era, and sumptuous religious buildings.

It will now be time to set sail towards Italy. Taormina, overlooking Etna's blanket of snow. Its streets will lead you to its famed ancient Greek theatre, where the quality of the acoustics is exceptional. After a timeless moment at sea, you sail further north to Gaeta. Clinging to the cliffs facing the Tyrrhenian Sea, the ancient city with its narrow streets redolent of a fascinating past will captivate you with its many architectural treasures, like the cathedral, an elegant Romanesque and Moorish building

Wild Earth Travel

*Small Ships, Big Adventures*

**0800 945 3327** (within New Zealand) | +64 (0) 3 365 1355 | **1800 107 715** (within Australia)

info@wildearth-travel.com | **wildearth-travel.com**

# Wild Earth Travel

*Small Ships, Big Adventures*

**wildearth-travel.com**

**info@wildearth-travel.com**

with ceramic decoration.

You will then stop at Porto Santo Stefano , a town built along a hillside and surrounded by a 17th century fortress.

Next, the Cap Corse peninsula reveals itself a little further south. You set sail for Calvi in the heart of the Balagne region. Between steep peaks and sublime beaches with turquoise waters, experience a wild and authentic Corsica.

Your cruise ends in Nice , capital of the French Riviera.



ch Riviera.

## ITINERARY

Day 1 - Athens

The Greek capital city is located on the edge of the Saronic gulf, in the east of the country. It bears a plural name in reference to the first villages that surround the Acropolis. You will be enchanted by the rocky plateau presided by its monuments listed as UNESCO World Heritage. In the city below, you can visit some of the liveliest districts in Athens: Plaka, with its maze of colourful streets, and where, in the evenings the drifting aroma of moussaka and garlic prawns will tickle your taste buds. The National Archaeological museum and the Cycladic Art Museum are also some of the city's key attractions and allow visitors to discover Athens' cultural past.

## Day 2 - Patmos

Patmos is one of the legendary must-see islands in the Dodecanese. This is where Saint John resided, presumed author of the last book in the Bible. The cave of the Apocalypse and the Saint John Monastery are dedicated to him. These sites, which are listed by UNESCO as World Heritage, are located at the top of a hillside planted with vines and orchards. On the shore, the crystalline coves of Kambos and Lampi offer absolutely gorgeous swimming areas.

## Day 3 - Delos

This legendary Cyclades island of Delos stands just a few miles southwest of Mykonos. The ceremonial solemnity of this ancient holy sanctuary will not leave you indifferent. The sheer size and importance of this UNESCO World Heritage site which covers over half of the island is thrilling in itself. From the Stoa of Antigonos, the Terrace of the Lions, to the carved marble animal statues, you will make discovery after discovery, against a backdrop of the Aegean stretching to the horizon. The theatre steps on the hillside are a particularly good place from which to enjoy the expansive view.

## Day 3 - Paros

Wild Earth Travel

*Small Ships, Big Adventures*

**0800 945 3327** (within New Zealand) | +64 (0) 3 365 1355 | **1800 107 715** (within Australia)

info@wildearth-travel.com | **wildearth-travel.com**





# Wild Earth Travel

*Small Ships, Big Adventures*

**wildearth-travel.com**

**info@wildearth-travel.com**

Famous for its white marble, the island of Paros is located in the Cyclades. Along the quays of Parikia, its main town, you'll see Byzantine churches and neoclassical buildings. To make the most of the turquoise waters, you can stop over in Naoussa. This little fishing port is bounded by a very beautiful cove.

## Day 4 - Adamas, Milos

Although Milos is especially renowned for the famous statue of Venus found in a field there and now displayed in the Louvre in Paris, this mineral island is also a geological treasure. Its volcanic origin is evident in its breathtaking landscapes and the colours of its cliffs, ranging from pure white to deep red. You'll discover the wild beauty of the shorelines lined with the most beautiful beaches in Greece from a ship deck, and you'll enjoy privileged access to emerald-green coves. Tiny fishing ports like Adamas hide there, with brightly-painted doors and terraces. Milos is a charming port of call in the heart of the Cyclades.

## Day 5 - Nafplion

The engaging town of Nafplion is staggered up green hillsides of the Argolic Gulf, to the east of the Peloponnese. Do not be surprised by its extremely varied cultural heritage. Some of the must-see visits are the ancient agora on the plateau of Akronafplia, Italianate arcades in Syntagma square as well as the baroque fortress of Palamidi on a hillside of the same name. At the top of the hill, views of the gulf and the surrounding mountains are simply awesome. If you want to chill out by the water's edge, walk along the Arvanitia promenade to a beautiful creek in the shade of cedars and cypresses.

## Day 6 - Hydra

This unusual gem belonging to the Saronic islands is located to the east of the Peloponnese. There are no cars here. Named after the island, the harbour town is layered up the slopes of a mountainous bay. You may be surprised to

see beautiful stone mansions. These are traditional here, as are the multi-coloured caiques along the quays. Further along the shore, you will discover the Historical Archives Museum. Collections from Athens National History Museum are exhibited in the elegant villa Koundouriotis.

## Day 7 - Crossing the Corinth Canal

The Corinth Canal cuts through the Isthmus of Corinth, turning the Peloponnese into an island as it separates the region from the Greek mainland. Inaugurated in 1893, the canal is a little over six kilometres long and enables merchant vessels and passenger to avoid a long 400-km detour around the peninsula. The two sides of the canal reach a height of approximately fifty metres. From the exterior decks, don't miss this unique opportunity to watch the ship as it navigates along the narrow strip of water encased between tall, ochre cliffs. What an experience!

## Day 7 - Galaxidi

Encircled by captivating arid mountains and a sea front of unrivalled beauty, picturesque Galaxidi stands proudly in the Gulf of Corinth, on the shores of Krisaikos Bay. You will fall in love with the authentic character of this preserved and majestic town, with its paved little streets edged with former neo-classical residences, remnants of the naval era, and sumptuous religious buildings. Like one of the town's symbols: the church of Agios Nikolaos (Saint Nicholas). The building with Byzantine architecture dominates the town, and boasts two bell towers and a monumental dome.

## Day 8 - At sea

During your journey at sea, make the most of the many services and activities on board. Treat yourself to a moment of relaxation in the spa or stay in shape in the fitness centre. Depending on the season, let yourself be tempted by the swimming pool or a spot of sunbathing. This journey without a port of call will also be an opportunity to enjoy the conferences or shows proposed on board,

**Wild Earth Travel**

*Small Ships, Big Adventures*

**0800 945 3327** (within New Zealand) | +64 (0) 3 365 1355 | **1800 107 715** (within Australia)

info@wildearth-travel.com | **wildearth-travel.com**



# Wild Earth Travel

*Small Ships, Big Adventures*

**wildearth-travel.com**

**info@wildearth-travel.com**

depending on the activities offered, or to do some shopping in the boutique or to meet the PONANT photographers in their dedicated space. As for lovers of the open sea, they will be able to visit the ship's upper deck to admire the spectacle of the waves and perhaps be lucky enough to observe marine species. A truly enchanted interlude, combining comfort, rest and entertainment.

## Day 9 - Taormina, Sicily

Located on Sicily's eastern coast, in the province of Messina, the seaside town of Taormina is Sicily's Saint-Tropez, boasting heritage sites, secluded beaches and luxury shopping. You can visit its medieval centre, suspended 300 metres above sea level, where terraces offer a spectacular view of the Mediterranean Sea. Another vestige from its past are the ruins of the Greco-Roman theatre. This extremely well-preserved site attracts visitors who are fascinated by the natural beauty of the area which overlooks a turquoise bay.

## Day 10 - Gaeta

Gaeta takes its name from the legend of the nanny of Aeneas. This illustrious relationship can be seen in the nobility of this old town, built on a peninsula, at the end of a headland. In Roman times, Gaeta was already a renowned seaside destination; it fell under Byzantine domination then became an autonomous duchy and an independent republic. The fortifications that surround this ancient fort remind us of this rich history, as does the cathedral bell tower, an elegant building of both Roman and Moor influence, decorated with ceramic in the style of bell-towers of Amalfi.

## Day 11 - Porto Santo Stefano

In Southern Tuscany, Porto Santo Stefano, a charming seaside resort located on the Monte Argentario peninsula, is renowned for its enchanting setting. Nestling on the side of a hill, the small town offers beautiful sandy beaches with crystal-clear water and a picturesque town centre. Stroll around its steep

alleyways lined with coloured houses and discover La Rocca, a Spanish fortress built in the 17th century to protect the town against pirate attacks. There, you can enjoy a stunning view over the port and the Gulf of Talamone.

## Day 12 - Calvi, Corsica

Nestled on a rocky spur in the north-west of Corsica, the port of Calvi offers its whiteness between two sapphire-coloured bays. Capital of the Balagne region, the Genoese city benefits from an exceptional natural setting between the abrupt relief of the central chain, fertile hills and long sandy beaches. From the promontory of the Notre-Dame-de-la-Serra chapel, built in the 19th century on the ruins of a 15th century sanctuary, you will not miss the sublime panorama of the seaside, the mountains and the Calvi citadel. A little further west, you will have the opportunity to discover with the peninsula of Revelatta, a wilder and more preserved part of Corsica.

## Day 13 - Nice

Capital of the Cote d'Azur, Nice is surrounded by an amphitheatre of hills and mountains that protects it from the wind. You will probably want to explore the Promenade des Anglais, where you can sit on one of the famous blue chairs laid out opposite the baie des Anges. The Chateau hill is also a very pleasant place to walk. This is the entrance to the old city, with its bustling markets and regional products along the main street, the Cours Saleya.

### Please note:

Itineraries are subject to change.

Wild Earth Travel

*Small Ships, Big Adventures*

**0800 945 3327** (within New Zealand) | +64 (0) 3 365 1355 | **1800 107 715** (within Australia)

info@wildearth-travel.com | wildearth-travel.com





# Wild Earth Travel

*Small Ships, Big Adventures*

**wildearth-travel.com**

**info@wildearth-travel.com**

## YOUR SHIP: LE BOREAL

<b>YOUR SHIP:</b>	<b>Le Boreal</b>
<b>VESSEL TYPE:</b>	<b>Luxury Expedition / Cruise Ship</b>
<b>LENGTH:</b>	<b>142 meters</b>
	<b>264 (in twin cabins, 200 in</b>
<b>PASSENGER CAPACITY:</b>	<b>Antarctica)</b>
<b>BUILT/REFURBISHED:</b>	<b>2011</b>

A superb mega-yacht with 132 cabins, she is the fruit of the expertise of the Italian Fincantieri shipyard and French sophistication, as interpreted by designer Jean-Philippe Nuel. Le Boreal remains faithful to our philosophy - to create a unique atmosphere, a subtle blend of luxury, intimacy and well-being. Superior materials, discreet elegance and a tasteful decor combined with exterior and interior lines to reflect a nautical mood, subtly revisited. On board, soothing neutral tones are enlivened by splashes of red, our signature theme linking tradition and innovation to create personal touches in the spirit of a "private yacht".

### Cuisine

Loyal to the great French tradition, the haute cuisine on board is worthy of the finest restaurants, where discreet, attentive service is the hallmark.

Our two restaurants welcome you for breakfasts, lunch and dinner. The Gastronomic Restaurant, with a capacity of 268 persons, is situated on Le Liberte Deck and serves you French and international cuisine accompagnied by fine wine. On the Grill Restaurant, you will have the opportunity to eat outside

and enjoy buffet lunch and themed dinner.

### Life On Board

Whether you want to join other guests in the theatre or games area (Wii™ consoles, etc), or relax on your own in a quiet corner of the library, Le Boreal has been designed to meet the needs of every guest.

Everything has been done to preserve the independence of each guest to suit their personal tastes: lounges for lectures and shows, a spa in partnership with Carita™, but also more intimate spaces such as the library and internet corner. Comfortable cabins, nearly all with private balcony, are available for families either as triples or as communicating cabins. There is also a games area with Wii™ consoles, children's menus, and a baby-sitting service. Just as if you were on a private yacht, your time is your own to do as you please.

Fitted with the latest equipment (Kinesis Wall, running machine) and in partnership with the famous Carita™ brand, the Beauty Centre on Le Boreal welcomes you for some unforgettable moments of relaxation and pampering (beauty treatments, hairdresser, hammam, balneotherapy).

**Wild Earth Travel**

*Small Ships, Big Adventures*

**0800 945 3327** (within New Zealand) | +64 (0) 3 365 1355 | **1800 107 715** (within Australia)

info@wildearth-travel.com | **wildearth-travel.com**



# Wild Earth Travel

*Small Ships, Big Adventures*

**wildearth-travel.com**

**info@wildearth-travel.com**



eotherapy).



Wild Earth Travel

*Small Ships, Big Adventures*

**0800 945 3327** (within New Zealand) | +64 (0) 3 365 1355 | **1800 107 715** (within Australia)

info@wildearth-travel.com | **wildearth-travel.com**



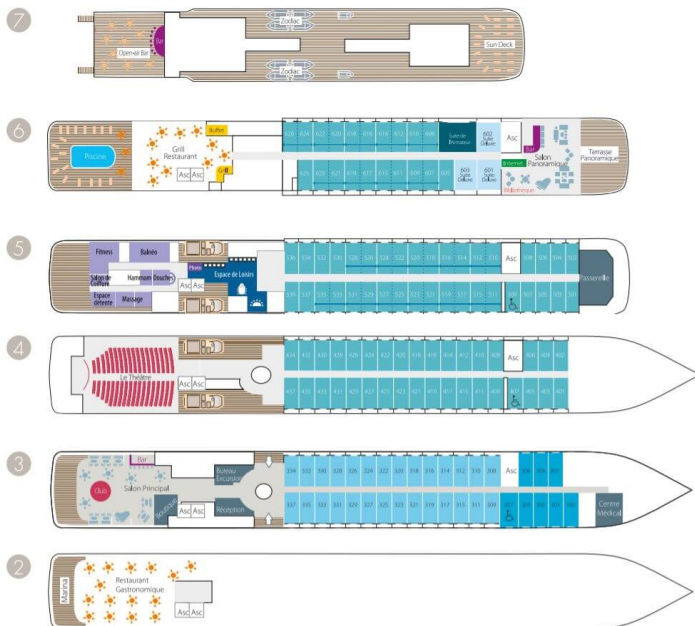
# Wild Earth Travel

*Small Ships, Big Adventures*

[wildearth-travel.com](http://wildearth-travel.com)

[info@wildearth-travel.com](mailto:info@wildearth-travel.com)

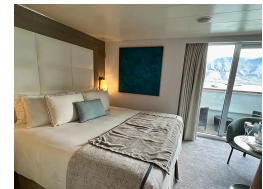
## INSIDE YOUR SHIP



Deluxe Stateroom



Deluxe Suite



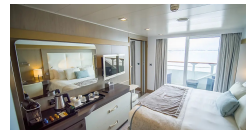
Prestige Deck 4



Prestige Deck 5



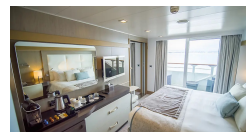
Prestige Deck 5 Suite



Prestige Deck 6



Prestige Deck 6 Suite



Superior Stateroom



Wild Earth Travel

*Small Ships, Big Adventures*

0800 945 3327 (within New Zealand) | +64 (0) 3 365 1355 | 1800 107 715 (within Australia)

[info@wildearth-travel.com](mailto:info@wildearth-travel.com) | [wildearth-travel.com](http://wildearth-travel.com)



# Wild Earth Travel

*Small Ships, Big Adventures*

**wildearth-travel.com**

**info@wildearth-travel.com**

## PRICING

**17-Jul-2026 to 29-Jul-2026**

<b>Superior Stateroom</b>	<b>11290 AUD pp</b>
<b>Deluxe Stateroom</b>	<b>11910 AUD pp</b>
<b>Prestige Deck 4</b>	<b>12530 AUD pp</b>
<b>Prestige Deck 5</b>	<b>13150 AUD pp</b>
<b>Prestige Deck 6</b>	<b>13880 AUD pp</b>
<b>Deluxe Suite</b>	<b>22410 AUD pp</b>
<b>Prestige Deck 5 Suite</b>	<b>24890 AUD pp</b>
<b>Prestige Deck 6 Suite</b>	<b>25510 AUD pp</b>



**Wild Earth Travel**  
*Small Ships, Big Adventures*

**0800 945 3327** (within New Zealand) | +64 (0) 3 365 1355 | **1800 107 715** (within Australia)

info@wildearth-travel.com | **wildearth-travel.com**





# Wild Earth Travel

*Small Ships, Big Adventures*

**wildearth-travel.com**

**info@wildearth-travel.com**

## SPECIAL OFFERS

Online prices reflect the current brochure fare savings of up to 30%. Prices may change based on demand. Terms and conditions apply. This special offer is subject to availability. Please contact us for more details.

Wild Earth Travel

*Small Ships, Big Adventures*

**0800 945 3327** (within New Zealand) | +64 (0) 3 365 1355 | **1800 107 715** (within Australia)

info@wildearth-travel.com | **wildearth-travel.com**