



Wild Earth Travel

Small Ships, Big Adventures

wildearth-travel.com

info@wildearth-travel.com

EXPLORING SVALBARD CRUISE FROM LONGYEARBYEN

Embark on the Exploring Svalbard luxury cruise, a captivating round trip voyage departing from the world's northernmost town, Longyearbyen, on the island of Spitsbergen. This adventure leads you through the breathtaking landscapes of the Svalbard archipelago, including remote islands such as Nordaustlandet and Edgeøya, before returning to Longyearbyen. Throughout this journey, you'll have the chance to visit intriguing locales such as The North Pole Expeditions Museum in Longyearbyen, which chronicles early polar explorations. Learn about the Svalbard Global Seed Vault, a vital repository preserving seeds from across the globe. As you navigate the Arctic waters, keep an eye out for mesmerizing wildlife like polar bears, ringed seals and walrus. Your luxury cruise experience includes a variety of activities to engage and enrich. Optional kayaking with the Swan Hellenic Expedition Team offers a unique perspective on the stunning Arctic landscapes. As you're enveloped in the natural wonders of Svalbard, take delight in the diverse flora burgeoning under the midnight sun, creating unforgettable memories on this extraordinary voyage.



ITINERARY

Days 0 - 1 - Pre Cruise & Longyearbyen

The world's most northerly town, Longyearbyen, on Spitsbergen, Svalbard's largest island, also claims the most northerly high street and pub. It's home to The North Pole Expeditions Museum chronicling early pole-reaching efforts by air. Nearby, Svalbard Global Seed Vault preserves duplicate seeds from gene banks worldwide. Arctic waters around are populated by whales, including bowheads and narwhals, while walrus are regularly seen hauling out.

Days 2-7 - Svalbard

Wild Earth Travel
Small Ships, Big Adventures

0800 945 3327 (within New Zealand) | +64 (0) 3 365 1355 | **1800 107 715** (within Australia)

info@wildearth-travel.com | wildearth-travel.com



Wild Earth Travel

Small Ships, Big Adventures

wildearth-travel.com

info@wildearth-travel.com

Svalbard is the kingdom of the polar bears, deep in the Arctic Circle, featuring varied polar landscapes and gargantuan glaciers. Beyond magnificent fjords in the north, the remaining sea ice serves as prime hunting grounds for polar bears. Closer to Longyearbyen, tundra and beaches replace snow and ice. Alongside 600 polar bears, this Arctic hotspot is home to walrus, Svalbard reindeer, ringed seals and arctic fox.

Day 7 - Longyearbyen

The world's most northerly town, Longyearbyen, on Spitsbergen, Svalbard's largest island, also claims the most northerly high street and pub. It's home to The North Pole Expeditions Museum chronicling early pole-reaching efforts by air. Nearby, Svalbard Global Seed Vault preserves duplicate seeds from gene banks worldwide. Arctic waters around are populated by whales, including bowheads and narwhals, while walrus are regularly seen hauling out.

Please Note:

Itineraries are subject to change.

Wild Earth Travel
Small Ships, Big Adventures

0800 945 3327 (within New Zealand) | +64 (0) 3 365 1355 | **1800 107 715** (within Australia)

info@wildearth-travel.com | **wildearth-travel.com**



Wild Earth Travel

Small Ships, Big Adventures

wildearth-travel.com

info@wildearth-travel.com

YOUR SHIP: DIANA

YOUR SHIP:	Diana
VESSEL TYPE:	Expedition Ship
LENGTH:	125 meters
PASSENGER CAPACITY:	192
BUILT/REFURBISHED:	2022-2023

Arriving in early 2023, SH Diana will be the largest ship in our fleet, providing elegant and spacious 5-star accommodation for 192 guests in 96 spacious staterooms and suites, the vast majority with large balconies. Operated by an onboard team of 140 she will provide the highest levels of personal service and take Swan Hellenic back to its roots when she launches, exploring the Mediterranean and its famous sites of antiquity. Now sit back, relax and take a moment to get to know this amazing new ship, purpose-designed for our unique cultural expedition cruises.

Named after the Ancient Roman goddess of light, the moon, hunting and the wilderness, SH Diana been specially designed for worldwide cruising to explore the most inspiring and inaccessible places on earth. Building on the outstanding amenities of her sister ships, she adds a dedicated Multifunctional Room next to the Observation Lounge, a Private Dining Room for special occasions, and two tenders which bring guests a comfortable alternative to Zodiacs for expedition landings. A Polar Class 6 ice-strengthened hull combines with extra-large stabilisers to make your journey as comfortable as possible.

SH Diana has been designed for immersive experiences, with extensive outside deck areas, multiple observation points and bright, open and relaxing public spaces with unobstructed views. The pleasure and safety of our guests is paramount at all times, cared for by our attentive crew and seasoned expedition leaders. Cutting edge hygiene technology protects the health of all on board to the highest standards and includes air conditioning with UV sanitisation systems.

SH Diana's 96 staterooms , including 11 suites, are each a superbly comfortable home from home and all feature panoramic sea views, a flame-effect fireplace, original works of art, plush couches, premium pocket sprung mattresses, en-suite bathrooms with glass-enclosed rain showers, and Egyptian cotton towels, bathrobes and sheets. A pillow menu offers customised head and neck comfort during rest, while a large flat screen TV, espresso machine with Illy premium coffee, tea making facilities with the finest Kusmi teas, and a minibar with refreshments enhance relaxation at any time. In-room dining is of course available at all hours.



all hours.

Wild Earth Travel
Small Ships, Big Adventures

0800 945 3327 (within New Zealand) | +64 (0) 3 365 1355 | 1800 107 715 (within Australia)

info@wildearth-travel.com | wildearth-travel.com

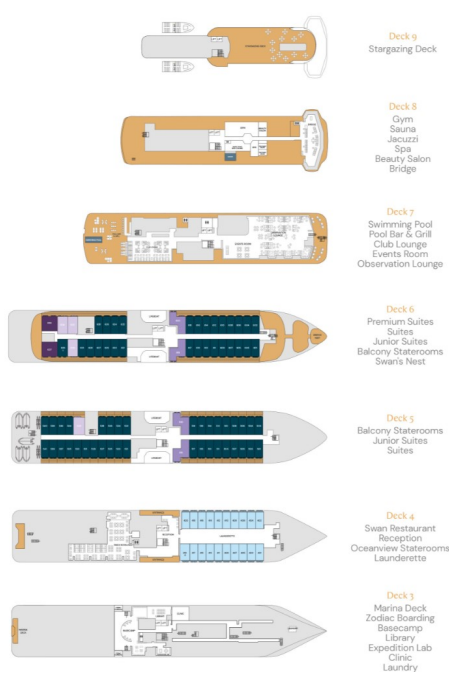


Wild Earth Travel
Small Ships, Big Adventures

wildearth-travel.com

info@wildearth-travel.com

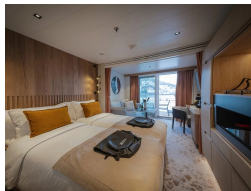
INSIDE YOUR SHIP



Balcony D5 - from



Balcony D6 - from



Balcony M5 - from



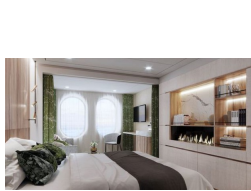
Junior Suite - from



Oceanview D4 - from



Oceanview M4 - from



Premium Suite



Suite - from





PRICING

12-Jun-2026 to 20-Jun-2026

Oceanview D4 - from	16280 AUD pp
Oceanview M4 - from	16980 AUD pp
Balcony D5 - from	19580 AUD pp
Balcony M5 - from	20380 AUD pp
Balcony D6 - from	21180 AUD pp
Junior Suite - from	24380 AUD pp
Suite - from	28480 AUD pp
Premium Suite	32580 AUD pp

19-Jun-2026 to 27-Jun-2026

Oceanview D4 - from	16280 AUD pp
Oceanview M4 - from	16980 AUD pp
Balcony D5 - from	19580 AUD pp
Balcony M5 - from	20380 AUD pp
Balcony D6 - from	21180 AUD pp
Junior Suite - from	24380 AUD pp
Suite - from	28480 AUD pp
Premium Suite	32580 AUD pp

26-Jun-2026 to 04-Jul-2026

Oceanview D4 - from	16280 AUD pp
Oceanview M4 - from	16980 AUD pp
Balcony D5 - from	19580 AUD pp
Balcony M5 - from	20380 AUD pp
Balcony D6 - from	21180 AUD pp
Junior Suite - from	24380 AUD pp
Suite - from	28480 AUD pp
Premium Suite	32580 AUD pp

03-Jul-2026 to 11-Jul-2026

Oceanview D4 - from	16280 AUD pp
Oceanview M4 - from	16980 AUD pp
Balcony D5 - from	19580 AUD pp
Balcony M5 - from	20380 AUD pp
Balcony D6 - from	21180 AUD pp
Junior Suite - from	24380 AUD pp
Suite - from	28480 AUD pp
Premium Suite	32580 AUD pp