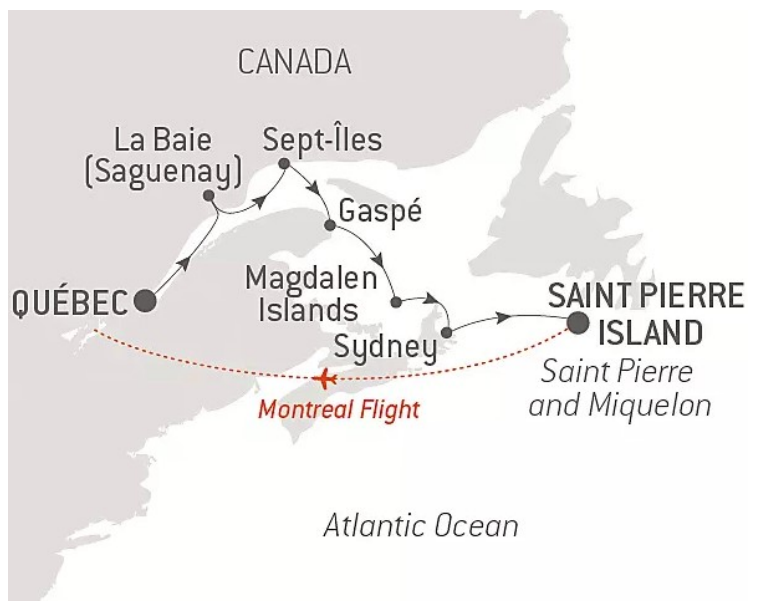


THE ST. LAWRENCE RIVER IN THE HEART OF THE BOREAL WINTER

With featured guest Sue Flood, British Photo Ambassador. Le Commandant Charcot, a technological wonder capable of sailing in the most extreme environments, is opening up new horizons in unrivalled comfort and invites you to explore the Saint Lawrence. This river is not accessible to traditional ships in winter, so this exclusive and all-new PONANT journey lifts the veil on unique great open spaces, where the waters, once turbulent, freeze into ice, and where the forests are dressed in an immaculate white coat. You will sail among different states and forms of ice - from drifting and fragmented sea ice to solid ice - and will be able to admire the evolution of this spectacular natural scenery from the reassuring cocoon of Le Commandant Charcot. In these lands, only the murmur of broken ice, bearing mysteries and legends, disturbs the calmness. Aboard the ship or on shore, you will seize the opportunities to explore these places where nature reigns supreme and in never-ending variety: boreal forests of immaculate conifers, snow-covered valleys and a sea of ice. Set off to discover this enchanting environment, thanks to winter activities such as hiking or snowshoeing, dog sledding or ice fishing. You may be lucky enough to see typical animals like caribou, elk and black bears in their natural habitat, or watch whitecoats being born in the Magdalen Islands, if weather and ice conditions permit. In this region, where souls are filled with deep serenity, the colourful houses and fishing huts stand valiantly. Their sparkling facades, in bright and vibrant colours, defy the harshness of the winter landscape. Here, in one of the "few places where you can experience the cold with so much warmth" (Saguenay proverb), you will receive a hospitable welcome from Quebeckers and the Innu and

Micmac peoples in unforgettable get-togethers. These indigenous communities, who include some of the First Nations, will tell you about their stories, legends and ancestral traditions. A journey suspended in time, where lives blend with the natural elements and where the wild beauty of nature is revealed in its full splendour.



splendour.

ITINERARY

Days 1 - 2 QUÉBEC

At the confluence of the Saint Charles River and the Saint Lawrence estuary, in the South-East of Canada, the capital of the Beautiful Province puts on its best



Wild Earth Travel

Small Ships, Big Adventures

wildearth-travel.com

info@wildearth-travel.com

finery in the winter season. During its long winter months, the historic streets of the city - whose name means "where the river narrows" in the Mi'kmaq language - are decked out in a cloak of snow. Let yourself be swept away by the unique atmosphere of the old town, including in the Petit Champlain district, a UNESCO World Heritage Site, where the aromas of spices and hot chocolate emanating from the surrounding cafes will warm up hearts and souls alike. An oasis in the heart of urban life, the Plains of Abraham will provide you with the opportunity to try out the most popular winter activities, like cross-country skiing or ice skating, while making the most of sumptuous panoramas over the city that hosts the world's largest winter carnival every year.

Days 3 - 4 LA BAIE (SAGUENAY)

During the long winter months, in the majestic Saguenay Valley, the borough of La Baie is cloaked in an aura of mystery. Here, the striking contrasts of its pristine lands, where nature displays its full splendour, invite you to experience a unique moment alongside the Saguenayens, a people amongst the most welcoming and hospitable in the world. During a snowshoe walk or a dog sled outing, as a passenger or a musher, take the time to observe immaculate nature bordered by a thick ice floe, where Le Commandant Charcot will remain for several days, and you will be able to disembark. Each winter, hundreds of colourful huts set up on these frozen waters to practice traditional ice fishing. You will be initiated into these ancestral techniques and have the pleasure of tasting freshly caught rockfish.

Day 5 SAILING SAGUENAY RIVER

In the heart of winter, the Saguenay River becomes an enchanting setting. Aboard Le Commandant Charcot, set sail on a captivating cruise. The once turbulent waters of the Saguenay are now calm and silent, covered in a thick layer of ice. The trees lining its shores are wrapped in a glistening coat of snow, forming a majestic alley. At twilight, when the sun is setting behind the mountains, pink and gold reflections light up the horizon, turning the landscape into a bewitching tableau.

Days 6 - 7 SEPT-ÎLES

On the edge of the Canadian landscape, between the icy waters of the Gulf of Saint Lawrence, Sept-Îles invites you on a unique journey. Surrounded by a

captivating sea of ice and an immaculate boreal forest, the seven islands, eternal guardians of the coastline, seem to murmur timeless stories. In particular, you will have the privilege of meeting the Innu people, the indigenous civilisation of the Cote-Nord, during a unique moment when you will learn more about their ancestral customs and traditions. The area is famous for its winter festivities; like its emblematic Hivernants (hunters and trappers who would spend the winter), fall under the charm of its unique environment. During Nordic hikes on skis or snowshoes, you will be enchanted by its captivated landscapes.

Days 8 - 9 GASPÉ

In the glacial darkness of the Canadian winter, Gaspé stands proud like a preserved and authentic jewel at the edge of the dark waters of the Gulf of Saint Lawrence. Nature seems to be holding its breath. The captivating Mount Jacques-Cartier, the highest point of the Chic-Choc Mountains range and the South, is dressed with an immaculate coat of snow, while the frozen rivers slowly wind their way, fixing time in their icy embrace. During a snowshoe walk, fall in love with the captivating landscapes of the L'Anse-au-Griffon Valley, right in the heart of the Forillon National Park. Then, in Perce, opposite the famous eponymous Rock, dive into the natural beauty of the "magic forest", where thousands of conifers decked out in an immaculate white cloak are like silent guardians watching over this isolated piece of land. You may also fall in love with this charming town, where the exciting history and the conviviality of the locals come together in a delightful blend.

Days 10 - 11 CAP-AUX-MEULES, MAGDALEN ISLANDS

Scattered through the Gulf of Saint Lawrence, the Magdalen Islands offer a variety of extraordinary landscapes, between captivating drifting ice floe, tall red sandstone cliffs, sandy beaches covered with an immaculate coat and snow-covered valleys. Here, winter really is a special season, a time of contrasts and mysteries. The icy winds intertwine with the softness of the salty air, and the colourful houses, dressed in their finest attire, stand bravely in this enchanting scenery. In these distant lands, you will be plunged into Acadian culture, you will discover ancestral traditions here and will have the chance to explore the unique landscapes on hikes or snowshoe walks along the icy shores.

Day 12 SYDNEY

Wild Earth Travel
Small Ships, Big Adventures

0800 945 3327 (within New Zealand) | +64 (0) 3 365 1355 | 1800 107 715 (within Australia)

info@wildearth-travel.com | wildearth-travel.com



Anchored on the eastern shores of the province of Nova Scotia, Sydney, the largest town on the Cape Breton Island, stands proudly opposite the icy breezes of the Gulf of Saint Lawrence. Fall under the charms of an immaculate and preserved nature in this winter setting. Here, the snow-capped mountains plunge into the waters dotted with drifting ice floe, the rays of winter sun caress the captivating conifer forests with their golden hue, creating enchanting plays on light. On these lands steeped in history, the place where the Mi'kmaq indigenous people encountered the British and French explorers, discover a rich heritage shaped by these different visits, as evidenced by the emblematic Big Fiddle, the largest violin in the world standing over 18 metres (60 feet) tall.

Day 13 SAINT PIERRE ISLAND, SAINT PIERRE AND MIQUELON

Off the Canadian coast, discover Saint Pierre Island, one of the two main islands of the Saint Pierre and Miquelon archipelago, the only French territory in North America. Endowed with a natural harbour, the island, whose name is a reference to the patron saint of fishermen, developed around the fishing industry and still has many traces of its past today. Whale hunting, cod fishing, alcohol smuggling during the Prohibition: all of these memories are still very much alive in the capital, Saint-Pierre.

Please Note:

The itinerary is subject to modifications. On board, the sailing programme, outings and activities cannot be guaranteed and are subject to weather and ice conditions.



wildearth-travel.com

info@wildearth-travel.com

YOUR SHIP: LE COMMANDANT-CHARCOT

YOUR SHIP:	Le Commandant-Charcot
VESSEL TYPE:	Polar Luxury Expedition
LENGTH:	149.9 meters
PASSENGER CAPACITY:	135 cabins
BUILT/REFURBISHED:	2018/2019

Be the first aboard Le Commandant-Charcot, the world's luxury polar exploration vessel, and enjoy a unique sailing experience in the Arctic or Antarctic!

With its hybrid propulsion combining liquefied natural gas (LNG) and electric generators, Le Commandant-Charcot has been designed to minimise the environmental impact of travel to the furthest latitudes.

The decoration of the ship, imagined by two internationally renowned design and architecture firms - the studio of Jean-Philippe Nuel and Wilmotte & Associates - is designed to be in harmony with the environment. The approach is contemporary with the desire to create a warm and elegant setting; stone, wood and leather recall the natural environment in which the ship is sailing.

Equipped with just 135 staterooms including 31 suites with balconies and outside views, Le Commandant-Charcot welcomes you in an intimate and refined atmosphere. Outstanding gastronomy in the two restaurants, relaxation in the indoor pool surrounded by its winter garden, relaxation in the well-being area with sauna and Snow Room... Like on a private yacht, each of our guests is unique.

PUBLIC AREAS

Le Commandant-Charcot has many common areas that are designed and equipped to meet all of your needs while preserving the intimacy of each passenger.

A 177 m² reception area includes: A reception/concierge desk, An expeditions desk, The ship's administrative services, The sales office, manned by our Hospitality & Travel Manager officer, Our boutique which sells clothing, jewellery, beauty products, postcards and various accessories, The image & photo desk.

The different lounges: A 302 m² main lounge including a 28 m² cigar lounge, a tea corner and a bar, with live music on selected evenings, A 400 m² panoramic bar and lounge, An open-air Bar. The recreation spaces

Fitness & Beauty Corner: Fitness room: Elliptic, running machines, bicycles...

Beauty Corner: Hairdresser, Massage rooms, Sauna, Snow Room, Nail Shop.

Pool area: Indoor Pool and winter garden - Outdoor Pool

Theatre: Capacity: 270-276 - Main show room for conferences and live entertainment on selected evenings - State-of-the-art audio and video technology.

Leisure area: Public areas - Library - Medical centre.

16 Zodiac®.

Wild Earth Travel

Small Ships, Big Adventures



wildearth-travel.com

info@wildearth-travel.com



16 Zodiac®.

Wild Earth Travel
Small Ships, Big Adventures

0800 945 3327 (within New Zealand) | +64 (0) 3 365 1355 | 1800 107 715 (within Australia)

info@wildearth-travel.com | wildearth-travel.com

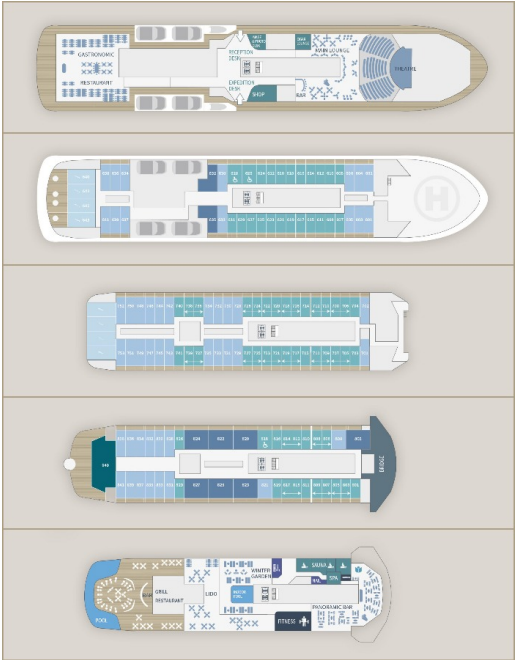


Wild Earth Travel
Small Ships, Big Adventures

wildearth-travel.com

info@wildearth-travel.com

INSIDE YOUR SHIP



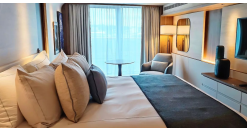
Deluxe Suite Deck 6



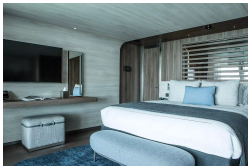
Deluxe Suite Deck 7



Deluxe Suite Deck 8



Duplex Suite



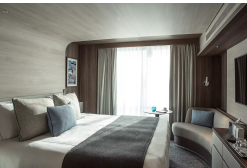
Grand Prestige Suite



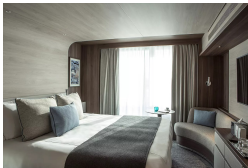
Prestige Stateroom Deck 6



Prestige Stateroom Deck 7



Prestige Stateroom Deck 8



Wild Earth Travel
Small Ships, Big Adventures

0800 945 3327 (within New Zealand) | +64 (0) 3 365 1355 | 1800 107 715 (within Australia)

info@wildearth-travel.com | wildearth-travel.com



wildearth-travel.com

info@wildearth-travel.com

PRICING

13-Feb-2027 to 27-Feb-2027

Prestige Stateroom Deck 6	35400 AUD pp
Prestige Stateroom Deck 7	36090 AUD pp
Prestige Stateroom Deck 8	36800 AUD pp
Deluxe Suite Deck 6	37850 AUD pp
Deluxe Suite Deck 7	39610 AUD pp
Deluxe Suite Deck 8	41020 AUD pp
Prestige Suite Deck 7	52970 AUD pp
Prestige Suite Deck 8	54720 AUD pp
Grand Prestige Suite	56480 AUD pp
Privilege Suite Deck 8	59990 AUD pp
Duplex Suite	82840 AUD pp

ADDITIONAL CHARGES:

Port Taxes and Fees 890 AUD pp

27-Feb-2027 to 13-Mar-2027

Prestige Stateroom Deck 6	34040 AUD pp
Prestige Stateroom Deck 7	34710 AUD pp
Prestige Stateroom Deck 8	35400 AUD pp
Deluxe Suite Deck 6	36410 AUD pp
Deluxe Suite Deck 7	38090 AUD pp
Deluxe Suite Deck 8	39450 AUD pp
Prestige Suite Deck 7	50950 AUD pp
Prestige Suite Deck 8	52630 AUD pp
Grand Prestige Suite	54310 AUD pp
Privilege Suite Deck 8	57690 AUD pp
Duplex Suite	79660 AUD pp



Wild Earth Travel

Small Ships, Big Adventures

wildearth-travel.com

info@wildearth-travel.com

SPECIAL OFFERS

Online prices reflect the current brochure fare savings of up to 30%. Prices may change based on demand. Terms and conditions apply. This special offer is subject to availability. Please contact us for more details.

Wild Earth Travel
Small Ships, Big Adventures

0800 945 3327 (within New Zealand) | +64 (0) 3 365 1355 | **1800 107 715** (within Australia)

info@wildearth-travel.com | wildearth-travel.com