

# Wild Earth Travel

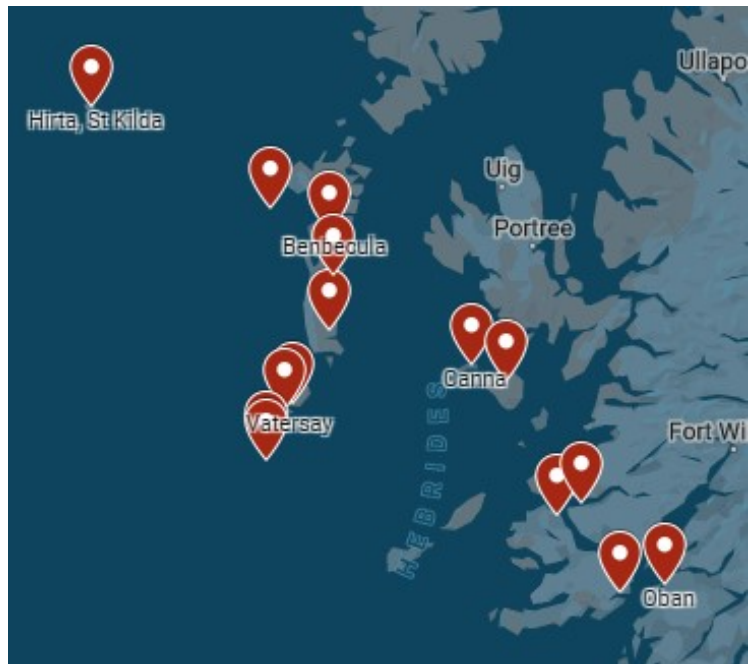
*Small Ships, Big Adventures*

[wildearth-travel.com](http://wildearth-travel.com)

[info@wildearth-travel.com](mailto:info@wildearth-travel.com)

## ST KILDA: A WILDLIFE CRUISE TO THE SCOTTISH OUTER HEBRIDES

This wonderful, 11 or 12 day, Outer Hebridean cruise will, if the weather is kind, give us time to explore fabulous St Kilda; the remote Monach Isles; many dramatic islands of the Outer Hebrides; and the spectacular Small Isles. Our starting point is Oban, the gateway to the isles. Our sea adventure vessels will anchor in scenic, lonely islands, in tranquil bays and, throughout the trip, we see incredible wildlife - soaring sea and golden eagles, many species of sea birds, basking sharks, orca and minke whales, porpoises, dolphins and seals. Our ultimate destination is Village Bay, Hirta, on the archipelago of St Kilda - a UNESCO world heritage site. Hirta is the largest of the four islands in the St Kilda group and was inhabited for some 2000 years before the villagers were evacuated in 1930, never to return. The sea cliffs (the highest in the UK) of the St Kilda islands rise dramatically out of the Atlantic and are the protected breeding grounds of many different sea bird species (gannets, fulmars, Leach's petrel, which are hunted at night by giant skuas, and puffins). These thousands of seabirds were once an important source of food for the islanders. The breathtaking islands of Soay and Boreay have rare, ancient species of feral sheep and the St Kilda wren and field mouse are both unique sub species. Travelling back from St Kilda, we could stop at a remote anchorage on the Monach or Heisker islands, which lie some five miles west off North Uist and are famous for their wild flowers in the Machair, sandy white beaches and for a huge grey seal colony. Throughout the trip we will explore the many wonderful, breathtaking islands of the Outer Hebrides and the Small Islands.



### ITINERARY

#### Days 1 - 11 Outer Hebrides

**Oban:** Your departure point will be Oban (Dunstaffnage Marina), the gateway to the Hebridean isles. After a short introduction to life on board our small ship we will set sail to our first destination. Afternoon tea will be served en-route.

**Tobermory:** One of the most picturesque towns in the Hebridean Isles with its famous whisky distillery and colourful waterfront. You can wander along the streets, visit the delightful local museum, perhaps watch a pipe band, admire the wooden fishing boats and take in the long history of this lovely village.

**Rum, the Small Isles:** Rum Island is a National Nature Reserve and famous for its herds of red deer and sheer sea cliffs which are home to nesting sea eagles.

**Canna, the Small Isles:** Canna is possibly the most beautiful of all the

Wild Earth Travel

*Small Ships, Big Adventures*

0800 945 3327 (within New Zealand) | +64 (0) 3 365 1355 | 1800 107 715 (within Australia)

[info@wildearth-travel.com](mailto:info@wildearth-travel.com) | [wildearth-travel.com](http://wildearth-travel.com)

# Wild Earth Travel

*Small Ships, Big Adventures*

**wildearth-travel.com**

**info@wildearth-travel.com**

Small islands. There are seabirds galore on the island's high sea cliffs - puffins, shags, razorbills, black guillemots, Manx shearwaters - and breeding there, in the high crags, are sea eagles. There are two lovely beaches, three churches, a tiny ruined castle and a population of less than 20! A short climb up Compass Hill gives wonderful views of Skye and our destination, the islands of the Outer Hebrides. Castlebay, Barra: Castlebay is a little village on the island of Barra of the Outer Hebrides. Castlebay was where much of the film Whisky Galore was made about the WW II stranding of the S.S. Politician in Eriskay Sound with her cargo of 260,000 whisky bottles! Castlebay was once an important herring curing station and near our anchorage, surrounded by water, is Kisimul Castle, the ancient seat of the MacNeils of Barra. Berneray: On the way to Berneray, sailing south from Barra, we pass the spectacular uninhabited islands of Sandray, Pabbay and Mingulay. We clearly see the derelict crofts and abandoned house on Mingulay as we pass its Village Bay. If there is not too much Atlantic swell we return north after a circumnavigation of Berneray, passing under the cliffs of famous Barra Head lighthouse. Vatersay: Anchorage off the beautiful sweeping beach and sand dunes of Vatersay. Hirta, St Kilda: If the weather is kindly we up-anchor early and head out through the Sound of Pabbay for Hirta, St Kilda. Two nights at anchor on Hirta and a day ashore. Monach Islands: On the return from Hirta we can anchor off the magical Monach Islands: Ceann Ear, Ceann Iar and Shinish. The extensive sand dunes are perfect for beach landings by tender and the fairly flat landscape makes easy walking, but with breathtaking views. The islands are all linked at low tide with white sandy beaches and turquoise blue sea surrounding them; an idyllic landscape. Lochboisdale, South Uist: If the Atlantic is being too unfriendly for St Kilda, from Barra we will head north, up the island chain, pass the Sound of Barra and the islands of Hellisay and Gighay, to our next quiet anchorage in Lochboisdale on South Uist. We can explore the incredible endless beaches and flower-rich Machair of the islands of South Uist, Benbecula and North Uist. Loch Skipport, South Uist: We will cruise along mountainous, eastern island shores towards the remote and beautiful anchorage Loch Skipport - one of the classic Hebridean anchorages, dominated by wild Hecla, South Uist's second highest mountain (606m). Loch Drumbuie: Just south of Oronsay island, another Inner Hebridean island, lies secluded Loch Drumbuie. A squeeze between high sided cliffs and we are in a perfectly sheltered anchorage. We can spend a tranquil night here. Loch Spelve: The anchorage in this sheltered loch, which is surrounded by an ancient oak forest, gives us unparalleled views of the mountains of Mull. There are resident otters along its shoreline.

## Please Note:

Itineraries are subject to change.

Wild Earth Travel

*Small Ships, Big Adventures*

**0800 945 3327** (within New Zealand) | +64 (0) 3 365 1355 | **1800 107 715** (within Australia)

info@wildearth-travel.com | **wildearth-travel.com**



# Wild Earth Travel

*Small Ships, Big Adventures*

**wildearth-travel.com**

**info@wildearth-travel.com**

## YOUR SHIP: GEMINI EXPLORER

<b>YOUR SHIP:</b>	<b>Gemini Explorer</b>
<b>VESSEL TYPE:</b>	<b>Small Ship</b>
<b>LENGTH:</b>	<b>72 feet / 21.9 meters</b>
<b>PASSENGER CAPACITY:</b>	<b>8</b>
<b>BUILT/REFURBISHED:</b>	<b>1974 / 2020</b>

The new mini cruise ship is a historic, converted cruising lifeboat that once roamed the Western Approaches and was involved in the storm of the ill-fated 1979 Fastnet Race. Gemini Explorer was built in 1974 in Bideford Shipyard as the \_City of Bristol\_ (70-003), one of three, Clyde class, cruising lifeboats with an extended offshore range of 1700 miles. She is powered by two powerful Gardner diesel engines and she will achieve speeds of up to twelve knots. The Gemini Explorer entered service at the Clovelly Lifeboat Station on the North Devonshire coast and, after saving 44 lives, was finally retired in 1989.

Since then, after extensive re-fits and modifications (including a new galley, high bulwarks, viewing top deck, en-suite accommodation and a well lit saloon), she has been converted to a mini cruise ship and today sails as the \_Gemini Explorer\_. However, there are parts of the insides of the vessel that have been kept in their original state to give an exciting insight in to role she once played as a cruising lifeboat.

As a mini cruise ship she has voyaged as far away as Greenland and, for the last 10 years, sailed as a charter vessel on the east coast of Scotland. In 2020 after a further refit and upgrade she will be sailing the beautiful islands and sea lochs of Scotland's

west coast as part of St Hilda Sea Adventures little fleet.

The deck saloon is where everyone dines and socialises and where everyone enjoys a convivial atmosphere that is encouraged by shipboard life aboard this ex-cruising lifeboat.

Cabins are warm and comfortable with eight berths for our guests. In the forward part of the vessel there is a double en-suite, a twin en-suite and single en-suite. In the aft part of the vessel there is a cabin which has a one double bed and two single berths. We are happy to offer this cabin to two guests only, without supplement. This aft cabin shares the bathroom with the two crew.

All en-suites and the bathroom have a washbasin, toilet and shower. All cabin linen and towels are supplied.

There is an upper viewing deck complete with teak benches and perfect for spotting wildlife and relaxing. You also have some deck space to embark your own equipment such as kayaks and paddleboards. You will also be able to use the onboard two person sea kayak.



sea kayak.

Wild Earth Travel

*Small Ships, Big Adventures*

**0800 945 3327** (within New Zealand) | +64 (0) 3 365 1355 | **1800 107 715** (within Australia)

info@wildearth-travel.com | **wildearth-travel.com**

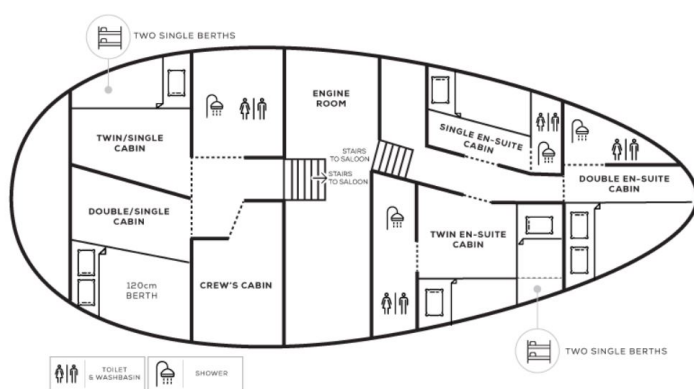
# Wild Earth Travel

*Small Ships, Big Adventures*

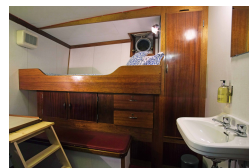
[wildearth-travel.com](http://wildearth-travel.com)

[info@wildearth-travel.com](mailto:info@wildearth-travel.com)

## INSIDE YOUR SHIP



Double / Twin Cabin En-suite



Single Cabin



Single Cabin En-suite



Single Cabin En-suite



Twin / Double Cabin En-suite



Twin Cabin



Twin Cabin Semi En-suite



Wild Earth Travel

*Small Ships, Big Adventures*

0800 945 3327 (within New Zealand) | +64 (0) 3 365 1355 | 1800 107 715 (within Australia)

[info@wildearth-travel.com](mailto:info@wildearth-travel.com) | [wildearth-travel.com](http://wildearth-travel.com)



# Wild Earth Travel

*Small Ships, Big Adventures*

**wildearth-travel.com**

**info@wildearth-travel.com**

## PRICING

### 25-Jun-2025 to 05-Jul-2025

Twin Cabin En-suite	3600 GBP pp
Double Cabin adjacent En-suite	3800 GBP pp
Double Cabin En-suite	4050 GBP pp

### 27-Jun-2025 to 07-Jul-2025

Single Cabin	3200 GBP pp
Twin Cabin Semi En-suite	3400 GBP pp
Double / Twin Cabin En-suite	3600 GBP pp

### 05-Jul-2025 to 15-Jul-2025

Single Cabin	2450 GBP pp
Twin Cabin	2700 GBP pp
Single Cabin En-suite	3600 GBP pp
Twin / Double Cabin En-suite	3600 GBP pp

### 29-Jul-2025 to 08-Aug-2025

Single Cabin	3200 GBP pp
Twin Cabin Semi En-suite	3400 GBP pp
Double / Twin Cabin En-suite	3600 GBP pp

### 22-May-2026 to 01-Jun-2026

Single Cabin	2500 GBP pp
Twin Cabin	2750 GBP pp
Single Cabin En-suite	3800 GBP pp
Twin / Double Cabin En-suite	3800 GBP pp

### 01-Jul-2026 to 11-Jul-2026

Single Cabin	3250 GBP pp
Twin Cabin Semi En-suite	3500 GBP pp
Double / Twin Cabin En-suite	3800 GBP pp

### 05-Jul-2026 to 15-Jul-2026

Single Cabin	2500 GBP pp
Twin Cabin	2750 GBP pp
Single Cabin En-suite	3800 GBP pp
Twin / Double Cabin En-suite	3800 GBP pp

### 08-Jul-2026 to 18-Jul-2026

Double Cabin adjacent En-suite	3600 GBP pp
Twin Cabin En-suite	3600 GBP pp
Double Cabin En-suite	4000 GBP pp

Wild Earth Travel

*Small Ships, Big Adventures*

**0800 945 3327** (within New Zealand) | +64 (0) 3 365 1355 | **1800 107 715** (within Australia)

info@wildearth-travel.com | wildearth-travel.com