

Wild Earth Travel

Small Ships, Big Adventures

wildearth-travel.com

info@wildearth-travel.com

SPIRIT OF SCOTLAND EXPEDITION CRUISE

This extraordinary journey through the British Isles and beyond offers an unforgettable exploration of rich history, breathtaking landscapes, and vibrant cultures. Begin your adventure in Aberdeen, Scotland, a city that balances old-world charm with modern energy, before venturing to remote and picturesque islands like Fair Isle, Papa Stour, and Foula. These serene havens brim with wildlife, including puffins, Arctic terns, and great skuas, while their small communities preserve timeless traditions. The Orkney and Hebrides islands reveal ancient marvels like the Ring of Brodgar, Skara Brae, and the Calanais Standing Stones, alongside lively towns such as Kirkwall and Stornoway, where artisan crafts and Gaelic culture thrive.

Continuing to UNESCO World Heritage sites like St. Kilda and dramatic landscapes like the Cuillin Hills of Skye, this journey caters to photographers, hikers, and birdwatchers alike. Discover historical treasures such as Iona Abbey and Fingal's Cave on Staffa, and immerse yourself in the stories of Scottish nobility at Loch Finlaggan. Crossing to Tory Island in Ireland, experience the charm of small-island Gaelic life and its vibrant art scene. Conclude in Greenock, Scotland, with a rich sense of the maritime heritage that connects these remarkable destinations.



ITINERARY

Day 1: Aberdeen, Scotland

Begin Your Adventure

Many of Aberdeen's historic stone buildings are made of locally quarried granite; high in mica, they can sparkle like silver. The city is famed for its forty-five parks, gardens, and floral displays.

In recent years, Aberdeen has become the gateway to the North Sea oil industry, but the city retains its old-world charm and is a wonderful place for a walkabout.

Wild Earth Travel

Small Ships, Big Adventures

0800 945 3327 (within New Zealand) | +64 (0) 3 365 1355 | **1800 107 715** (within Australia)

info@wildearth-travel.com | **wildearth-travel.com**

Wild Earth Travel

Small Ships, Big Adventures



wildearth-travel.com

info@wildearth-travel.com

Day 2: Fair Isle

Enjoy Birdwatching and Serene Island Culture

Journey to charming Fair Isle, once a Viking hub and now an idyllic island colony of artists and shepherds.

Keep your binoculars handy to spot some of the 350 bird species that the island boasts, including puffins and great skuas in substantial numbers.

Take a tour of the local museum, dedicated to preserving the island's heritage.

Day 3: Papa Stour and Foula

Take a Zodiac Cruise

Explore the rugged coastline and spot flourishing marine and bird life among Papa Stour's cliffs, caves, sea stacks, and blowholes on a Zodiac cruise.

Call in at sweet and petite Foula, home to just a few dozen folks, many of whom preserve traditional methods of agriculture and subsistence.

Keep an eye out for the Arctic terns, red-throated divers, and great skuas that may be found here.

Day 4: Orkney

Visit the Heart of Neolithic Orkney UNESCO World Heritage Site

Wander through the 4,000-year-old standing stone circle, the Ring of Brodgar, a UNESCO World Heritage Site. Step back 5,000 years to the Neolithic village of Skara Brae. Considered one of the most important Neolithic ruins in Europe today, wander the well-preserved stone houses and learn what daily life was like here.

Tour the Hall of Clestrain, childhood home of Arctic explorer John Rae.

In Kirkwall, let yourself be captivated by the city's sights, dominated by the massive St. Magnus Cathedral dating back to 1137.

Experience its lively pubs, vibrant music scene, fabulous shopping opportunities, and thriving artisan community.

Day 5: Stornoway, Lewis

Witness Modern and Ancient Scottish Culture

Visit Stornoway on the Isle of Lewis, a Gaelic stronghold and the capital of the largest of the Hebrides. Browse charming shops to purchase the island's famous tweed.

Meander through one of Britain's most important Stone Age sites, the Calanais Standing Stones, which are said to be giants who were punished by St. Kieran for refusing to convert to Christianity.

Experience the living history at Gearrannan Blackhouse Village, where you can learn about a typical crofting township of the last century. Explore the blackhouses and traditional activities, including the weaving of the famous Harris Tweed.

Discover Dun Carloway Broch, a uniquely Scottish site perched on a rocky mound. See this ancient structure, standing at an impressive nine metres tall.

Day 6: St. Kilda

Journey to St. Kilda UNESCO World Heritage Site

The archipelago known as St. Kilda was inhabited until 1930. Today, St. Kilda is a UNESCO World Heritage Site, protecting fascinating ruins as well as natural heritage features.

Seabirds thrive on the island of Hirta, which is also home to feral sheep left by the departing islanders. Enormous cliffs offer dramatic ocean views for our hikers!

Day 7: Isle of Skye

Enjoy Photography, Birdwatching, and Hiking

Whether you're a hiker, photographer, or birder, you will love a visit to Skye.

Cruise the southwestern shore of this large island keeping a keen eye out for species like common sandpiper, oystercatcher, gannets, and razorbills. Delight in the opportunity to witness these remarkable creatures in their natural environment and add unique sightings to your birdwatching list.

Wild Earth Travel

Small Ships, Big Adventures

0800 945 3327 (within New Zealand) | +64 (0) 3 365 1355 | **1800 107 715** (within Australia)

info@wildearth-travel.com | **wildearth-travel.com**

Wild Earth Travel

Small Ships, Big Adventures



wildearth-travel.com

info@wildearth-travel.com

Immerse yourself in the beauty of Skye's mountainous landscapes and choose the level of activity that suits you best for a walk, hike, or trek among the awe-inspiring Cuillin Hills, one of Britain's finest mountainscapes.

Day 8: Iona and Staffa

Make a Pilgrimage to Iona Abbey and Fingal's Cave
Visit Iona, where St. Columba established his monastery--the burial place of kings.

Admire the beautifully restored Iona Abbey complex, which preserves two outstanding crosses dating as far back as the eighth century.

Take a Zodiac cruise at the Isle of Staffa, famed for basaltic formations and numerous caves, the best-known being Fingal's Cave.

See for yourself why it is originally known in Gaelic as "the melodious cave" and provided the inspiration for Mendelssohn's overture, The Hebrides.

Day 9: Islay

Tour the Loch Finlaggan Historic Site
Explore the renowned Loch Finlaggan Historic Site, tucked away in the enchanting Islay, also known as the Queen of the Hebrides. Immerse yourself in the rich history and heritage of the region. Indulge in the stories of Scottish nobility at the ancient seat of the Lord of the Isles and Clan Donald. Delve into its captivating past and marvel at the artefacts on display in the site's museum.

Day 10: Tory Island, Ireland

Get a Glimpse Into Small Island Life in Ireland
Toraigh (Tory Island) lies nearly fifteen kilometres off the northwest coast of County Donegal. The main spoken language on the island is Gaelic. Since the 1950s, the island has been home to a small community of artists, and has its own art gallery.

Day 11: Greenock/Glasgow, Scotland

Wave a Fond Farewell

Greenock has a rich maritime history and was a major shipbuilding and import centre. Here, we'll disembark and depart via coach to Glasgow.

Please note:

Itineraries are subject to change.

Wild Earth Travel

Small Ships, Big Adventures

0800 945 3327 (within New Zealand) | +64 (0) 3 365 1355 | **1800 107 715** (within Australia)

info@wildearth-travel.com | **wildearth-travel.com**

Wild Earth Travel

Small Ships, Big Adventures

wildearth-travel.com

info@wildearth-travel.com

YOUR SHIP: EXPLORIS ONE

YOUR SHIP:	Exploris One
VESSEL TYPE:	Expedition Cruise
LENGTH:	108 metres / 354 feet
PASSENGER CAPACITY:	144
BUILT/REFURBISHED:	1989/2018/2023

Capacity for 144 passengers

Purpose-built for expedition travel

Design combines bold exploration with relaxed comfort and elegance

Well-suited for polar, temperate, and tropical environments

Life on Board

Food and Drink

Aboard the Exploris One, dining is an adventure! Top chefs craft dishes blending local flavours with international favourites, served in cozy open-seating spaces--indoors or al fresco. Start your day with hearty breakfasts and lunches to fuel your explorations. At dinner, savour globally inspired a la carte meals catering to seafood lovers, vegetarians, and everyone in between--don't forget the freshly made desserts! Dietary needs? Our team's got you covered with advance notice. With 24/7 beverages, from specialty coffee to fine wine, from beer to cocktails, every bite and sip celebrates your journey. Bon appetit!

Life on Board

Wake up aboard the Exploris One, where breathtaking ocean views from your cabin spark your inner poet. This intimate ship,

with space for 144 adventurers is designed to take you to the planet's most remote corners in style. Blending cozy comforts with epic exploration, it's perfect for you thrill-seekers that don't want to leave your barista behind. Learn from our expert expedition team, known for their deep knowledge and quirky charm. Spot seabirds from panoramic decks, enjoy inspiring talks, hands-on workshops, live music, or simply unwind in the ship's welcoming spaces.

From Ship to Shore

Heading ashore on the Exploris One is part of the adventure! With a fleet of trusty Zodiacs, you'll easily reach remote beaches, wildlife hotspots, and stunning coastlines. Designed for exploration, these versatile crafts get you right into the action. Our expert team ensures smooth, safe transfers, so you can focus on the thrill of discovery. Whether stepping onto untouched shores or cruising past playful seals, the journey is as exciting as the destination. On the Exploris One, every shore excursion is an adventure waiting to unfold!

Facilities

The Explorer's Table - Grand Restaurant

Enjoy exceptional dining in a spacious setting where gourmet meals and regional specialties are served with care and creativity.

The Outside Grill

Savour fresh-grilled favourites while taking in stunning views and the invigorating sea breeze on this open-air deck dining space.

Learning Lounge

Engage with experts and fellow travellers in this comfortable venue designed for insightful presentations and enriching talks.

Wild Earth Travel

Small Ships, Big Adventures

0800 945 3327 (within New Zealand) | +64 (0) 3 365 1355 | **1800 107 715** (within Australia)

info@wildearth-travel.com | **wildearth-travel.com**

Wild Earth Travel

Small Ships, Big Adventures

wildearth-travel.com

info@wildearth-travel.com

Main Lounge

Relax and socialize in this welcoming hub, perfect for unwinding, sharing stories, or enjoying evening entertainment.

Observation Lounge

Take in sweeping views and quiet contemplation in this serene space.

Fitness Centre

Stay active in the fully equipped fitness area, featuring modern equipment and ample space to maintain your workout routine while at sea.

Sauna

Recharge and unwind in the soothing warmth of our on-board sauna, perfect after a day of exploration.

Massage Room

Massages offered to provide relaxation and comfort, with appointments available throughout each journey.

Two Outdoor Jacuzzis

Soak in warm, bubbling waters while enjoying expansive views and refreshing ocean breezes.

Gift Shop

Browse a selection of unique items and essentials, perfect for souvenirs or travel needs.

Additional Facilities

Panoramic bridge

Bridge deck

Elevators to all decks

Steam Room

Complimentary launderette

Reception

Ready room

Medical centre



ical centre

Wild Earth Travel

Small Ships, Big Adventures

0800 945 3327 (within New Zealand) | +64 (0) 3 365 1355 | **1800 107 715** (within Australia)

info@wildearth-travel.com | **wildearth-travel.com**

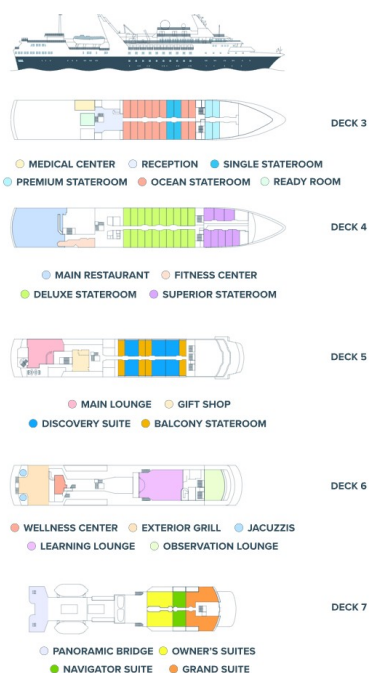
Wild Earth Travel

Small Ships, Big Adventures

wildearth-travel.com

info@wildearth-travel.com

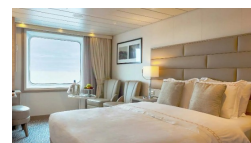
INSIDE YOUR SHIP



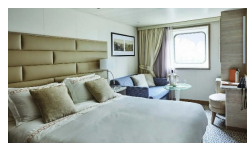
Cabin Category 1



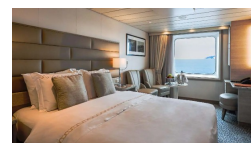
Cabin Category 2



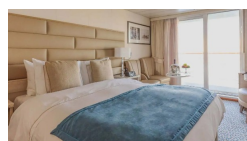
Cabin Category 3



Cabin Category 4



Cabin Category 5



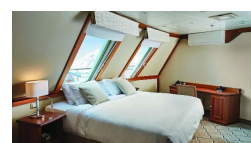
Cabin Category 6



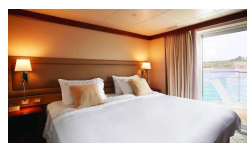
Cabin Category 7



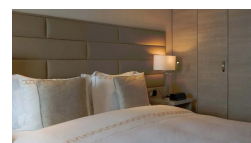
Cabin Category 8



Cabin Category 9



Cabin Category A



Wild Earth Travel

Small Ships, Big Adventures

wildearth-travel.com

info@wildearth-travel.com

PRICING

13-Jun-2026 to 23-Jun-2026

Cabin Category 1	12995 USD pp
Cabin Category 2	13495 USD pp
Cabin Category 3	13995 USD pp
Cabin Category 4	14895 USD pp
Cabin Category 5	15895 USD pp
Cabin Category 6	17395 USD pp
Cabin Category 7	17895 USD pp
Cabin Category 8	19395 USD pp
Cabin Category A	19995 USD pp
Cabin Category 9	21195 USD pp

Wild Earth Travel

Small Ships, Big Adventures

0800 945 3327 (within New Zealand) | +64 (0) 3 365 1355 | **1800 107 715** (within Australia)

info@wildearth-travel.com | **wildearth-travel.com**