

# Wild Earth Travel

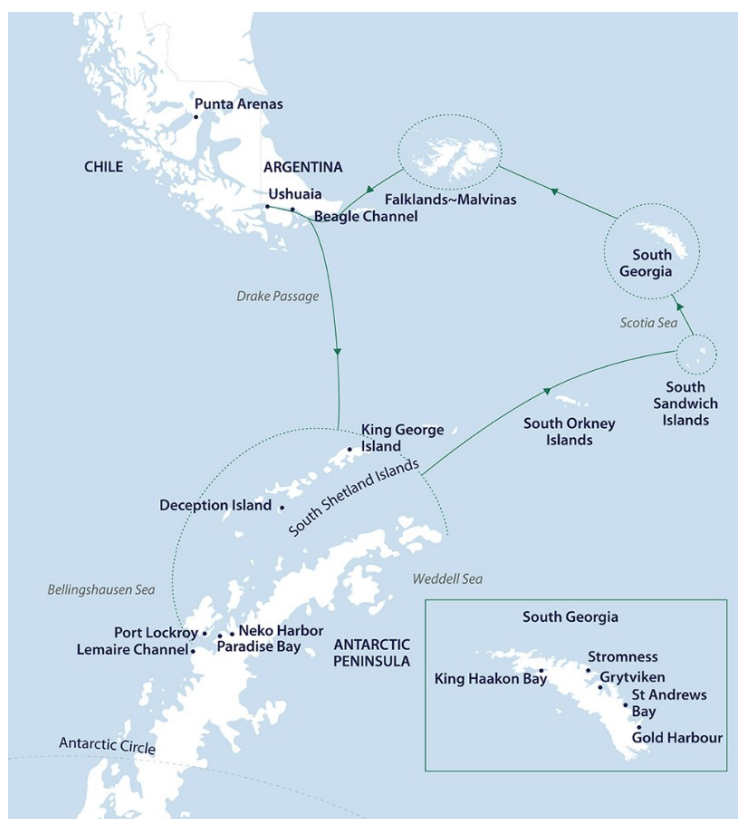
*Small Ships, Big Adventures*

**wildearth-travel.com**

**info@wildearth-travel.com**

## SOUTH GEORGIA & ANTARCTIC ODYSSEY FEATURING THE SOUTH SANDWICH ISLANDS

On this epic voyage, not only will you explore the famed white continent, discover the Falklands~Malvinas, encounter the wildlife haven in South Georgia, you will also sail to the South Sandwich Islands, a chain of seldom-visited volcanic islands located 740 km (460 miles) south-east of South Georgia. Simply reaching these wild, far-flung islands is an adventure.



### ITINERARY

#### Day 1 Arrive Ushuaia

Arrive in Ushuaia, where you will be met by a representative of Aurora Expeditions and transferred with your fellow expeditioners to your assigned pre-voyage hotel. If you are already in Ushuaia, we ask you to make your way to your hotel. Check-in is from 3.00 pm. This afternoon, visit the Aurora

Wild Earth Travel

*Small Ships, Big Adventures*

**0800 945 3327** (within New Zealand) | +64 (0) 3 365 1355 | **1800 107 715** (within Australia)

info@wildearth-travel.com | **wildearth-travel.com**



# Wild Earth Travel

*Small Ships, Big Adventures*

**wildearth-travel.com**

**info@wildearth-travel.com**

Expeditions hospitality desk in the hotel lobby, between 3.00 pm and 7.00 pm, to collect your luggage tags, and confirm if you wish to join our Beagle Channel and Isla de Los Lobos Cruise (sea lion island) tomorrow. Our team will confirm details regarding your embarkation day, answer any questions and provide you with information on where to dine or purchase last minute items.

Expeditioners arriving after 7.00 pm will find a welcome pack waiting for them at check-in. We ask you to visit our hospitality desk tomorrow between 8.00 am - 10.00 am.

The remainder of your time is at leisure. All meals today are at your own expense.

Assigned accommodation: To be confirmed

## Day 2 Embarkation

This morning, enjoy breakfast and check-out. Please ensure your cabin luggage is fitted with cabin tags clearly labelled with your name and cabin number. By 11.00 am take your cabin luggage to hotel reception, prior to, or at check-out. Your luggage will be stored and transferred directly to the port for clearance, to be placed in your cabin ahead of your arrival on board. Please keep any valuables or personal items with you throughout the day.

Your morning is at leisure to explore Ushuaia.

Those wishing to join our afternoon catamaran cruise, meet back at the hotel lobby at 12.15 pm ready to transfer to the port at 12.30 pm. Here we board our catamaran and sail the Beagle Channel, towards the city's iconic Les Eclaireurs Lighthouse. Crossing the Bridges Archipelago we'll slow down to watch colonies of sea lions and imperial cormorants sun themselves on the rocky outcrops, while gulls, rock cormorants, skuas, petrels, albatrosses and cauqueses are often sighted. Our cruise offers panoramic views of the city and the surrounding mountain range, in addition to hearing tales of the people and communities of the region.

Alternatively, enjoy your day at leisure and meet at your hotel lobby at 3.00 pm, or 3.30 pm from the meeting point at the parking lot near the pier (details will be given by our ground staff at the hotel), to be transferred to the pier for embarkation.

Once onboard, you'll have time to settle into your cabin before our important mandatory briefings. As the ship pulls away from port, we'll gather on the deck to commence our adventure with spectacular views over Ushuaia and Tierra del Fuego.

This evening get to know your fellow expeditioners and friendly expedition team and crew at a welcome dinner to celebrate the start of a thrilling adventure to Antarctica.

## Days 3-4 Drake Passage Crossing

As we commence the Drake Passage crossing, we make the most of our time getting comfortable with the motions of the sea. Our expedition team prepare you for our first landing with important wildlife guidelines and biosecurity procedures and start our lecture program to help you learn more about Antarctica's history, wildlife and environment.

Our wildlife experiences begin as we enjoy watching and photographing the many seabirds, including majestic albatrosses and giant petrels following our vessel. On sea days, you can enjoy the facilities on board the vessel including the gym, sauna and jacuzzis or relax in one of the observation lounges.

Nearing the South Shetland Islands and the tip of the Antarctic Peninsula on the afternoon of day four, the excitement is palpable with everyone converging on one of the observation decks watching for our first iceberg. The ocean takes on a whole new perspective once we are below the Antarctic Convergence and are surrounded by the surreal presence of floating ice sculptures. The memory of your first big iceberg sighting is likely to remain with you for a lifetime. Time and weather permitting, we may attempt our first landing in Antarctica by late afternoon.

## Days 5-8 Antarctic Peninsula

It's almost impossible to describe the feeling of arriving in Antarctica. Spotting your first iceberg and taking a deep breath of some of the most fresh, crisp air on earth is an experience that will stay with you forever.



# Wild Earth Travel

*Small Ships, Big Adventures*

**wildearth-travel.com**

**info@wildearth-travel.com**

Once we arrive, the western side of the Antarctic Peninsula and the South Shetland Islands are ours to explore, and we have a host of choices available to us. Your experienced expedition team, who have made countless journeys to this area, will use their expertise to design your voyage from day to day, choosing the best options based on the prevailing weather, ice conditions and wildlife opportunities.

We generally make landings or Zodiac excursions twice a day. You will want to rug up before joining Zodiac cruises along spectacular ice cliffs or among grounded icebergs, keeping watch for whales, seals and porpoising penguins. Zodiacs will also transport you from the ship to land, where you can visit penguin rookeries, discover historic huts and explore some of our favourite spots along the peninsula.

While ashore we aim to stretch our legs, wandering along pebbly beaches or perhaps up snow-covered ridgelines to vantage points with mountains towering overhead and ice-speckled oceans below. If you have chosen an optional activity, you will have the option to do that whenever conditions allow, and of course keen polar plungers will have the chance to fully immerse themselves in polar waters - conditions permitting!

In addition to Zodiac cruises and shore excursions, we may ship cruise some of the narrow, dramatic straits separating offshore islands from the mainland, or linger in scenic bays to marvel at sculptural icebergs and photograph spectacular scenery. This is a great time to enjoy the observation lounge or make your way to the bridge (open at the Captain's discretion) for uninterrupted views of Antarctica in all its splendour. Keep an ear out for the creak and deep rumble of glaciers as they carve into the sea. Take a quiet moment to experience the wonder of this incredible white continent.

## Days 9-11 At Sea

As we sail towards the South Sandwich Islands, enjoy informative and entertaining lectures from our expedition team and learn about the wildlife, history and culture of the places that you will visit on the voyage. You may want to use the sauna and jacuzzis, stay active in the gym or borrow a book from our well-stocked library and relax in one of the many observation areas on board the vessel.

## Days 12-13 South Sandwich Islands

On Captain James Cook's second voyage of discovery (1772-1775), he circumnavigated the globe in high southern latitudes, without seeing land, casting doubt on the existence of the Antarctic continent, which at that time was still unknown. It was during this voyage Cook discovered the South Sandwich Islands and landed on South Georgia Island, describing them as, 'Lands doomed by Nature to perpetual frigidness: never to feel the warmth of the sun's rays; whose horrible and savage aspects I have not words to describe.'

He named the South Sandwich Islands for Lord Sandwich, they are considered together with South Georgia, as a UK Dependent Territory (see above), and are uninhabited. Although Cook sighted a number of the islands, several more were not discovered until Bellingshausen visited in 1819.

Located about 740 km (460 mi) southeast of South Georgia, the islands form a chain some 350 km (220 mi) long, comprising 11 large and several smaller islands with a total area of about 600 sq. km (230 sq. mi). Most are ice-capped, and the tallest peak, on Montagu Island, reaches 1,370 m (4,500 ft). The climate is cold, with frequent snow and strong winds.

The islands are volcanic in origin and some remain active. The island of Zavodovski, for instance, appears in constant eruption and reeks of rotten eggs (the volcano itself is named Mt. Asphyxia), while the islands of Visokoi, Candlemas, Saunders, and Bellingshausen all show definite signs of activity. Bristol, Cook, and Thule islands are heavily glaciated and show no signs of warmth or activity. All the islands are steep sided above the water and fall away rapidly into deep water - more than 1,500 m (5,000 ft).

In this wild environment, nature determines what we are able to do and see. If conditions allow, we hope to explore the dramatic coastline of some of the islands on board the ship or by Zodiac. Little is known about these islands, although the British Antarctic Survey has undertaken some limited biological and geological work there, mainly in the 1960s. Vegetation is very sparse. But there's at least one extraordinary wildlife spectacle: Zavodovski Island supports a chinstrap penguin colony that numbers around one million penguins on its steep volcanic slopes. Those who have seen this massive penguin colony speak of it with awe.

## Day 14 At sea

**Wild Earth Travel**

*Small Ships, Big Adventures*

**0800 945 3327** (within New Zealand) | +64 (0) 3 365 1355 | **1800 107 715** (within Australia)

info@wildearth-travel.com | wildearth-travel.com





# Wild Earth Travel

*Small Ships, Big Adventures*

**wildearth-travel.com**

**info@wildearth-travel.com**

Reflect over a few drinks on the adventures of your time spent in the South Sandwich Islands and hear tales of exploration and discovery from our team of onboard experts as we prepare for our exciting days ahead in South Georgia.

## Days 15-18 South Georgia

Your experienced expedition team will use their local knowledge to plan your voyage from day to day, choosing the best options based on the prevailing weather, sea state and wildlife opportunities.

Remember to layer up before joining Zodiac excursions that may zip into craggy coves and along the rocky coastline in search of nesting penguins, seal haul-outs and bird cliffs. Remember to keep an eye out for South Georgia's kelp forests as well - these remarkable underwater ecosystems are quite mesmerising as their fronds sway back and forth on the water's surface.

Our Zodiacs will also transport ashore, where you can visit some of the largest king penguin colonies on Earth, take a guided walk among fur seals and elephant seals (making sure you listen to your guides and keep your distance!) and wander along pebbled streams and grassy glacial outwash plains. We also hope to visit the remnants of South Georgia's thriving whaling stations and pay our respects to Sir Ernest Shackleton, whose incredible voyage of survival is synonymous with this island. If you have chosen an optional activity, you will have the option to do that whenever conditions allow.

In addition to Zodiac excursions and shore excursions, we may ship cruise through fjords with towering cliffs of ancient stone, or into deeply indented bays towards dramatic glacier fronts. This is a great time to find a comfy spot in the observation lounge or make your way to the bridge (open at the Captain's discretion) to enjoy uninterrupted views of South Georgia's majestic coast.

## Days 19-20 At Sea

As we sail towards the Falklands~Malvinas, there is plenty to keep you occupied on board.

Our expedition team will continue to share their wealth of knowledge about the wildlife, history and natural world as part of the onboard lecture series. You will have ample time to enjoy observing seabirds from the stern of the ship, keeping a close watch for whales and other marine wildlife, or simply enjoying the many facilities available to you on the ship.

## Day 21 At Sea / Falklands~Malvinas

Sea and weather conditions will determine our arrival time into the Falklands~Malvinas today.

The Falklands~Malvinas comprises two large islands (East and West Falkland), with over 700 islands scattered off the coast. All but seven of these are uninhabited, with windswept coastlines, white sand beaches and crystal-clear water. These beautifully barren islands are true wildlife havens, sheltering an impressive diversity of birdlife, including the largest black-browed albatross colony on earth. The cold, nutrient-rich waters surrounding the islands make this a prime location for spotting marine life.

## Day 22 Falklands~Malvinas

There are many beautiful areas to explore across the Falklands~Malvinas, each offering a unique perspective on this magnificent archipelago. Your experienced expedition team, who have made countless journeys to this area, will use their expertise to design your voyage from day to day, choosing the best options based on the prevailing winds, weather and wildlife opportunities.

We generally make landings or Zodiac excursions twice a day. Even though we are north of the Antarctic Convergence it can be quite chilly here, so you will want to layer up before joining Zodiac cruises into rocky coves or along sea cliffs, keeping watch for seals, sea lions, dolphins and penguins. Zodiacs will also shuttle you from the ship to shore, where you may be able to visit albatross colonies, penguin rookeries and perhaps even have a traditional English 'tea and scones' at a local cottage.



# Wild Earth Travel

*Small Ships, Big Adventures*

**wildearth-travel.com**

**info@wildearth-travel.com**

Conditions permitting, we hope to land in historic Stanley, the capital of the Falklands~Malvinas. This charming town has a distinctly British character, with terraced town houses, pioneer cottages and even an iconic red telephone box! Colourful buildings house cosy cafes, English pubs, souvenir shops, a post office and the fascinating Historic Dockyard Museum, with displays on the maritime history of the Falkland Islands, natural history and links to Antarctica.

## Days 23 At Sea

As we sail towards Ushuaia, you may choose to spend your precious time editing photos, enjoying the onboard facilities, or attend final lectures. Celebrate the end of an unforgettable voyage with newfound friends at a special Captain's farewell dinner.

With lectures and film presentations to complete our Antarctic experience, there is still plenty of time to enjoy the magic of the Southern Ocean and the life that calls it home. There is time for reflection and discussion about what we have seen and experienced. We hope you become ambassadors for the Antarctic region, telling your family, friends and colleagues about your journey to this magical place, advocating for its conservation and preservation so that they might one day visit the region to experience what you have been lucky to see and do here.

## Day 24 Disembark Ushuaia

During the early morning, we cruise up the Beagle Channel, before quietly slipping into dock in Ushuaia, where we will be free to disembark around 8.00 am. Farewell your expedition team and fellow passengers as we all continue our onward journeys, hopefully with a newfound sense of the immense power of nature.

Upon disembarkation, for those continuing their travels in the region, transportation to the hotel will be arranged exclusively for guests who have booked their accommodations through Aurora or for those staying in downtown areas near the port. Expeditioners departing on flights prior to 12:30 pm will be directly transferred to Ushuaia Airport, those with flights after 12:30 pm will

have the opportunity to explore Ushuaia before an afternoon airport transfer, and the transfer procedures and details will be communicated onboard before disembarkation.

Note: At the conclusion of the voyage, we do not recommend booking flights departing Ushuaia prior to 12.00 pm on the day of disembarkation in case there are delays.

Please note:

Itineraries are subject to change.



# Wild Earth Travel

*Small Ships, Big Adventures*

**wildearth-travel.com**

**info@wildearth-travel.com**

## YOUR SHIP: GREG MORTIMER

<b>YOUR SHIP:</b>	<b>Greg Mortimer</b>
<b>VESSEL TYPE:</b>	<b>Expedition</b>
<b>LENGTH:</b>	<b>104 metres</b>
<b>PASSENGER CAPACITY:</b>	<b>132</b>
<b>BUILT/REFURBISHED:</b>	<b>2019</b>

Purpose-built for polar expeditions, the Greg Mortimer combines over 25 years of expedition experience with cutting-edge nautical design. With a capacity of just 132 passengers, the ship offers an intimate, comfortable base for exploring the world's most remote regions while maintaining a focus on multiple landings, flexible itineraries, and a family-like atmosphere.

Designed with the revolutionary ULSTEIN X-BOW™, the ship handles rough seas with ease, offering a smoother ride and lower environmental impact. Hydraulic viewing platforms on Deck 5 provide unobstructed views of wildlife, while dedicated Zodiac launching areas make landings fast and efficient. The ship carries 15 Zodiacs for up to three daily excursions.

For adventurers, a spacious activity platform supports kayaking, climbing, diving and more, with quick gear access via the mudroom and drying areas. The ship is also Polar Code 6 compliant and features advanced safety systems, including backup propulsion and a fully equipped medical centre.

Onboard comforts include large observation decks, a 180° lounge, open bridge policy, and a well-stocked library. Enjoy family-style meals with complimentary drinks, and relax at the

Wellness Centre with a gym, spa, sauna, and massage services. Daily expert-led lectures enrich your journey with insights into nature, wildlife, and local cultures.

The Greg Mortimer offers a modern, safe, and environmentally conscious way to explore the polar regions - with all the comfort and spirit of true adventure.



adventure.

**Wild Earth Travel**  
*Small Ships, Big Adventures*

**0800 945 3327** (within New Zealand) | +64 (0) 3 365 1355 | **1800 107 715** (within Australia)

info@wildearth-travel.com | **wildearth-travel.com**



# Wild Earth Travel

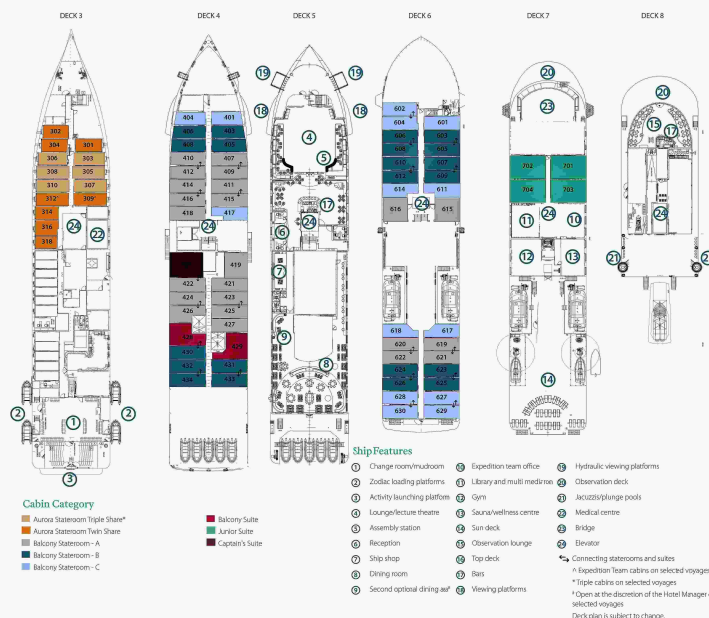
*Small Ships, Big Adventures*

[wildearth-travel.com](http://wildearth-travel.com)

[info@wildearth-travel.com](mailto:info@wildearth-travel.com)

## INSIDE YOUR SHIP

### Deck plan - Greg Mortimer



### Aurora Stateroom Triple



### Aurora Stateroom Twin



### Balcony Stateroom - A



### Balcony Stateroom - B



### Balcony Stateroom - C



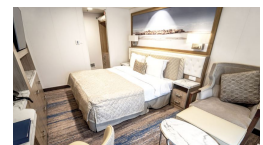
### Balcony Stateroom Superior



### Captain's Suite



### Junior Suite



Wild Earth Travel

*Small Ships, Big Adventures*

0800 945 3327 (within New Zealand) | +64 (0) 3 365 1355 | 1800 107 715 (within Australia)

[info@wildearth-travel.com](mailto:info@wildearth-travel.com) | [wildearth-travel.com](http://wildearth-travel.com)



# Wild Earth Travel

*Small Ships, Big Adventures*



**wildearth-travel.com**

**info@wildearth-travel.com**

## PRICING

**04-Mar-2026 to 27-Mar-2026**

<b>Aurora Stateroom Triple</b>	<b>28895 USD pp</b>
<b>Aurora Stateroom Twin</b>	<b>29795 USD pp</b>
<b>Balcony Stateroom - C</b>	<b>32295 USD pp</b>
<b>Balcony Stateroom - B</b>	<b>33995 USD pp</b>
<b>Balcony Stateroom - A</b>	<b>36595 USD pp</b>
<b>Balcony Stateroom Superior</b>	<b>39995 USD pp</b>
<b>Junior Suite</b>	<b>50095 USD pp</b>
<b>Captain's Suite</b>	<b>59495 USD pp</b>

### Optional extras & upgrades

**Sea Kayaking. From 1745 USD**

**Scuba Diving. From 1295 USD**

**Snorkelling. From 835 USD**

**Paddling. From 640 USD**

**Wild Earth Travel**  
*Small Ships, Big Adventures*

**0800 945 3327** (within New Zealand) | +64 (0) 3 365 1355 | **1800 107 715** (within Australia)

info@wildearth-travel.com | **wildearth-travel.com**