



Wild Earth Travel

Small Ships, Big Adventures

wildearth-travel.com

info@wildearth-travel.com

THE SEYCHELLES SAILING CRUISE (MAY TO OCTOBER)

Isolated in the Indian Ocean and the only mid-ocean islands of granite formation to be found on earth, the Seychelles archipelago is often mentioned in the same breath as the lost 'Garden of Eden.' The highest peaks of a submerged mountain range that broke apart from the supercontinent of Gondwana millions of years ago, the Seychelles' inner islands are the most ancient islands on earth - no other mid-ocean isles of granite formation can be found anywhere else. This curious geological feature was one of several curiosities about the islands that led the famed British General, Charles Gordon, to declare Seychelles the site of the biblical Garden of Eden. Situated some 1,500 kilometers east of mainland Africa, and northeast of the island of Madagascar, this tiny island group boasts a population of just 90,000 inhabitants, with a warm, tropical climate all year-round and some of the most stunningly beautiful beaches in the world. Mahe, the largest island, is home to the majority of the population and represents the archipelago's commercial and transportation hub, with the country's only international airport linking the islands to the rest of the globe. The island is characterised by its towering granite peaks, lush mist forests and dozens of striking coves and beaches.

The second largest island, Praslin, is home to the legendary Vallee de Mai, the UNESCO World Heritage Site where the Coco de Mer grows in abundance. This double coconut, which curiously resembles the shape of a woman's pelvis, was another facet of General Gordon's theory about Seychelles as the Garden of Eden - he believed it to be the real forbidden fruit. La Digue, the third-most populous island, moves at an even slower

pace: bicycles remain the most common mode of transportation, for both its residents and visiting tourists. The huge granite boulders that adorn the coastline at Anse Source D'Argent have led some to believe that it could very well be the most photographed beach in the world. While Mahe, Praslin and La Digue may be the principal islands, dozens of smaller 'satellite' isles nearby offer further opportunity to explore and admire. Every island has a character and charm all of its own, with colorful individual histories and unique natural features, some with steep granite cliffs and others comprising pristine coral atolls. Together, they make up a surprisingly diverse destination of great natural beauty, rare flora and fauna that have been cocooned in isolation for millions of years, and a friendly multi-cultural people eager to welcome you to their shores.

Your safety and comfort are our highest priority. In the event of adverse conditions, all itineraries are subject to change at the captain's discretion. Be sure to bring plenty of coral reef safe sun-screen, a cap or hat and sunglasses - Seychelles is generally warm and sunny throughout the year and the sun's rays can be especially impactful onboard the vessel, due to the reflection from the sea. Bring suitable footwear for walking on deck and on the beach, as well as in shallow water (some island visits require embarking & disembarking from dinghies in shallow water).

There are numerous opportunities to dive on most days of the itinerary, and we can also conduct introductory dives for novices

Wild Earth Travel

Small Ships, Big Adventures

0800 945 3327 (within New Zealand) | +64 (0) 3 365 1355 | **1800 107 715** (within Australia)

info@wildearth-travel.com | **wildearth-travel.com**



and PADI Open Water certification courses. Contact us for dive rates and equipment rental fees.



ental fees.

ITINERARY

Day 1 - Praslin

Embarkation at 10.30hrs from Anse Possession, Praslin, followed by the Captain's welcome briefing. Spend the day at leisure with different water activities in this scenic cove, named for the stone of possession placed in this area by French explorers to stake their claim to the island more than 200 years ago. Final embarkation is at 1700hrs followed by a sunset sail to Curieuse Bay. In the evening, introduce yourself to Creole cuisine with a welcome barbecue onboard.

Day 2 - Curieuse

In the morning disembark at Curieuse for a visit of this virtually uninhabited island. Experience the island's vast mangrove forests and its giant tortoise farm, along with the historic ruins of this former leper colony. After a barbecue lunch on the island, enjoy an array of water sports or simply relax and enjoy the island's beautiful beach and turquoise waters.

Day 3 - La Digue

A morning sail brings the vessel to La Digue, a sleepy island community where ox-carts and bicycles still remain the most common mode of transportation throughout the island. La Digue is home to the endemic Seychelles Paradise Flycatcher, and is perhaps most famous for its massive granite boulder formations at Anse Source d'Argent, which is thought to be the most photographed beach on earth. Explore the entire island by bicycle, perhaps stopping by Union Estate, a sprawling network of traditional island activities, including a copra mill, vanilla plantation, and shipyard

Day 4 - Praslin

Sail to Praslin, Seychelles' second-largest inhabited island, for disembarkation to the famous World Heritage Site, the Vallee de Mai Nature Reserve. This ancient forest is home to the curiously shaped double coconut, the coco de mer, as well as the Black Parrot, unique to Praslin. Explore the valley's eerie pathways beneath its canopy of massive palms, before returning onboard for afternoon opportunities to dive, snorkel or enjoy other water sports.

Day 5 - Cousin

Sail towards Cousin island off the coast of Praslin, for a morning visit of this strictly protected nature reserve, famed for its sea bird colonies and also as a sanctuary for Seychelles' rare endemic land birds and other native species. After lunch, the afternoon is yours to spend at leisure or to take advantage of snorkelling and diving opportunities off the isle of Praslin.

Day 6 - Anse Lazio

Sail to Anse Lazio, one of the most beautiful beaches in Praslin, and arguably, all of Seychelles - the perfect place for a day of swimming, snorkelling and other water sports, or supreme relaxation in one of the most stunning settings in the world. In the evening, enjoy a sunset sail back to Curieuse Bay to soak in the world's only granitic ocean islands one last evening.

Day 7 - Praslin



Disembarkation at Anse Possession, Praslin at 08.30hrs.

Please Note:

Your safety and comfort are our highest priority. In the event of adverse conditions, all itineraries are subject to change at the captain's discretion.

Be sure to bring plenty of sun-screen, a cap or hat and sunglasses - Seychelles is generally warm and sunny throughout the year and the sun's rays can be especially impactful onboard the vessel, due to the reflection from the sea.

Bring suitable footwear for walking on deck and on the beach, as well as in shallow water (some island visits require embarking & disembarking from dinghies in shallow water).

Wild Earth Travel

Small Ships, Big Adventures

wildearth-travel.com

info@wildearth-travel.com

YOUR SHIP: SEA PEARL

YOUR SHIP:	Sea Pearl
VESSEL TYPE:	Sail Ship Schooner
LENGTH:	35m
PASSENGER CAPACITY:	20
BUILT/REFURBISHED:	1915 / Recent Refurbishment

ACCOMMODATION

Air-conditioned Dining Salon

TV, DVD, stereo, ice-machine, washing machine, dryer

Upper Sun Deck and Bow Net for sun bathing

Covered Back Deck Lounge

Fully air-conditioned cabins with wash basin:

6 Double-bed cabins +1 bunk (Category A)

2 Triple cabins with 3 bunk beds (Category B)

4 Showers - 3 Toilets - 1 Deck Shower

CREW

1 Captain

1 Chef

1 Mechanic

2 Stewardesses

1 Dive instructor

2 Deckhands



2 Deckhands

Wild Earth Travel

Small Ships, Big Adventures

0800 945 3327 (within New Zealand) | +64 (0) 3 365 1355 | **1800 107 715** (within Australia)

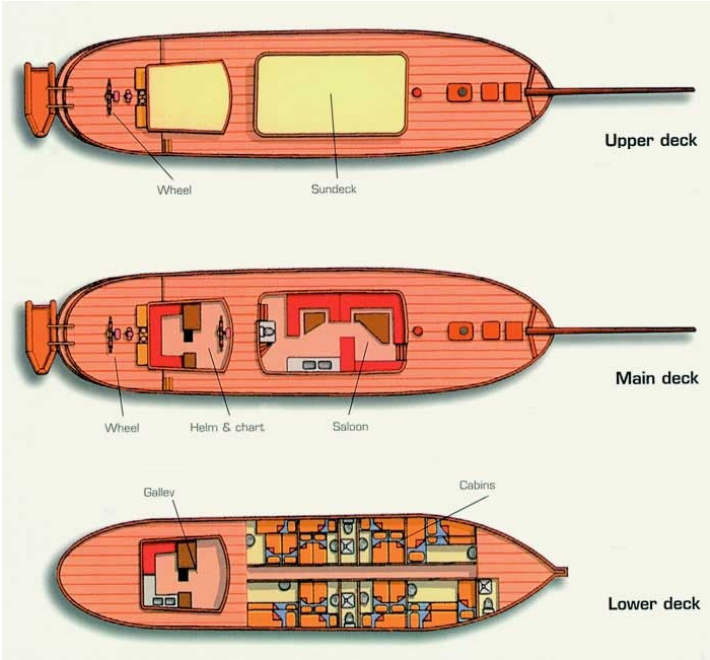
info@wildearth-travel.com | **wildearth-travel.com**



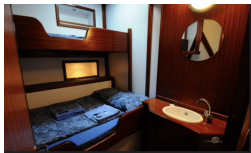
wildearth-travel.com

info@wildearth-travel.com

INSIDE YOUR SHIP



Category A Double



Category A Single



Category A Sole occupancy



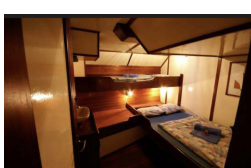
Category A Triple



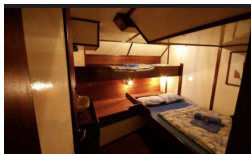
Category B Single



Category B Twin



Category B sole occupancy





PRICING

12-Jul-2025 to 18-Jul-2025

Category B Twin	1650 EUR pp
Category A Triple	1755 EUR pp
Category A Double	1912 EUR pp
Category B sole occupancy	2147 EUR pp
Category A Sole occupancy	2864 EUR pp

09-Aug-2025 to 15-Aug-2025

Category B Twin	1650 EUR pp
Category A Triple	1755 EUR pp
Category A Double	1912 EUR pp
Category B sole occupancy	2147 EUR pp
Category A Sole occupancy	2864 EUR pp

19-Jul-2025 to 25-Jul-2025

Category B Twin	1650 EUR pp
Category A Triple	1755 EUR pp
Category A Double	1912 EUR pp
Category B sole occupancy	2147 EUR pp
Category A Sole occupancy	2864 EUR pp

16-Aug-2025 to 22-Aug-2025

Category B Twin	1650 EUR pp
Category A Triple	1755 EUR pp
Category A Double	1912 EUR pp
Category B sole occupancy	2147 EUR pp
Category A Sole occupancy	2864 EUR pp

26-Jul-2025 to 01-Aug-2025

Category B Twin	1650 EUR pp
Category A Triple	1755 EUR pp
Category A Double	1912 EUR pp
Category B sole occupancy	2147 EUR pp
Category A Sole occupancy	2864 EUR pp

23-Aug-2025 to 29-Aug-2025

Category B Twin	1650 EUR pp
Category A Triple	1755 EUR pp
Category A Double	1912 EUR pp
Category B sole occupancy	2147 EUR pp
Category A Sole occupancy	2864 EUR pp

02-Aug-2025 to 08-Aug-2025

Category B Twin	1650 EUR pp
Category A Triple	1755 EUR pp
Category A Double	1912 EUR pp
Category B sole occupancy	2147 EUR pp
Category A Sole occupancy	2864 EUR pp



PRICING

30-Aug-2025 to 05-Sep-2025

Category B Twin	1650 EUR pp
Category A Triple	1755 EUR pp
Category A Double	1912 EUR pp
Category B sole occupancy	2147 EUR pp
Category A Sole occupancy	2864 EUR pp

06-Sep-2025 to 12-Sep-2025

Category B Twin	1650 EUR pp
Category A Triple	1755 EUR pp
Category A Double	1912 EUR pp
Category B sole occupancy	2147 EUR pp
Category A Sole occupancy	2864 EUR pp

13-Sep-2025 to 19-Sep-2025

Category B Twin	1650 EUR pp
Category A Triple	1755 EUR pp
Category A Double	1912 EUR pp
Category B sole occupancy	2147 EUR pp
Category A Sole occupancy	2864 EUR pp

20-Sep-2025 to 26-Sep-2025

Category B Twin	1650 EUR pp
Category A Triple	1755 EUR pp
Category A Double	1912 EUR pp
Category B sole occupancy	2147 EUR pp
Category A Sole occupancy	2864 EUR pp

27-Sep-2025 to 03-Oct-2025

Category B Twin	1650 EUR pp
Category A Triple	1755 EUR pp
Category A Double	1912 EUR pp
Category B sole occupancy	2147 EUR pp
Category A Sole occupancy	2864 EUR pp

04-Oct-2025 to 10-Oct-2025

Category B Twin	1650 EUR pp
Category A Triple	1755 EUR pp
Category A Double	1912 EUR pp
Category B sole occupancy	2147 EUR pp
Category A Sole occupancy	2864 EUR pp

11-Oct-2025 to 17-Oct-2025

Category B Twin	1650 EUR pp
Category A Triple	1755 EUR pp
Category A Double	1912 EUR pp
Category B sole occupancy	2147 EUR pp
Category A Sole occupancy	2864 EUR pp



PRICING

18-Oct-2025 to 24-Oct-2025

Category B Twin	1650 EUR pp
Category A Triple	1755 EUR pp
Category A Double	1912 EUR pp
Category B sole occupancy	2147 EUR pp
Category A Sole occupancy	2864 EUR pp

16-May-2026 to 22-May-2026

Category B Twin	1717 EUR pp
Category A Triple	1825 EUR pp
Category A Double	1988 EUR pp
Category B sole occupancy	2233 EUR pp
Category A Sole occupancy	2979 EUR pp

25-Oct-2025 to 31-Oct-2025

Category B Twin	1650 EUR pp
Category A Triple	1755 EUR pp
Category A Double	1912 EUR pp
Category B sole occupancy	2147 EUR pp
Category A Sole occupancy	2864 EUR pp

23-May-2026 to 29-May-2026

Category B Twin	1717 EUR pp
Category A Triple	1825 EUR pp
Category A Double	1988 EUR pp
Category B sole occupancy	2233 EUR pp
Category A Sole occupancy	2979 EUR pp

02-May-2026 to 08-May-2026

Category B Twin	1717 EUR pp
Category A Triple	1825 EUR pp
Category A Double	1988 EUR pp
Category B sole occupancy	2233 EUR pp
Category A Sole occupancy	2979 EUR pp

30-May-2026 to 05-Jun-2026

Category B Twin	1218 EUR pp
Category A Triple	1298 EUR pp
Category A Double	1412 EUR pp
Category B Single	1587 EUR pp
Category A Single	2120 EUR pp

09-May-2026 to 15-May-2026

Category B Twin	1717 EUR pp
Category A Triple	1825 EUR pp
Category A Double	1988 EUR pp
Category B sole occupancy	2233 EUR pp
Category A Sole occupancy	2979 EUR pp



PRICING

06-Jun-2026 to 12-Jun-2026

Category B Twin	1218 EUR pp
Category A Triple	1298 EUR pp
Category A Double	1412 EUR pp
Category B Single	1587 EUR pp
Category A Single	2120 EUR pp

04-Jul-2026 to 10-Jul-2026

Category B Twin	1717 EUR pp
Category A Triple	1825 EUR pp
Category A Double	1988 EUR pp
Category B Single	2233 EUR pp
Category A Single	2979 EUR pp

13-Jun-2026 to 19-Jun-2026

Category B Twin	1218 EUR pp
Category A Triple	1298 EUR pp
Category A Double	1412 EUR pp
Category B Single	1587 EUR pp
Category A Single	2120 EUR pp

11-Jul-2026 to 17-Jul-2026

Category B Twin	1717 EUR pp
Category A Triple	1825 EUR pp
Category A Double	1988 EUR pp
Category B Single	2233 EUR pp
Category A Single	2979 EUR pp

20-Jun-2026 to 26-Jun-2026

Category B Twin	1218 EUR pp
Category A Triple	1298 EUR pp
Category A Double	1412 EUR pp
Category B Single	1587 EUR pp
Category A Single	2120 EUR pp

18-Jul-2026 to 24-Jul-2026

Category B Twin	1717 EUR pp
Category A Triple	1825 EUR pp
Category A Double	1988 EUR pp
Category B Single	2233 EUR pp
Category A Single	2979 EUR pp

27-Jun-2026 to 03-Jul-2026

Category B Twin	1218 EUR pp
Category A Triple	1298 EUR pp
Category A Double	1412 EUR pp
Category B Single	1587 EUR pp
Category A Single	2120 EUR pp



PRICING

25-Jul-2026 to 31-Jul-2026

Category B Twin	1717 EUR pp
Category A Triple	1825 EUR pp
Category A Double	1988 EUR pp
Category B Single	2233 EUR pp
Category A Single	2979 EUR pp

22-Aug-2026 to 28-Aug-2026

Category B Twin	1717 EUR pp
Category A Triple	1825 EUR pp
Category A Double	1988 EUR pp
Category B Single	2233 EUR pp
Category A Single	2979 EUR pp

01-Aug-2026 to 07-Aug-2026

Category B Twin	1717 EUR pp
Category A Triple	1825 EUR pp
Category A Double	1988 EUR pp
Category B Single	2233 EUR pp
Category A Single	2979 EUR pp

29-Aug-2026 to 04-Sep-2026

Category B Twin	1717 EUR pp
Category A Triple	1825 EUR pp
Category A Double	1988 EUR pp
Category B Single	2233 EUR pp
Category A Single	2979 EUR pp

08-Aug-2026 to 14-Aug-2026

Category B Twin	1717 EUR pp
Category A Triple	1825 EUR pp
Category A Double	1988 EUR pp
Category B Single	2233 EUR pp
Category A Single	2979 EUR pp

05-Sep-2026 to 11-Sep-2026

Category B Twin	1717 EUR pp
Category A Triple	1825 EUR pp
Category A Double	1988 EUR pp
Category B Single	2233 EUR pp
Category A Single	2979 EUR pp

15-Aug-2026 to 21-Aug-2026

Category B Twin	1717 EUR pp
Category A Triple	1825 EUR pp
Category A Double	1988 EUR pp
Category B Single	2233 EUR pp
Category A Single	2979 EUR pp



PRICING

12-Sep-2026 to 18-Sep-2026

Category B Twin	1717 EUR pp
Category A Triple	1825 EUR pp
Category A Double	1988 EUR pp
Category B Single	2233 EUR pp
Category A Single	2979 EUR pp

10-Oct-2026 to 16-Oct-2026

Category B Twin	1717 EUR pp
Category A Triple	1825 EUR pp
Category A Double	1988 EUR pp
Category B Single	2233 EUR pp
Category A Single	2979 EUR pp

19-Sep-2026 to 25-Sep-2026

Category B Twin	1717 EUR pp
Category A Triple	1825 EUR pp
Category A Double	1988 EUR pp
Category B Single	2233 EUR pp
Category A Single	2979 EUR pp

17-Oct-2026 to 23-Oct-2026

Category B Twin	1717 EUR pp
Category A Triple	1825 EUR pp
Category A Double	1988 EUR pp
Category B Single	2233 EUR pp
Category A Single	2979 EUR pp

26-Sep-2026 to 02-Oct-2026

Category B Twin	1717 EUR pp
Category A Triple	1825 EUR pp
Category A Double	1988 EUR pp
Category B Single	2233 EUR pp
Category A Single	2979 EUR pp

24-Oct-2026 to 30-Oct-2026

Category B Twin	1717 EUR pp
Category A Triple	1825 EUR pp
Category A Double	1988 EUR pp
Category B Single	2233 EUR pp
Category A Single	2979 EUR pp

03-Oct-2026 to 09-Oct-2026

Category B Twin	1717 EUR pp
Category A Triple	1825 EUR pp
Category A Double	1988 EUR pp
Category B Single	2233 EUR pp
Category A Single	2979 EUR pp



PRICING

31-Oct-2026 to 06-Nov-2026

Category B Twin	1717 EUR pp
Category A Triple	1825 EUR pp
Category A Double	1988 EUR pp
Category B Single	2233 EUR pp
Category A Single	2979 EUR pp

ADDITIONAL CHARGES: Conservation Fee 165 EUR pp

Optional extras & upgrades

Diving - available at extra charge onboard. From 40 EUR

There are numerous opportunities to dive on most days of the itinerary, and we can also conduct introductory dives for novices and PADI Open Water certification courses. Contact us for dive rates and equipment rental fees. Each Day's First Dive: Euro 40 / Subsequent Dives: Euro 20 e.g. for 2 dives in a day the charge would be Euro 60 per day. Full diving equipment rental - Euro 10 per piece or Euro 30 for full set (per day). Introductory dive (1 to 1 with instructor) - Euro 70 per dive. 8 dive package - Euro 158 not including equipment hire. All extras onboard are excluding 15% Seychelles Government Tax/VAT except for conservation fee

PADI Open Water Courses

Please contact us for more details.