



Wild Earth Travel

Small Ships, Big Adventures

wildearth-travel.com

info@wildearth-travel.com

THE SEYCHELLES SAILING CRUISE (NOVEMBER TO APRIL)

Isolated in the Indian Ocean and the only mid-ocean islands of granite formation to be found on earth, the Seychelles archipelago is often mentioned in the same breath as the lost 'Garden of Eden.' The highest peaks of a submerged mountain range that broke apart from the supercontinent of Gondwana millions of years ago, the Seychelles' inner islands are the most ancient islands on earth - no other mid-ocean isles of granite formation can be found anywhere else.

This curious geological feature was one of several curiosities about the islands that led the famed British General, Charles Gordon, to declare Seychelles the site of the biblical Garden of Eden. Situated some 1,500 kilometers east of mainland Africa, and northeast of the island of Madagascar, this tiny island group boasts a population of just 90,000 inhabitants, with a warm, tropical climate all year-round and some of the most stunningly beautiful beaches in the world.

Mahe, the largest island, is home to the majority of the population and represents the archipelago's commercial and transportation hub, with the country's only international airport linking the islands to the rest of the globe. The island is characterised by its towering granite peaks, lush mist forests and dozens of striking coves and beaches. The second largest island, Praslin, is home to the legendary Vallee de Mai, the UNESCO World Heritage Site where the Coco de Mer grows in abundance. This double coconut, which curiously resembles the shape of a woman's pelvis, was another facet of General Gordon's theory about Seychelles as the Garden of Eden - he

believed it to be the real forbidden fruit. La Digue, the third-most populous island, moves at an even slower pace: bicycles remain the most common mode of transportation, for both its residents and visiting tourists.

The huge granite boulders that adorn the coastline at Anse Source D'Argent have led some to believe that it could very well be the most photographed beach in the world. While Mahe, Praslin and La Digue may be the principal islands, dozens of smaller 'satellite' isles nearby offer further opportunity to explore and admire.

Every island has a character and charm all of its own, with colorful individual histories and unique natural features, some with steep granite cliffs and others comprising pristine coral atolls. Together, they make up a surprisingly diverse destination of great natural beauty, rare flora and fauna that have been cocooned in isolation for millions of years, and a friendly multi-cultural people eager to welcome you to their shores.

Wild Earth Travel
Small Ships, Big Adventures

0800 945 3327 (within New Zealand) | +64 (0) 3 365 1355 | **1800 107 715** (within Australia)

info@wildearth-travel.com | **wildearth-travel.com**



eir shores.

ITINERARY

Day 1 - Mahe, embarkation

Embarkation at the Inter-Island Quay at 1030hrs, followed by the Captain's welcome briefing. Depart Port Victoria at 1200hrs, sailing from Mahe to a late afternoon anchorage at Round Island, just off the isle of Praslin. In the evening, introduce yourself to Creole cuisine with a welcome barbecue dinner onboard.

Day 2 - Praslin

Sail to Praslin, Seychelles' second-largest inhabited island, for disembarkation to the famous World Heritage Site, the Vallee de Mai Nature Reserve. This ancient forest is home to the curiously shaped double coconut, the coco de mer, as well as the Black Parrot, unique to Praslin. Explore the valley's eerie pathways beneath its canopy of massive palms, before returning onboard for

afternoon opportunities to dive, snorkel or enjoy other water sports.

Day 3 - La Digue

A morning sail brings the vessel to La Digue, a sleepy island community where ox-carts and bicycles still remain the most common mode of transportation throughout the island. La Digue is home to the endemic Seychelles Paradise Flycatcher, and is perhaps most famous for its massive granite boulder formations at Anse Source d'Argent, which is thought to be the most photographed beach on earth. Explore the entire island by bicycle, perhaps stopping by Union Estate, a sprawling network of traditional island activities, including a copra mill, vanilla plantation, and shipyard.

Day 4 - Grande Soeur and Petite Soeur

In the morning the vessel sails toward Grande Soeur and Petite Soeur (the Sisters) for excellent snorkelling and diving, and for a relaxing visit of these unique and completely uninhabited tropical islands. In the afternoon, visit Coco Island, one of Seychelles' tiny granite jewels, a fantastic spot for snorkelling within a kaleidoscope of tropical fish.

Day 5 - Booby Island and Aride Island

Sail to Booby Island for a morning of diving and water sports. After lunch, sail to Aride Island, a globally important nature reserve with more native bird species than any other island, including five endemics and the world's largest population of 3 species (Lesser Noddy, Audubon's Shearwater and Seychelles Warbler). The nature trail leads to a spectacular cliff-top view with the largest frigatebird roost outside of Aldabra. Aride is the only natural location in the world for Wright's Gardenia and 400 species of fish have been recorded around the island.

Day 6 - Curieuse

In the morning disembark at Curieuse for a visit of this virtually uninhabited island. Experience the island's vast mangrove forests and its giant tortoise farm, along with the historic ruins of this former leper colony. After a barbecue lunch on the island, enjoy an array of water sports or simply relax and enjoy



Wild Earth Travel
Small Ships, Big Adventures

wildearth-travel.com

info@wildearth-travel.com

the island's beautiful beach and turquoise waters.

Day 7 - Ile Seche

After breakfast, enjoy a leisurely sail back towards Mahe, with a last stop at Ile Seche for more snorkelling or diving, followed by a farewell barbecue. The vessel then sails into Port Victoria for an overnight stay.

Day 8 - Disembarkation

Disembarkation at the Inter-Island Quay at 08.30hrs.

Please Note:

Your safety and comfort are our highest priority. In the event of adverse conditions, all itineraries are subject to change at the captain's discretion.

Be sure to bring plenty of sun-screen, a cap or hat and sunglasses - Seychelles is generally warm and sunny throughout the year and the sun's rays can be especially impactful onboard the vessel, due to the reflection from the sea.

Bring suitable footwear for walking on deck and on the beach, as well as in shallow water (some island visits require embarking & disembarking from dinghies in shallow water).

Wild Earth Travel
Small Ships, Big Adventures

0800 945 3327 (within New Zealand) | +64 (0) 3 365 1355 | **1800 107 715** (within Australia)

info@wildearth-travel.com | **wildearth-travel.com**

Wild Earth Travel

Small Ships, Big Adventures

wildearth-travel.com

info@wildearth-travel.com

YOUR SHIP: SEA PEARL

YOUR SHIP:	Sea Pearl
VESSEL TYPE:	Sail Ship Schooner
LENGTH:	35m
PASSENGER CAPACITY:	20
BUILT/REFURBISHED:	1915 / Recent Refurbishment

ACCOMMODATION

Air-conditioned Dining Salon

TV, DVD, stereo, ice-machine, washing machine, dryer

Upper Sun Deck and Bow Net for sun bathing

Covered Back Deck Lounge

Fully air-conditioned cabins with wash basin:

6 Double-bed cabins +1 bunk (Category A)

2 Triple cabins with 3 bunk beds (Category B)

4 Showers - 3 Toilets - 1 Deck Shower

CREW

1 Captain

1 Chef

1 Mechanic

2 Stewardesses

1 Dive instructor

2 Deckhands



2 Deckhands

Wild Earth Travel

Small Ships, Big Adventures

0800 945 3327 (within New Zealand) | +64 (0) 3 365 1355 | **1800 107 715** (within Australia)

info@wildearth-travel.com | wildearth-travel.com

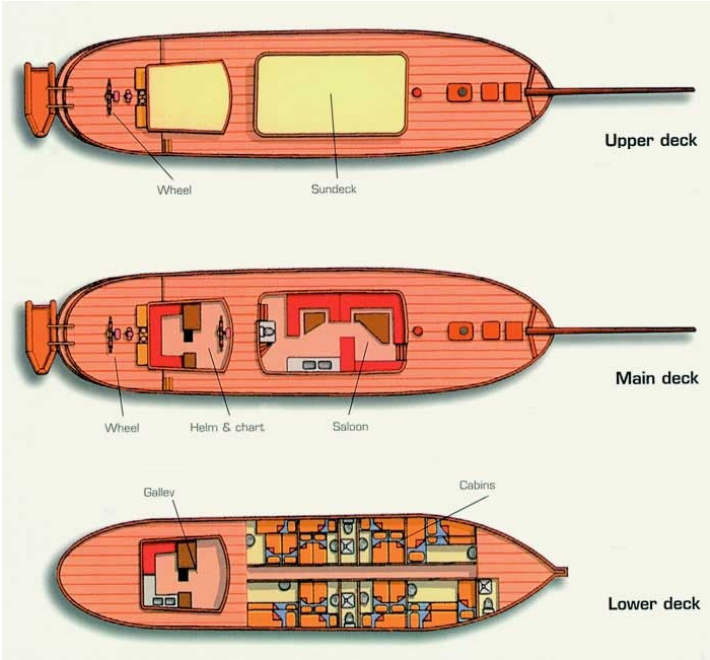


Wild Earth Travel
Small Ships, Big Adventures

wildearth-travel.com

info@wildearth-travel.com

INSIDE YOUR SHIP



Category A Double



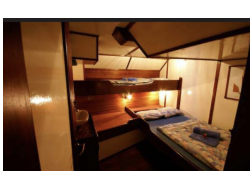
Category A Single



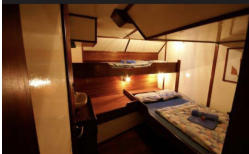
Category A Triple



Category B Single



Category B Twin





PRICING

01-Nov-2025 to 08-Nov-2025

Category B Twin	1987 EUR pp
Category A Triple	2133 EUR pp
Category A Double	2303 EUR pp
Category B Single	2581 EUR pp
Category A Single	3451 EUR pp

29-Nov-2025 to 06-Dec-2025

Category B Twin	1987 EUR pp
Category A Triple	2133 EUR pp
Category A Double	2303 EUR pp
Category B Single	2581 EUR pp
Category A Single	3451 EUR pp

08-Nov-2025 to 15-Nov-2025

Category B Twin	1987 EUR pp
Category A Triple	2133 EUR pp
Category A Double	2303 EUR pp
Category B Single	2581 EUR pp
Category A Single	3451 EUR pp

06-Dec-2025 to 13-Dec-2025

Category B Twin	1987 EUR pp
Category A Triple	2133 EUR pp
Category A Double	2303 EUR pp
Category B Single	2581 EUR pp
Category A Single	3451 EUR pp

15-Nov-2025 to 22-Nov-2025

Category B Twin	1987 EUR pp
Category A Triple	2133 EUR pp
Category A Double	2303 EUR pp
Category B Single	2581 EUR pp
Category A Single	3451 EUR pp

13-Dec-2025 to 20-Dec-2025

Category B Twin	1987 EUR pp
Category A Triple	2133 EUR pp
Category A Double	2303 EUR pp
Category B Single	2581 EUR pp
Category A Single	3451 EUR pp

22-Nov-2025 to 29-Nov-2025

Category B Twin	1987 EUR pp
Category A Triple	2133 EUR pp
Category A Double	2303 EUR pp
Category B Single	2581 EUR pp
Category A Single	3451 EUR pp



PRICING

20-Dec-2025 to 27-Dec-2025

Category B Twin	1987 EUR pp
Category A Triple	2133 EUR pp
Category A Double	2303 EUR pp
Category B Single	2581 EUR pp
Category A Single	3451 EUR pp

17-Jan-2026 to 24-Jan-2026

Category B Twin	1411 EUR pp
Category A Triple	1515 EUR pp
Category A Double	1636 EUR pp
Category B Single	1835 EUR pp
Category A Single	2456 EUR pp

27-Dec-2025 to 03-Jan-2026

Category B Twin	1987 EUR pp
Category A Triple	2133 EUR pp
Category A Double	2303 EUR pp
Category B Single	2581 EUR pp
Category A Single	3451 EUR pp

24-Jan-2026 to 31-Jan-2026

Category B Twin	1411 EUR pp
Category A Triple	1515 EUR pp
Category A Double	1636 EUR pp
Category B Single	1835 EUR pp
Category A Single	2456 EUR pp

03-Jan-2026 to 10-Jan-2026

Category B Twin	1411 EUR pp
Category A Triple	1515 EUR pp
Category A Double	1636 EUR pp
Category B Single	1835 EUR pp
Category A Single	2456 EUR pp

31-Jan-2026 to 07-Feb-2026

Category B Twin	1987 EUR pp
Category A Triple	2133 EUR pp
Category A Double	2303 EUR pp
Category B Single	2581 EUR pp
Category A Single	3451 EUR pp

10-Jan-2026 to 17-Jan-2026

Category B Twin	1411 EUR pp
Category A Triple	1515 EUR pp
Category A Double	1636 EUR pp
Category B Single	1835 EUR pp
Category A Single	2456 EUR pp



PRICING

07-Feb-2026 to 14-Feb-2026

Category B Twin	1987 EUR pp
Category A Triple	2133 EUR pp
Category A Double	2303 EUR pp
Category B Single	2581 EUR pp
Category A Single	3451 EUR pp

07-Mar-2026 to 14-Mar-2026

Category B Twin	1987 EUR pp
Category A Triple	2133 EUR pp
Category A Double	2303 EUR pp
Category B Single	2581 EUR pp
Category A Single	3451 EUR pp

14-Feb-2026 to 21-Feb-2026

Category B Twin	1987 EUR pp
Category A Triple	2133 EUR pp
Category A Double	2303 EUR pp
Category B Single	2581 EUR pp
Category A Single	3451 EUR pp

14-Mar-2026 to 21-Mar-2026

Category B Twin	1987 EUR pp
Category A Triple	2133 EUR pp
Category A Double	2303 EUR pp
Category B Single	2581 EUR pp
Category A Single	3451 EUR pp

21-Feb-2026 to 28-Feb-2026

Category B Twin	1987 EUR pp
Category A Triple	2133 EUR pp
Category A Double	2303 EUR pp
Category B Single	2581 EUR pp
Category A Single	3451 EUR pp

21-Mar-2026 to 28-Mar-2026

Category B Twin	1987 EUR pp
Category A Triple	2133 EUR pp
Category A Double	2303 EUR pp
Category B Single	2581 EUR pp
Category A Single	3451 EUR pp

28-Feb-2026 to 07-Mar-2026

Category B Twin	1987 EUR pp
Category A Triple	2133 EUR pp
Category A Double	2303 EUR pp
Category B Single	2581 EUR pp
Category A Single	3451 EUR pp



PRICING

28-Mar-2026 to 04-Apr-2026

Category B Twin	1987 EUR pp
Category A Triple	2133 EUR pp
Category A Double	2303 EUR pp
Category B Single	2581 EUR pp
Category A Single	3451 EUR pp

04-Apr-2026 to 11-Apr-2026

Category B Twin	1987 EUR pp
Category A Triple	2133 EUR pp
Category A Double	2303 EUR pp
Category B Single	2581 EUR pp
Category A Single	3451 EUR pp

11-Apr-2026 to 18-Apr-2026

Category B Twin	1987 EUR pp
Category A Triple	2133 EUR pp
Category A Double	2303 EUR pp
Category B Single	2581 EUR pp
Category A Single	3451 EUR pp

18-Apr-2026 to 25-Apr-2026

Category B Twin	1987 EUR pp
Category A Triple	2133 EUR pp
Category A Double	2303 EUR pp
Category B Single	2581 EUR pp
Category A Single	3451 EUR pp

25-Apr-2026 to 02-May-2026

Category B Twin	1987 EUR pp
Category A Triple	2133 EUR pp
Category A Double	2303 EUR pp
Category B Single	2581 EUR pp
Category A Single	3451 EUR pp

ADDITIONAL CHARGES:

Conservation Fee 200 EUR pp

Optional extras & upgrades

Diving - available at extra charge onboard. From 40 EUR

There are numerous opportunities to dive on most days of the itinerary, and we can also conduct introductory dives for novices and PADI Open Water certification courses. Contact us for dive rates and equipment rental fees. Each Day's First Dive: Euro 40 / Subsequent Dives: Euro 20 e.g. for 2 dives in a day the charge would be Euro 60 per day. Full diving equipment rental - Euro 10 per piece or Euro 30 for full set (per day). Introductory dive (1 to 1 with instructor) - Euro 70 per dive. 8 dive package - Euro 158 not including equipment hire. All extras onboard are excluding 15% Seychelles Government Tax/VAT except for conservation fee

PADI Open Water Courses

Please contact us for more details.