



wildearth-travel.com

info@wildearth-travel.com

THE SEYCHELLES PREMIUM SAILING CRUISE (MAY TO OCTOBER)

Isolated in the Indian Ocean and the only mid-ocean islands of granite formation to be found on earth, the Seychelles archipelago is often mentioned in the same breath as the lost 'Garden of Eden.' The highest peaks of a submerged mountain range that broke apart from the supercontinent of Gondwana millions of years ago, the Seychelles' inner islands are the most ancient islands on earth - no other mid-ocean isles of granite formation can be found anywhere else.

This curious geological feature was one of several curiosities about the islands that led the famed British General, Charles Gordon, to declare Seychelles the site of the biblical Garden of Eden. Situated some 1,500 kilometers east of mainland Africa, and northeast of the island of Madagascar, this tiny island group boasts a population of just 90,000 inhabitants, with a warm, tropical climate all year-round and some of the most stunningly beautiful beaches in the world. Mahe, the largest island, is home to the majority of the population and represents the archipelago's commercial and transportation hub, with the country's only international airport linking the islands to the rest of the globe. The island is characterised by its towering granite peaks, lush mist forests and dozens of striking coves and beaches.

The second largest island, Praslin, is home to the legendary Vallee de Mai, the UNESCO World Heritage Site where the Coco de Mer grows in abundance. This double coconut, which curiously resembles the shape of a woman's pelvis, was another facet of General Gordon's theory about Seychelles as the

Garden of Eden - he believed it to be the real forbidden fruit. La Digue, the third-most populous island, moves at an even slower pace: bicycles remain the most common mode of transportation, for both its residents and visiting tourists.

The huge granite boulders that adorn the coastline at Anse Source D'Argent have led some to believe that it could very well be the most photographed beach in the world. While Mahe, Praslin and La Digue may be the principal islands, dozens of smaller 'satellite' isles nearby offer further opportunity to explore and admire.

Every island has a character and charm all of its own, with colorful individual histories and unique natural features, some with steep granite cliffs and others comprising pristine coral atolls. Together, they make up a surprisingly diverse destination of great natural beauty, rare flora and fauna that have been cocooned in isolation for millions of years, and a friendly multi-cultural people eager to welcome you to their shores.

Your safety and comfort are our highest priority. In the event of adverse conditions, all itineraries are subject to change at the captain's discretion. - Be sure to bring plenty of coral reef safe sun-screen, a cap or hat and sunglasses - Seychelles is generally warm and sunny throughout the year and the sun's rays can be especially impactful onboard the vessel, due to the reflection from the sea. - Bring suitable footwear for walking on deck and on the beach, as well as in shallow water (some island visits require embarking & disembarking from dinghies in



shallow water).

There are numerous opportunities to dive on most days of the itinerary, and we can also conduct introductory dives for novices and PADI Open Water certification courses. Contact us for dive rates and equipment rental fees. - This cruise is full board - we serve a combination of International and authentic Creole cuisine.

Please contact us for special dietary needs. - Bottled water, soft drinks, beer, wine and spirits are all available on board. Price list available on request.



on request.

ITINERARY

Day 1 - Mahe - Embarkation

Embarkation at the Inter-Island Quay at 1030hrs for official welcome and briefing by the captain. Depart from Port Victoria at 1200hrs, sailing up and around the scenic coastline of Mahe's northern peninsula, past the beautiful bay of Beau Vallon, and along the dramatic backdrop of the northwestern coast of the island, with its opposing granite boulders, lush vegetation and striking blue water. In the evening, introduce yourself to Creole cuisine with a welcome barbecue onboard the vessel.

Day 2 - Baie Ternay Marine Park and Nature Reserve

Sail to the beautiful Baie Ternay Marine Park and Nature Reserve on the western coast of Mahe, where calm, crystalclear waters provide for excellent snorkelling and diving during the day. An afternoon sail back to Beau Vallon Bay positions the vessel in one of the island's best places to watch the countless shades of pink and orange of a Seychelles sunset.

Day 3 - Cousin

Early morning sail towards Cousin island off the coast of Praslin, for morning visit of this strictly protected nature reserve, famed for its sea bird colonies and also as a sanctuary for Seychelles' rare endemic land birds and other native species. After lunch we sail to Praslin, for an afternoon of diving and water-sports.

Day 4 - Praslin

Disembarkation on Praslin, Seychelles' second-largest inhabited island, for the visit of the famous World Heritage Site, the Vallee de Mai Nature Reserve. This ancient forest is home to the curiously shaped double coconut, the coco de mer, as well as the Black Parrot, unique to Praslin. Explore the valley's eerie pathways beneath its canopy of massive palms, before returning onboard for afternoon opportunities to dive, snorkel or enjoy other water sports.

Day 5 - La Digue

Wild Earth Travel

Small Ships, Big Adventures

0800 945 3327 (within New Zealand) | +64 (0) 3 365 1355 | 1800 107 715 (within Australia)

info@wildearth-travel.com | wildearth-travel.com



Wild Earth Travel

Small Ships, Big Adventures

wildearth-travel.com

info@wildearth-travel.com

A morning sail brings the vessel to La Digue, a sleepy island community where ox-carts and bicycles still remain the most common mode of transportation throughout the island. La Digue is home to the endemic Seychelles Paradise Flycatcher, and is perhaps most famous for its massive granite boulder formations at Anse Source d'Argent, which is thought to be the most photographed beach on earth. Explore the entire island by bicycle, perhaps stopping by Union Estate, a sprawling network of traditional island activities, including a copra mill, vanilla plantation, and shipyard.

Day 6 - Curieuse, St. Pierre & Praslin

In the morning disembark at Curieuse for a visit of this virtually uninhabited island. Experience the island's vast mangrove forests and its giant tortoise farm, along with the historic ruins of this former leper colony. After a barbecue lunch on the island, enjoy an array of water sports or simply relax and enjoy the island's beautiful beach and turquoise waters. In the afternoon, sail towards the tiny, picturesque granite outcrop of St. Pierre. It is an excellent site for snorkelling and diving, with the nooks and crannies of its granite boulders teeming with marine life. Sail to Anse Lazio, one of the most beautiful beaches of Praslin, and arguably, all of Seychelles - a perfect place for water-sports.

Day 7 - Ile Seche

After breakfast the vessel begins its sail towards Mahe, anchoring in the Ste Anne Marine National Park with its cluster of lush granite islands for an afternoon of water-sports and diving. Overnight at Ile Seche.

Day 8 - Mahe - Disembarkation

Disembarkation at the Inter-Island Quay at 08.30hrs.

Please Note:

Itineraries are subject to change.

Wild Earth Travel

Small Ships, Big Adventures

0800 945 3327 (within New Zealand) | +64 (0) 3 365 1355 | **1800 107 715** (within Australia)

info@wildearth-travel.com | **wildearth-travel.com**

Wild Earth Travel

Small Ships, Big Adventures

wildearth-travel.com

info@wildearth-travel.com

YOUR SHIP: SEA STAR & SEA BIRD

| | |
|----------------------------|------------------------------------|
| YOUR SHIP: | Sea Star & Sea Bird |
| VESSEL TYPE: | Motorised Schooner |
| LENGTH: | 40m Sea Star / 42m Sea Bird |
| PASSENGER CAPACITY: | 22 |
| BUILT/REFURBISHED: | 2002 / 2000 |



The SY Sea Star is a 40-metre custom-built yacht with three masts and five Bermuda sails, with classic wood finishings across its 9 spacious guest cabins and common areas.

The SY Sea Bird was redesigned in 2007 to begin cruising in Seychelles, is a two-masted 42-metre yacht with four Bermuda sails, sleek contours and modern interiors across its 9 en-suite guest cabins and common areas.

Wild Earth Travel

Small Ships, Big Adventures

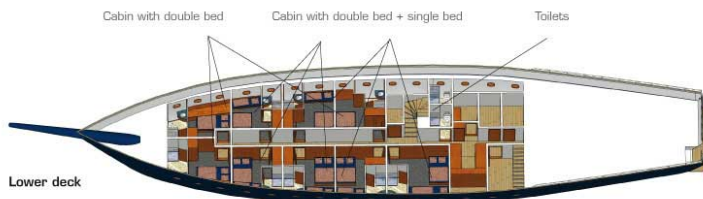
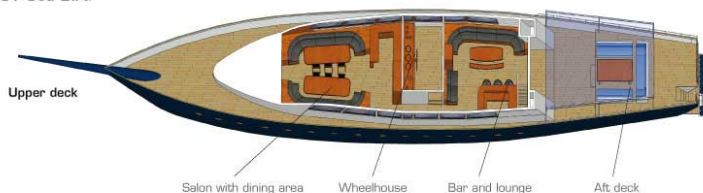
0800 945 3327 (within New Zealand) | +64 (0) 3 365 1355 | **1800 107 715** (within Australia)

info@wildearth-travel.com | **wildearth-travel.com**

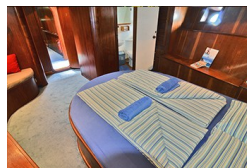


INSIDE YOUR SHIP

SY Sea Bird



Double Cabin



Single Occupancy Double Bed



Triple Cabin





PRICING

30-Aug-2025 to 06-Sep-2025

| | |
|-----------------------------|-------------|
| Triple Cabin | 2595 EUR pp |
| Double Cabin | 2815 EUR pp |
| Single Occupancy Double Bed | 4223 EUR pp |

06-Sep-2025 to 13-Sep-2025

| | |
|-----------------------------|-------------|
| Triple Cabin | 2595 EUR pp |
| Double Cabin | 2815 EUR pp |
| Single Occupancy Double Bed | 4223 EUR pp |

13-Sep-2025 to 20-Sep-2025

| | |
|-----------------------------|-------------|
| Triple Cabin | 2595 EUR pp |
| Double Cabin | 2815 EUR pp |
| Single Occupancy Double Bed | 4223 EUR pp |

20-Sep-2025 to 27-Sep-2025

| | |
|-----------------------------|-------------|
| Triple Cabin | 2595 EUR pp |
| Double Cabin | 2815 EUR pp |
| Single Occupancy Double Bed | 4223 EUR pp |

27-Sep-2025 to 04-Oct-2025

| | |
|-----------------------------|-------------|
| Triple Cabin | 2595 EUR pp |
| Double Cabin | 2815 EUR pp |
| Single Occupancy Double Bed | 4223 EUR pp |

04-Oct-2025 to 11-Oct-2025

| | |
|-----------------------------|-------------|
| Triple Cabin | 2595 EUR pp |
| Double Cabin | 2815 EUR pp |
| Single Occupancy Double Bed | 4223 EUR pp |

11-Oct-2025 to 18-Oct-2025

| | |
|-----------------------------|-------------|
| Triple Cabin | 2595 EUR pp |
| Double Cabin | 2815 EUR pp |
| Single Occupancy Double Bed | 4223 EUR pp |

18-Oct-2025 to 25-Oct-2025

| | |
|-----------------------------|-------------|
| Triple Cabin | 2595 EUR pp |
| Double Cabin | 2815 EUR pp |
| Single Occupancy Double Bed | 4223 EUR pp |

25-Oct-2025 to 01-Nov-2025

| | |
|-----------------------------|-------------|
| Triple Cabin | 2595 EUR pp |
| Double Cabin | 2815 EUR pp |
| Single Occupancy Double Bed | 4223 EUR pp |

25-Oct-2025 to 01-Nov-2025

| | |
|-----------------------------|-------------|
| Triple Cabin | 2595 EUR pp |
| Double Cabin | 2815 EUR pp |
| Single Occupancy Double Bed | 4223 EUR pp |

02-May-2026 to 09-May-2026

| | |
|-----------------------------|-------------|
| Triple Cabin | 2699 EUR pp |
| Double Cabin | 2928 EUR pp |
| Single Occupancy Double Bed | 4392 EUR pp |

09-May-2026 to 16-May-2026

| | |
|-----------------------------|-------------|
| Triple Cabin | 2699 EUR pp |
| Double Cabin | 2928 EUR pp |
| Single Occupancy Double Bed | 4392 EUR pp |



PRICING

16-May-2026 to 23-May-2026

| | |
|-----------------------------|-------------|
| Triple Cabin | 2699 EUR pp |
| Double Cabin | 2928 EUR pp |
| Single Occupancy Double Bed | 4392 EUR pp |

23-May-2026 to 30-May-2026

| | |
|-----------------------------|-------------|
| Triple Cabin | 2699 EUR pp |
| Double Cabin | 2928 EUR pp |
| Single Occupancy Double Bed | 4392 EUR pp |

30-May-2026 to 06-Jun-2026

| | |
|-----------------------------|-------------|
| Triple Cabin | 1890 EUR pp |
| Double Cabin | 2049 EUR pp |
| Single Occupancy Double Bed | 3073 EUR pp |

06-Jun-2026 to 13-Jun-2026

| | |
|-----------------------------|-------------|
| Triple Cabin | 1890 EUR pp |
| Double Cabin | 2049 EUR pp |
| Single Occupancy Double Bed | 3073 EUR pp |

13-Jun-2026 to 20-Jun-2026

| | |
|-----------------------------|-------------|
| Triple Cabin | 1890 EUR pp |
| Double Cabin | 2049 EUR pp |
| Single Occupancy Double Bed | 3073 EUR pp |

20-Jun-2026 to 27-Jun-2026

| | |
|-----------------------------|-------------|
| Triple Cabin | 1890 EUR pp |
| Double Cabin | 2049 EUR pp |
| Single Occupancy Double Bed | 3073 EUR pp |

27-Jun-2026 to 04-Jul-2026

| | |
|-----------------------------|-------------|
| Triple Cabin | 1890 EUR pp |
| Double Cabin | 2049 EUR pp |
| Single Occupancy Double Bed | 3073 EUR pp |

04-Jul-2026 to 11-Jul-2026

| | |
|-----------------------------|-------------|
| Triple Cabin | 2699 EUR pp |
| Double Cabin | 2928 EUR pp |
| Single Occupancy Double Bed | 4392 EUR pp |

11-Jul-2026 to 18-Jul-2026

| | |
|-----------------------------|-------------|
| Triple Cabin | 2699 EUR pp |
| Double Cabin | 2928 EUR pp |
| Single Occupancy Double Bed | 4392 EUR pp |

18-Jul-2026 to 25-Jul-2026

| | |
|-----------------------------|-------------|
| Triple Cabin | 2699 EUR pp |
| Double Cabin | 2928 EUR pp |
| Single Occupancy Double Bed | 4392 EUR pp |

25-Jul-2026 to 01-Aug-2026

| | |
|-----------------------------|-------------|
| Triple Cabin | 2699 EUR pp |
| Double Cabin | 2928 EUR pp |
| Single Occupancy Double Bed | 4392 EUR pp |

01-Aug-2026 to 08-Aug-2026

| | |
|-----------------------------|-------------|
| Triple Cabin | 2699 EUR pp |
| Double Cabin | 2928 EUR pp |
| Single Occupancy Double Bed | 4392 EUR pp |



PRICING

08-Aug-2026 to 15-Aug-2026

| | |
|-----------------------------|-------------|
| Triple Cabin | 2699 EUR pp |
| Double Cabin | 2928 EUR pp |
| Single Occupancy Double Bed | 4392 EUR pp |

15-Aug-2026 to 22-Aug-2026

| | |
|-----------------------------|-------------|
| Triple Cabin | 2699 EUR pp |
| Double Cabin | 2928 EUR pp |
| Single Occupancy Double Bed | 4392 EUR pp |

22-Aug-2026 to 29-Aug-2026

| | |
|-----------------------------|-------------|
| Triple Cabin | 2699 EUR pp |
| Double Cabin | 2928 EUR pp |
| Single Occupancy Double Bed | 4392 EUR pp |

29-Aug-2026 to 05-Sep-2026

| | |
|-----------------------------|-------------|
| Triple Cabin | 2699 EUR pp |
| Double Cabin | 2928 EUR pp |
| Single Occupancy Double Bed | 4392 EUR pp |

05-Sep-2026 to 12-Sep-2026

| | |
|-----------------------------|-------------|
| Triple Cabin | 2699 EUR pp |
| Double Cabin | 2928 EUR pp |
| Single Occupancy Double Bed | 4392 EUR pp |

12-Sep-2026 to 19-Sep-2026

| | |
|-----------------------------|-------------|
| Triple Cabin | 2699 EUR pp |
| Double Cabin | 2928 EUR pp |
| Single Occupancy Double Bed | 4392 EUR pp |

19-Sep-2026 to 26-Sep-2026

| | |
|-----------------------------|-------------|
| Triple Cabin | 2699 EUR pp |
| Double Cabin | 2928 EUR pp |
| Single Occupancy Double Bed | 4392 EUR pp |

26-Sep-2026 to 03-Oct-2026

| | |
|-----------------------------|-------------|
| Triple Cabin | 2699 EUR pp |
| Double Cabin | 2928 EUR pp |
| Single Occupancy Double Bed | 4392 EUR pp |

03-Oct-2026 to 10-Oct-2026

| | |
|-----------------------------|-------------|
| Triple Cabin | 2699 EUR pp |
| Double Cabin | 2928 EUR pp |
| Single Occupancy Double Bed | 4392 EUR pp |

10-Oct-2026 to 17-Oct-2026

| | |
|-----------------------------|-------------|
| Triple Cabin | 2699 EUR pp |
| Double Cabin | 2928 EUR pp |
| Single Occupancy Double Bed | 4392 EUR pp |

17-Oct-2026 to 24-Oct-2026

| | |
|-----------------------------|-------------|
| Triple Cabin | 2699 EUR pp |
| Double Cabin | 2928 EUR pp |
| Single Occupancy Double Bed | 4392 EUR pp |

24-Oct-2026 to 31-Oct-2026

| | |
|-----------------------------|-------------|
| Triple Cabin | 2699 EUR pp |
| Double Cabin | 2928 EUR pp |
| Single Occupancy Double Bed | 4392 EUR pp |



PRICING

31-Oct-2026 to 07-Nov-2026

| | |
|-----------------------------|-------------|
| Triple Cabin | 2699 EUR pp |
| Double Cabin | 2928 EUR pp |
| Single Occupancy Double Bed | 4392 EUR pp |

ADDITIONAL CHARGES: Conservation Fee 200 EUR pp

Optional extras & upgrades

Diving - available at extra charge onboard. From 40 EUR

Each Day's First Dive: Euro 40 / Subsequent Dives: Euro 20 e.g. for 2 dives in a day the charge would be Euro 60 per day. Full diving equipment rental - Euro 10 per piece or Euro 30 for full set (per day). Introductory dive (1 to 1 with instructor) - Euro 70 per dive.

PADI Open Water courses & Diving Packages

Please contact us for more details