



SERENE GREENLAND - EXPLORING THE LARGEST FJORD SYSTEM ON EARTH

Greenland 's remote east coast

The vast, untouched wilderness of Greenland's rarely-visited east coast is accessible by ship for only a few months of the year. Our destination is Scoresby Sund, an immense system of fjords and glaciers that fans out over 24,000 square miles where you'll soak up the beauty, silence and natural wonder of this truly unique destination.

Nature, wildlife and resilient culture

As we sail, watch for seals on the ice floes, whales in the water, and birds such as Snowy Owls and Greenlandic Gyrfalcons in the air. You'll learn about the fascinating history, traditions, and culture of the people of Ittoqqortoormiit, one of the most remote settlements on the planet.



ITINERARY

DAY 1 Cosmopolitan Reykjavík

Explore the world's northernmost capital

Your adventure begins in Reykjavik.

A laid-back city of art, culture and history, delightful Reykjavik is well worth spending some time getting to know.

Take a stroll along Laugavegur with its boutiques and outdoor shops, gaze in awe at the striking Hallgrímskirkja



Wild Earth Travel

Small Ships, Big Adventures

wildearth-travel.com

info@wildearth-travel.com

Church, and drop in on the fascinating Reykjavik Art Museum.

If you have the time, we recommend booking a Pre-Programme with us and discovering some of Iceland's natural highlights before your cruise begins.

DAY 2 At Sea

Crossing the Denmark Strait

As we sail into the Greenland Sea on our way to the world's largest island, it's time to relax, find your sea legs and get acquainted with the onboard facilities.

The Expedition Team will give a number of talks about your upcoming adventure and will explain the protocols of respectfully visiting wildlife habitats and Indigenous Arctic communities. In the Science Center, you'll find out what to expect in the epic fjords of Scoresby Sund.

If you're feeling active, head to the gym and do a workout with a view. On the other hand, you could sample the sauna, laze in a hot tub, indulge yourself at the onboard eateries or just find a quiet corner to read a book with a hot drink. Love science? Then why not join one of our onboard Citizen Science projects, a fun and engaging way to contribute to global research.

DAY 3-8 Scoresby Sund fjord system

Explore the largest fjord system on Earth

You'll spend the next days exploring the vast wilderness of Scoresby Sund, the world's largest fjord system.

Cruising peacefully against a backdrop of looming mountains, blue icebergs and mirror-like waters, you'll seek out wildlife such as whales and Greenlandic Gyrfalcons. Making the most of the conditions, we'll pack in as many shore landings, nature walks, kayaking tours and wildlife sightings as possible.

You'll visit Ittoqqortoormiit, the most remote inhabited community in the

Western Hemisphere. And if conditions allow, we'll sail towards the ever-changing sea ice edge to scout for wildlife.

If you want to do your bit, you can participate in Citizen Science projects that help scientists understand how this region is changing.

DAY 9 Denmark Strait

Heading back to Iceland

After exploring the remote beauty of Greenland, we set our course back for Iceland. Spend the time at sea recapping your experiences with new friends, studying nature in the Science Center, listening to a lecture or two, or just relaxing on deck. Look out for the seabirds that follow our ship and keep an eye out for whales.

As you reflect on your cruise, from witnessing the delicate ecology of the fjord systems to the ethereal elegance of the floating ice, east Greenland's beauty is sure to have left its mark on you.

DAY 10 Reykjavik

End of the expedition

Your Greenland expedition cruise has come full circle as we arrive back in Iceland's laid-back capital. Alas, it's time to say goodbye to the crew, the Expedition Team and your fellow guests - some of whom will no doubt be new friends.

If you're not yet ready to end your adventure, you can join our optional Post-Programme before you head home. Or why not simply extend your stay and enjoy Reykjavik and its surrounding geothermal attractions.

Please Note:

Itineraries are subject to change.

Wild Earth Travel
Small Ships, Big Adventures

0800 945 3327 (within New Zealand) | +64 (0) 3 365 1355 | **1800 107 715** (within Australia)

info@wildearth-travel.com | **wildearth-travel.com**



Wild Earth Travel

Small Ships, Big Adventures

wildearth-travel.com

info@wildearth-travel.com

YOUR SHIP: SPITSBERGEN

YOUR SHIP:	Spitsbergen
VESSEL TYPE:	Expedition
LENGTH:	100 metres
PASSENGER CAPACITY:	335
BUILT/REFURBISHED:	2009 / 2016

MS Spitsbergen is named after the crown jewel of Arctic Norway - the Svalbard archipelago and its biggest island, Spitsbergen. After complete reconstruction, MS Spitsbergen joined the Hurtigruten fleet in 2016. The ship features high technical standards as well as comfortable, modern public areas and cabins. The vessel's fresh Scandinavian design reflects a colour palette derived from the sea. She is modern and environmentally progressive, and we plan further improvements that will reduce emissions and fuel consumption even more. The new ship's maneuverability and optimal size make her quite suitable for exploring polar waters.

Expedition team on board

MS Spitsbergen has its own on-board Expedition Team and serves as a university at sea. Interesting lectures inside the ship as well as out on the sun deck make this an exciting and educational journey. Topics depend on the season and the waters we sail in. The Expedition Team host a lecture programme and evening gatherings daily. Out on deck you can participate in live points of interest to learn more about the nature, culture and other phenomena we encounter along the coast. In addition, the Expedition Team will introduce you to the

uniquely Norwegian notion of `friluftsliv` (outdoor life), and encourage you take part in `friluftsliv` hikes and activities during the journey.

Our dedicated Expedition Teams have one mission: to enhance your experience by engaging you and interpreting the nature, wildlife, and culture you encounter during the voyage. Read more about our Expedition Teams here.

Ship facilities

Expedition Team - Explorer bar - Panoramic lounge - Explorer lounge - Compass Service Centre - Brygga bistro - Shop - Torget main dining - Wi-Fi - Sauna - Fitness room - Lift - Hot tub - Guest launderette - Panoramic deck 8 - Outside bar for events, decks 7 & 8



decks 7 & 8

Wild Earth Travel
Small Ships, Big Adventures

0800 945 3327 (within New Zealand) | +64 (0) 3 365 1355 | **1800 107 715** (within Australia)

info@wildearth-travel.com | wildearth-travel.com

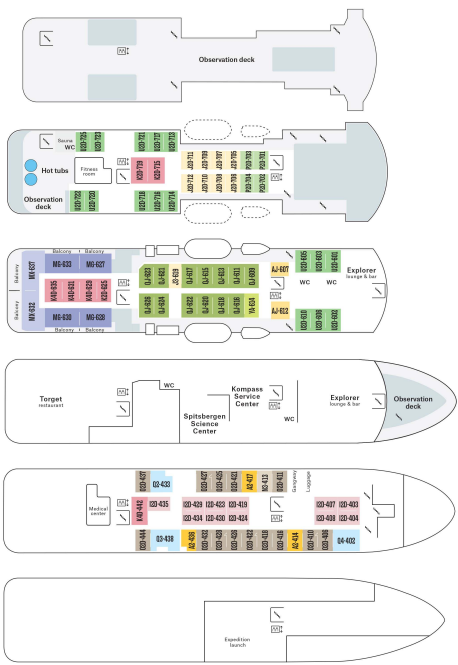


Wild Earth Travel
Small Ships, Big Adventures

wildearth-travel.com

info@wildearth-travel.com

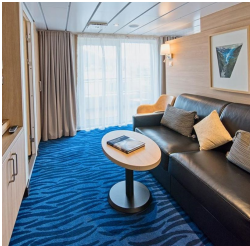
INSIDE YOUR SHIP



Arctic Superior. From



Expedition Suite. From



Polar Inside. From



Polar Outside. From





Wild Earth Travel

Small Ships, Big Adventures

wildearth-travel.com

info@wildearth-travel.com

PRICING

11-Aug-2025 to 20-Aug-2025

Polar Inside. From	8510 AUD pp
Polar Outside. From	9956 AUD pp
Arctic Superior. From	11062 AUD pp
Expedition Suite. From	14466 AUD pp

01-Sep-2025 to 10-Sep-2025

Polar Inside. From	8199 AUD pp
Polar Outside. From	9593 AUD pp
Arctic Superior. From	10659 AUD pp
Expedition Suite. From	13939 AUD pp

31-Aug-2026 to 09-Sep-2026

Polar Inside. From	10230 AUD pp
Polar Outside. From	11969 AUD pp
Arctic Superior. From	13299 AUD pp
Expedition Suite. From	17392 AUD pp

Wild Earth Travel
Small Ships, Big Adventures

0800 945 3327 (within New Zealand) | +64 (0) 3 365 1355 | **1800 107 715** (within Australia)

info@wildearth-travel.com | **wildearth-travel.com**