



Wild Earth Travel

Small Ships, Big Adventures

wildearth-travel.com

info@wildearth-travel.com

SECRETS OF THE NORTH SEA - DENMARK, GERMANY, NETHERLANDS, BELGIUM LUXURY CRUISE

From Denmark's coasts to the shores of Great Britain, PONANT invites you on a unique journey at the crossing point of the North and Baltic Seas. This timeless 11-day interlude aboard Le Laperouse takes you on a voyage of discovery of these Hanseatic and Flanders cities, with their rich history and powerful architectural and cultural heritage.

Throughout your journey, you will benefit from an excursion included per person per port of call, to choose from a selection offered by PONANT. During this cruise, you can admire the magnificent historic centre of Lubeck, the former capital of the Hanseatic League and a UNESCO World Heritage Site, and from Travemunde, climb aboard the legendary Molli steam train built in 1886, which runs on the Baltic coast's oldest narrow-gauge steam railway from Waremunde. The diversity of experiences on offer promises you intense and varied moments (to discover the full range of excursions, go to the itinerary tab).

From Copenhagen, a city full of art and history, Le Laperouse heads south to the German coast and the pleasant seaside town of Warnemunde, lying north of Rostock. There you can visit the Hanseatic town and stroll through its narrow streets to discover the pastel-coloured merchants houses of the Renaissance, Saint Mary's Church and its magnificent town hall. A short distance to the west, Travemunde (at the mouth of the Trave) is a real holiday haven, famous for its golden beaches, its imposing lighthouse, its architecture and its impressive maritime history.

Wild Earth Travel

Small Ships, Big Adventures

0800 945 3327 (within New Zealand) | +64 (0) 3 365 1355 | **1800 107 715** (within Australia)

info@wildearth-travel.com | **wildearth-travel.com**

Wild Earth Travel

Small Ships, Big Adventures

wildearth-travel.com

info@wildearth-travel.com

You now sail down the Kiel Canal to the Netherlands and the port of Harlingen. Once a whaling centre and now a port that specialises in shrimping, this dynamic town offers travellers the chance to admire some fascinating sites and museums. In Scheveningen, the misty spray of the North Sea speaks of the region's marine legends, while the little cobbled streets of its historic centre reveal their splendid architectural treasures. Then, in Amsterdam, you can stroll through the city of canals and enjoy the hospitality of its inhabitants. The city is famous for its museums, but you will also fall under the charm of the incredible flower market and the superb façades of the beautiful houses.

You now sail along the Belgian coastline, and at the end of the Scheldt River, the port city of Antwerp rises before you. This lively, dynamic city still has magnificent architectural jewels, including the Grand Place, bordered by splendid merchant houses dating from the 16th and 17th centuries. Meanwhile, in Ostend, you can admire the Belle Époque facades of this seaside town, which is highly popular for its light sandy beach, and home to the Kunstmuseum aan Zee, which retraces the history of Belgian art since 1830.

The culminating point comes with London, the cosmopolitan capital of the United Kingdom, with its rich historical heritage and extraordinary artistic avant-garde, after you pass beneath the legendary Tower Bridge.



wer Bridge.

ITINERARY

Day 1 COPENHAGEN

Connected to the far eastern side of Sealand island, a few kilometres away from the Swedish coasts, Copenhagen offers you the high colour of Scandinavian capitals. You can discover the city's riches that weaves through the canal networks through the historical districts of Christiansborg and Nyhavn. Many palaces provide an aperçu of Danish history. For eating, you can try out the smørrebrød, traditional danish sandwiches made with ham, cheese or smoked fish.

Day 2 AT SEA & WARNEMÜNDE (ROSTOCK)

Wild Earth Travel

Small Ships, Big Adventures

0800 945 3327 (within New Zealand) | +64 (0) 3 365 1355 | **1800 107 715** (within Australia)

info@wildearth-travel.com | **wildearth-travel.com**

Wild Earth Travel

Small Ships, Big Adventures



wildearth-travel.com

info@wildearth-travel.com

During your journey at sea, make the most of the many services and activities on board. Treat yourself to a moment of relaxation in the spa or stay in shape in the fitness centre. Depending on the season, let yourself be tempted by the swimming pool or a spot of sunbathing. This journey without a port of call will also be an opportunity to enjoy the conferences or shows proposed on board, depending on the activities offered, or to do some shopping in the boutique or to meet the PONANT photographers in their dedicated space. As for lovers of the open sea, they will be able to visit the ship's upper deck to admire the spectacle of the waves and perhaps be lucky enough to observe marine species. A truly enchanted interlude, combining comfort, rest and entertainment.

Located at the estuary of the Warnow river, Warnemünde is a highly popular German seaside resort on the Baltic Sea. This 12th-century fishing village became a port of crucial importance to the economy of the Hanseatic City of Rostock in the 14th century. Today, the old fishermen's houses have become shops and cafes, and beautiful mansions line the promenade. You will also be able to discover Rostock, where the city-centre architecture and the ramparts, built of bricks from Brandenburg, are a reminder of the city's position in the Hanseatic League. Succumb to the charms of the merchant houses around New Market Square or of Saint Mary's Church and its astronomical clock.

Day 3 TRAVEMÜNDE

Made famous by Thomas Mann and Dostoevsky, Travemünde has, since the 19th century, been a popular seaside resort for the cultural elites of Northern Europe. The colourful beach huts that line the 4.5 km of fine sandy beach, the seafront walkway lined with boutiques and cafes and its wide streets have kept their yesteryear charm. From Travemünde, you can discover the magnificent historical centre of Lübeck, for the former capital of the Hanseatic League, a UNESCO World Heritage site. Characterised by its unique profile with seven bell towers and the island of its Old Town surrounded by quaysides and parks, the city has managed to preserve many patrician dwellings of the 15th and 16th centuries and a monumental fortified town gate.

Day 4 CROSSING THE KIEL CANAL

Spanning around one hundred kilometres, the Kiel Canal links the North Sea to the Baltic Sea, crossing the Jutland peninsula. It is the world's busiest artificial waterway.

Day 5 HARLINGEN

Lying at the mouth of the Harinxma canal in the Frise province of the Netherlands, Harlingen has always had a very close relationship with the sea. Once a whale fishing centre and today a port specialised in shrimp fishing, its dynamism has transformed it into a modern city which also offers travellers museums and sites of interest. The local museum, the Hannemahuis, is housed in an 18th Century dwelling and presents a collection of regional furniture and objects retracing the history of the city. The lighthouse and the city hall with their typically Dutch architecture also deserve a visit.

Day 6 SCHEVENINGEN (THE HAGUE)

Scheveningen, a former small fishing village, is the seaside resort of La Hague, which is the seat of the government of the Netherlands and official residence of its king, and also called the "legal capital of the world". Only a 20-minute tram ride from the city centre, Scheveningen has a holiday feel, with its long fine sandy beach, its kitesurf boards and its windsurf boards. On the promenade that runs along the sea, you will admire the Grand Hotel Amrath Kurhaus, a jewel from the baroque era, as well as the De Pier, a 382-metre (1,250-foot) long pier -- one of the longest in the world -- as well as many trendy restaurants.

Day 7 AMSTERDAM

Amsterdam is above all a city of water. Omnipresent, it guides the traveller's

Wild Earth Travel

Small Ships, Big Adventures

0800 945 3327 (within New Zealand) | +64 (0) 3 365 1355 | **1800 107 715** (within Australia)

info@wildearth-travel.com | wildearth-travel.com

Wild Earth Travel

Small Ships, Big Adventures



wildearth-travel.com

info@wildearth-travel.com

steps, from street to street, from canal to canal, its bridges seeming to bend their arches to form allegiances with him. Let yourself fall in love with the grace and romanticism that emanate from this charming scene. Known around the world for its museums and the finest collection of the Dutch and Flemish masters of the golden age, this city is home to many other treasures. Take a stroll through the old district or pay a visit to a diamond house - do not miss this "treasure chest" of the Netherlands.

Day 8 ANTWERP

Located in the Flemish region of Belgium, Antwerp is worth a visit for its remarkable architectural heritage. In this moderately-sized, cosmopolitan city, you will be able to stroll around the ancient city centre, dominated by the most important monument in Antwerp, the Notre-Dame Cathedral, a UNESCO World Heritage site. The museums of the city retrace the history of Antwerp, including the home of Rubens, containing the works of the painter, and the Plantin-Moretus museum, a print works and publishing house that are UNESCO listed. From Grote Markt, the central square in the city, you will be captivated by the attractive sight formed by the unusual medieval architecture of the guild houses.

Day 9 OSTEND

Located on the Flemish coastline, half way between France and the Netherlands, the elegant city of Ostend is a favourite summer destination for Belgians. You can enjoy the "queen of beaches", a stretch of fine white sand punctuated by breakwaters, covered by the North Sea at high tide. The seafront boasts sumptuous facades from the Belle Epoque, such as Villa Maritza, which stands witness to this seaside town's rich past. Art amateurs will enjoy the excellent Kunstmuseum Zee, where a retrospective of Belgian art dating from 1830 is on display.

Days 10 - 11 LONDON

The main residence of the British monarch, financial hub and seat of British government, London is the economic and cultural heart of the country. A city of contrasts, attached to its traditions while buzzing with modernity, the capital of the United Kingdom has countless historic districts and notable sites to explore. From Hyde Park to the City through Westminster and Trafalgar Square, get ready to take on London's frenetic tempo. In between a visit to the National Gallery, a stroll through Covent Garden and a trip to Tower Bridge, you can take a quiet breather in one of London's many beautiful parks and gardens.

Please note:

Itineraries are subject to change.

Wild Earth Travel

Small Ships, Big Adventures

0800 945 3327 (within New Zealand) | +64 (0) 3 365 1355 | **1800 107 715** (within Australia)

info@wildearth-travel.com | **wildearth-travel.com**

Wild Earth Travel

Small Ships, Big Adventures



wildearth-travel.com

info@wildearth-travel.com

YOUR SHIP: LE LAPEROUSE

YOUR SHIP:	Le Laperouse
VESSEL TYPE:	Luxury
LENGTH:	127 metres
PASSENGER CAPACITY:	92 cabins
BUILT/REFURBISHED:	2017/2018

Featuring innovative and environmentally-friendly equipment, elegantly designed cabins, spacious suites with large windows, and lounge areas that open onto the outside, this new limited-capacity yacht boasting just 92 cabins and suites will offer you a truly unique cruising experience.

Aboard this ship that flies the French flag, you will experience the incomparable pleasure of an intimate cruise, with the possibility of exploring an ever-increasing range of destinations in an ethnic-chic ambiance with luxury service.

Experience a luxurious setting where the accent is on authenticity and passion for travel.

RESTAURANTS

As it is an essential part of French culture, gastronomy will naturally have pride of place aboard this new ship. Through its two restaurants, Le Laperouse will invite you on a journey to elegance and epicureanism.

In a relaxed atmosphere, a first dining area located on Deck 3 and able to seat 70 will serve grilled meats daily, along with a variety of salads and desserts.

To the back of Deck 4, you will find a 260 m² panoramic restaurant which can accommodate all of our passengers in a

single sitting. Designed differently to that on our other ships, this dining area, which opens onto the outside, will have a buffet of salads, desserts and cheeses at your disposal. Our discreet and attentive crew will provide table service for hot meals.

PUBLIC AREAS

Like Le Boreal and its sisterships, Le Laperouse has many common areas that are designed and equipped to meet all of your needs while preserving the intimacy of each passenger.

A 140 m² reception area includes: A reception/concierge desk, An excursions desk, The ship's administrative services, The sales office, manned by our Guest Relations Officer, Our 50 m² boutique which sells clothing, jewellery, beauty products, postcards and various accessories, Toilets accessible to passengers with reduced mobility.

A new hydraulic platform with adjustable height provides: Easier boarding than on any other cruise ship, Easier Zodiac embarkation and disembarkation for expeditions, Easier access to the sea for swimming and practising various water sports such as kayaking or paddle-boarding.

A pool deck offering: A pool with a panoramic view, equipped with a counter-current swimming system, A pleasant solarium, An outdoor bar and lounge with armchairs and sofas.

A 200 m² main lounge which can accommodate all of our passengers to share convivial moments and to host activities organised during the day or evening.

Lastly, a theatre that seats 188, equipped with: The latest sound and lighting technology, A LED wall as the stage backdrop, for the projection of high-resolution images and videos.

Wild Earth Travel

Small Ships, Big Adventures

0800 945 3327 (within New Zealand) | +64 (0) 3 365 1355 | **1800 107 715** (within Australia)

info@wildearth-travel.com | **wildearth-travel.com**



Wild Earth Travel

Small Ships, Big Adventures



wildearth-travel.com

info@wildearth-travel.com



and videos.



Wild Earth Travel

Small Ships, Big Adventures

0800 945 3327 (within New Zealand) | +64 (0) 3 365 1355 | **1800 107 715** (within Australia)

info@wildearth-travel.com | **wildearth-travel.com**

Wild Earth Travel

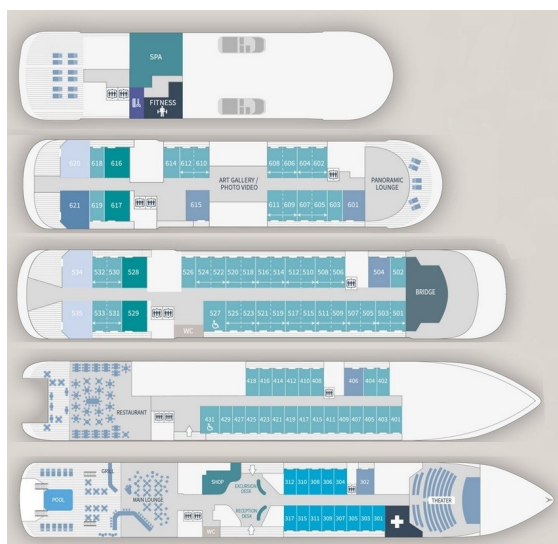
Small Ships, Big Adventures



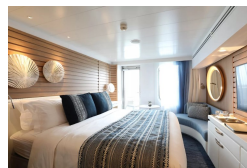
wildearth-travel.com

info@wildearth-travel.com

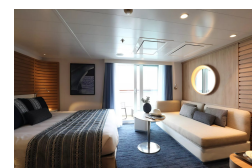
INSIDE YOUR SHIP



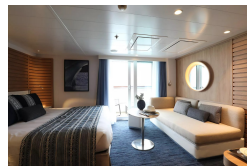
Deluxe Stateroom



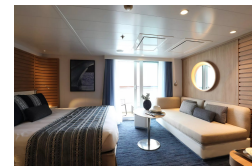
Deluxe Suite



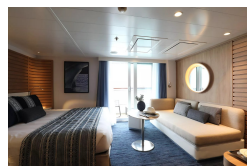
Deluxe Suite Deck 4



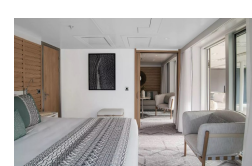
Deluxe Suite Deck 5



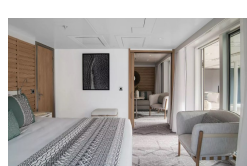
Deluxe Suite Deck 6



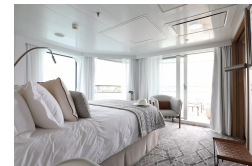
Grand Deluxe Suite



Grand Deluxe Suite Deck 6



Owner's Suite



Wild Earth Travel
Small Ships, Big Adventures

0800 945 3327 (within New Zealand) | +64 (0) 3 365 1355 | 1800 107 715 (within Australia)

info@wildearth-travel.com | wildearth-travel.com

Wild Earth Travel

Small Ships, Big Adventures



wildearth-travel.com

info@wildearth-travel.com

PRICING

20-Aug-2025 to 30-Aug-2025

Deluxe Stateroom	9290 AUD pp
Prestige Stateroom Deck 4	9780 AUD pp
Prestige Stateroom Deck 5	10060 AUD pp
Prestige Stateroom Deck 6	10450 AUD pp
Deluxe Suite Deck 4	14020 AUD pp
Deluxe Suite Deck 5	14020 AUD pp
Deluxe Suite Deck 6	14020 AUD pp
Deluxe Suite	14020 AUD pp
Prestige Suite Deck 5	15090 AUD pp
Prestige Suite Deck 6	15570 AUD pp
Privilege Suite	15950 AUD pp
Privilege Suite Deck 6	15950 AUD pp
Grand Deluxe Suite	16440 AUD pp
Grand Deluxe Suite Deck 6	16440 AUD pp
Owner's Suite	20240 AUD pp

ADDITIONAL CHARGES:

Port Taxes 740 AUD pp

Wild Earth Travel

Small Ships, Big Adventures

0800 945 3327 (within New Zealand) | +64 (0) 3 365 1355 | **1800 107 715** (within Australia)

info@wildearth-travel.com | **wildearth-travel.com**



Wild Earth Travel

Small Ships, Big Adventures



wildearth-travel.com

info@wildearth-travel.com

SPECIAL OFFERS

Online prices reflect the current brochure fare savings of up to 30%. Prices may change based on demand. Terms and conditions apply. This special offer is subject to availability. Please contact us for more details.



Wild Earth Travel

Small Ships, Big Adventures

0800 945 3327 (within New Zealand) | +64 (0) 3 365 1355 | **1800 107 715** (within Australia)

info@wildearth-travel.com | **wildearth-travel.com**