

Wild Earth Travel

Small Ships, Big Adventures

wildearth-travel.com

info@wildearth-travel.com

SECRETS OF CENTRAL AMERICA - 11 DAY PANAMA & COSTA RICA CRUISE

Connecting two continents, Panama and Costa Rica both possess unique biodiversity and landscapes. During this expedition cruise, tropical forest, impressive mangrove, white sandy beaches and crystal-clear water will make up the decor of an extraordinary experience, between two oceans, thanks to the crossing of the mythical Panama Canal. From historic sites and preserved archipelagos to coral islets and nature reserves, you will explore this region's treasures in the company of naturalist guides, discovering the history of the local communities as well as the incredible wildlife to be found here.

The wildlife encounters are possible experiences and cannot be guaranteed.



ITINERARY

Day 1 COLÓN

Colón is the second largest city in Panama, at the Caribbean entrance of the Panama Canal. Colón is today an important port, and the free trade zone created in 1953 contributed greatly to the development of the city. Colón was founded in 1850 by Americans working on the Panama railroad connecting the Atlantic and Pacific coasts through the isthmus of Panama; the city rapidly overshadowed the older Caribbean ports of Panama when the canal opened.

Day 2 FORT SAN LORENZO (COLON)

In the Colón District, Fort San Lorenzo faces the sea, its canons pointing towards the horizon as they used to under the Spanish Crown. This

Wild Earth Travel

Small Ships, Big Adventures

0800 945 3327 (within New Zealand) | +64 (0) 3 365 1355 | **1800 107 715** (within Australia)

info@wildearth-travel.com | **wildearth-travel.com**

Wild Earth Travel

Small Ships, Big Adventures

wildearth-travel.com

info@wildearth-travel.com

construction is part of a group of buildings exemplifying the military architecture of the 17th and 18th centuries along the Caribbean coast of Panama, hence its status as a UNESCO World Heritage Site. Wander along the fort's alleyways accompanied by the melodious singing of the birds that have made the surrounding forest their home. Enjoy an unforgettable port of call combining history and walking in nature.

Day 3 SAN BLAS ISLANDS

Located on the north-east coast of Panama, the San Blas archipelago is a string of coral islands in the heart of the Caribbean Sea. More than 300 islands and cays cover an area of 300 square kilometres offering travellers a multitude of treasures. Sheltered behind a long coral reef, the San Blas Islands are full of enchanting anchorages. The long sandy white beaches bound by crystal-clear waters will allow you to relax and enjoy incredible marine fauna before engaging with the Kunas Indian community. Still subsisting on hunting and fishing, they will welcome you in their villages of bamboo houses gathered near the beaches.

Day 4 CROSSING THE PANAMA CANAL

Aboard your ship, experience something unique, that has inspired the imagination of numerous adventurers in the 20th century: sailing the Panama Canal. Its construction started in 1880 under the direction of Ferdinand de Lesseps. Abandoned then resumed, this marvel of engineering was completed by the United States and opened in 1914. The canal crosses the Isthmus of Panama and links the Atlantic to the Pacific. Including three levels of locks and by raising ships to the level of Lake Gatun, almost as if the water was a lift, it allows them to avoid having to round Cape Horn.

Day 5 SAILING AROUND PACHECA ISLAND & PEARLS ISLANDS

Pacheca is a small uninhabited island in the far north of the Pearl Islands, home to numerous birds that our naturalist guides will help you to observe and recognise from the ship's deck. The Pearl Islands archipelago, formed by over 220 islands and islets, is named in memory of the pearl oysters present in the Gulf of Panama. In colonial times, the pearls were extracted and used as ornaments or currency. "La Peregrina" was discovered in this archipelago: this pearl is famous for its perfection and for belonging to several royals and, more recently, Elizabeth Taylor. The Pearl Islands archipelago, formed by over 220

islands and islets, is named in memory of the pearl oysters present in the Gulf of Panama. In colonial times, the pearls were extracted and used as ornaments or currency. "La Peregrina" was discovered in this archipelago: this pearl is famous for its perfection and for belonging to several royals and, more recently, Elizabeth Taylor. While the pearls have now disappeared from the azure waters of this paradise with its history of adventures and piracy, you can still swim from the sandy white beaches and observe shoals of multi-coloured fish performing their gracious ballet.

Day 6 PLAYA MUERTO, DARIEN NATIONAL PARK

The most remote and least developed region of Panama, the province of Darien is an unspoilt land with an extremely rich variety of flora and fauna. Listed by UNESCO as World Heritage, Darien National Park offers its extraordinary scenery of rocky coastlines, mountain ranges, mangroves, rivers and creeks. Discover Playa Muerto, a tiny coastal village home to the Emberas Amerindian community. You will visit the village, attend traditional songs and dances of the locals, and admire beautiful local craft.

Day 7 COIBA ISLAND

Coiba Island once housed a prison with a sinister reputation that has since been abandoned. Today the island is a National Park and a UNESCO World Heritage Site and offers many activities. Experience the emotion of the first explorers by heading deep into the virgin rainforest, untouched by human hand, and carve a path for yourself through the creepers, under the watchful gaze of the multitudes of birds. You may be lucky enough to see the Howler Monkey, only visible here. To conclude this unique adventure, take a dip in the turquoise waters of the unspoiled beaches on the island, among the sea turtles and the tropical fish swimming elegantly through the coral reefs.

Day 8 RIO ESQUINAS

The beauty of Costa Rica and the richness of its biodiversity reveal themselves at this port of call in the heart of the mangrove. In the meanders of Rio Esquinas, a tropical corner of paradise, you will discover an incredibly dense ecosystem. Aboard your Zodiac dinghy, you will brush past the tangled arms formed by the roots of the mangrove trees. This green and lush gallery forest and its inhabitants welcome you. Watch closely: common squirrel monkeys, white ibis, Eurasian whimbrels, ospreys, toucans, snowy egrets and great blue

Wild Earth Travel

Small Ships, Big Adventures

0800 945 3327 (within New Zealand) | +64 (0) 3 365 1355 | **1800 107 715** (within Australia)

info@wildearth-travel.com | **wildearth-travel.com**



Wild Earth Travel

Small Ships, Big Adventures

wildearth-travel.com

info@wildearth-travel.com

herons can be found hiding here.

Day 9 DRAKE BAY

Located on Costa Rica's remote Osa Peninsula, Corcovado National Park covers 164 square miles, making it the country's largest national park, the largest primary forest on the American Pacific coast, and one of the few remaining large areas of lowland tropical rain forests in the world.

Day 10 CURÚ WILDLIFE REFUGE

On the southern part of the Nicoya Peninsula, the small Curu Wildlife Refuge is the oldest protected park in Costa Rica. This refuge is an exemplary site in terms of ecotourism as well as a research centre for scientists from all over the world. It has been at the heart of an original conservation and sustainable development project since the 1930s. After a short zodiac trip, you will discover, via the paths that criss-cross the tropical forest and lead to magnificent beaches, the most emblematic species of Costa Rica: monkeys, iguanas and over 200 bird species. Since their recent reintroduction, the scarlet macaw and the spider monkey have thrived in this preserved environment.

Day 11 PUNTARENAS

The capital of the eponymous province, Puntarenas is sometimes called "the pearl of the Pacific", for its unique charm. It sits on the Pacific coast of Costa Rica, along the Gulf of Nicoya, lined with long expanses of wild natural environments. Further inland, among the countless natural wonders to be found in the generous rainforest of the Costa Rica's national parks, Poas and Arena volcanoes towers up in all their majestic glory. In this luxuriant natural setting, Costa Rica protects one of the planet's richest biodiversity: monkeys, sloths, tropical birds, iguanas, crocodiles, waterfalls, canyons, and more than ten thousand species of tropical plants.

Please Note:

Itineraries are subject to change.



Wild Earth Travel
Small Ships, Big Adventures

0800 945 3327 (within New Zealand) | +64 (0) 3 365 1355 | **1800 107 715** (within Australia)

info@wildearth-travel.com | **wildearth-travel.com**



Wild Earth Travel

Small Ships, Big Adventures

wildearth-travel.com

info@wildearth-travel.com

YOUR SHIP: LE BELLOT

YOUR SHIP:	Le Bellot
VESSEL TYPE:	Luxury Expedition / Cruise Ship
LENGTH:	131 metres
PASSENGER CAPACITY:	184
BUILT/REFURBISHED:	2019-2020

Featuring innovative and environmentally-friendly equipment, elegantly designed staterooms, spacious suites with large windows, and lounge areas that open onto the outside, this new limited-capacity yacht boasting just 92 staterooms and suites will offer you a truly unique cruising experience.

As the first ship in a new series that remains true to the Ponant spirit, Le Bellot will embody the unique atmosphere that is the cruise line's hallmark: a subtle blend of refinement, intimacy and comfort.

Aboard this ship that flies the French flag, you will experience the incomparable pleasure of an intimate cruise, with the possibility of exploring an ever-increasing range of destinations in an ethnic-chic ambiance with luxury service.

Experience a luxurious setting where the accent is on authenticity and passion for travel.

RESTAURANTS

As it is an essential part of French culture, gastronomy will naturally have pride of place aboard this new ship.

To the back of Deck 4, you will find a 260 m² panoramic restaurant which can accommodate all of our passengers in a single sitting. Designed differently to that on our other ships, this

dining area, which opens onto the outside, will have a buffet of salads, desserts and cheeses at your disposal. Our discreet and attentive crew will provide table service for hot meals.

In a relaxed atmosphere, an outdoor grill on Deck 3 will serve grilled meats with a variety of salads and desserts.

PUBLIC AREAS

Le Bellot has many common areas that are designed and equipped to meet all of your needs while preserving the intimacy of each passenger.

A 140 m² reception area includes:

A reception/concierge desk,

An excursions desk,

The ship's administrative services,

The sales office, manned by our Guest Relations Officer,

Our 50 m² boutique which sells clothing, jewellery, beauty products, postcards and various accessories,

Toilets accessible to passengers with reduced mobility.

A new hydraulic platform with adjustable height provides:

Easier boarding than on any other cruise ship,

Easier Zodiac embarkation and disembarkation for expeditions,

Easier access to the sea for swimming and practising various water sports such as kayaking or paddle-boarding.

A pool deck offering:

A pool with a panoramic view, equipped with a counter-current swimming system,

A pleasant solarium,

An outdoor bar and lounge with armchairs and sofas.

A 200 m² main lounge which can accommodate all of our passengers to share convivial moments and to host activities



Wild Earth Travel
Small Ships, Big Adventures

0800 945 3327 (within New Zealand) | +64 (0) 3 365 1355 | **1800 107 715** (within Australia)

info@wildearth-travel.com | **wildearth-travel.com**



Wild Earth Travel

Small Ships, Big Adventures

wildearth-travel.com

info@wildearth-travel.com

organised during the day or evening.

Lastly, a theatre that seats 188, equipped with:

The latest sound and lighting technology,

A LED wall as the stage backdrop, for the projection of high-resolution images and videos.



and videos.



Wild Earth Travel

Small Ships, Big Adventures

0800 945 3327 (within New Zealand) | +64 (0) 3 365 1355 | **1800 107 715** (within Australia)

info@wildearth-travel.com | **wildearth-travel.com**

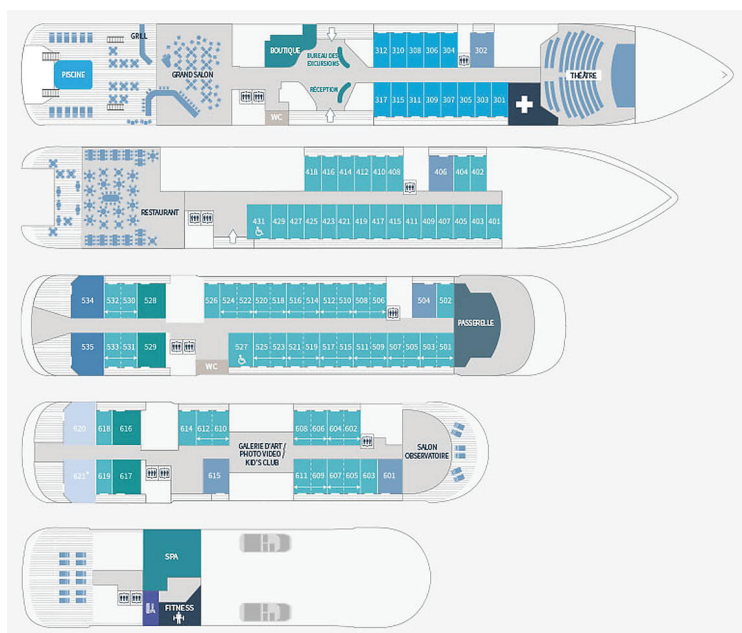
Wild Earth Travel

Small Ships, Big Adventures

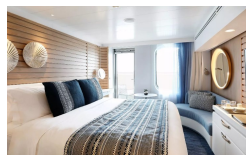
wildearth-travel.com

info@wildearth-travel.com

INSIDE YOUR SHIP



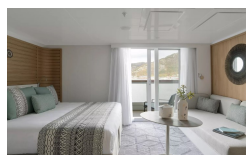
Deluxe Stateroom



Deluxe Suite Deck 3



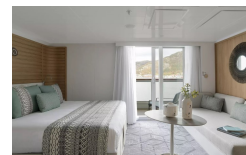
Deluxe Suite Deck 5



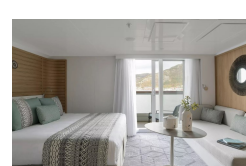
Grand Deluxe Suite



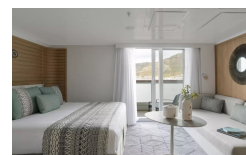
Deluxe Suite



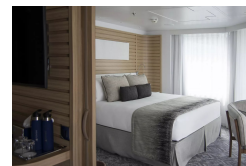
Deluxe Suite Deck 4



Deluxe Suite Deck 6



Grand Deluxe Suite Deck 5



Wild Earth Travel
Small Ships, Big Adventures

0800 945 3327 (within New Zealand) | +64 (0) 3 365 1355 | 1800 107 715 (within Australia)

info@wildearth-travel.com | wildearth-travel.com



Wild Earth Travel

Small Ships, Big Adventures

wildearth-travel.com

info@wildearth-travel.com

PRICING

19-Jan-2026 to 29-Jan-2026

Deluxe Stateroom	13250 AUD pp
Prestige Stateroom Deck 4	14740 AUD pp
Prestige Stateroom Deck 5	15480 AUD pp
Prestige Stateroom Deck 6	16360 AUD pp
Deluxe Suite Deck 4	22870 AUD pp
Deluxe Suite	22870 AUD pp
Deluxe Suite Deck 5	22870 AUD pp
Deluxe Suite Deck 6	22870 AUD pp
Prestige Suite Deck 5	31010 AUD pp
Prestige Suite Deck 6	32630 AUD pp
Privilege Suite Deck 6	34260 AUD pp
Privilege Suite	34260 AUD pp
Grand Deluxe Suite	37670 AUD pp
Grand Deluxe Suite Deck 6	37670 AUD pp
Owner's Suite	39590 AUD pp

Deluxe Stateroom	13250 AUD pp
Prestige Stateroom Deck 4	14740 AUD pp
Prestige Stateroom Deck 5	15480 AUD pp
Prestige Stateroom Deck 6	16360 AUD pp
Deluxe Suite Deck 5	22870 AUD pp
Deluxe Suite	22870 AUD pp
Deluxe Suite Deck 6	22870 AUD pp
Deluxe Suite Deck 4	22870 AUD pp
Prestige Suite Deck 5	31010 AUD pp
Prestige Suite Deck 6	32630 AUD pp
Privilege Suite Deck 6	34260 AUD pp
Privilege Suite	34260 AUD pp
Grand Deluxe Suite	37670 AUD pp
Grand Deluxe Suite Deck 6	37670 AUD pp
Owner's Suite	39590 AUD pp

05-Mar-2026 to 15-Mar-2026



Wild Earth Travel
Small Ships, Big Adventures

0800 945 3327 (within New Zealand) | +64 (0) 3 365 1355 | **1800 107 715** (within Australia)

info@wildearth-travel.com | wildearth-travel.com

Wild Earth Travel

Small Ships, Big Adventures

wildearth-travel.com

info@wildearth-travel.com

PRICING

15-Mar-2026 to 25-Mar-2026

Deluxe Stateroom	13250 AUD pp
Prestige Stateroom Deck 4	14740 AUD pp
Prestige Stateroom Deck 5	15480 AUD pp
Prestige Stateroom Deck 6	16360 AUD pp
Deluxe Suite Deck 4	22870 AUD pp
Deluxe Suite Deck 5	22870 AUD pp
Deluxe Suite	22870 AUD pp
Deluxe Suite Deck 6	22870 AUD pp
Prestige Suite Deck 5	31010 AUD pp
Prestige Suite Deck 6	32630 AUD pp
Privilege Suite	34260 AUD pp
Privilege Suite Deck 6	34260 AUD pp
Grand Deluxe Suite	37670 AUD pp
Grand Deluxe Suite Deck 6	37670 AUD pp
Owner's Suite	39590 AUD pp

21-Nov-2026 to 01-Dec-2026

Deluxe Stateroom	10420 AUD pp
Prestige Deck 4	11570 AUD pp
Prestige Deck 5	12140 AUD pp
Prestige Deck 6	12830 AUD pp
Deluxe Suite Deck 3	17860 AUD pp
Deluxe Suite Deck 4	17860 AUD pp
Deluxe Suite Deck 5	17860 AUD pp
Deluxe Suite Deck 6	17860 AUD pp
Prestige Deck 5 Suite	24150 AUD pp
Prestige Deck 6 Suite	25410 AUD pp
Privilege Suite Deck 6	26660 AUD pp
Privilege Suite Deck 5	26660 AUD pp
Grand Deluxe Suite Deck 6	29300 AUD pp
Grand Deluxe Suite Deck 5	29300 AUD pp

Wild Earth Travel

Small Ships, Big Adventures

0800 945 3327 (within New Zealand) | +64 (0) 3 365 1355 | **1800 107 715** (within Australia)

info@wildearth-travel.com | wildearth-travel.com

Wild Earth Travel

Small Ships, Big Adventures

wildearth-travel.com

info@wildearth-travel.com

PRICING

08-Dec-2026 to 18-Dec-2026

Deluxe Stateroom	10420 AUD pp
Prestige Deck 4	11570 AUD pp
Prestige Deck 5	12140 AUD pp
Prestige Deck 6	12830 AUD pp
Deluxe Suite Deck 4	17860 AUD pp
Deluxe Suite Deck 6	17860 AUD pp
Deluxe Suite Deck 5	17860 AUD pp
Deluxe Suite Deck 3	17860 AUD pp
Prestige Deck 5 Suite	24150 AUD pp
Prestige Deck 6 Suite	25410 AUD pp
Privilege Suite Deck 6	26660 AUD pp
Privilege Suite Deck 5	26660 AUD pp
Grand Deluxe Suite Deck 5	29300 AUD pp
Grand Deluxe Suite Deck 6	29300 AUD pp

Deluxe Stateroom	10420 AUD pp
Prestige Deck 4	11570 AUD pp
Prestige Deck 5	12140 AUD pp
Prestige Deck 6	12830 AUD pp
Deluxe Suite Deck 4	17860 AUD pp
Deluxe Suite Deck 5	17860 AUD pp
Deluxe Suite Deck 6	17860 AUD pp
Deluxe Suite Deck 3	17860 AUD pp
Prestige Deck 5 Suite	24150 AUD pp
Prestige Deck 6 Suite	25410 AUD pp
Privilege Suite Deck 5	26660 AUD pp
Privilege Suite Deck 6	26660 AUD pp
Grand Deluxe Suite Deck 6	29300 AUD pp
Grand Deluxe Suite Deck 5	29300 AUD pp

18-Dec-2026 to 28-Dec-2026

Wild Earth Travel

Small Ships, Big Adventures

0800 945 3327 (within New Zealand) | +64 (0) 3 365 1355 | **1800 107 715** (within Australia)

info@wildearth-travel.com | wildearth-travel.com

Wild Earth Travel

Small Ships, Big Adventures

wildearth-travel.com

info@wildearth-travel.com

PRICING

19-Dec-2026 to 29-Dec-2026

Deluxe Stateroom	10420 AUD pp
Prestige Deck 4	11570 AUD pp
Prestige Deck 5	12140 AUD pp
Prestige Deck 6	12830 AUD pp
Deluxe Suite Deck 5	17860 AUD pp
Deluxe Suite Deck 3	17860 AUD pp
Deluxe Suite Deck 4	17860 AUD pp
Deluxe Suite Deck 6	17860 AUD pp
Prestige Deck 5 Suite	24150 AUD pp
Prestige Deck 6 Suite	25410 AUD pp
Privilege Suite Deck 5	26660 AUD pp
Privilege Suite Deck 6	26660 AUD pp
Grand Deluxe Suite Deck 5	29300 AUD pp
Grand Deluxe Suite Deck 6	29300 AUD pp

04-Jan-2027 to 14-Jan-2027

Deluxe Stateroom	10420 AUD pp
Prestige Deck 4	11570 AUD pp
Prestige Deck 5	12140 AUD pp
Prestige Deck 6	12830 AUD pp
Deluxe Suite Deck 5	17860 AUD pp
Deluxe Suite Deck 6	17860 AUD pp
Deluxe Suite Deck 4	17860 AUD pp
Deluxe Suite Deck 3	17860 AUD pp
Prestige Deck 5 Suite	24150 AUD pp
Prestige Deck 6 Suite	25410 AUD pp
Privilege Suite Deck 6	26660 AUD pp
Privilege Suite Deck 5	26660 AUD pp
Grand Deluxe Suite Deck 6	29300 AUD pp
Grand Deluxe Suite Deck 5	29300 AUD pp

Wild Earth Travel

Small Ships, Big Adventures

0800 945 3327 (within New Zealand) | +64 (0) 3 365 1355 | **1800 107 715** (within Australia)

info@wildearth-travel.com | wildearth-travel.com

Wild Earth Travel

Small Ships, Big Adventures

wildearth-travel.com

info@wildearth-travel.com

PRICING

05-Jan-2027 to 15-Jan-2027

Deluxe Stateroom	10420 AUD pp
Prestige Deck 4	11570 AUD pp
Prestige Deck 5	12140 AUD pp
Prestige Deck 6	12830 AUD pp
Deluxe Suite Deck 5	17860 AUD pp
Deluxe Suite Deck 6	17860 AUD pp
Deluxe Suite Deck 4	17860 AUD pp
Deluxe Suite Deck 3	17860 AUD pp
Prestige Deck 5 Suite	24150 AUD pp
Prestige Deck 6 Suite	25410 AUD pp
Privilege Suite Deck 6	26660 AUD pp
Privilege Suite Deck 5	26660 AUD pp
Grand Deluxe Suite Deck 5	29300 AUD pp
Grand Deluxe Suite Deck 6	29300 AUD pp

Deluxe Stateroom	11060 AUD pp
Prestige Deck 4	12300 AUD pp
Prestige Deck 5	12900 AUD pp
Prestige Deck 6	13640 AUD pp
Deluxe Suite Deck 6	19000 AUD pp
Deluxe Suite Deck 3	19000 AUD pp
Deluxe Suite Deck 4	19000 AUD pp
Deluxe Suite Deck 5	19000 AUD pp
Prestige Deck 5 Suite	25710 AUD pp
Prestige Deck 6 Suite	27060 AUD pp
Privilege Suite Deck 5	28380 AUD pp
Privilege Suite Deck 6	28380 AUD pp
Grand Deluxe Suite Deck 6	31200 AUD pp
Grand Deluxe Suite Deck 5	31200 AUD pp

14-Jan-2027 to 24-Jan-2027



Wild Earth Travel

Small Ships, Big Adventures

wildearth-travel.com

info@wildearth-travel.com

PRICING

19-Mar-2027 to 29-Mar-2027

Deluxe Stateroom	11060 AUD pp
Prestige Deck 4	12300 AUD pp
Prestige Deck 5	12900 AUD pp
Prestige Deck 6	13640 AUD pp
Deluxe Suite Deck 6	19000 AUD pp
Deluxe Suite Deck 3	19000 AUD pp
Deluxe Suite Deck 5	19000 AUD pp
Deluxe Suite Deck 4	19000 AUD pp
Prestige Deck 5 Suite	25710 AUD pp
Prestige Deck 6 Suite	27060 AUD pp
Privilege Suite Deck 6	28380 AUD pp
Privilege Suite Deck 5	28380 AUD pp
Grand Deluxe Suite Deck 5	31200 AUD pp
Grand Deluxe Suite Deck 6	31200 AUD pp



Wild Earth Travel
Small Ships, Big Adventures

0800 945 3327 (within New Zealand) | +64 (0) 3 365 1355 | **1800 107 715** (within Australia)

info@wildearth-travel.com | **wildearth-travel.com**



Wild Earth Travel

Small Ships, Big Adventures



wildearth-travel.com

info@wildearth-travel.com

SPECIAL OFFERS

Online prices reflect the current brochure fare savings of up to 30%. Prices may change based on demand. Terms and conditions apply. This special offer is subject to availability. Please contact us for more details.



Wild Earth Travel

Small Ships, Big Adventures

0800 945 3327 (within New Zealand) | +64 (0) 3 365 1355 | **1800 107 715** (within Australia)

info@wildearth-travel.com | **wildearth-travel.com**