

Wild Earth Travel

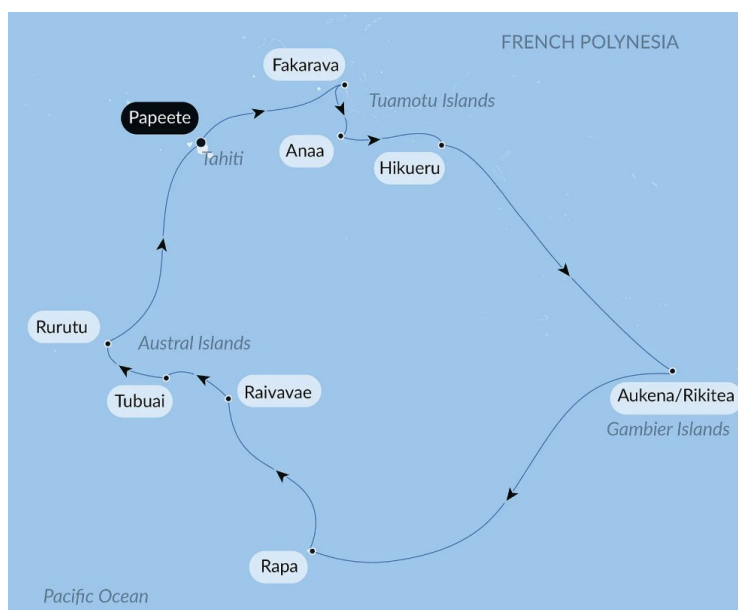
Small Ships, Big Adventures

wildearth-travel.com

info@wildearth-travel.com

SECRET POLYNESIA FROM THE SOCIETY TO THE AUSTRAL ISLANDS IN LUXURY

At the edges of the world, set off on an all-new adventure discovering Polynesia's best-kept secrets. Far off the beaten path, the shores of Tuamotu, the wild Gambier Islands and the Austral archipelago will unveil their sovereign nature and insular culture, which is very much still alive. Atolls just above the water, turquoise lagoons, fine sandy beaches and cliffs sculpted by the ocean serve as a decor for the special ports of call and the activities designed hand-in-hand with the local communities. Sail from island to island, encountering their unique traditions and fascinating ecosystems.



ITINERARY

Day 1 - Papeete, Tahiti Island

Capital of French Polynesia, the city of Papeete is on the north-west coast of the island of Tahiti. You'll find a relaxed atmosphere here, where urban buzz combines with the legendary laid-back Polynesian lifestyle. Culture is not lacking. You can enjoy sites narrating the history of the archipelago, including the colonial cathedral and the Maison de la reine Marau. The Vaipahi public gardens will win you over by their abundant plant-life. The large municipal market offers local specialities: fresh fruit, spices and all kinds of fish abound on their stalls.

Day 2 - Fakarava, Tuamotu Islands

Wild Earth Travel

Small Ships, Big Adventures

0800 945 3327 (within New Zealand) | +64 (0) 3 365 1355 | **1800 107 715** (within Australia)

info@wildearth-travel.com | **wildearth-travel.com**

Wild Earth Travel

Small Ships, Big Adventures

wildearth-travel.com

info@wildearth-travel.com

Listed as a UNESCO Biosphere Reserve, Fakarava's coral ellipsis is a narrow stretch of land sitting on a crystal-clear sea. Travellers here are surprised by the immensity of the lagoon, whose colours evoke an infinite palette. The atoll, renowned for its immaculate beaches and preserved nature, is home to rare bird species, plants and crustaceans.

Day 3 - Anaa, Tuamotu Islands

All the beauty of Polynesia is concentrated in Anaa Atoll, somewhere in the waters of the Pacific. Here, the most beautiful shades of blue and green are on display to create a heavenly setting. For the inhabitants of the Tuamotu archipelago, Anaa Atoll is intrinsically associated with the raids conducted by the so-called Parata warriors of old. In 1983, the island was completely destroyed by a cyclone that left behind only the Saint-Etienne de Tematahoa church, which remains standing elegantly on the edge of the beach to this day, against a backdrop of coconut trees. Featuring moments of relaxation and a dive into the history of Polynesia, the stop at Anaa promises to be unforgettable.

Day 4 - Hikueru

An isolated atoll in the Tuamotus, Hikueru's charm stems from the beauty of its landscapes and the authenticity of its inhabitants. Its crystal-clear lagoon, bordered by beaches of white sand and coral reefs, offers ideal conditions for scuba diving and snorkelling. On land, Polynesian songs, dances and handicrafts set the rhythm of daily life. Facing a calm horizon, explore the island at leisure, from a dugout canoe or by following the many paths.

Day 5 - At sea

During your journey at sea, make the most of the many services and activities on board. Treat yourself to a moment of relaxation in the spa or stay in shape in the fitness centre. Depending on the season, let yourself be tempted by the swimming pool or a spot of sunbathing. This journey without a port of call will also be an opportunity to enjoy the conferences or shows proposed on board, depending on the activities offered, or to do some shopping in the boutique or to meet the PONANT photographers in their dedicated space. As for lovers of the open sea, they will be able to visit the ship's upper deck to admire the spectacle of the waves and perhaps be lucky enough to observe marine

species. A truly enchanted interlude, combining comfort, rest and entertainment.

Day 6 - Aukena, Gambier Islands

Located 5 kilometres southeast of Mangareva, Aukena is today the 4th-largest of the Gambier Islands in French Polynesia, with a population of around thirty inhabitants. This port of call will be an opportunity for you to dive into the past, to the era when Aukena was discovered by the sailor James Wilson in 1797. There are several remnants of this missionary period, such as the watchtower serving as a landmark on the southwest of the island or the Church of St. Raphael, constructed in 1839. These buildings nestling in the forest lead to sumptuous white sand beaches and turquoise waters. Take the time to explore this island in the Gambier archipelago, and get a taste of French Polynesia's gentle way of life.

Day 7 - Rikitea, Gambier Islands

Discover Mangareva, which means "floating mountain" in Polynesian. Located in the Gambier Islands, surrounded by a magnificent coral reef and blessed with generous vegetation, this island, a cradle of Catholicism, has exceptional cultural heritage, with many vestiges of religious buildings dating from the 19th century. Nestling in the heart of this historic site with idyllic landscapes, do not miss the small village of Rikitea, where one of Polynesia's wonders, Saint Michael's Cathedral, stands proudly, entirely built from coral and timber.

Day 8 - At sea

During your journey at sea, make the most of the many services and activities on board. Treat yourself to a moment of relaxation in the spa or stay in shape in the fitness centre. Depending on the season, let yourself be tempted by the swimming pool or a spot of sunbathing. This journey without a port of call will also be an opportunity to enjoy the conferences or shows proposed on board, depending on the activities offered, or to do some shopping in the boutique or to meet the PONANT photographers in their dedicated space. As for lovers of the open sea, they will be able to visit the ship's upper deck to admire the spectacle of the waves and perhaps be lucky enough to observe marine species. A truly enchanted interlude, combining comfort, rest and entertainment.

Wild Earth Travel

Small Ships, Big Adventures

0800 945 3327 (within New Zealand) | +64 (0) 3 365 1355 | **1800 107 715** (within Australia)

info@wildearth-travel.com | wildearth-travel.com

Wild Earth Travel

Small Ships, Big Adventures

wildearth-travel.com

info@wildearth-travel.com

Days 9 - 10 - Rapa

Wild and unspoilt Rapa is one of the best kept secrets of the Austral Islands. From majestic mountains to trails winding through lush forests and crystal-clear lagoons, everything here invites contemplation and exploration. In this mysterious land, Polynesian culture vibrates intensely to the rhythm of songs, dances and local traditions, and both the encounters and hikes immerse you in a timeless interlude.

Day 11 - Raivavae, Austral Islands

Situated 730 km to the south-east of Tahiti, Raivavae is part of the Austral Islands. This volcanic island surrounded by a vast emerald-coloured lagoon has fewer than 1,000 inhabitants for four villages and two roads – one running around the island and the other through it. It is an island with an original culture and a still untouched environment, known for making sewn dugout canoes that are still used today. Often described as one of the most beautiful islands in the Pacific, Raivavae comprises 28 islets where nest a multitude of seabirds. You will have the possibility of exploring the island during an enchanting ride aboard one of the island's rare 4-wheel drive vehicles.

Day 12 - Tubuai, Austral Islands

Located in the Austral Islands in French Polynesia, 640 km south of Tahiti, Tubuai is a 45 km² volcanic island situated just south of the Tropic of Capricorn. Very well preserved, it is ringed by a 85 km² lagoon, one of the vastest in the Austral Islands. As it is rather shallow, it gives the ocean waters a distinctive shade of turquoise blue. Eight islets surround Tubuai and, with their beaches of fine soft sand, offer a landscape that is unique in Polynesia. You will love basking with your feet in the warm, clear water, or discovering an exceptional underwater world with a multitude of colourful tropical fish as you spend unforgettable moments snorkelling or diving.

Day 13 - Rurutu, Austral Islands

Far from the traditional tourist circuits, you'll discover the wildest and most surprising parts of French Polynesia. In the heart of the Austral archipelago, over 500 km south-west of Tahiti, your ship will make a port of call at Rurutu,

an elevated coral island of absolutely unique beauty. Carved with countless caves and surrounded by spectacular cliffs, this land of volcanic origin will reveal its mysterious and preserved landscapes to you. A real geological phenomenon, the troglodyte island also offers magnificent summits covered in lush vegetation that will delight hiking fans.

Day 14 - At sea

During your journey at sea, make the most of the many services and activities on board. Treat yourself to a moment of relaxation in the spa or stay in shape in the fitness centre. Depending on the season, let yourself be tempted by the swimming pool or a spot of sunbathing. This journey without a port of call will also be an opportunity to enjoy the conferences or shows proposed on board, depending on the activities offered, or to do some shopping in the boutique or to meet the PONANT photographers in their dedicated space. As for lovers of the open sea, they will be able to visit the ship's upper deck to admire the spectacle of the waves and perhaps be lucky enough to observe marine species. A truly enchanted interlude, combining comfort, rest and entertainment.

Day 15 - Papeete, Tahiti Island

Capital of French Polynesia, the city of Papeete is on the north-west coast of the island of Tahiti. You'll find a relaxed atmosphere here, where urban buzz combines with the legendary laid-back Polynesian lifestyle. Culture is not lacking. You can enjoy sites narrating the history of the archipelago, including the colonial cathedral and the Maison de la reine Marau. The Vaipahi public gardens will win you over by their abundant plant-life. The large municipal market offers local specialities: fresh fruit, spices and all kinds of fish abound on their stalls.

Please note:

Itineraries are subject to change.

Wild Earth Travel

Small Ships, Big Adventures

0800 945 3327 (within New Zealand) | +64 (0) 3 365 1355 | **1800 107 715** (within Australia)

info@wildearth-travel.com | **wildearth-travel.com**

Wild Earth Travel

Small Ships, Big Adventures



wildearth-travel.com

info@wildearth-travel.com

YOUR SHIP: LE JACQUES CARTIER

YOUR SHIP: Le Jacques Cartier

VESSEL TYPE: Luxury

LENGTH:

PASSENGER CAPACITY: 92 cabins

BUILT/REFURBISHED: 2018/2019

Featuring innovative and environmentally-friendly equipment, elegantly designed staterooms, spacious suites with large windows, and lounge areas that open onto the outside, this new limited-capacity yacht boasting just 92 staterooms and suites will offer you a truly unique cruising experience.

As the sixth ship in a new series that remains true to the Ponant spirit, Le Jacques Cartier will embody the unique atmosphere that is the cruise line's hallmark: a subtle blend of refinement, intimacy and comfort.

Aboard this ship that flies the French flag, you will experience the incomparable pleasure of an intimate cruise, with the possibility of exploring an ever-increasing range of destinations in an ethnic-chic ambiance with luxury service.

Experience a luxurious setting where the accent is on authenticity and passion for travel.

RESTAURANTS

As it is an essential part of French culture, gastronomy will naturally have pride of place aboard this new ship.

To the back of Deck 4, you will find a 260 m² panoramic restaurant which can accommodate all of our passengers in a single sitting. Designed differently to that on our other ships, this

dining area, which opens onto the outside, will have a buffet of salads, desserts and cheeses at your disposal. Our discreet and attentive crew will provide table service for hot meals.

In a relaxed atmosphere, an outdoor grill on Deck 3 will serve grilled meats with a variety of salads and desserts.

PUBLIC AREAS

Le Jacques Cartier has many common areas that are designed and equipped to meet all of your needs while preserving the intimacy of each passenger.

A 140 m² reception area includes:

A reception/concierge desk,

An excursions desk,

The ship's administrative services,

The sales office, manned by our Guest Relations Officer,

Our 50 m² boutique which sells clothing, jewellery, beauty products, postcards and various accessories,

Toilets accessible to passengers with reduced mobility.

A new hydraulic platform with adjustable height provides:

Easier boarding than on any other cruise ship,

Easier Zodiac embarkation and disembarkation for expeditions,

Easier access to the sea for swimming and practising various water sports such as kayaking or paddle-boarding.

A pool deck offering:

A pool with a panoramic view, equipped with a counter-current swimming system,

A pleasant solarium,

An outdoor bar and lounge with armchairs and sofas.

A 200 m² main lounge which can accommodate all of our passengers to share convivial moments and to host activities

Wild Earth Travel

Small Ships, Big Adventures

0800 945 3327 (within New Zealand) | +64 (0) 3 365 1355 | **1800 107 715** (within Australia)

info@wildearth-travel.com | wildearth-travel.com

Wild Earth Travel

Small Ships, Big Adventures



wildearth-travel.com

info@wildearth-travel.com

organised during the day or evening.

Lastly, a theatre that seats 188, equipped with:

The latest sound and lighting technology,

A LED wall as the stage backdrop, for the projection of high-resolution images and videos.



and videos.

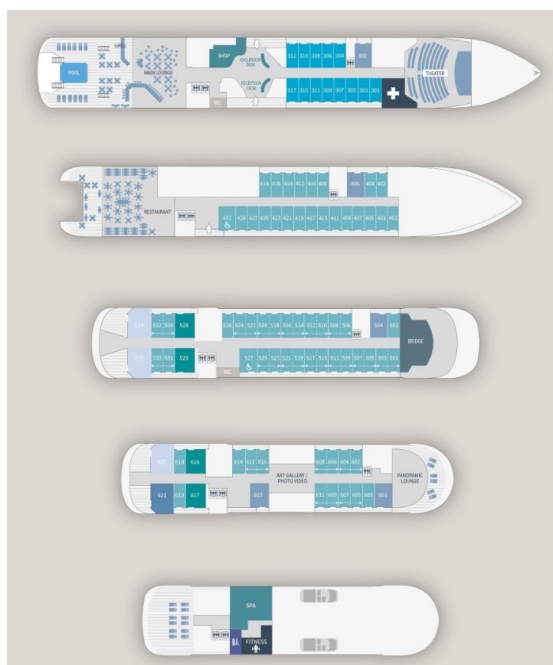
Wild Earth Travel

Small Ships, Big Adventures

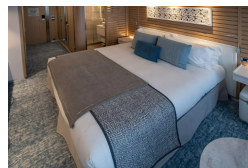
0800 945 3327 (within New Zealand) | +64 (0) 3 365 1355 | **1800 107 715** (within Australia)

info@wildearth-travel.com | **wildearth-travel.com**

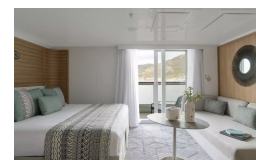
INSIDE YOUR SHIP



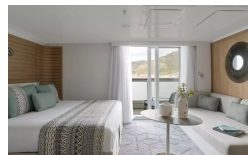
Deluxe Stateroom



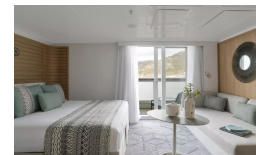
Deluxe Suite Deck 3



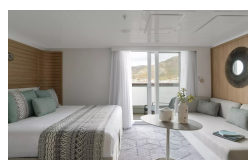
Deluxe Suite Deck 4



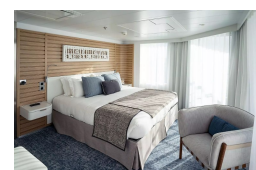
Deluxe Suite Deck 5



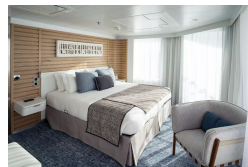
Deluxe Suite Deck 6



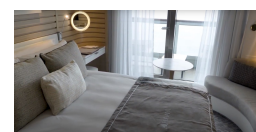
Grand Deluxe Suite Deck 5



Grand Deluxe Suite Deck 6



Prestige Deck 4



Wild Earth Travel

Small Ships, Big Adventures



wildearth-travel.com

info@wildearth-travel.com

PRICING

18-Oct-2026 to 01-Nov-2026

Deluxe Stateroom	15180 AUD pp
Prestige Deck 4	16850 AUD pp
Prestige Deck 5	17700 AUD pp
Prestige Deck 6	18700 AUD pp
Deluxe Suite Deck 4	26080 AUD pp
Deluxe Suite Deck 6	26080 AUD pp
Deluxe Suite Deck 3	26080 AUD pp
Deluxe Suite Deck 5	26080 AUD pp
Prestige Deck 5 Suite	35310 AUD pp
Prestige Deck 6 Suite	37140 AUD pp
Privilege Suite Deck 6	39000 AUD pp
Privilege Suite Deck 5	39000 AUD pp
Grand Deluxe Suite Deck 5	42840 AUD pp
Grand Deluxe Suite Deck 6	42840 AUD pp

Deluxe Stateroom	14970 AUD pp
Prestige Deck 4	16630 AUD pp
Prestige Deck 5	17460 AUD pp
Prestige Deck 6	18440 AUD pp
Deluxe Suite Deck 3	25700 AUD pp
Deluxe Suite Deck 6	25700 AUD pp
Deluxe Suite Deck 4	25700 AUD pp
Deluxe Suite Deck 5	25700 AUD pp
Prestige Deck 5 Suite	34760 AUD pp
Prestige Deck 6 Suite	36580 AUD pp
Privilege Suite Deck 6	38400 AUD pp
Privilege Suite Deck 5	38400 AUD pp
Grand Deluxe Suite Deck 6	42190 AUD pp
Grand Deluxe Suite Deck 5	42190 AUD pp

13-Dec-2026 to 27-Dec-2026