



Wild Earth Travel

Small Ships, Big Adventures

wildearth-travel.com

info@wildearth-travel.com

SCOTTISH ISLES & NORWEGIAN FJORDS LUXURY EXPEDITION CRUISE

Set sail on an unforgettable 8-day cruise aboard *Le Lap erouse*, between Celtic lands and Viking territory. Historical discoveries and stunning scenery will punctuate this trip taking you from Scotland to Norway.

At each port of call on your trip, every guest will be able to choose one included activity from the selection offered by Ponant. During this cruise, admire the incredible panorama composed of waterfalls and craggy peaks from aboard the Flam train, one of the steepest and most famous railways in the world. Visit the Neolithic treasures of the Orkney Islands from Kirkwall, or discover the mythical Highlands region and the historic village of Glencoe from Fort William. The diversity of options on offer promises intense and varied experiences. (Find the full list of excursions under the Itinerary tab.)

Departing from Bergen , famous for its Hanseatic wharf which still bears some traces of the city's rich Viking past, your first stop will be Flam. Nestled in the heart of the Aurlandsfjord between verdant mountains, this picturesque village with colourful houses is home to the famous Flam Railway.

Next, you will sail to Eidfjord. In the ancient glacial valley of the Hardanger Fjord , the steep mountains and roaring waterfalls, including the Voring Falls , among the highest in Europe, are an awesome display of nature.

You will then head for the Orkney archipelago and its windswept moorland landscape. *Le Laperouse* will sail towards Kirkwall,

capital of the Orkney Islands, where numerous seabirds, such as gannets and European shags, have taken up residence. Not far from there, the Neolithic Heart of Orkney, a UNESCO World Heritage Site, is a striking reminder of the ancient settlements that once inhabited this timeless place.

You will also discover the Isle of Skye, known for its rich Gaelic culture, its famous bridge, and its stunning scenery, Stornoway, the largest city in the Hebrides with a warm and friendly atmosphere.

You will then sail towards Fort William. This harbour town on the shores of Loch Linnhe is steeped in Scottish history and tradition, close to the beautiful and spectacular scenery of Glencoe and the Highlands.

Finally, you will reach Glasgow, Scotland's warm cultural capital with a rich artistic and architectural heritage, your disembarkation port.



Wild Earth Travel

Small Ships, Big Adventures

0800 945 3327 (within New Zealand) | +64 (0) 3 365 1355 | **1800 107 715** (within Australia)

info@wildearth-travel.com | **wildearth-travel.com**

Wild Earth Travel

Small Ships, Big Adventures

wildearth-travel.com

info@wildearth-travel.com



Nestled in the heart of the fjord country, less than 200 kilometres from Bergen, the picturesque village of Flåm - pronounced Flom - offers you an experience of authentic Norway. You can mosey around the brightly coloured streets and admire the majestic contours of the surrounding mountains. The town is also the departure point for the mythical train route Flåmsbana, 20 kilometres long, whose journey offers a superb view of the scenery, as sublime as it is pristine. This attraction makes Flåm one of the country's main tourist destinations.

Day 3 - Eidfjord

Eidfjord is nestled in one of the last branches of the beautiful Hardanger Fjord, 'the Norwegian orchard', which has been famous for its fruit production since medieval times. All the forces of nature seem to come together in this ancient glacial valley. Imposing and majestic mountains border the Hardangervidda National Park, the largest high-altitude plateau in Europe. The serene waters of the fjord and Lake Eidfjord are matched by the roar of the Voring Falls, one of Europe's highest waterfalls and Norway's main source of hydroelectric power.

Day 4 - At sea

During your journey at sea, make the most of the many services and activities on board. Treat yourself to a moment of relaxation in the spa or stay in shape in the fitness centre. Depending on the season, let yourself be tempted by the swimming pool or a spot of sunbathing. This journey without a port of call will also be an opportunity to enjoy the conferences or shows proposed on board, depending on the activities offered, or to do some shopping in the boutique or to meet the PONANT photographers in their dedicated space. As for lovers of the open sea, they will be able to visit the ship's upper deck to admire the spectacle of the waves and perhaps be lucky enough to observe marine species. A truly enchanted interlude, combining comfort, rest and entertainment.

ation port.

ITINERARY

Day 1 - Bergen

Located at the end of Byfjord, Bergen was the capital of Norway in the 12th and 13th Centuries and has preserved some very beautiful monuments from the time when it was home to royalty. Wandering through Bergen's streets means going back in time, in search of the hidden treasures that have been listed as World Heritage Sites by UNESCO. A veritable openair museum, Bergen is home to a thriving artistic community of painters, potters, jewellers. The Bergen cable car offers you a splendid panorama over the port and the surrounding fjords. Do not miss the visit to the old quarter with its narrow streets, a testimony of the power of the hanseatic League that controlled trade in Northern Europe at the end of the Middle Ages.

Day 2 - Flåm

Day 5 - Kirkwall, Scotland

Wild Earth Travel

Small Ships, Big Adventures

0800 945 3327 (within New Zealand) | +64 (0) 3 365 1355 | 1800 107 715 (within Australia)

info@wildearth-travel.com | wildearth-travel.com

Wild Earth Travel

Small Ships, Big Adventures

wildearth-travel.com

info@wildearth-travel.com

Capital of the Orkney archipelago, Kirkwall, which means "church bay", is an ideal stopover before continuing on to the Northern Isles. Sheltered in a wide bay, the lively town welcomes the visitor with its charming paved alleyways edged by old houses and craft shops. Tankerness House, the oldest homestead in the town, is a must-see landmark. But the true architectural treasure of the aptly named Kirkwall is none other than its remarkable red and gold stone cathedral. And because whisky is inseparable from Scotland's identity, stop at the Highland Park Distillery for a highly instructive visit.

Day 6 - Stornoway, Hebrides

Discover Lewis, the largest island of the Hebrides, considered to be the cradle of Gaelic culture. Here, the peat- and heather- covered valleys and lochs stretch on to infinity, and numerous bird colonies have taken up residence in the long, jagged coastlines where. Not far from Stornoway, the island's main town, built by the Vikings in the 9th century stands one of Scotland's most prominent prehistoric sites: The Standing Stones of Callanish. Dating back to more than 3,000 years B.C., these imposing stones placed in a cruciform pattern were laid out according to the moon and stars and their main purpose was to keep track of seasonal cycles, as this was essential for farmers at the time.

Day 7 - Fort william

A port town on the eastern shore of Loch Linnhe, Fort William is sometimes described as the "Outdoor Capital of the UK." Because it sits at the base of Ben Nevis, the highest peak in the British Isles, and is in close proximity to the dramatic landscape of Glencoe, it is a popular destination for hikers and rock climbers. For those looking for a less adventurous experience, the nearby Ben Nevis Distillery offers tours and tastings, and Old Fort and Old Inverlochy Castle are interesting historical sites.

Day 7 - Sailing on Loch Linnhe

Loch Linnhe is located in the Scottish Highlands, stretching between the Isle of Mull and Fort William. Sail in the heart of picturesque landscapes and admire the formations of the magnificent mountains and valleys surrounding the loch, including the famous Ben Nevis. The pure waters of Loch Linnhe are teeming with marine life; harbour seals may be found among its faithful inhabitants.

Day 8 - Glasgow, Scotland

In the heart of the Clyde Valley, the bustling city of Glasgow contrasts starkly with the wild beauty of the surrounding countryside. Scotland's biggest city overflows with landmarks from its extensive artistic heritage and outstanding architectural tradition. The city's chequerboard layout makes walking through the major pedestrian thoroughfares easy: go with the flow and let the lively street atmosphere take you past the many Victorian monuments. Don't miss the collections on display in the numerous museums and art galleries. The Kelvingrove Art Gallery and Museum is an outstanding example.

Please note:

Itineraries are subject to change.

Wild Earth Travel

Small Ships, Big Adventures

0800 945 3327 (within New Zealand) | +64 (0) 3 365 1355 | **1800 107 715** (within Australia)

info@wildearth-travel.com | **wildearth-travel.com**

Wild Earth Travel

Small Ships, Big Adventures



wildearth-travel.com

info@wildearth-travel.com

YOUR SHIP: LE LAPEROUSE

YOUR SHIP:	Le Laperouse
VESSEL TYPE:	Luxury
LENGTH:	127 metres
PASSENGER CAPACITY:	92 cabins
BUILT/REFURBISHED:	2017/2018

Featuring innovative and environmentally-friendly equipment, elegantly designed cabins, spacious suites with large windows, and lounge areas that open onto the outside, this new limited-capacity yacht boasting just 92 cabins and suites will offer you a truly unique cruising experience.

Aboard this ship that flies the French flag, you will experience the incomparable pleasure of an intimate cruise, with the possibility of exploring an ever-increasing range of destinations in an ethnic-chic ambiance with luxury service.

Experience a luxurious setting where the accent is on authenticity and passion for travel.

RESTAURANTS

As it is an essential part of French culture, gastronomy will naturally have pride of place aboard this new ship. Through its two restaurants, Le Laperouse will invite you on a journey to elegance and epicureanism.

In a relaxed atmosphere, a first dining area located on Deck 3 and able to seat 70 will serve grilled meats daily, along with a variety of salads and desserts.

To the back of Deck 4, you will find a 260 m² panoramic restaurant which can accommodate all of our passengers in a

single sitting. Designed differently to that on our other ships, this dining area, which opens onto the outside, will have a buffet of salads, desserts and cheeses at your disposal. Our discreet and attentive crew will provide table service for hot meals.

PUBLIC AREAS

Like Le Boreal and its sisterships, Le Laperouse has many common areas that are designed and equipped to meet all of your needs while preserving the intimacy of each passenger.

A 140 m² reception area includes: A reception/concierge desk, An excursions desk, The ship's administrative services, The sales office, manned by our Guest Relations Officer, Our 50 m² boutique which sells clothing, jewellery, beauty products, postcards and various accessories, Toilets accessible to passengers with reduced mobility.

A new hydraulic platform with adjustable height provides: Easier boarding than on any other cruise ship, Easier Zodiac embarkation and disembarkation for expeditions, Easier access to the sea for swimming and practising various water sports such as kayaking or paddle-boarding.

A pool deck offering: A pool with a panoramic view, equipped with a counter-current swimming system, A pleasant solarium, An outdoor bar and lounge with armchairs and sofas.

A 200 m² main lounge which can accommodate all of our passengers to share convivial moments and to host activities organised during the day or evening.

Lastly, a theatre that seats 188, equipped with: The latest sound and lighting technology, A LED wall as the stage backdrop, for the projection of high-resolution images and videos.

Wild Earth Travel

Small Ships, Big Adventures

0800 945 3327 (within New Zealand) | +64 (0) 3 365 1355 | **1800 107 715** (within Australia)

info@wildearth-travel.com | **wildearth-travel.com**



Wild Earth Travel

Small Ships, Big Adventures



wildearth-travel.com

info@wildearth-travel.com



and videos.



Wild Earth Travel

Small Ships, Big Adventures

0800 945 3327 (within New Zealand) | +64 (0) 3 365 1355 | **1800 107 715** (within Australia)

info@wildearth-travel.com | **wildearth-travel.com**

Wild Earth Travel

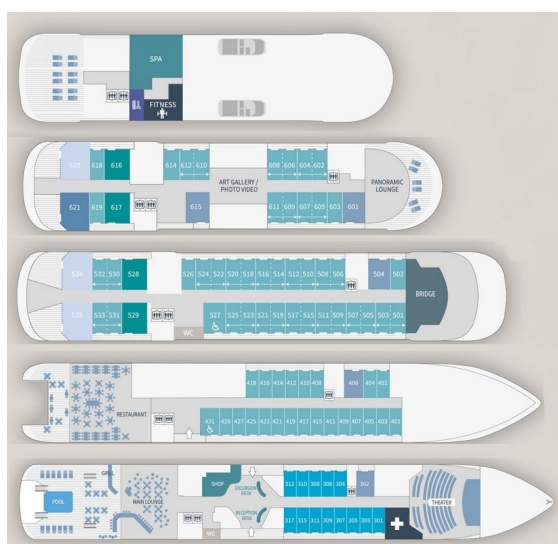
Small Ships, Big Adventures



wildearth-travel.com

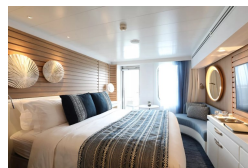
info@wildearth-travel.com

INSIDE YOUR SHIP

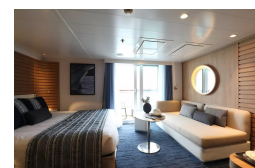


- Owner's Suite Deck 6
- Privilege Suites Deck 5-6
- Grand Deluxe Suites Deck 5-6
- Prestige Suites Deck 5-6
- Deluxe Suites Deck 5-6
- Prestige Cabins Deck 4-5-6
- Deluxe Cabins Deck 3

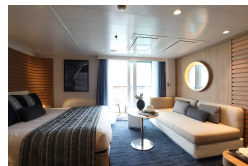
Deluxe Stateroom



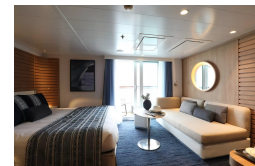
Deluxe Suite Deck 3



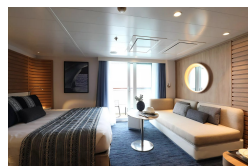
Deluxe Suite Deck 4



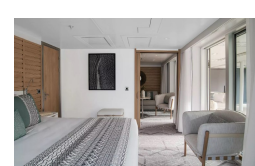
Deluxe Suite Deck 5



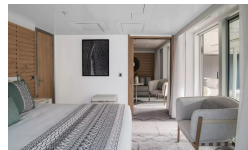
Deluxe Suite Deck 6



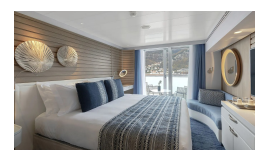
Grand Deluxe Suite Deck 5



Grand Deluxe Suite Deck 6



Prestige Deck 4



Wild Earth Travel
Small Ships, Big Adventures

0800 945 3327 (within New Zealand) | +64 (0) 3 365 1355 | 1800 107 715 (within Australia)

info@wildearth-travel.com | wildearth-travel.com

Wild Earth Travel

Small Ships, Big Adventures

wildearth-travel.com

info@wildearth-travel.com

PRICING

02-Jul-2026 to 09-Jul-2026

Deluxe Stateroom	7000 AUD pp
Prestige Deck 4	7760 AUD pp
Prestige Deck 5	8140 AUD pp
Prestige Deck 6	8600 AUD pp
Deluxe Suite Deck 5	11980 AUD pp
Deluxe Suite Deck 3	11980 AUD pp
Deluxe Suite Deck 4	11980 AUD pp
Deluxe Suite Deck 6	11980 AUD pp
Prestige Deck 5 Suite	16190 AUD pp
Prestige Deck 6 Suite	17030 AUD pp
Privilege Suite Deck 5	17870 AUD pp
Privilege Suite Deck 6	17870 AUD pp
Grand Deluxe Suite Deck 5	19630 AUD pp
Grand Deluxe Suite Deck 6	19630 AUD pp

Wild Earth Travel

Small Ships, Big Adventures

0800 945 3327 (within New Zealand) | +64 (0) 3 365 1355 | **1800 107 715** (within Australia)

info@wildearth-travel.com | **wildearth-travel.com**



Wild Earth Travel

Small Ships, Big Adventures



wildearth-travel.com

info@wildearth-travel.com

SPECIAL OFFERS

Online prices reflect the current brochure fare savings of up to 30%. Prices may change based on demand. Terms and conditions apply. This special offer is subject to availability. Please contact us for more details.



Wild Earth Travel

Small Ships, Big Adventures

0800 945 3327 (within New Zealand) | +64 (0) 3 365 1355 | **1800 107 715** (within Australia)

info@wildearth-travel.com | **wildearth-travel.com**