



Wild Earth Travel

Small Ships, Big Adventures

wildearth-travel.com

info@wildearth-travel.com

SCOTTISH ISLES AND NORWEGIAN FJORDS VOYAGE — WITH SMITHSONIAN JOURNEYS

In alliance with Smithsonian Journeys.

This cruise is part of a collection of PONANT voyages that are specially-tailored for English-speaking travelers who want to engage with the world. In addition to the usual elements of the PONANT experience, the listed price for these voyages includes transfers to and from the ship, talks and discussions aboard ship by world class experts, and a shore excursion or activity in each port of call that encourages guests to embrace the sights, sounds, tastes, and smells of the local environment and culture.

Join PONANT aboard Le Bellot for an 8-day cruise on an exceptional itinerary to discover the beauty of the Norwegian fjords and the rugged landscapes of the Scottish Isles.

Begin your voyage in Bergen, famous for its Hanseatic wharf, Bryggen, a UNESCO World Heritage site which still carries traces of the rich historic past of the city founded by the Vikings.

Your ship will first sail to Flam where you will board the Flam Railway to take a beautiful train journey high into the mountains of western Norway. View stunning rivers, waterfalls, and cultural landscapes around every corner.

Continue to Olden. From this small and charming village, located a few miles from Jostedalsgreen National Park, home to one of the last ice caps in Europe, you are able to admire the magnificent Briksdal Glacier.

Le Bellot then sails for Lerwick, the main port in the Shetland Islands. Nearby is the Jarlshof prehistoric and Norse settlement, where Neolithic people first settled more than 4,000 years ago - it is one of the most spectacular excavated sites in the British Isles.

Your ship sails next towards Kirkwall, capital of Orkney, where numerous seabirds, such as gannets and European shags, take residence. The Standing Stones of Stenness, built around 5,400 years ago, are a designated UNESCO World Heritage site.

From Portree, spend a day on the unparalleled Isle of Skye. Or, not to be missed on the mainland is Eilean Donan, one of the most recognizable castles in the world and an iconic symbol of Scotland.

End your voyage in Fort William, from where you are able to immerse yourself in local lore during a cruise of fabled Loch Ness or take a tour and enjoy a dram of scotch whisky at a local distillery.

You will disembark in Glasgow, Scotland's warm cultural capital with a rich artistic and architectural heritage.

Wild Earth Travel

Small Ships, Big Adventures

0800 945 3327 (within New Zealand) | +64 (0) 3 365 1355 | **1800 107 715** (within Australia)

info@wildearth-travel.com | **wildearth-travel.com**

Wild Earth Travel

Small Ships, Big Adventures

wildearth-travel.com

info@wildearth-travel.com



Nestled in the heart of the fjord country, less than 200 kilometres from Bergen, the picturesque village of Flam - pronounced Flom - offers you an experience of authentic Norway. You can mosey around the brightly coloured streets and admire the majestic contours of the surrounding mountains. The town is also the departure point for the mythical train route Flamsbana, 20 kilometres long, whose journey offers a superb view of the scenery, as sublime as it is pristine. This attraction makes Flam one of the country's main tourist destinations.

Day 3 OLDEN

With its two wooden churches, one red and the other white, plus its breathtaking view of the mouth of the river Oldeelva, Olden looks just like a picture post card. Located a few kilometres from the Jostedalsglacier park, home to one of the last glacier polar icecaps, this little village is a definite must for exploring the blue languages of the Briksdal or Kjennalen glaciers. Make sure you find some time to visit the Norwegian Glacier Museum. Absolutely amazing. Another gem is lake Lovatn and its turquoise waters inviting you to quiet contemplation.

Day 4 LERWICK, SHETLAND ISLANDS

The small and charming capital of the Shetland Islands, with its sea front of old houses and narrow streets, offering travellers its old districts and a warm port atmosphere. Geopark Shetland, a UNESCO World Heritage Site, is located to the north. Incredibly well-preserved archaeological sites and ruins prove that the islands' occupation dates back to the first Neolithic colonies. The Shetland Museum and Archives recounts the Shetlands' history of heritage and culture: Lerwick's abundant waters were even fished by the Dutch in the past.

Day 5 KIRKWALL, ORKNEY

Capital of the Orkney archipelago, Kirkwall, which means "church bay", is an ideal stopover before continuing on to the Northern Isles. Sheltered in a wide bay, the lively town welcomes the visitor with its charming paved alleyways edged by old houses and craft shops. Tankerness House, the oldest homestead in the town, is a must-see landmark. But the true architectural treasure of the aptly named Kirkwall is none other than its remarkable red and gold stone cathedral. And because whisky is inseparable from Scotland's identity, stop at the Highland Park Distillery for a highly instructive visit.

I heritage.

ITINERARY

Day 1 BERGEN

Located at the end of Byfjord, Bergen was the capital of Norway in the 12th and 13th Centuries and has preserved some very beautiful monuments from the time when it was home to royalty. Wandering through Bergen's streets means going back in time, in search of the hidden treasures that have been listed as World Heritage Sites by UNESCO. A veritable openair museum, Bergen is home to a thriving artistic community of painters, potters, jewellers. The Bergen cable car offers you a splendid panorama over the port and the surrounding fjords. Do not miss the visit to the old quarter with its narrow streets, a testimony of the power of the hanseatic League that controlled trade in Northern Europe at the end of the Middle Ages.

Day 2 FLAM

Wild Earth Travel

Small Ships, Big Adventures

0800 945 3327 (within New Zealand) | +64 (0) 3 365 1355 | 1800 107 715 (within Australia)

info@wildearth-travel.com | wildearth-travel.com

Wild Earth Travel

Small Ships, Big Adventures



wildearth-travel.com

info@wildearth-travel.com

Day 6 SAILING ALONG SKYE BRIDGE & KYLE OF LOCHALSH, SCOTLAND

Kelvingrove Art Gallery and Museum is an outstanding example.

Please Note:

Itineraries are subject to change.

The Isle of Skye is the largest in the Inner Hebrides archipelago. Nicknamed the island of the mist, its romantic and magical landscapes have inspired the greatest authors and filmmakers, such as the poet Walter Scott or Virginia Woolf. The almost deserted interior of the island and its coast are a concentration of the most emblematic beauty of the Scottish Highlands: rocky outcrops, basalt columns, hills and wide vales covered in peat bog and heather, lakes, waterfalls, fine sandy coves and cliffs. You may be lucky enough to see a sea eagle perched on their summits, watching the waves beneath which otters, sea lions, seals, dolphins and whales may be hiding. Kyle of Lochalsh ("Straits of the Alsh Inlet") is a small port town at the foot of the bridge connecting the mainland to the Isle of Skye. It is set amidst extraordinary natural beauty and serves as a gateway to the Scottish Highlands and to several castles that preserve the history and traditions of the clans who once ruled here. Eilean Donan Castle, on a tiny island overlooking the confluence of three lochs, is one of the most picturesque and most-filmed castles in Scotland. Armadale Castle and Gardens, historic residence of Clan Donald, is also within easy reach of the town.

Day 7 FORT WILLIAM

A port town on the eastern shore of Loch Linnhe, Fort William is sometimes described as the "Outdoor Capital of the UK." Because it sits at the base of Ben Nevis, the highest peak in the British Isles, and is in close proximity to the dramatic landscape of Glencoe, it is a popular destination for hikers and rock climbers. For those looking for a less adventurous experience, the nearby Ben Nevis Distillery offers tours and tastings, and Old Fort and Old Inverlochy Castle are interesting historical sites.

Day 8 GLASGOW, SCOTLAND

In the heart of the Clyde Valley, the bustling city of Glasgow contrasts starkly with the wild beauty of the surrounding countryside. Scotland's biggest city overflows with landmarks from its extensive artistic heritage and outstanding architectural tradition. The city's chequerboard layout makes walking through the major pedestrian thoroughfares easy: go with the flow and let the lively street atmosphere take you past the many Victorian monuments. Don't miss the collections on display in the numerous museums and art galleries. The

Wild Earth Travel

Small Ships, Big Adventures

0800 945 3327 (within New Zealand) | +64 (0) 3 365 1355 | **1800 107 715** (within Australia)

info@wildearth-travel.com | **wildearth-travel.com**

Wild Earth Travel

Small Ships, Big Adventures



wildearth-travel.com

info@wildearth-travel.com

YOUR SHIP: LE BELLOT

YOUR SHIP:	Le Bellot
VESSEL TYPE:	Luxury Expedition / Cruise Ship
LENGTH:	131 metres
PASSENGER CAPACITY:	184
BUILT/REFURBISHED:	2019-2020

Featuring innovative and environmentally-friendly equipment, elegantly designed staterooms, spacious suites with large windows, and lounge areas that open onto the outside, this new limited-capacity yacht boasting just 92 staterooms and suites will offer you a truly unique cruising experience.

As the first ship in a new series that remains true to the Ponant spirit, Le Bellot will embody the unique atmosphere that is the cruise line's hallmark: a subtle blend of refinement, intimacy and comfort.

Aboard this ship that flies the French flag, you will experience the incomparable pleasure of an intimate cruise, with the possibility of exploring an ever-increasing range of destinations in an ethnic-chic ambiance with luxury service.

Experience a luxurious setting where the accent is on authenticity and passion for travel.

RESTAURANTS

As it is an essential part of French culture, gastronomy will naturally have pride of place aboard this new ship.

To the back of Deck 4, you will find a 260 m² panoramic restaurant which can accommodate all of our passengers in a single sitting. Designed differently to that on our other ships, this

dining area, which opens onto the outside, will have a buffet of salads, desserts and cheeses at your disposal. Our discreet and attentive crew will provide table service for hot meals.

In a relaxed atmosphere, an outdoor grill on Deck 3 will serve grilled meats with a variety of salads and desserts.

PUBLIC AREAS

Le Bellot has many common areas that are designed and equipped to meet all of your needs while preserving the intimacy of each passenger.

A 140 m² reception area includes:

A reception/concierge desk,

An excursions desk,

The ship's administrative services,

The sales office, manned by our Guest Relations Officer,

Our 50 m² boutique which sells clothing, jewellery, beauty products, postcards and various accessories,

Toilets accessible to passengers with reduced mobility.

A new hydraulic platform with adjustable height provides:

Easier boarding than on any other cruise ship,

Easier Zodiac embarkation and disembarkation for expeditions,

Easier access to the sea for swimming and practising various water sports such as kayaking or paddle-boarding.

A pool deck offering:

A pool with a panoramic view, equipped with a counter-current swimming system,

A pleasant solarium,

An outdoor bar and lounge with armchairs and sofas.

A 200 m² main lounge which can accommodate all of our passengers to share convivial moments and to host activities

Wild Earth Travel

Small Ships, Big Adventures

0800 945 3327 (within New Zealand) | +64 (0) 3 365 1355 | **1800 107 715** (within Australia)

info@wildearth-travel.com | wildearth-travel.com

Wild Earth Travel

Small Ships, Big Adventures



wildearth-travel.com

info@wildearth-travel.com

organised during the day or evening.

Lastly, a theatre that seats 188, equipped with:

The latest sound and lighting technology,

A LED wall as the stage backdrop, for the projection of high-resolution images and videos.



and videos.

Wild Earth Travel

Small Ships, Big Adventures

0800 945 3327 (within New Zealand) | +64 (0) 3 365 1355 | **1800 107 715** (within Australia)

info@wildearth-travel.com | **wildearth-travel.com**

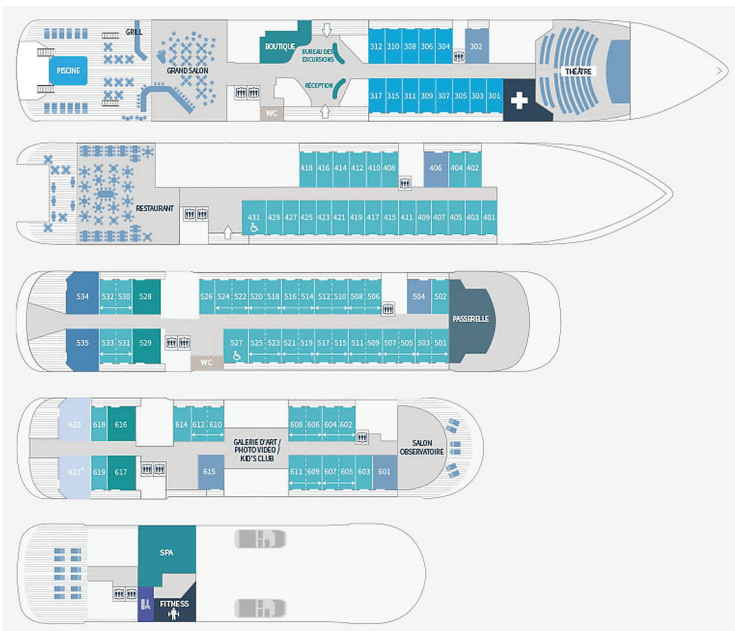
Wild Earth Travel

Small Ships, Big Adventures

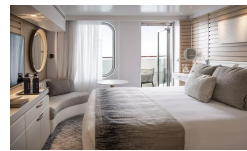
wildearth-travel.com

info@wildearth-travel.com

INSIDE YOUR SHIP



Deluxe Stateroom



Deluxe Suite



Deluxe Suite Deck 3



Deluxe Suite Deck 4



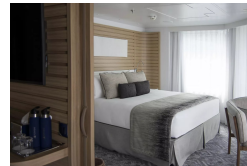
Deluxe Suite Deck 5



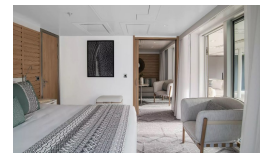
Deluxe Suite Deck 6



Grand Deluxe Suite



Grand Deluxe Suite Deck 5



Wild Earth Travel
Small Ships, Big Adventures

0800 945 3327 (within New Zealand) | +64 (0) 3 365 1355 | 1800 107 715 (within Australia)

info@wildearth-travel.com | wildearth-travel.com

Wild Earth Travel

Small Ships, Big Adventures

wildearth-travel.com

info@wildearth-travel.com

PRICING

30-May-2025 to 06-Jun-2025

Deluxe Stateroom	10680 AUD pp
Prestige Stateroom Deck 4	11810 AUD pp
Prestige Stateroom Deck 5	12380 AUD pp
Prestige Stateroom Deck 6	13050 AUD pp
Deluxe Suite Deck 6	18020 AUD pp
Deluxe Suite Deck 5	18020 AUD pp
Deluxe Suite	18020 AUD pp
Deluxe Suite Deck 4	18020 AUD pp
Prestige Suite Deck 5	24230 AUD pp
Prestige Suite Deck 6	25480 AUD pp
Privilege Suite	26720 AUD pp
Privilege Suite Deck 6	26720 AUD pp
Grand Deluxe Suite	29310 AUD pp
Grand Deluxe Suite Deck 6	29310 AUD pp
Owner's Suite	35520 AUD pp

Deluxe Stateroom	11250 AUD pp
Prestige Stateroom Deck 4	12440 AUD pp
Prestige Stateroom Deck 5	13050 AUD pp
Prestige Stateroom Deck 6	13760 AUD pp
Deluxe Suite Deck 5	19020 AUD pp
Deluxe Suite	19020 AUD pp
Deluxe Suite Deck 6	19020 AUD pp
Deluxe Suite Deck 4	19020 AUD pp
Prestige Suite Deck 5	25590 AUD pp
Prestige Suite Deck 6	26920 AUD pp
Privilege Suite	28230 AUD pp
Privilege Suite Deck 6	28230 AUD pp
Grand Deluxe Suite	30970 AUD pp
Grand Deluxe Suite Deck 6	30970 AUD pp
Owner's Suite	35520 AUD pp

21-Jun-2025 to 28-Jun-2025

Wild Earth Travel

Small Ships, Big Adventures

0800 945 3327 (within New Zealand) | +64 (0) 3 365 1355 | **1800 107 715** (within Australia)

info@wildearth-travel.com | wildearth-travel.com

Wild Earth Travel

Small Ships, Big Adventures

wildearth-travel.com

info@wildearth-travel.com

PRICING

04-Jul-2025 to 11-Jul-2025

Deluxe Stateroom	12422 AUD pp
Prestige Stateroom Deck 4	13752 AUD pp
Prestige Stateroom Deck 5	14422 AUD pp
Prestige Stateroom Deck 6	15212 AUD pp
Deluxe Suite Deck 6	21062 AUD pp
Deluxe Suite Deck 5	21062 AUD pp
Deluxe Suite	21062 AUD pp
Deluxe Suite Deck 4	21062 AUD pp
Prestige Suite Deck 5	28362 AUD pp
Prestige Suite Deck 6	29832 AUD pp
Privilege Suite Deck 6	31292 AUD pp
Privilege Suite	31292 AUD pp
Grand Deluxe Suite	34342 AUD pp
Grand Deluxe Suite Deck 6	34342 AUD pp
Owner's Suite	36072 AUD pp

Deluxe Stateroom	9870 AUD pp
Prestige Deck 4	10910 AUD pp
Prestige Deck 5	11420 AUD pp
Prestige Deck 6	12030 AUD pp
Deluxe Suite Deck 5	16550 AUD pp
Deluxe Suite Deck 6	16550 AUD pp
Deluxe Suite Deck 4	16550 AUD pp
Deluxe Suite Deck 3	16550 AUD pp
Prestige Deck 5 Suite	22190 AUD pp
Prestige Deck 6 Suite	23310 AUD pp
Privilege Suite Deck 5	24440 AUD pp
Privilege Suite Deck 6	24440 AUD pp
Grand Deluxe Suite Deck 6	26810 AUD pp
Grand Deluxe Suite Deck 5	26810 AUD pp

28-May-2026 to 04-Jun-2026

Wild Earth Travel

Small Ships, Big Adventures

0800 945 3327 (within New Zealand) | +64 (0) 3 365 1355 | **1800 107 715** (within Australia)

info@wildearth-travel.com | wildearth-travel.com

Wild Earth Travel

Small Ships, Big Adventures



wildearth-travel.com

info@wildearth-travel.com

PRICING

21-Jun-2026 to 28-Jun-2026

Deluxe Stateroom	9870 AUD pp
Prestige Deck 4	10910 AUD pp
Prestige Deck 5	11420 AUD pp
Prestige Deck 6	12030 AUD pp
Deluxe Suite Deck 6	16550 AUD pp
Deluxe Suite Deck 4	16550 AUD pp
Deluxe Suite Deck 5	16550 AUD pp
Deluxe Suite Deck 3	16550 AUD pp
Prestige Deck 5 Suite	22190 AUD pp
Prestige Deck 6 Suite	23310 AUD pp
Privilege Suite Deck 5	24440 AUD pp
Privilege Suite Deck 6	24440 AUD pp
Grand Deluxe Suite Deck 5	26810 AUD pp
Grand Deluxe Suite Deck 6	26810 AUD pp

ADDITIONAL CHARGES:

Port Taxes & Fees 520 AUD pp

Wild Earth Travel
Small Ships, Big Adventures

0800 945 3327 (within New Zealand) | +64 (0) 3 365 1355 | **1800 107 715** (within Australia)

info@wildearth-travel.com | **wildearth-travel.com**



Wild Earth Travel

Small Ships, Big Adventures



wildearth-travel.com

info@wildearth-travel.com

SPECIAL OFFERS

Online prices reflect the current brochure fare savings of up to 30%. Prices may change based on demand. Terms and conditions apply. This special offer is subject to availability. Please contact us for more details.

Wild Earth Travel

Small Ships, Big Adventures

0800 945 3327 (within New Zealand) | +64 (0) 3 365 1355 | **1800 107 715** (within Australia)

info@wildearth-travel.com | **wildearth-travel.com**