



Wild Earth Travel

Small Ships, Big Adventures

wildearth-travel.com

info@wildearth-travel.com

SCOTLAND, THE FAROE ISLANDS, & ICELAND: NORTH ATLANTIC SAGA - 11 DAY ADVENTURE CRUISE 2026

This journey offers an unforgettable adventure through the rugged beauty and rich history of Scotland, the Faroe Islands, and Iceland. Begin in Glasgow, exploring its vibrant culture before embarking from Greenock to traverse the North Atlantic. Discover the majestic Isle of Skye, with its breathtaking landscapes and abundant wildlife, and delve into the ancient heritage of the Hebrides at the Calanais Standing Stones and Garrannan Blackhouse Village on the Isle of Lewis. The voyage continues to the Faroe Islands, where dramatic cliffs, charming villages, and traditional Faroese culture await in Vagur, Torshavn, and Oyndarfjørður, each offering unique experiences and picturesque views.

Sailing onward, immerse yourself in the wild beauty of the western Faroe Islands and take in the serenity of the North Atlantic. The volcanic landscapes of Heimaey in Iceland's Westman Islands provide a stark and captivating contrast, home to diverse birdlife and a fascinating geological history. End the trip in Reykjavik, where the dynamic blend of Iceland's modern energy and deep-rooted Viking past makes for a fitting farewell. This voyage seamlessly blends nature, culture, and history, promising unforgettable moments at every turn.

Wild Earth Travel

Small Ships, Big Adventures

0800 945 3327 (within New Zealand) | +64 (0) 3 365 1355 | **1800 107 715** (within Australia)

info@wildearth-travel.com | **wildearth-travel.com**

Wild Earth Travel

Small Ships, Big Adventures



wildearth-travel.com

info@wildearth-travel.com



ITINERARY

Day 1: Glasgow/Greenock, Scotland

Begin Your Adventure

After a day of independent exploration in Glasgow, you'll transfer to the Greenock port by bus and embark for an evening departure.

Greenock has a rich maritime history and was a major shipbuilding and import centre.

Day 2: Isle of Skye

Enjoy Photography, Birdwatching, and Hiking

Whether you're a hiker, photographer, or birder, you will love a visit to Skye.

Cruise the southwestern shore of this large island keeping a keen eye out for species like common sandpiper, oystercatcher, gannets, and razorbills. Delight in the opportunity to witness these remarkable creatures in their natural environment and add unique sightings to your birdwatching list.

Immerse yourself in the beauty of Skye's mountainous landscapes and choose the level of activity that suits you best for a walk, hike, or trek among the awe-inspiring Cuillin Hills, one of Britain's finest mountainscapes.

Day 3: Stornoway, Lewis

Witness Modern and Ancient Scottish Culture

Visit Stornoway on the Isle of Lewis, a Gaelic stronghold and the capital of the largest of the Hebrides. Browse charming shops to purchase the island's famous tweed.

Meander through one of Britain's most important Stone Age sites, the Calanais Standing Stones, which are said to be giants who were punished by St. Kieran for refusing to convert to Christianity.

Experience the living history at Gearrannan Blackhouse Village, where you can learn about a typical crofting township of the last century. Explore the blackhouses and traditional activities, including the weaving of the famous Harris Tweed.

Discover Dun Carloway Broch, a uniquely Scottish site perched on a rocky mound. See this ancient structure, standing at an impressive nine metres tall.

Day 4: Vágur, Suðuroy Island, Faroe Islands

Immerse Yourself in Faroese Culture

Visit Vágur, where the warm hospitality of its 1,300 residents awaits you. Relish in the opportunity to witness Faroese chain dancing and share in stories of Vágur's captivating past.

Enjoy the abundance of birdlife that the island boasts.

Let your senses feast on the view of Suðuroy's towering west side. Admire majestic cliffs, stunning mountains, sea stacks, and the magnificent Beinisvørð mountain as it stands tall from afar.

Wild Earth Travel

Small Ships, Big Adventures

0800 945 3327 (within New Zealand) | +64 (0) 3 365 1355 | 1800 107 715 (within Australia)

info@wildearth-travel.com | wildearth-travel.com

Wild Earth Travel

Small Ships, Big Adventures



wildearth-travel.com

info@wildearth-travel.com

See for yourself why the island is famed for its dramatic cliffs towering over the North Atlantic and enjoy this paradise for birds, including European storm petrels and Atlantic puffins.

Day 5: Tórshavn

Visit Galleries, Shops, and Restaurants

Explore the splendid little city of Tórshavn ("Thor's harbour"), the Faroe Islands' capital and a former Viking trading centre.

Stroll through the enchanting streets of the old town, where you'll discover a treasure trove of galleries, charming shops, and restaurants.

Admire the buildings with their grass roofs and black timber façades, offering a glimpse into traditional Faroese architecture and culture.

Day 6: Oyndarfjørður

Get a Glimpse Into Charming Island Life

Nestled in a scenic fjord, the charming village of Oyndarfjørður is home to less than 200 people. Explore its picturesque streets, where traditional Faroese homes and the iconic wooden church reflect the island's rich history. Learn about local life and culture, and enjoy stunning views of the surrounding mountains, perfect for a leisurely walk or photo opportunity.

Day 7-8: Western Faroe Islands

Hike the Remote and Wild

Take in the drama of Vagar, one of the remote Western Islands, where soaring cliffs kiss the sea and emerald valleys cradle charming villages. This is a place of quiet wonder, where every path leads to a new story, and nature's raw beauty makes you humble.

Day 9: At Sea

Learn On Board

Deepen your understanding of the environment, cultures, and history of the region as we steam across the North Atlantic towards Iceland.

Enjoy workshops and presentations, watch a documentary, and get out on deck!

Day 10: Heimaey, Vestmannaeyjar (Westman Islands), Iceland

Marvel at Volcanic Landscapes

Vestmannaeyjar lies off the south coast of Iceland and comprises fourteen islands, numerous rocks, and skerries. Only the largest island, Heimaey, is inhabited.

Numerous species of seabirds, including the famous puffin, nest in the steep rock faces along the ocean cliffs. The volcanically active area has seen two major eruptions in recent times: the formation of the island of Surtsey in 1963, and the Eldfell eruption ten years later that destroyed much of Heimaey.

Day 11: Reykjavík, Iceland

Wave a Fond Farewell

Complete your journey in Reykjavik, Iceland's cosmopolitan capital that was established in the year 874 CE.

Food, culture, and nightlife abound, while the National Culture House preserves treasures like the Poetic Edda and the Norse Sagas in their original manuscripts.

Disembark in the morning and say your farewells in what is widely considered one of the cleanest, greenest cities in the world.

Please note:

Itineraries are subject to change.

Wild Earth Travel

Small Ships, Big Adventures

0800 945 3327 (within New Zealand) | +64 (0) 3 365 1355 | **1800 107 715** (within Australia)

info@wildearth-travel.com | wildearth-travel.com

Wild Earth Travel

Small Ships, Big Adventures

wildearth-travel.com

info@wildearth-travel.com

YOUR SHIP: EXPLORIS ONE

YOUR SHIP:	Exploris One
VESSEL TYPE:	Expedition Cruise
LENGTH:	108 metres / 354 feet
PASSENGER CAPACITY:	144
BUILT/REFURBISHED:	1989/2018/2023

Capacity for 144 passengers

Purpose-built for expedition travel

Design combines bold exploration with relaxed comfort and elegance

Well-suited for polar, temperate, and tropical environments

Life on Board

Food and Drink

Aboard the Exploris One, dining is an adventure! Top chefs craft dishes blending local flavours with international favourites, served in cozy open-seating spaces--indoors or al fresco. Start your day with hearty breakfasts and lunches to fuel your explorations. At dinner, savour globally inspired a la carte meals catering to seafood lovers, vegetarians, and everyone in between--don't forget the freshly made desserts! Dietary needs? Our team's got you covered with advance notice. With 24/7 beverages, from specialty coffee to fine wine, from beer to cocktails, every bite and sip celebrates your journey. Bon appetit!

Life on Board

Wake up aboard the Exploris One, where breathtaking ocean views from your cabin spark your inner poet. This intimate ship,

with space for 144 adventurers is designed to take you to the planet's most remote corners in style. Blending cozy comforts with epic exploration, it's perfect for you thrill-seekers that don't want to leave your barista behind. Learn from our expert expedition team, known for their deep knowledge and quirky charm. Spot seabirds from panoramic decks, enjoy inspiring talks, hands-on workshops, live music, or simply unwind in the ship's welcoming spaces.

From Ship to Shore

Heading ashore on the Exploris One is part of the adventure! With a fleet of trusty Zodiacs, you'll easily reach remote beaches, wildlife hotspots, and stunning coastlines. Designed for exploration, these versatile crafts get you right into the action. Our expert team ensures smooth, safe transfers, so you can focus on the thrill of discovery. Whether stepping onto untouched shores or cruising past playful seals, the journey is as exciting as the destination. On the Exploris One, every shore excursion is an adventure waiting to unfold!

Facilities

The Explorer's Table - Grand Restaurant

Enjoy exceptional dining in a spacious setting where gourmet meals and regional specialties are served with care and creativity.

The Outside Grill

Savour fresh-grilled favourites while taking in stunning views and the invigorating sea breeze on this open-air deck dining space.

Learning Lounge

Engage with experts and fellow travellers in this comfortable venue designed for insightful presentations and enriching talks.

Wild Earth Travel

Small Ships, Big Adventures

0800 945 3327 (within New Zealand) | +64 (0) 3 365 1355 | **1800 107 715** (within Australia)

info@wildearth-travel.com | wildearth-travel.com

Wild Earth Travel

Small Ships, Big Adventures

wildearth-travel.com

info@wildearth-travel.com

Main Lounge

Relax and socialize in this welcoming hub, perfect for unwinding, sharing stories, or enjoying evening entertainment.

Observation Lounge

Take in sweeping views and quiet contemplation in this serene space.

Fitness Centre

Stay active in the fully equipped fitness area, featuring modern equipment and ample space to maintain your workout routine while at sea.

Sauna

Recharge and unwind in the soothing warmth of our on-board sauna, perfect after a day of exploration.

Massage Room

Massages offered to provide relaxation and comfort, with appointments available throughout each journey.

Two Outdoor Jacuzzis

Soak in warm, bubbling waters while enjoying expansive views and refreshing ocean breezes.

Gift Shop

Browse a selection of unique items and essentials, perfect for souvenirs or travel needs.

Additional Facilities

Panoramic bridge

Bridge deck

Elevators to all decks

Steam Room

Complimentary launderette

Reception

Ready room

Medical centre



ical centre

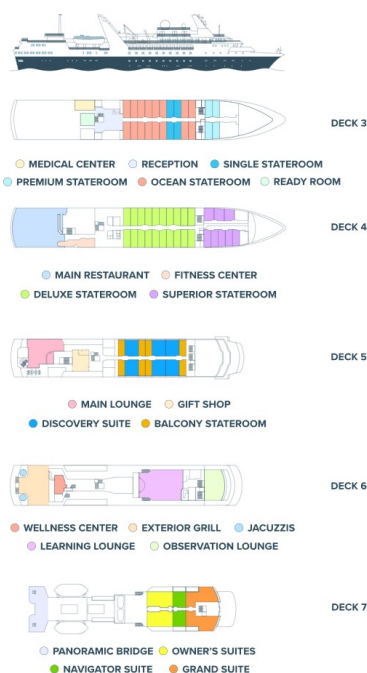
Wild Earth Travel

Small Ships, Big Adventures

0800 945 3327 (within New Zealand) | +64 (0) 3 365 1355 | **1800 107 715** (within Australia)

info@wildearth-travel.com | **wildearth-travel.com**

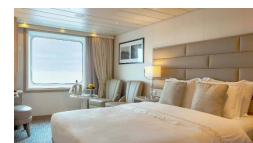
INSIDE YOUR SHIP



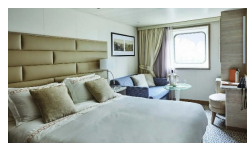
Cabin Category 1



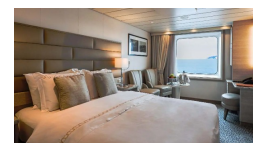
Cabin Category 2



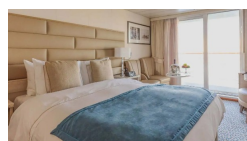
Cabin Category 3



Cabin Category 4



Cabin Category 5



Cabin Category 6



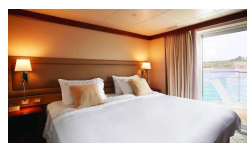
Cabin Category 7



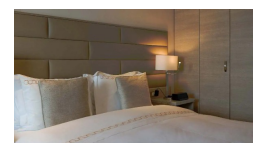
Cabin Category 8



Cabin Category 9



Cabin Category A



Wild Earth Travel

Small Ships, Big Adventures

wildearth-travel.com

info@wildearth-travel.com

PRICING

23-Jun-2026 to 03-Jul-2026

Cabin Category 1	10995 USD pp
Cabin Category 2	11495 USD pp
Cabin Category 3	11995 USD pp
Cabin Category 4	12895 USD pp
Cabin Category 5	13895 USD pp
Cabin Category 6	15395 USD pp
Cabin Category 7	15895 USD pp
Cabin Category A	16995 USD pp
Cabin Category 8	17395 USD pp
Cabin Category 9	19195 USD pp

Wild Earth Travel

Small Ships, Big Adventures

0800 945 3327 (within New Zealand) | +64 (0) 3 365 1355 | **1800 107 715** (within Australia)

info@wildearth-travel.com | **wildearth-travel.com**