

Wild Earth Travel

Small Ships, Big Adventures

wildearth-travel.com

info@wildearth-travel.com

POLYNESIAN BLISS: MARQUESAS, TUAMOTU AND SOCIETY ISLANDS

If heaven were a place on Earth, French Polynesia would probably be it. It has always fascinated and moved all those who have stepped foot on it. Its nature and culture have the power to enchant, and have been creating extraordinary landscapes and recounting ancestral legends for thousands of years. The Marquesas, steeped in mystery and a source of inspiration to artists like Jacques Brel or Paul Gauguin, will unveil their wild and mystical soul, between majestic cliffs and lush green valleys. Go back in time to encounter Tikis on the sacred Te I'ipona archaeological site on the island of Hiva Oa, or to see the "petroglyphs" on Nuku Hiva.



ITINERARY

Day 1 - Papeete, Tahiti Island

Capital of French Polynesia, the city of Papeete is on the north-west coast of the island of Tahiti. You'll find a relaxed atmosphere here, where urban buzz combines with the legendary laid-back Polynesian lifestyle. Culture is not lacking. You can enjoy sites narrating the history of the archipelago, including the colonial cathedral and the Maison de la reine Marau. The Vaipahi public gardens will win you over by their abundant plant-life. The large municipal market offers local specialities: fresh fruit, spices and all kinds of fish abound on their stalls.

Day 2 - Moorea Island

Wild Earth Travel

Small Ships, Big Adventures

0800 945 3327 (within New Zealand) | +64 (0) 3 365 1355 | **1800 107 715** (within Australia)

info@wildearth-travel.com | wildearth-travel.com

Wild Earth Travel

Small Ships, Big Adventures

wildearth-travel.com

info@wildearth-travel.com

A part of the Windward Island archipelago just to the west of Tahiti, famous Mo'orea will leave you with a series of unforgettable images and memories. Bask on its heavenly beaches, enjoy a dip in the turquoise waters of its lagoon, and soak up its luscious vegetation and the heady flowers that carpet the inland areas. Get the most out of this natural gem with a trip to the Mo'orea Belvedere. Exceptional views of Mount Rotui unfurl before your eyes, with the Opunohu Bay and its valley to the left, and the famous Cook's Bay, surrounded by notched, cathedral-style peaks, to the right.

Day 3 - Makatea, Tuamotu Islands

Located in the Tuamotu Archipelago, Makatea (from the Polynesian words for rock, "maka", and white, "tea") is a raised coral atoll belonging to the Palliser group of islands in French Polynesia. Tikehau, the nearest atoll, is 75 km south and Tahiti is some 200 km north-east. Its cliffs covered in lush vegetation overlooking the ocean will take you away for a suspended moment.

Day 4 - Rangiroa, Tuamotu Islands

A secluded atoll in the Tuamotu Archipelago, Rangiroa, meaning "vast sky" in Polynesian, is very aptly named. The lagoon of the largest atoll in Polynesia is reminiscent of the heavens, imprisoned by hundreds of islets formed by sand that veers from immaculate white to pink. But the beauty of Rangiroa, classed by Captain Cousteau as one of the most beautiful diving spots in the world, is most evident in its underwater life: you will have the occasion of admiring all the richness of the site on a snorkeling tour or on a glass-bottom boat tour. Rangiroa is also the high seat of Polynesian pearl culture.

Day 5 - At sea

During your journey at sea, make the most of the many services and activities on board. Treat yourself to a moment of relaxation in the spa or stay in shape in the fitness centre. Depending on the season, let yourself be tempted by the swimming pool or a spot of sunbathing. This journey without a port of call will also be an opportunity to enjoy the conferences or shows proposed on board, depending on the activities offered, or to do some shopping in the boutique or to meet the PONANT photographers in their dedicated space. As for lovers of the open sea, they will be able to visit the ship's upper deck to admire the spectacle of the waves and perhaps be lucky enough to observe marine

species. A truly enchanted interlude, combining comfort, rest and entertainment.

Day 6 - Hakahetau, Ua Pou Island

In the north-west of the island of Ua Pou, the third-largest of the Marquesas Islands, Hakahetau captivates with its wild splendour and the calmness that reigns over its legendary lands. With a luxuriant valley sheltering a tropical forest on one side and a paradisiacal bay of crystal-clear waters on the other side, the former capital of the island is a perfect spot for nature lovers. Here, like across the entire island, the inhabitants live primarily off fishing, farming and crafts: their wooden and stone sculptures are renowned.

Day 7 - Hatiheu, Nuka Hiva Island

Entering Hatiheu Bay, you will quickly make out the statue of the Virgin, which, standing more than 300 metres high, overlooks this beautiful little village. Located on the north of Nuku Hiva Island, this locality is dominated by impressive basalt pitons. In the past, the fear of tsunamis and attacks from other clans led the tribes to settle in the interior of the valleys. As a consequence, many archaeological sites remain preserved and make for interesting excursions. You will find many of the ceremonial plazas, called tohua, notably those of Kamuihei and Hikokua where you will be able to observe several reconstructed traditional houses.

Day 8 - Taiohae, Nuku Hiva Island

Taiohae Bay welcomes you in a sumptuous setting. Your ship will drop anchor a few kilometres from the black sandy beaches, nestled between majestic valleys. You will find yourself in the middle of the main village on the island of Nuku Hiva. You can follow the footpaths on foot or in an all-terrain vehicle. From the top of the hill of Mount Muake, a breathtaking panorama allows you to clearly identify the rocky islands that emerge on either side of the bay. Further on, the site of Piki Vehine shows its tikis, sacred statues used for religious practices. In addition, do not miss the Notre Dame des Marquises cathedral. Its distinguishing feature is that it was built using stone taken from the six Marquesa Islands.

Day 9 - Ua Huka

Wild Earth Travel

Small Ships, Big Adventures

0800 945 3327 (within New Zealand) | +64 (0) 3 365 1355 | **1800 107 715** (within Australia)

info@wildearth-travel.com | wildearth-travel.com

Wild Earth Travel

Small Ships, Big Adventures

wildearth-travel.com

info@wildearth-travel.com

Ua Huka, a hidden gem in the Marquesas, invites you to leave the world behind for a while. Its red-tinged cliffs overlook an endless ocean, while its tropical valleys are home to sacred relics and unspoiled wilderness. Accessible only by sea, this mysterious island invites you to discover its ancestral crafts and magnificent panoramas. Surrender to the soothing tranquillity of these landscapes, where each moment reveals the authenticity of a Polynesia that time forgot.

Day 10 - Puama'u, Hiva Oa

In the stunning Marquesas Islands, nature reigns supreme. The island of Hiva Oa and the town of Puamau are no exception to this rule. The archaeological site of Meae Lipona, one of the most beautiful places for admiring the famous "tiki" statues, ancient religious stone sculptures depicting men, is itself hidden at the heart of a dreamlike decor. The waters of the nearby stream babble as the only peak in the valley keeps watch from above. The stories and myths you hear will take on a whole new meaning here. Fall under the magical spell of Polynesia.

Day 10 - Hanaiapa, Hiva Oa

Hanaiapa, a peaceful jewel in the north of the island of Hiva Oa, captivates visitors with its authenticity and serenity. This village nestled between verdant mountains and turquoise waters reveals an idyllic setting where time seems to stand still. Its unique tropical vegetation invites contemplation, and its inhabitants warmly and readily share their culture and traditions.

Day 11 - Omoa, Fatu Hiva Island

Your ship will take you to Omoa, a peaceful fishing village far from all civilisation, nestling in a magnificent bay on the island of Fatu Hiva. In the valley, you will be able to spot some tohua, former sacred sites, as well as the many burial caves lost in the island's abundant tropical forest. During your port of call, you'll be able to discover the Maison Grelet, a museum that houses remarkable wooden sculptures and local works of art. Right in front of you, the village's artisans will demonstrate how they make tapa, a bark cloth obtained through the technique of beating layers of wood, and explain the manufacturing processes of umu hei, a bouquet garni made from a delicious

mix of fragrances.

Day 11 - Hanavave (Bay of Virgins), Fatu Hiva Island

Grandiose, striking and powerful, the Marquesas are more rugged than their Polynesian sisters. The archipelago's charm lies in its extraordinary wild beauty: waterfalls flowing down vertiginous peaks, jagged cliffs sinking into the indigo sea, and lush vegetation. On the island of Fatu Hiva, you'll discover the famous Hanavave Bay, considered to be one of the most beautiful in the world. Make the most of your free time to stroll among the houses and gardens of the village. Its inhabitants, specialised in the manufacture of tapa (bark cloth), will welcome you with ukulele music and traditional songs. You'll also have the pleasure of tasting the soft and juicy citrus fruits that grow on the island.

Day 12 - Hapatoni, Tahuata Island

Located on Tahuata, the smallest of the inhabited Marquesas Islands, the village of Hapatoni will open its doors to you. A road built in old stones will lead you from the seashore to the village cathedral. You will also find a craft centre presenting various sculptures and engravings in bone or wood. Marquesan art is, in fact, recognised all over French Polynesia. Further on, vegetation takes over, inviting you to walk among its beautiful green valleys. Here, the population will give you a proper welcome, with traditional singing and dancing. A moment of conviviality you'll remember!

Day 13 - At sea

During your journey at sea, make the most of the many services and activities on board. Treat yourself to a moment of relaxation in the spa or stay in shape in the fitness centre. Depending on the season, let yourself be tempted by the swimming pool or a spot of sunbathing. This journey without a port of call will also be an opportunity to enjoy the conferences or shows proposed on board, depending on the activities offered, or to do some shopping in the boutique or to meet the PONANT photographers in their dedicated space. As for lovers of the open sea, they will be able to visit the ship's upper deck to admire the spectacle of the waves and perhaps be lucky enough to observe marine species. A truly enchanted interlude, combining comfort, rest and entertainment.

Wild Earth Travel

Small Ships, Big Adventures

0800 945 3327 (within New Zealand) | +64 (0) 3 365 1355 | **1800 107 715** (within Australia)

info@wildearth-travel.com | wildearth-travel.com

Wild Earth Travel

Small Ships, Big Adventures



wildearth-travel.com

info@wildearth-travel.com

Day 14 - Fakarava, Tuamotu Islands

Listed as a UNESCO Biosphere Reserve, Fakarava's coral ellipsis is a narrow stretch of land sitting on a crystal-clear sea. Travellers here are surprised by the immensity of the lagoon, whose colours evoke an infinite palette. The atoll, renowned for its immaculate beaches and preserved nature, is home to rare bird species, plants and crustaceans.

Day 15 - Papeete, Tahiti Island

Capital of French Polynesia, the city of Papeete is on the north-west coast of the island of Tahiti. You'll find a relaxed atmosphere here, where urban buzz combines with the legendary laid-back Polynesian lifestyle. Culture is not lacking. You can enjoy sites narrating the history of the archipelago, including the colonial cathedral and the Maison de la reine Marau. The Vaipahi public gardens will win you over by their abundant plant-life. The large municipal market offers local specialities: fresh fruit, spices and all kinds of fish abound on their stalls.

Please note:

Itineraries are subject to change.

Wild Earth Travel

Small Ships, Big Adventures

0800 945 3327 (within New Zealand) | +64 (0) 3 365 1355 | **1800 107 715** (within Australia)

info@wildearth-travel.com | **wildearth-travel.com**

Wild Earth Travel

Small Ships, Big Adventures



wildearth-travel.com

info@wildearth-travel.com

YOUR SHIP: LE JACQUES CARTIER

YOUR SHIP: Le Jacques Cartier

VESSEL TYPE: Luxury

LENGTH:

PASSENGER CAPACITY: 92 cabins

BUILT/REFURBISHED: 2018/2019

Featuring innovative and environmentally-friendly equipment, elegantly designed staterooms, spacious suites with large windows, and lounge areas that open onto the outside, this new limited-capacity yacht boasting just 92 staterooms and suites will offer you a truly unique cruising experience.

As the sixth ship in a new series that remains true to the Ponant spirit, Le Jacques Cartier will embody the unique atmosphere that is the cruise line's hallmark: a subtle blend of refinement, intimacy and comfort.

Aboard this ship that flies the French flag, you will experience the incomparable pleasure of an intimate cruise, with the possibility of exploring an ever-increasing range of destinations in an ethnic-chic ambiance with luxury service.

Experience a luxurious setting where the accent is on authenticity and passion for travel.

RESTAURANTS

As it is an essential part of French culture, gastronomy will naturally have pride of place aboard this new ship.

To the back of Deck 4, you will find a 260 m² panoramic restaurant which can accommodate all of our passengers in a single sitting. Designed differently to that on our other ships, this

dining area, which opens onto the outside, will have a buffet of salads, desserts and cheeses at your disposal. Our discreet and attentive crew will provide table service for hot meals.

In a relaxed atmosphere, an outdoor grill on Deck 3 will serve grilled meats with a variety of salads and desserts.

PUBLIC AREAS

Le Jacques Cartier has many common areas that are designed and equipped to meet all of your needs while preserving the intimacy of each passenger.

A 140 m² reception area includes:

A reception/concierge desk,

An excursions desk,

The ship's administrative services,

The sales office, manned by our Guest Relations Officer,

Our 50 m² boutique which sells clothing, jewellery, beauty products, postcards and various accessories,

Toilets accessible to passengers with reduced mobility.

A new hydraulic platform with adjustable height provides:

Easier boarding than on any other cruise ship,

Easier Zodiac embarkation and disembarkation for expeditions,

Easier access to the sea for swimming and practising various water sports such as kayaking or paddle-boarding.

A pool deck offering:

A pool with a panoramic view, equipped with a counter-current swimming system,

A pleasant solarium,

An outdoor bar and lounge with armchairs and sofas.

A 200 m² main lounge which can accommodate all of our passengers to share convivial moments and to host activities

Wild Earth Travel

Small Ships, Big Adventures

0800 945 3327 (within New Zealand) | +64 (0) 3 365 1355 | **1800 107 715** (within Australia)

info@wildearth-travel.com | wildearth-travel.com



Wild Earth Travel

Small Ships, Big Adventures



wildearth-travel.com

info@wildearth-travel.com

organised during the day or evening.

Lastly, a theatre that seats 188, equipped with:

The latest sound and lighting technology,

A LED wall as the stage backdrop, for the projection of high-resolution images and videos.



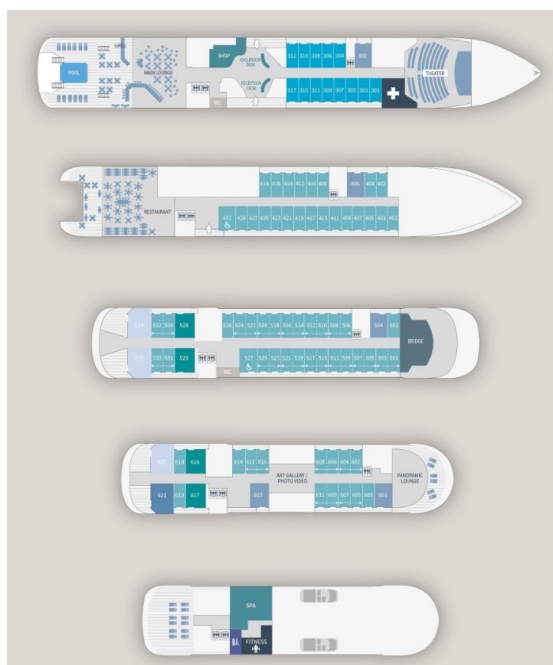
and videos.

Wild Earth Travel
Small Ships, Big Adventures

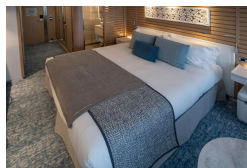
0800 945 3327 (within New Zealand) | +64 (0) 3 365 1355 | **1800 107 715** (within Australia)

info@wildearth-travel.com | **wildearth-travel.com**

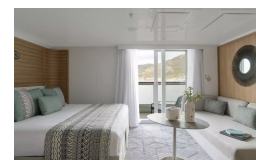
INSIDE YOUR SHIP



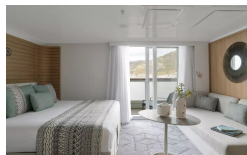
Deluxe Stateroom



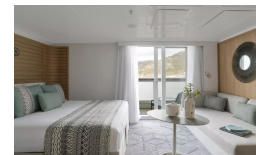
Deluxe Suite Deck 3



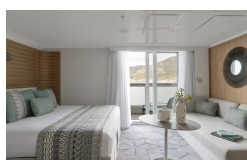
Deluxe Suite Deck 4



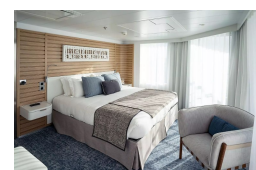
Deluxe Suite Deck 5



Deluxe Suite Deck 6



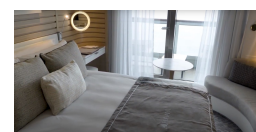
Grand Deluxe Suite Deck 5



Grand Deluxe Suite Deck 6



Prestige Deck 4



Wild Earth Travel

Small Ships, Big Adventures



wildearth-travel.com

info@wildearth-travel.com

PRICING

04-Oct-2026 to 18-Oct-2026

Deluxe Stateroom	16840 AUD pp
Prestige Deck 4	18710 AUD pp
Prestige Deck 5	19660 AUD pp
Prestige Deck 6	20780 AUD pp
Deluxe Suite Deck 4	29020 AUD pp
Deluxe Suite Deck 5	29020 AUD pp
Deluxe Suite Deck 6	29020 AUD pp
Deluxe Suite Deck 3	29020 AUD pp
Prestige Deck 5 Suite	39340 AUD pp
Prestige Deck 6 Suite	41390 AUD pp
Privilege Suite Deck 6	43460 AUD pp
Privilege Suite Deck 5	43460 AUD pp
Grand Deluxe Suite Deck 6	47760 AUD pp
Grand Deluxe Suite Deck 5	47760 AUD pp

Deluxe Stateroom	16010 AUD pp
Prestige Deck 4	17780 AUD pp
Prestige Deck 5	18680 AUD pp
Prestige Deck 6	19740 AUD pp
Deluxe Suite Deck 4	27550 AUD pp
Deluxe Suite Deck 3	27550 AUD pp
Deluxe Suite Deck 5	27550 AUD pp
Deluxe Suite Deck 6	27550 AUD pp
Prestige Deck 5 Suite	37320 AUD pp
Prestige Deck 6 Suite	39270 AUD pp
Privilege Suite Deck 6	41230 AUD pp
Privilege Suite Deck 5	41230 AUD pp
Grand Deluxe Suite Deck 5	45300 AUD pp
Grand Deluxe Suite Deck 6	45300 AUD pp

01-Nov-2026 to 15-Nov-2026

Wild Earth Travel

Small Ships, Big Adventures



wildearth-travel.com

info@wildearth-travel.com

PRICING

29-Nov-2026 to 13-Dec-2026

Deluxe Stateroom	14350 AUD pp
Prestige Deck 4	15920 AUD pp
Prestige Deck 5	16720 AUD pp
Prestige Deck 6	17660 AUD pp
Deluxe Suite Deck 4	24600 AUD pp
Deluxe Suite Deck 3	24600 AUD pp
Deluxe Suite Deck 5	24600 AUD pp
Deluxe Suite Deck 6	24600 AUD pp
Prestige Deck 5 Suite	33290 AUD pp
Prestige Deck 6 Suite	35020 AUD pp
Privilege Suite Deck 6	36760 AUD pp
Privilege Suite Deck 5	36760 AUD pp
Grand Deluxe Suite Deck 5	40380 AUD pp
Grand Deluxe Suite Deck 6	40380 AUD pp

Deluxe Stateroom	15500 AUD pp
Prestige Deck 4	17200 AUD pp
Prestige Deck 5	18050 AUD pp
Prestige Deck 6	19070 AUD pp
Deluxe Suite Deck 3	24840 AUD pp
Deluxe Suite Deck 4	24840 AUD pp
Deluxe Suite Deck 5	24840 AUD pp
Deluxe Suite Deck 6	24840 AUD pp
Prestige Deck 5 Suite	29940 AUD pp
Prestige Deck 6 Suite	31310 AUD pp
Privilege Suite Deck 5	32330 AUD pp
Privilege Suite Deck 6	32330 AUD pp
Grand Deluxe Suite Deck 6	33350 AUD pp
Grand Deluxe Suite Deck 5	33350 AUD pp

27-Dec-2026 to 10-Jan-2027

Wild Earth Travel

Small Ships, Big Adventures

wildearth-travel.com

info@wildearth-travel.com

PRICING

10-Jan-2027 to 24-Jan-2027

Deluxe Stateroom	14100 AUD pp
Prestige Deck 4	15650 AUD pp
Prestige Deck 5	16430 AUD pp
Prestige Deck 6	17360 AUD pp
Deluxe Suite Deck 6	24160 AUD pp
Deluxe Suite Deck 4	24160 AUD pp
Deluxe Suite Deck 5	24160 AUD pp
Deluxe Suite Deck 3	24160 AUD pp
Prestige Deck 5 Suite	32660 AUD pp
Prestige Deck 6 Suite	34360 AUD pp
Privilege Suite Deck 5	36060 AUD pp
Privilege Suite Deck 6	36060 AUD pp
Grand Deluxe Suite Deck 6	39620 AUD pp
Grand Deluxe Suite Deck 5	39620 AUD pp

Deluxe Stateroom	14970 AUD pp
Prestige Deck 4	16630 AUD pp
Prestige Deck 5	17460 AUD pp
Prestige Deck 6	18440 AUD pp
Deluxe Suite Deck 3	25700 AUD pp
Deluxe Suite Deck 4	25700 AUD pp
Deluxe Suite Deck 5	25700 AUD pp
Deluxe Suite Deck 6	25700 AUD pp
Prestige Deck 5 Suite	34760 AUD pp
Prestige Deck 6 Suite	36580 AUD pp
Privilege Suite Deck 5	38400 AUD pp
Privilege Suite Deck 6	38400 AUD pp
Grand Deluxe Suite Deck 6	42190 AUD pp
Grand Deluxe Suite Deck 5	42190 AUD pp

24-Jan-2027 to 07-Feb-2027