



POLAR ODYSSEY BETWEEN NORTHEAST GREENLAND & SPITSBERGEN LUXURY CRUISE

PONANT invites you to experience the exceptional by discovering the east coast of Greenland and following the ice to the majestic lands of Spitsbergen during a 17-day cruise. In the footsteps of the great explorers and Norwegian trappers, plunge into the history of these remote territories, during a period of extreme conditions when the ice still envelops the wild and deserted landscape.

Thanks to *Le Commandant Charcot*, the first hybrid electric polar exploration ship, you will brave the elements, to reach Greenland and the Scoresby Sound region. In the heart of this hostile yet sublime world of ice, you will navigate in the wake of Jean-Baptiste Charcot, who was deeply connected to the Inuit land, where vestiges of his passage remain. The sumptuous decor is made up of snow-topped peaks and majestic fjords, icebergs of poetic shapes, and ice as far as the eye can see.

You will then set sail towards the Northeast Greenland National Park, the largest national park in the world and a UNESCO Biosphere Reserve: here, the trappers' cabins are lost in the immensity of the magically coloured alpine landscapes and the impressive glaciers. You will go where few have had the chance, to the sites of the Arctic tales written by Jörn Riel. This immense territory, which represents almost 45% of the total area of Greenland, is home to the King Oscar Fjord and Kaiser Franz Joseph Fjord, where the bare ochre cliffs disappear into the boreal sea. Polar bears and musk oxen live in these distant lands and you may be lucky enough to spot them on the

horizon.

Follow the ice and cross the Greenland Sea to reach the Nordvest-Spitsbergen National Park much further north. Former whalers, once settled on the sites that are now home to the graves of many sailors, have made way for various species of cetaceans and walrus, which have recolonised their lands.



their lands.

ITINERARY

Day 1 - Reykjavík



Iceland's capital stretches along the edge of a vast bay in the west of the country. Perlan, the "Pearl of Reykjavik", a museum located on 'Oskjuhlíð hill, offers a panoramic view of the lush, green landscapes. A little further, one can easily spot the signpost showing the way to the evangelical Hallgrímskirkja church, and to the historical centre where one can stroll along the Skólavörðustígur and the Laugavegur, two lively streets with charming small shops. For some relaxation just outside of the city, visitors have the opportunity to visit the Reykjanes peninsula and its famous thermal lagoons of the Blue Lagoon.

Day 2 - At sea aboard Le Commandant Charcot

Spend exceptional moments sailing aboard Le Commandant Charcot, the world's first luxury polar exploration vessel and the first PC2-class polar cruise ship capable of sailing into the very heart of the ice, on seas and oceans which the frozen conditions render inaccessible to ordinary ships. Le Commandant Charcot is fitted with oceanographic and scientific equipment selected by a committee of experts. Take advantage of the on-board lectures and opportunities for discussion with these specialists to learn more about the poles. Participate in furthering scientific research with PONANT and let us discover together what these fascinating destinations have yet to reveal to us.

Day 3 - Exploration of Ittoqqortoormiit

On the East coast of Greenland, in the Ittoqqortoormiit region that is covered with snow and ice for nine months of the year, you will have the rare opportunity of immersing yourself in the heart of an isolated territory and exploring the beauty of its infinite polar whiteness. The high alpine mountains punctuate the sky and gradually reveal their dark rock edges beneath a coat of snow. Located at the entrance to the longest system of fjords in the world, sits the village of Ittoqqortoormiit, one of the northernmost inhabited places on the East coast. Its name means 'great house' in Greenlandic and it is home to the last hunters of the polar region, whose ancestral way of life you will encounter. As soon as the thickness of the ice floe allows it, the hunters set out on the trail of walrus, seals, narwhals, musk oxen and polar bears, travelling by traditional dog sleds. On these expanses of immaculate snow, the silence is broken only by the sounds of the dogs, the grating of a sled coming back from

a run or of footsteps on the ice. You will discover Inuit traditions through privileged and festive moments on the ice floe and in the village.

Day 4 - Bjorneoer

Day 5 - Ittoqqortoormiit Region

On the East coast of Greenland, in the Ittoqqortoormiit region, you will have the rare opportunity of immersing yourself in the heart of isolated scenery and exploring the beauty of its landscapes. The high alpine mountains stand out in the sky, revealing dark rock edges. The region is home to the longest fjord system in the world, Scoresby Sound. On the edge of the fjord, the eponymous village is considered one of the most remote inhabited places in the world. The colourful houses, so typical of Greenland, dot the landscape with small red, yellow and blue patches that stand out against the surrounding arid landscape. Immersing yourself in this region will allow you to discover the ancestral way of life of the last hunters of the polar region. This will be a veritable deep-dive into the lives of the Arctic's inhabitants.

Day 6 - Bjorneoer

Day 7 - Navigating through the sea ice

Enjoy the absolutely unique experience of sailing to the heart of the ice floe, this vast expanse of virgin, immaculate ice. The landscapes are constantly changing, shifting from a smooth, flat wilderness to a chaos of ice, then to channels of open water. Your ship will sail along these naturally open channels and through the areas where the frozen layer is thinnest, offering you the chance to experience magic maritime moments in the midst of drifting sea ice. It will also often be an opportunity to see a particular kind of fauna, totally dependent on the ice floe.

Day 8 - Northeast Greenland National Park



Wild Earth Travel

Small Ships, Big Adventures

wildearth-travel.com

info@wildearth-travel.com

With a craggy coastline formed by gigantic fjords, magnificent alpine mountains looming over them, the shores of north-east Greenland offer breathtaking landscapes and are home to the largest national park in the world. Covering an area of around one million square kilometres, almost half the island, the North-East Greenland National Park, a UNESCO Biosphere Reserve, is a particularly isolated region. Cut off for many months of the year by the ice floe, it is renowned for its pristine nature and rich wildlife.

Day 9 - Nord Fjord, Kejser Franz Joseph

Day 10 - Foster Jugt

Day 11 - Godthab Golf

Day 12 -13 Navigating through the sea ice

Enjoy the absolutely unique experience of sailing to the heart of the ice floe, this vast expanse of virgin, immaculate ice. The landscapes are constantly changing, shifting from a smooth, flat wilderness to a chaos of ice, then to channels of open water. Your ship will sail along these naturally open channels and through the areas where the frozen layer is thinnest, offering you the chance to experience magic maritime moments in the midst of drifting sea ice. It will also often be an opportunity to see a particular kind of fauna, totally dependent on the ice floe.

Day 14 - St Jonsfjorden

Day 15 - Longyearbyen, Spitsbergen

Longyearbyen is the capital of the Norwegian Svalbard archipelago, located on Svalbard's main island, and is the northernmost territorial capital on the planet. With winter temperatures dropping to below 40°C, the landscapes of this mining town are simply breathtaking. The glaciers, the mountains

stretching as far as the eye can see and the untouched nature, make you feel like you're in completely unexplored territory.

Day 16 - At sea aboard Le Commandant Charcot

Spend exceptional moments sailing aboard Le Commandant Charcot, the world's first luxury polar exploration vessel and the first PC2-class polar cruise ship capable of sailing into the very heart of the ice, on seas and oceans which the frozen conditions render inaccessible to ordinary ships. Le Commandant Charcot is fitted with oceanographic and scientific equipment selected by a committee of experts. Take advantage of the on-board lectures and opportunities for discussion with these specialists to learn more about the poles. Participate in furthering scientific research with PONANT and let us discover together what these fascinating destinations have yet to reveal to us.

Day 17 - Tromsø

In the north of the Arctic circle you'll discover Tromsø, a secluded town located in the county of Troms. Norwegians call it the "Paris of the north". You'll soon see why when you discover its extensive neoclassical architectural heritage. A stunning example is the Arctic cathedral, a major monument whose stylistic purity echoes the outline of the mountains surrounding the town.

Please note:

We are privileged guests in these extreme lands where we are at the mercy of weather and ice conditions. Our navigation, mainly in the fjords, will be determined by the type of ice we come across; as the fast ice must be preserved, we will take this factor into account from day to day in our itineraries. The sailing programme, outings, activities and observation of fauna cannot be guaranteed and are subject to weather and ice conditions. The experiences are unique and vary from day to day and for each departure. The Captain and the Expedition Leader will make every effort to ensure that your experience is as rich as possible, while respecting safety instructions and

Wild Earth Travel
Small Ships, Big Adventures

0800 945 3327 (within New Zealand) | +64 (0) 3 365 1355 | **1800 107 715** (within Australia)

info@wildearth-travel.com | wildearth-travel.com



Wild Earth Travel

Small Ships, Big Adventures

wildearth-travel.com

info@wildearth-travel.com

regulations imposed by the AECO.

Wild Earth Travel
Small Ships, Big Adventures

0800 945 3327 (within New Zealand) | +64 (0) 3 365 1355 | **1800 107 715** (within Australia)

info@wildearth-travel.com | **wildearth-travel.com**



YOUR SHIP: LE COMMANDANT-CHARCOT

YOUR SHIP:	Le Commandant-Charcot
VESSEL TYPE:	Polar Luxury Expedition
LENGTH:	149.9 meters
PASSENGER CAPACITY:	135 cabins
BUILT/REFURBISHED:	2018/2019

Be the first aboard Le Commandant-Charcot, the world's luxury polar exploration vessel, and enjoy a unique sailing experience in the Arctic or Antarctic!

With its hybrid propulsion combining liquefied natural gas (LNG) and electric generators, Le Commandant-Charcot has been designed to minimise the environmental impact of travel to the furthest latitudes.

The decoration of the ship, imagined by two internationally renowned design and architecture firms - the studio of Jean-Philippe Nuel and Wilmotte & Associates - is designed to be in harmony with the environment. The approach is contemporary with the desire to create a warm and elegant setting; stone, wood and leather recall the natural environment in which the ship is sailing.

Equipped with just 135 staterooms including 31 suites with balconies and outside views, Le Commandant-Charcot welcomes you in an intimate and refined atmosphere. Outstanding gastronomy in the two restaurants, relaxation in the indoor pool surrounded by its winter garden, relaxation in the well-being area with sauna and Snow Room... Like on a private yacht, each of our guests is unique.

PUBLIC AREAS

Le Commandant-Charcot has many common areas that are designed and equipped to meet all of your needs while preserving the intimacy of each passenger.

A 177 m² reception area includes: A reception/concierge desk, An expeditions desk, The ship's administrative services, The sales office, manned by our Hospitality & Travel Manager officer, Our boutique which sells clothing, jewellery, beauty products, postcards and various accessories, The image & photo desk.

The different lounges: A 302 m² main lounge including a 28 m² cigar lounge, a tea corner and a bar, with live music on selected evenings, A 400 m² panoramic bar and lounge, An open-air Bar.

The recreation spaces

Fitness & Beauty Corner: Fitness room: Elliptic, running machines, bicycles...

Beauty Corner: Hairdresser, Massage rooms, Sauna, Snow Room, Nail Shop.

Pool area: Indoor Pool and winter garden - Outdoor Pool

Theatre: Capacity: 270-276 - Main show room for conferences and live entertainment on selected evenings - State-of-the-art audio and video technology.

Leisure area: Public areas - Library - Medical centre.

16 Zodiac®.

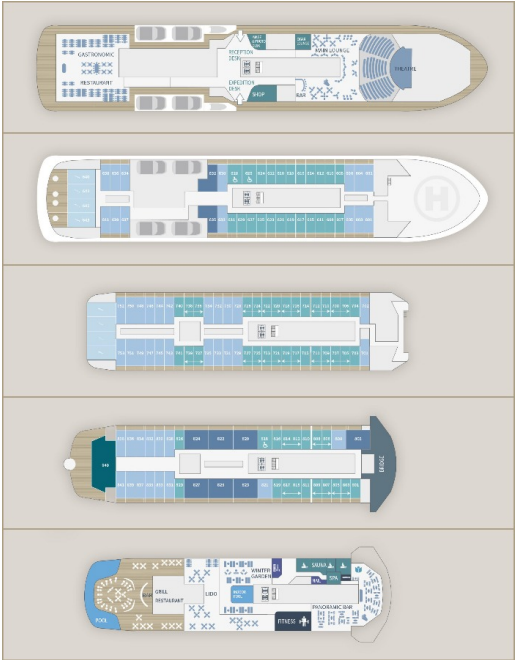


16 Zodiac®.

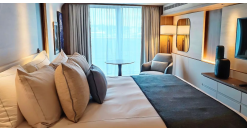
Wild Earth Travel
Small Ships, Big Adventures

wildearth-travel.com **info@wildearth-travel.com**

INSIDE YOUR SHIP



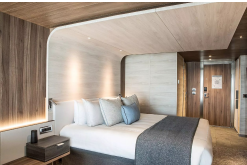
Deluxe Suite Deck 6



Deluxe Suite Deck 8



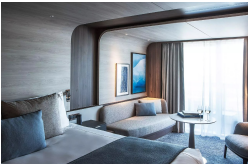
Grand Prestige Suite



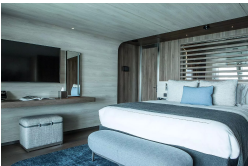
Prestige Stateroom Deck 7



Deluxe Suite Deck 7



Duplex Suite



Prestige Stateroom Deck 6



Prestige Stateroom Deck 8





Wild Earth Travel

Small Ships, Big Adventures



wildearth-travel.com

info@wildearth-travel.com

PRICING

28-Sep-2026 to 14-Oct-2026

Prestige Stateroom Deck 6	40900 AUD pp
Prestige Stateroom Deck 7	41680 AUD pp
Prestige Stateroom Deck 8	42460 AUD pp
Deluxe Suite Deck 6	43640 AUD pp
Deluxe Suite Deck 7	45610 AUD pp
Deluxe Suite Deck 8	47180 AUD pp
Prestige Suite Deck 7	60530 AUD pp
Prestige Suite Deck 8	62490 AUD pp
Grand Prestige Suite	64460 AUD pp
Privilege Suite Deck 8	68390 AUD pp
Duplex Suite	93920 AUD pp



Wild Earth Travel
Small Ships, Big Adventures

0800 945 3327 (within New Zealand) | +64 (0) 3 365 1355 | **1800 107 715** (within Australia)

info@wildearth-travel.com | **wildearth-travel.com**



Wild Earth Travel

Small Ships, Big Adventures

wildearth-travel.com

info@wildearth-travel.com

SPECIAL OFFERS

Online prices reflect the current brochure fare savings of up to 30%. Prices may change based on demand. Terms and conditions apply. This special offer is subject to availability. Please contact us for more details.



Wild Earth Travel

Small Ships, Big Adventures

0800 945 3327 (within New Zealand) | +64 (0) 3 365 1355 | **1800 107 715** (within Australia)

info@wildearth-travel.com | **wildearth-travel.com**