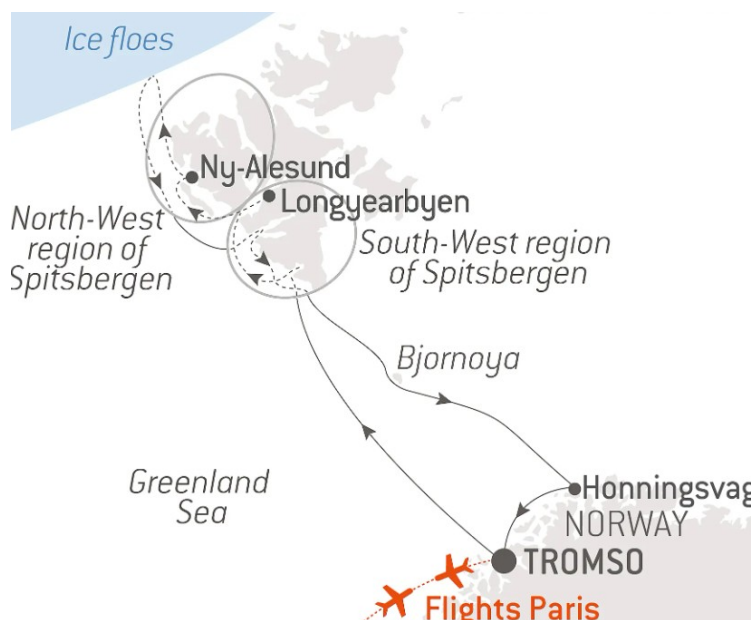


POLAR NIGHTS: FROM THE NORTH CAPE TO SPITSBERGEN LUXURY CRUISE

The writer Jørn Riel described the polar night as a "a world apart, [...] unique and fascinating, where nature reigns supreme and men keep a low profile." When the northern winter approaches, the sun hardly rises over the horizon any more: let yourself be guided towards a new temporality, the moment when a long dusk stretches out after the day, until the polar night which will extend until mid-February 2027 in Svalbard. From the delicious comfort of *_Le Commandant Charcot_* sailing from the jagged coastlines of Norway to the ice-covered reliefs of Spitsbergen, dive into the heart of landscapes lit by powdered hues and set off in search of the exhilarating spectacle of the Northern Lights and share unique moments, just a stone's throw away from the emblematic North Cape in Lapland, with the Sami, one of Europe's last indigenous communities.



ITINERARY

Day 1 - Tromsø

In the north of the Arctic circle you'll discover Tromsø, a secluded town located in the county of Troms. Norwegians call it the "Paris of the north". You'll soon see why when you discover its extensive neoclassical architectural heritage. A stunning example is the Arctic cathedral, a major monument whose stylistic purity echoes the outline of the mountains surrounding the town.

Day 2 - At sea aboard *Le Commandant Charcot*

Spend exceptional moments sailing aboard *Le Commandant Charcot*, the world's first luxury polar exploration vessel and the first PC2-class polar cruise ship capable of sailing into the very heart of the ice, on seas and oceans

Wild Earth Travel

Small Ships, Big Adventures



wildearth-travel.com

info@wildearth-travel.com

which the frozen conditions render inaccessible to ordinary ships. Le Commandant Charcot is fitted with oceanographic and scientific equipment selected by a committee of experts. Take advantage of the on-board lectures and opportunities for discussion with these specialists to learn more about the poles. Participate in furthering scientific research with PONANT and let us discover together what these fascinating destinations have yet to reveal to us.

Day 3 - South-West Region of Spitsbergen

Set sail for southwest Spitsbergen, immerse yourself in this environment unlike any other and explore its unexpected riches. In this natural sanctuary, the polar light combines with the changing weather of the Arctic, a big blue sky, the horizon scattered with clouds, the enveloping mist erasing the border between the land and the sea. Follow in the footsteps of the first explorers and admire the majestic fjords and glaciers sculpting the breathtaking landscapes, their icy waters shimmering beneath the midnight sun. The fjords, veritable cathedrals of ice, reveal their millennial secrets, while the glaciers, like sleeping giants, move slowly towards the sea, setting free sparkling icebergs. On the water, you might spot belugas and rorquals, while on the shores, seals and Arctic foxes add a touch of mystery to this living tableau, where the steep cliffs become breeding grounds for thousands of seabirds, like guillemots. Southwest Spitsbergen is an ode to nature in its rawest and purest form.

Day 4 - Longyearbyen, Spitsbergen

Longyearbyen is the capital of the Norwegian Svalbard archipelago, located on Svalbard's main island, and is the northernmost territorial capital on the planet. With winter temperatures dropping to below 40°C, the landscapes of this mining town are simply breathtaking. The glaciers, the mountains stretching as far as the eye can see and the untouched nature, make you feel like you're in completely unexplored territory.

Day 5 - Ny-Ålesund

During your cruise, discover Ny-Ålesund, a former mining town that has been transformed into a scientific base. Founded in 1916, this small town was the departure point for many Arctic expeditions, including those of the famous explorer Roald Amundsen. Don't miss a visit to the museum and its famous post office, considered to be the most northerly in the world!

Day 6 - Navigating through the sea ice

Enjoy the absolutely unique experience of sailing to the heart of the ice floe, this vast expanse of virgin, immaculate ice. The landscapes are constantly changing, shifting from a smooth, flat wilderness to a chaos of ice, then to channels of open water. Your ship will sail along these naturally open channels and through the areas where the frozen layer is thinnest, offering you the chance to experience magic maritime moments in the midst of drifting sea ice. It will also often be an opportunity to see a particular kind of fauna, totally dependent on the ice floe.

Day 7 - North-West region of Spitsbergen

A kingdom of contrasts and natural marvels dotted with islands and peninsulas, northwest Spitsbergen fascinates with its preserved beauty. On these pristine lands, infinity unveils itself, treating the eyes to beauty sculpted by nature and enhanced by the changing light. The fjords bathed by icy waters, the jagged mountains and the imposing glaciers stand majestically before you, like monumental sculptures. In these lands, where souls are filled with deep serenity, only the murmur of broken ice, bearing mysteries and legends, disturbs the calmness. Aboard our Zodiacs and in the company of naturalist-guides, get as close as possible to this unique fauna and discover this centre for scientific expedition departures. In the distance, majestic whales glide silently through the glacial waters, whereas seals, walrus and Arctic foxes add a playful touch of life. As Svalbard reindeer wander the vast expanses, Arctic terns liven up the polar sky with their gracious flight and polar bears, which you may be lucky enough to see, patrol magnificently along the icy shores.

Day 8 - South-West Region of Spitsbergen

Set sail for southwest Spitsbergen, immerse yourself in this environment unlike any other and explore its unexpected riches. In this natural sanctuary, the polar light combines with the changing weather of the Arctic, a big blue sky, the horizon scattered with clouds, the enveloping mist erasing the border between the land and the sea. Follow in the footsteps of the first explorers and admire the majestic fjords and glaciers sculpting the breathtaking landscapes, their icy waters shimmering beneath the midnight sun. The fjords, veritable cathedrals of ice, reveal their millennial secrets, while the glaciers, like sleeping giants, move slowly towards the sea, setting free sparkling icebergs.

Wild Earth Travel

Small Ships, Big Adventures

0800 945 3327 (within New Zealand) | +64 (0) 3 365 1355 | **1800 107 715** (within Australia)

info@wildearth-travel.com | **wildearth-travel.com**

Wild Earth Travel

Small Ships, Big Adventures



wildearth-travel.com

info@wildearth-travel.com

On the water, you might spot belugas and rorquals, while on the shores, seals and Arctic foxes add a touch of mystery to this living tableau, where the steep cliffs become breeding grounds for thousands of seabirds, like guillemots. Southwest Spitsbergen is an ode to nature in its rawest and purest form.

Please note:

The itinerary is subject to change based on port approvals and to comply with applicable government regulations. Please also note that the sailing programme, shore visits and activities cannot be guaranteed, as they are subject to weather and ice conditions.

Day 9 - Sailing along Bjornoya (Bear Island)

Halfway between Norway and Spitsbergen, you will sail not far from the coastlines of Bjørnøya, the southernmost island of Svalbard. From your ship, observe this isolated piece of land discovered in 1596 by the Dutch navigator Willem Barents, then looking for the Northwest Passage. Following a tough fight between a polar bear and the members of the expedition, he dubbed the place Bear Island. Regularly covered by a thick layer of fog, Bjørnøya shelters a meteorological station built in 1923, which is still in operation. Declared a nature reserve in 2002, the island is above all home to an enormous colony of sea birds: skuas, guillemots, puffins, Tridactyl gulls, petrels, gulls and little auks all coexist here.

Day 10 - Honningsvåg

If you feel like you have arrived at the end of the world in Honningsvåg, it is because this is the case. Halfway between Oslo and the North Pole, it competes with Hammerfest for the status of "the northernmost town in Continental Europe". Colourful houses light up this charming and typically Norwegian fishing port nestled in the hollows of the region's mountainous terrain. Travellers come to stay in the village to go to the North Cape. At the end of the road, you will see the globe that indicates that you are at the very end of Europe. At this point, only the Svalbard archipelago separates you from the North Pole. There is sea as far as the eye can see. The Northern Lights, the view of the immense cliff plunging into the sea, the thousands of puffins, gannets and cormorants that spin around you: everything here is grandiose.

Day 11 - Tromsø

In the north of the Arctic circle you'll discover Tromsø, a secluded town located in the county of Troms. Norwegians call it the "Paris of the north". You'll soon see why when you discover its extensive neoclassical architectural heritage. A stunning example is the Arctic cathedral, a major monument whose stylistic purity echoes the outline of the mountains surrounding the town.

Wild Earth Travel

Small Ships, Big Adventures

0800 945 3327 (within New Zealand) | +64 (0) 3 365 1355 | **1800 107 715** (within Australia)

info@wildearth-travel.com | **wildearth-travel.com**

Wild Earth Travel

Small Ships, Big Adventures



wildearth-travel.com

info@wildearth-travel.com

YOUR SHIP: LE COMMANDANT-CHARCOT

YOUR SHIP:	Le Commandant-Charcot
VESSEL TYPE:	Polar Luxury Expedition
LENGTH:	149.9 meters
PASSENGER CAPACITY:	135 cabins
BUILT/REFURBISHED:	2018/2019

Be the first aboard Le Commandant-Charcot, the world's luxury polar exploration vessel, and enjoy a unique sailing experience in the Arctic or Antarctic!

With its hybrid propulsion combining liquefied natural gas (LNG) and electric generators, Le Commandant-Charcot has been designed to minimise the environmental impact of travel to the furthest latitudes.

The decoration of the ship, imagined by two internationally renowned design and architecture firms - the studio of Jean-Philippe Nuel and Wilmotte & Associates - is designed to be in harmony with the environment. The approach is contemporary with the desire to create a warm and elegant setting; stone, wood and leather recall the natural environment in which the ship is sailing.

Equipped with just 135 staterooms including 31 suites with balconies and outside views, Le Commandant-Charcot welcomes you in an intimate and refined atmosphere. Outstanding gastronomy in the two restaurants, relaxation in the indoor pool surrounded by its winter garden, relaxation in the well-being area with sauna and Snow Room... Like on a private yacht, each of our guests is unique.

PUBLIC AREAS

Le Commandant-Charcot has many common areas that are designed and equipped to meet all of your needs while preserving the intimacy of each passenger.

A 177 m² reception area includes: A reception/concierge desk, An expeditions desk, The ship's administrative services, The sales office, manned by our Hospitality & Travel Manager officer, Our boutique which sells clothing, jewellery, beauty products, postcards and various accessories, The image & photo desk.

The different lounges: A 302 m² main lounge including a 28 m² cigar lounge, a tea corner and a bar, with live music on selected evenings, A 400 m² panoramic bar and lounge, An open-air Bar. The recreation spaces

Fitness & Beauty Corner: Fitness room: Elliptic, running machines, bicycles...

Beauty Corner: Hairdresser, Massage rooms, Sauna, Snow Room, Nail Shop.

Pool area: Indoor Pool and winter garden - Outdoor Pool

Theatre: Capacity: 270-276 - Main show room for conferences and live entertainment on selected evenings - State-of-the-art audio and video technology.

Leisure area: Public areas - Library - Medical centre.

16 Zodiac®.

Wild Earth Travel

Small Ships, Big Adventures

0800 945 3327 (within New Zealand) | +64 (0) 3 365 1355 | **1800 107 715** (within Australia)

info@wildearth-travel.com | **wildearth-travel.com**



Wild Earth Travel

Small Ships, Big Adventures



wildearth-travel.com

info@wildearth-travel.com



16 Zodiac®.



Wild Earth Travel

Small Ships, Big Adventures

0800 945 3327 (within New Zealand) | +64 (0) 3 365 1355 | **1800 107 715** (within Australia)

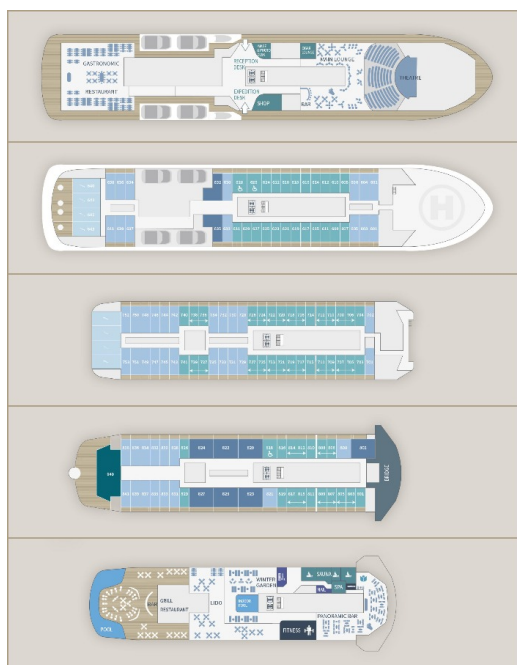
info@wildearth-travel.com | **wildearth-travel.com**



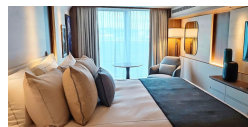
wildearth-travel.com

info@wildearth-travel.com

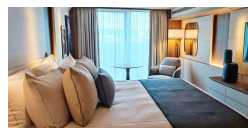
INSIDE YOUR SHIP



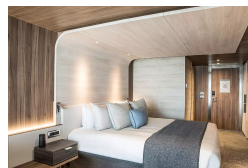
Deluxe Suite Deck 6



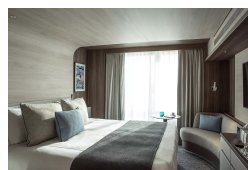
Deluxe Suite Deck 8



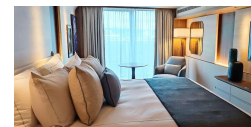
Grand Prestige Suite



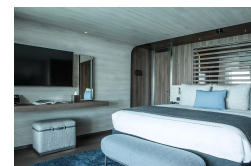
Prestige Stateroom Deck 7



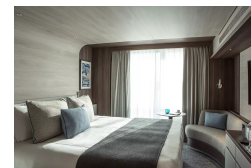
Deluxe Suite Deck 7



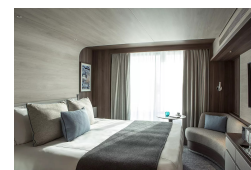
Duplex Suite



Prestige Stateroom Deck 6



Prestige Stateroom Deck 8



Wild Earth Travel

Small Ships, Big Adventures

wildearth-travel.com

info@wildearth-travel.com

PRICING

14-Oct-2026 to 24-Oct-2026

Prestige Stateroom Deck 6	20900 AUD pp
Prestige Stateroom Deck 7	21280 AUD pp
Prestige Stateroom Deck 8	21630 AUD pp
Deluxe Suite Deck 6	22180 AUD pp
Deluxe Suite Deck 7	23080 AUD pp
Deluxe Suite Deck 8	23810 AUD pp
Prestige Suite Deck 7	29980 AUD pp
Prestige Suite Deck 8	30890 AUD pp
Grand Prestige Suite	31800 AUD pp
Privilege Suite Deck 8	33600 AUD pp
Duplex Suite	45410 AUD pp

Wild Earth Travel

Small Ships, Big Adventures

0800 945 3327 (within New Zealand) | +64 (0) 3 365 1355 | **1800 107 715** (within Australia)

info@wildearth-travel.com | **wildearth-travel.com**



Wild Earth Travel

Small Ships, Big Adventures



wildearth-travel.com

info@wildearth-travel.com

SPECIAL OFFERS

Online prices reflect the current brochure fare savings of up to 30%. Prices may change based on demand. Terms and conditions apply. This special offer is subject to availability. Please contact us for more details.



Wild Earth Travel

Small Ships, Big Adventures

0800 945 3327 (within New Zealand) | +64 (0) 3 365 1355 | **1800 107 715** (within Australia)

info@wildearth-travel.com | **wildearth-travel.com**