

# Wild Earth Travel

*Small Ships, Big Adventures*

**wildearth-travel.com**

**info@wildearth-travel.com**

## POLAR LIGHTS: FROM NORTH CAPE TO THE LOFOTEN ISLANDS LUXURY CRUISE

With featured guest Ian Dawson, British Photo Ambassador.

Winter is silently approaching, and near the Arctic Circle daylight is slowly fading, giving way to the long twilight that precedes the darkness. From the welcoming comfort of *\_Le Commandant Charcot\_*, take time to discover the shores of Norway, including the breathtaking Lofoten archipelago. See the North Cape, the tip of mainland Europe, and explore the rugged coastline at the edge of the Arctic and the natural sanctuaries of Norway: dolomite cliffs, an archaeological site dating from the Bronze Age, pine forests, and Lapland, home to the Sami, one of Europe's last indigenous communities.



### ITINERARY

#### Day 1 - Tromsø

In the north of the Arctic circle you'll discover Tromsø, a secluded town located in the county of Troms. Norwegians call it the "Paris of the north". You'll soon see why when you discover its extensive neoclassical architectural heritage. A stunning example is the Arctic cathedral, a major monument whose stylistic purity echoes the outline of the mountains surrounding the town.

#### Day 2 - Honningsvåg

If you feel like you have arrived at the end of the world in Honningsvåg, it is because this is the case. Halfway between Oslo and the North Pole, it competes with Hammerfest for the status of "the northernmost town in

Wild Earth Travel

*Small Ships, Big Adventures*

**0800 945 3327** (within New Zealand) | +64 (0) 3 365 1355 | **1800 107 715** (within Australia)

info@wildearth-travel.com | **wildearth-travel.com**

# Wild Earth Travel

*Small Ships, Big Adventures*



**wildearth-travel.com**

**info@wildearth-travel.com**

Continental Europe". Colourful houses light up this charming and typically Norwegian fishing port nestled in the hollows of the region's mountainous terrain. Travellers come to stay in the village to go to the North Cape. At the end of the road, you will see the globe that indicates that you are at the very end of Europe. At this point, only the Svalbard archipelago separates you from the North Pole. There is sea as far as the eye can see. The Northern Lights, the view of the immense cliff plunging into the sea, the thousands of puffins, gannets and cormorants that spin around you: everything here is grandiose.

## Day 3 - Sailing along Bjornoya (Bear Island)

Halfway between Norway and Spitsbergen, you will sail not far from the coastlines of Bjørnøya, the southernmost island of Svalbard. From your ship, observe this isolated piece of land discovered in 1596 by the Dutch navigator Willem Barents, then looking for the Northwest Passage. Following a tough fight between a polar bear and the members of the expedition, he dubbed the place Bear Island. Regularly covered by a thick layer of fog, Bjørnøya shelters a meteorological station built in 1923, which is still in operation. Declared a nature reserve in 2002, the island is above all home to an enormous colony of sea birds: skuas, guillemots, puffins, Tridactyl gulls, petrels, gulls and little auks all coexist here.

## Day 4 - Alta

Beyond the Arctic Circle, Alta, in the far north of Norway, is the biggest city in Finnmark county. Alta will reveal itself to you at the end of the eponymous fjord, Altafjorden. The region offers a mix of forest, mountainous and coastal landscapes. It is on the verge of obtaining the "sustainable destination" label, a national label awarded to destinations that are committed to a sustainable approach to tourism for the long term. Alta invites you to experience unique moments, whether meeting the Sami people reindeer herders who have ancestral traditions and yet embrace modernity or during walks, snowshoe hikes or dog sledding, depending on the season.

## Day 5 - Tromsø

In the north of the Arctic circle you'll discover Tromsø, a secluded town located in the county of Troms. Norwegians call it the "Paris of the north". You'll soon see why when you discover its extensive neoclassical architectural heritage. A stunning example is the Arctic cathedral, a major monument whose stylistic

purity echoes the outline of the mountains surrounding the town.

## Day 6 - Harstad

Beyond the Arctic Circle, north of the Norwegian Sea and at the gateway to the Vesterålen archipelago and the sumptuous Lofoten islands, surprising Harstad enjoys an extraordinary natural setting. A favoured destination for its gentle way of life, the small town and surrounding area are a concentrate of the northern Norway's finest features: majestic coniferous forests, rugged mountains, bewitching fjords and preserved archipelagos. As inhospitable as they are magnificent, these lands still bear traces of the Bronze Age. For example, work tools, jewels and cairns sheltering many tombs that date back several millennia have been discovered during archaeological excavations.

## Day 7 - Leknes, Lofoten

Way beyond the Arctic Circle, Lofoten Islands are truly considered to be in "another world". A jewel of nature in its most pristine state, this archipelago with its jagged coastline offers you majestic settings of high alpine summits, sandy beaches, green prairies and fjords of a deep blue, where countless bird colonies make their nests. Whether you visit Å, or Nusfjord, listed by UNESCO, enjoy authentic and memorable moments.

## Days 8 - 9 - Narvik

Beyond the Arctic Circle, you will discover Narvik, nestling in the heart of impressive mountains that plunge into the Ofotfjord. It is on the verge of obtaining the "sustainable destination" label, a national label awarded to destinations that are committed to a sustainable approach to tourism for the long term. You will be mesmerised by its scenery. From Narvik, it is possible to take the Ofoten Line towards Sweden. This historic railway once linked the mineral-rich mines of Kiruna in Sweden to the ice-free port of Narvik. You will experience unique moments whether meeting the Sami people reindeer herders who have ancestral traditions and yet embrace modernity.

### Please note:

The itinerary may be altered based on port approvals and to comply with

Wild Earth Travel

*Small Ships, Big Adventures*

**0800 945 3327** (within New Zealand) | +64 (0) 3 365 1355 | **1800 107 715** (within Australia)

info@wildearth-travel.com | **wildearth-travel.com**





# Wild Earth Travel

*Small Ships, Big Adventures*



**wildearth-travel.com**

**info@wildearth-travel.com**

applicable government regulations The sailing programme, shore visits, activities and wildlife sightings cannot be guaranteed and are subject to weather conditions.

**Wild Earth Travel**

*Small Ships, Big Adventures*

**0800 945 3327** (within New Zealand) | +64 (0) 3 365 1355 | **1800 107 715** (within Australia)

info@wildearth-travel.com | **wildearth-travel.com**

# Wild Earth Travel

*Small Ships, Big Adventures*



**wildearth-travel.com**

**info@wildearth-travel.com**

## YOUR SHIP: LE COMMANDANT-CHARCOT

<b>YOUR SHIP:</b>	<b>Le Commandant-Charcot</b>
<b>VESSEL TYPE:</b>	<b>Polar Luxury Expedition</b>
<b>LENGTH:</b>	<b>149.9 meters</b>
<b>PASSENGER CAPACITY:</b>	<b>135 cabins</b>
<b>BUILT/REFURBISHED:</b>	<b>2018/2019</b>

Be the first aboard Le Commandant-Charcot, the world's luxury polar exploration vessel, and enjoy a unique sailing experience in the Arctic or Antarctic!

With its hybrid propulsion combining liquefied natural gas (LNG) and electric generators, Le Commandant-Charcot has been designed to minimise the environmental impact of travel to the furthest latitudes.

The decoration of the ship, imagined by two internationally renowned design and architecture firms - the studio of Jean-Philippe Nuel and Wilmotte & Associates - is designed to be in harmony with the environment. The approach is contemporary with the desire to create a warm and elegant setting; stone, wood and leather recall the natural environment in which the ship is sailing.

Equipped with just 135 staterooms including 31 suites with balconies and outside views, Le Commandant-Charcot welcomes you in an intimate and refined atmosphere. Outstanding gastronomy in the two restaurants, relaxation in the indoor pool surrounded by its winter garden, relaxation in the well-being area with sauna and Snow Room... Like on a private yacht, each of our guests is unique.

### PUBLIC AREAS

Le Commandant-Charcot has many common areas that are designed and equipped to meet all of your needs while preserving the intimacy of each passenger.

A 177 m<sup>2</sup> reception area includes: A reception/concierge desk, An expeditions desk, The ship's administrative services, The sales office, manned by our Hospitality & Travel Manager officer, Our boutique which sells clothing, jewellery, beauty products, postcards and various accessories, The image & photo desk.

The different lounges: A 302 m<sup>2</sup> main lounge including a 28 m<sup>2</sup> cigar lounge, a tea corner and a bar, with live music on selected evenings, A 400 m<sup>2</sup> panoramic bar and lounge, An open-air Bar. The recreation spaces

Fitness & Beauty Corner: Fitness room: Elliptic, running machines, bicycles...

Beauty Corner: Hairdresser, Massage rooms, Sauna, Snow Room, Nail Shop.

Pool area: Indoor Pool and winter garden - Outdoor Pool

Theatre: Capacity: 270-276 - Main show room for conferences and live entertainment on selected evenings - State-of-the-art audio and video technology.

Leisure area: Public areas - Library - Medical centre.

16 Zodiac®.

Wild Earth Travel

*Small Ships, Big Adventures*

**0800 945 3327** (within New Zealand) | +64 (0) 3 365 1355 | **1800 107 715** (within Australia)

info@wildearth-travel.com | **wildearth-travel.com**





# Wild Earth Travel

*Small Ships, Big Adventures*



**wildearth-travel.com**

**info@wildearth-travel.com**



16 Zodiac®.



## Wild Earth Travel

*Small Ships, Big Adventures*

**0800 945 3327** (within New Zealand) | +64 (0) 3 365 1355 | **1800 107 715** (within Australia)

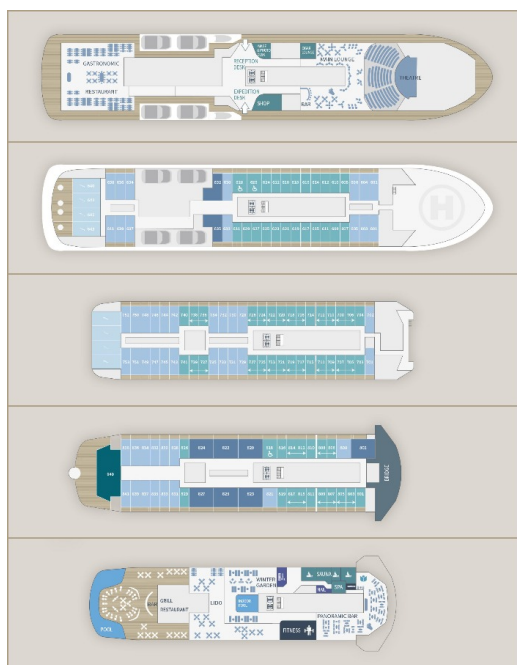
info@wildearth-travel.com | **wildearth-travel.com**



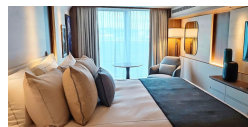
[wildearth-travel.com](http://wildearth-travel.com)

[info@wildearth-travel.com](mailto:info@wildearth-travel.com)

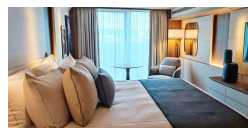
## INSIDE YOUR SHIP



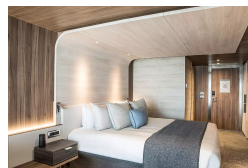
Deluxe Suite Deck 6



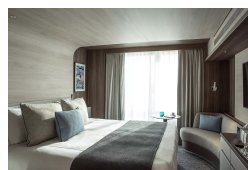
Deluxe Suite Deck 8



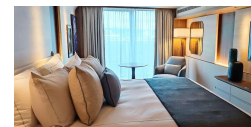
Grand Prestige Suite



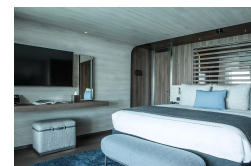
Prestige Stateroom Deck 7



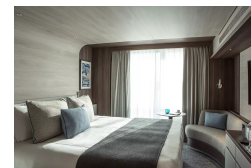
Deluxe Suite Deck 7



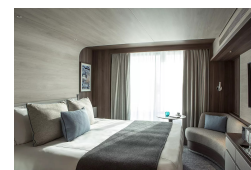
Duplex Suite



Prestige Stateroom Deck 6



Prestige Stateroom Deck 8





# Wild Earth Travel

*Small Ships, Big Adventures*

**wildearth-travel.com**

**info@wildearth-travel.com**

## PRICING

**24-Oct-2026 to 01-Nov-2026**

<b>Prestige Stateroom Deck 6</b>	<b>15740 AUD pp</b>
<b>Prestige Stateroom Deck 7</b>	<b>15990 AUD pp</b>
<b>Prestige Stateroom Deck 8</b>	<b>16260 AUD pp</b>
<b>Deluxe Suite Deck 6</b>	<b>16630 AUD pp</b>
<b>Deluxe Suite Deck 7</b>	<b>17280 AUD pp</b>
<b>Deluxe Suite Deck 8</b>	<b>17780 AUD pp</b>
<b>Prestige Suite Deck 7</b>	<b>22130 AUD pp</b>
<b>Prestige Suite Deck 8</b>	<b>22760 AUD pp</b>
<b>Grand Prestige Suite</b>	<b>23400 AUD pp</b>
<b>Privilege Suite Deck 8</b>	<b>24670 AUD pp</b>
<b>Duplex Suite</b>	<b>32960 AUD pp</b>

**Wild Earth Travel**

*Small Ships, Big Adventures*

**0800 945 3327** (within New Zealand) | +64 (0) 3 365 1355 | **1800 107 715** (within Australia)

info@wildearth-travel.com | **wildearth-travel.com**



# Wild Earth Travel

*Small Ships, Big Adventures*



**wildearth-travel.com**

**info@wildearth-travel.com**

## SPECIAL OFFERS

Online prices reflect the current brochure fare savings of up to 30%. Prices may change based on demand. Terms and conditions apply. This special offer is subject to availability. Please contact us for more details.



**Wild Earth Travel**

*Small Ships, Big Adventures*

**0800 945 3327** (within New Zealand) | +64 (0) 3 365 1355 | **1800 107 715** (within Australia)

info@wildearth-travel.com | **wildearth-travel.com**