

# Wild Earth Travel

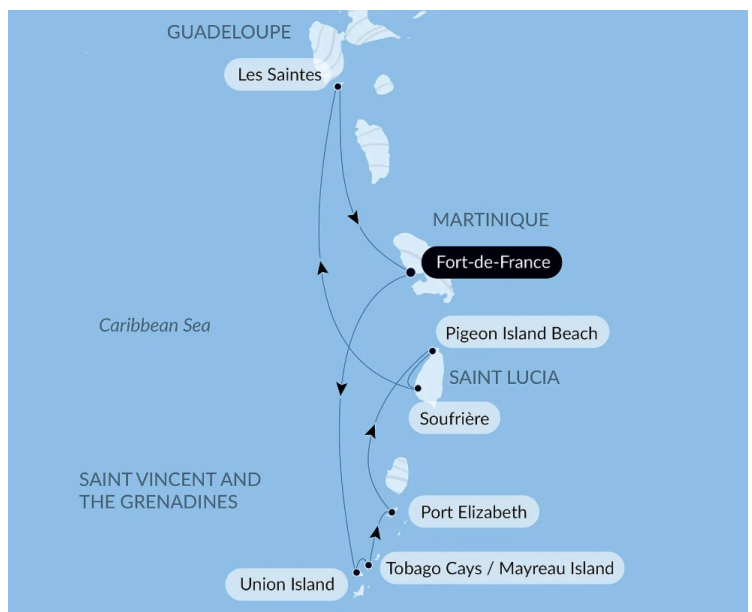
*Small Ships, Big Adventures*

**wildearth-travel.com**

**info@wildearth-travel.com**

## PEARLS OF THE CARIBBEAN - LUXURY CRUISE

Turquoise sea, serene islands and breathtaking sunsets: welcome to the heart of the West Indies, where the gentle way of life is everywhere. During eight days, succumb to the incredible charm of welcoming and colourful villages and indulge in pure idleness along the idyllic beaches of Les Saintes and the Grenadines archipelago. Fans of nature and desert island stories will also be won over by the wild landscapes of Saint Lucia and its rocky pitons, as well as by the exceptional marine life of the Tobago Cays, bound together by the most beautiful coral reef in the West Indies.



### ITINERARY

#### Day 1 Fort-de-France

Located on the western coast of Martinique, Fort-de-France will amaze you by the splendour of its bay, a magnificent cut-out in the coastline, considered as one of the most beautiful in the world. At the harbour mouth, on its strip of land, fort Saint-Louis overlooks the capital city of Martinique. If you climb up to it, you can see some breath-taking views. Saint Louis Cathedral and the Schoelcher library bear witness to a secular history, intimately linked to the island's story. Why not try some fresh coconut at the colourful Grand Marche. Two really pleasant places you can take a breather in, right in the heart of the city, are the garden of Balata and the Aime Cesaire park.

#### Day 2 Union Island

Wild Earth Travel

*Small Ships, Big Adventures*

**0800 945 3327** (within New Zealand) | +64 (0) 3 365 1355 | **1800 107 715** (within Australia)

info@wildearth-travel.com | **wildearth-travel.com**



# Wild Earth Travel

*Small Ships, Big Adventures*

**wildearth-travel.com**

**info@wildearth-travel.com**

Deserted bays, long stretches of golden sand, turquoise waters and endless coral reefs - Union Island is without a doubt one of the most beautiful islands in the Caribbean. Overlooked by soaring peaks, this strange little strip of land owes its nickname of "the Tahiti of the West Indies" to its volcanic silhouette and its large swathes of greenery. When you call here, you will discover what the locals consider to be "the best-kept secret in the Grenadines" -Chatham Bay. Surrounded by hills and valleys carpeted in tropical rainforest, sheltering many sea turtles, this delightful half-moon of sand is, each day, the setting for the tireless ballet of the numerous pelicans who inhabit the island.

## Day 3 Tobago Cays

Scattered between St Vincent and Grenada, the Tobago Cays comprises five little islands: Petit Rameau, Petit Bateau, Baradal, Petit Tabac and Jamesby. This rosary of uninhabited cays in the southern West Indies is a marine park whose turquoise lagoons provide a home and safe haven for some outstanding marine fauna, including peaceful green turtles. Girded and united by a coral reef, these secluded islands are a peaceful paradise for divers, swimmers and snorkellers.

## Day 4 Mayreau Island

Among the string of paradisiac islands with their sandy beaches that form the Saint Vincent and the Grenadines archipelago, Mayreau is the smallest. Its peaceful and idyllic atmosphere, far from the madding crowd, invites you to relax. On shore, enjoy a shaded and fully equipped beach from which to go snorkelling if you'd like to observe the colourful fish around the coral sitting at the foot of the rocks that stretch across the bay.

## Day 5 Port Elizabeth, Bequia Island

In the heart of the Caribbean, Bequia is the second-largest of 32 islands that make up the country of St Vincent and the Grenadines. You will love the lively and picturesque atmosphere of Port Elizabeth, the island's main town. From the port, a promenade lined with beautiful traditional houses, landscaped gardens and small restaurants runs along the shoreline. It leads to Princess Margaret Beach, a wild beach where Princess Margaret herself has stayed and which seems to emerge directly from the tropical forest. From rainforest to lush

meadows and long stretches of sand, Bequia will offer you a natural setting that is conducive to lovely walks and to spending time on the beach.

## Day 6 Pigeon Island Beach & Soufrière

Linked to St Lucia by a sand causeway, Pigeon Island has been a designated National Park since 1979. On this wild and pristine land, you will be inspired to take pleasant walks amid the tropical vegetation and through a magnificent tree-filled garden. You will also be irresistibly drawn to the two pretty little sandy beaches nestling on the southern side and bathed by crystal-clear waters. While snorkelling, be sure to explore the underwater world that is teeming with life, along the rocks lining this peninsula's coast. You will thoroughly enjoy the calm and beauty of this place, which is really conducive to simply relaxing. Nestled in the crook of a breath-taking bay, the former capital of St Lucia is brimming with attractions. Soufriere is famous for The Pitons, volcanic spires that tower over the entrance to the town. In the vicinity of the lush botanical gardens, you will be able to enjoy the curative powers of the Diamond Falls mineral baths. From the beach at the north end of the bay, you can set off to explore the reefs that are home to stunning gardens of sea fans at the foot of the cliffs that plunge into the sea.

## Day 7 Les Saintes

During the feast of All Saints in 1493, Christopher Columbus discovered this archipelago of nine islands that he named "The Saints". Today, only two of them are inhabited. Terre de Haut, in the east, is dominated by the Morne Mire hill; at the summit stands Fort Napoleon, paying homage to the islands' history. In the heart of the botanical garden, shared by iguanas and cacti, there is an exceptional view of the Baie des Saintes, one of the most beautiful in the world. The long shady beach of Pompierre, where it is forbidden to drop anchor, is a peaceful place for a swim, while Pain de Sucre Beach offers wonderful opportunities for snorkelling. On the island, don't forget to taste the local speciality, the "tourment d'amour", a cake made with coconut.

## Day 8 Fort-de-France

Located on the western coast of Martinique, Fort-de-France will amaze you by the splendour of its bay, a magnificent cut-out in the coastline, considered as one of the most beautiful in the world. At the harbour mouth, on its strip of land, fort Saint-Louis overlooks the capital city of Martinique. If you climb up to

Wild Earth Travel

*Small Ships, Big Adventures*

**0800 945 3327** (within New Zealand) | +64 (0) 3 365 1355 | **1800 107 715** (within Australia)

info@wildearth-travel.com | **wildearth-travel.com**



# Wild Earth Travel

*Small Ships, Big Adventures*

**wildearth-travel.com**

**info@wildearth-travel.com**

it, you can see some breath-taking views. Saint Louis Cathedral and the Schoelcher library bear witness to a secular history, intimately linked to the island's story. Why not try some fresh coconut at the colourful Grand Marche. Two really pleasant places you can take a breather in, right in the heart of the city, are the garden of Balata and the Aime Cesaire park.

**Please Note:**

Itineraries are subject to change.

**Wild Earth Travel**

*Small Ships, Big Adventures*

**0800 945 3327** (within New Zealand) | +64 (0) 3 365 1355 | **1800 107 715** (within Australia)

info@wildearth-travel.com | **wildearth-travel.com**





# Wild Earth Travel

*Small Ships, Big Adventures*

**wildearth-travel.com**

**info@wildearth-travel.com**

## YOUR SHIP: LE BELLOT

<b>YOUR SHIP:</b>	<b>Le Bellot</b>
<b>VESSEL TYPE:</b>	<b>Luxury Expedition / Cruise Ship</b>
<b>LENGTH:</b>	<b>131 metres</b>
<b>PASSENGER CAPACITY:</b>	<b>184</b>
<b>BUILT/REFURBISHED:</b>	<b>2019-2020</b>

Featuring innovative and environmentally-friendly equipment, elegantly designed staterooms, spacious suites with large windows, and lounge areas that open onto the outside, this new limited-capacity yacht boasting just 92 staterooms and suites will offer you a truly unique cruising experience.

As the first ship in a new series that remains true to the Ponant spirit, Le Bellot will embody the unique atmosphere that is the cruise line's hallmark: a subtle blend of refinement, intimacy and comfort.

Aboard this ship that flies the French flag, you will experience the incomparable pleasure of an intimate cruise, with the possibility of exploring an ever-increasing range of destinations in an ethnic-chic ambiance with luxury service.

Experience a luxurious setting where the accent is on authenticity and passion for travel.

### RESTAURANTS

As it is an essential part of French culture, gastronomy will naturally have pride of place aboard this new ship.

To the back of Deck 4, you will find a 260 m<sup>2</sup> panoramic restaurant which can accommodate all of our passengers in a single sitting. Designed differently to that on our other ships, this

dining area, which opens onto the outside, will have a buffet of salads, desserts and cheeses at your disposal. Our discreet and attentive crew will provide table service for hot meals.

In a relaxed atmosphere, an outdoor grill on Deck 3 will serve grilled meats with a variety of salads and desserts.

### PUBLIC AREAS

Le Bellot has many common areas that are designed and equipped to meet all of your needs while preserving the intimacy of each passenger.

A 140 m<sup>2</sup> reception area includes:

A reception/concierge desk,

An excursions desk,

The ship's administrative services,

The sales office, manned by our Guest Relations Officer,

Our 50 m<sup>2</sup> boutique which sells clothing, jewellery, beauty products, postcards and various accessories,

Toilets accessible to passengers with reduced mobility.

A new hydraulic platform with adjustable height provides:

Easier boarding than on any other cruise ship,

Easier Zodiac embarkation and disembarkation for expeditions,

Easier access to the sea for swimming and practising various water sports such as kayaking or paddle-boarding.

A pool deck offering:

A pool with a panoramic view, equipped with a counter-current swimming system,

A pleasant solarium,

An outdoor bar and lounge with armchairs and sofas.

A 200 m<sup>2</sup> main lounge which can accommodate all of our passengers to share convivial moments and to host activities



Wild Earth Travel  
*Small Ships, Big Adventures*

**0800 945 3327** (within New Zealand) | +64 (0) 3 365 1355 | **1800 107 715** (within Australia)

info@wildearth-travel.com | **wildearth-travel.com**



# Wild Earth Travel

*Small Ships, Big Adventures*

**wildearth-travel.com**

**info@wildearth-travel.com**

organised during the day or evening.

Lastly, a theatre that seats 188, equipped with:

The latest sound and lighting technology,

A LED wall as the stage backdrop, for the projection of high-resolution images and videos.



and videos.

**Wild Earth Travel**

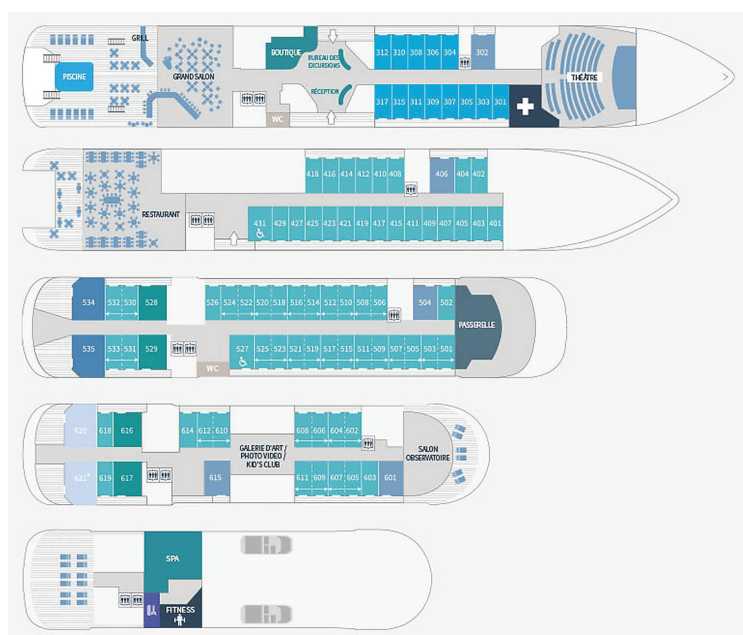
*Small Ships, Big Adventures*

**0800 945 3327** (within New Zealand) | +64 (0) 3 365 1355 | **1800 107 715** (within Australia)

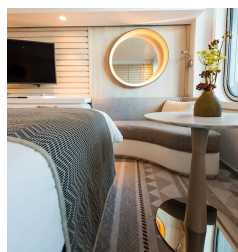
info@wildearth-travel.com | **wildearth-travel.com**



## INSIDE YOUR SHIP



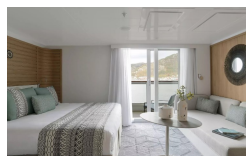
Deluxe Stateroom



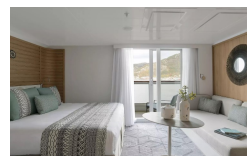
Deluxe Suite



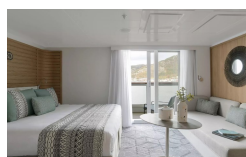
Deluxe Suite Deck 3



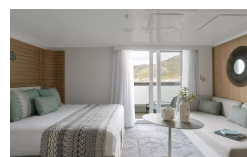
Deluxe Suite Deck 4



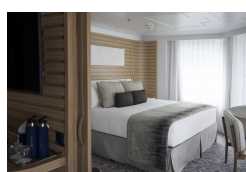
Deluxe Suite Deck 5



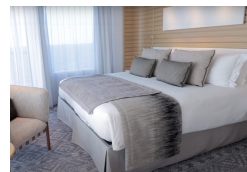
Deluxe Suite Deck 6



Grand Deluxe Suite



Grand Deluxe Suite Deck 5



# Wild Earth Travel

*Small Ships, Big Adventures*

**wildearth-travel.com**

**info@wildearth-travel.com**

## PRICING

### 29-Nov-2025 to 07-Dec-2025

Deluxe Stateroom	7980 AUD pp
Prestige Deck 4	8410 AUD pp
Prestige Deck 5	8650 AUD pp
Prestige Deck 6	8990 AUD pp
Deluxe Suite Deck 3	12090 AUD pp
Deluxe Suite Deck 4	12090 AUD pp
Deluxe Suite Deck 5	12090 AUD pp
Deluxe Suite Deck 6	12090 AUD pp
Prestige Deck 5 Suite	13000 AUD pp
Prestige Deck 6 Suite	13420 AUD pp
Privilege Suite Deck 5	13760 AUD pp
Privilege Suite Deck 6	13760 AUD pp
Grand Deluxe Suite Deck 5	14170 AUD pp
Grand Deluxe Suite Deck 6	14170 AUD pp

### 12-Dec-2025 to 20-Dec-2025

Deluxe Stateroom	7550 AUD pp
Prestige Stateroom Deck 4	7950 AUD pp
Prestige Stateroom Deck 5	8190 AUD pp
Prestige Stateroom Deck 6	8500 AUD pp
Deluxe Suite Deck 6	11420 AUD pp
Deluxe Suite Deck 5	11420 AUD pp
Deluxe Suite Deck 4	11420 AUD pp
Deluxe Suite	11420 AUD pp
Prestige Suite Deck 5	12270 AUD pp
Prestige Suite Deck 6	12670 AUD pp
Privilege Suite Deck 6	12990 AUD pp
Privilege Suite	12990 AUD pp
Grand Deluxe Suite	13370 AUD pp
Grand Deluxe Suite Deck 6	13370 AUD pp
Owner's Suite	17070 AUD pp



# Wild Earth Travel

*Small Ships, Big Adventures*

**wildearth-travel.com**

**info@wildearth-travel.com**

## PRICING

### 20-Dec-2025 to 28-Dec-2025

Deluxe Stateroom	8420 AUD pp
Prestige Stateroom Deck 4	8870 AUD pp
Prestige Stateroom Deck 5	9140 AUD pp
Prestige Stateroom Deck 6	9490 AUD pp
Deluxe Suite Deck 6	12770 AUD pp
Deluxe Suite Deck 5	12770 AUD pp
Deluxe Suite Deck 4	12770 AUD pp
Deluxe Suite	12770 AUD pp
Prestige Suite Deck 5	13730 AUD pp
Prestige Suite Deck 6	14180 AUD pp
Privilege Suite	14540 AUD pp
Privilege Suite Deck 6	14540 AUD pp
Grand Deluxe Suite	14970 AUD pp
Grand Deluxe Suite Deck 6	14970 AUD pp
Owner's Suite	16480 AUD pp

### 28-Jan-2026 to 04-Feb-2026

Deluxe Stateroom	7110 AUD pp
Prestige Deck 4	7490 AUD pp
Prestige Deck 5	7700 AUD pp
Prestige Deck 6	8000 AUD pp
Deluxe Suite Deck 6	10740 AUD pp
Deluxe Suite Deck 3	10740 AUD pp
Deluxe Suite Deck 4	10740 AUD pp
Deluxe Suite Deck 5	10740 AUD pp
Prestige Deck 5 Suite	11540 AUD pp
Prestige Deck 6 Suite	11910 AUD pp
Privilege Suite Deck 6	12210 AUD pp
Privilege Suite Deck 5	12210 AUD pp
Grand Deluxe Suite Deck 5	12570 AUD pp
Grand Deluxe Suite Deck 6	12570 AUD pp

Wild Earth Travel

*Small Ships, Big Adventures*

**0800 945 3327** (within New Zealand) | +64 (0) 3 365 1355 | **1800 107 715** (within Australia)

info@wildearth-travel.com | wildearth-travel.com





# Wild Earth Travel

*Small Ships, Big Adventures*

**wildearth-travel.com**

**info@wildearth-travel.com**

## PRICING

### 04-Feb-2026 to 11-Feb-2026

<b>Deluxe Stateroom</b>	<b>5850 AUD pp</b>
<b>Prestige Deck 4</b>	<b>6150 AUD pp</b>
<b>Prestige Deck 5</b>	<b>6330 AUD pp</b>
<b>Prestige Deck 6</b>	<b>6580 AUD pp</b>
<b>Deluxe Suite Deck 6</b>	<b>8800 AUD pp</b>
<b>Deluxe Suite Deck 3</b>	<b>8800 AUD pp</b>
<b>Deluxe Suite Deck 5</b>	<b>8800 AUD pp</b>
<b>Deluxe Suite Deck 4</b>	<b>8800 AUD pp</b>
<b>Prestige Deck 5 Suite</b>	<b>9460 AUD pp</b>
<b>Prestige Deck 6 Suite</b>	<b>9770 AUD pp</b>
<b>Privilege Suite Deck 5</b>	<b>10010 AUD pp</b>
<b>Privilege Suite Deck 6</b>	<b>10010 AUD pp</b>
<b>Grand Deluxe Suite Deck 5</b>	<b>10300 AUD pp</b>
<b>Grand Deluxe Suite Deck 6</b>	<b>10300 AUD pp</b>

<b>Deluxe Stateroom</b>	<b>8420 AUD pp</b>
<b>Prestige Stateroom Deck 4</b>	<b>8870 AUD pp</b>
<b>Prestige Stateroom Deck 5</b>	<b>9140 AUD pp</b>
<b>Prestige Stateroom Deck 6</b>	<b>9490 AUD pp</b>
<b>Deluxe Suite</b>	<b>12770 AUD pp</b>
<b>Deluxe Suite Deck 5</b>	<b>12770 AUD pp</b>
<b>Deluxe Suite Deck 4</b>	<b>12770 AUD pp</b>
<b>Deluxe Suite Deck 6</b>	<b>12770 AUD pp</b>
<b>Prestige Suite Deck 5</b>	<b>13730 AUD pp</b>
<b>Prestige Suite Deck 6</b>	<b>14180 AUD pp</b>
<b>Privilege Suite</b>	<b>14540 AUD pp</b>
<b>Privilege Suite Deck 6</b>	<b>14540 AUD pp</b>
<b>Grand Deluxe Suite Deck 6</b>	<b>14970 AUD pp</b>
<b>Grand Deluxe Suite</b>	<b>14970 AUD pp</b>
<b>Owner's Suite</b>	<b>16480 AUD pp</b>

### 08-Mar-2026 to 16-Mar-2026



Wild Earth Travel  
*Small Ships, Big Adventures*

**0800 945 3327** (within New Zealand) | +64 (0) 3 365 1355 | **1800 107 715** (within Australia)

info@wildearth-travel.com | wildearth-travel.com

# Wild Earth Travel

*Small Ships, Big Adventures*

**wildearth-travel.com**

**info@wildearth-travel.com**

## PRICING

### 30-Dec-2026 to 06-Jan-2027

Deluxe Stateroom	7680 AUD pp
Prestige Deck 4	8090 AUD pp
Prestige Deck 5	8320 AUD pp
Prestige Deck 6	8630 AUD pp
Deluxe Suite Deck 4	11580 AUD pp
Deluxe Suite Deck 5	11580 AUD pp
Deluxe Suite Deck 6	11580 AUD pp
Deluxe Suite Deck 3	11580 AUD pp
Prestige Deck 5 Suite	12460 AUD pp
Prestige Deck 6 Suite	12860 AUD pp
Privilege Suite Deck 5	13170 AUD pp
Privilege Suite Deck 6	13170 AUD pp
Grand Deluxe Suite Deck 5	13580 AUD pp
Grand Deluxe Suite Deck 6	13580 AUD pp

Deluxe Stateroom	6540 AUD pp
Prestige Deck 4	6880 AUD pp
Prestige Deck 5	7080 AUD pp
Prestige Deck 6	7360 AUD pp
Deluxe Suite Deck 4	9860 AUD pp
Deluxe Suite Deck 3	9860 AUD pp
Deluxe Suite Deck 6	9860 AUD pp
Deluxe Suite Deck 5	9860 AUD pp
Prestige Deck 5 Suite	10610 AUD pp
Prestige Deck 6 Suite	10940 AUD pp
Privilege Suite Deck 6	11220 AUD pp
Privilege Suite Deck 5	11220 AUD pp
Grand Deluxe Suite Deck 6	11560 AUD pp
Grand Deluxe Suite Deck 5	11560 AUD pp

### 06-Jan-2027 to 13-Jan-2027

# Wild Earth Travel

*Small Ships, Big Adventures*

**wildearth-travel.com**

**info@wildearth-travel.com**

## PRICING

### 20-Jan-2027 to 27-Jan-2027

<b>Deluxe Stateroom</b>	<b>6140 AUD pp</b>
<b>Prestige Deck 4</b>	<b>6450 AUD pp</b>
<b>Prestige Deck 5</b>	<b>6640 AUD pp</b>
<b>Prestige Deck 6</b>	<b>6900 AUD pp</b>
<b>Deluxe Suite Deck 3</b>	<b>9240 AUD pp</b>
<b>Deluxe Suite Deck 4</b>	<b>9240 AUD pp</b>
<b>Deluxe Suite Deck 5</b>	<b>9240 AUD pp</b>
<b>Deluxe Suite Deck 6</b>	<b>9240 AUD pp</b>
<b>Prestige Deck 5 Suite</b>	<b>9940 AUD pp</b>
<b>Prestige Deck 6 Suite</b>	<b>10250 AUD pp</b>
<b>Privilege Suite Deck 5</b>	<b>10500 AUD pp</b>
<b>Privilege Suite Deck 6</b>	<b>10500 AUD pp</b>
<b>Grand Deluxe Suite Deck 5</b>	<b>10820 AUD pp</b>
<b>Grand Deluxe Suite Deck 6</b>	<b>10820 AUD pp</b>

<b>Deluxe Stateroom</b>	<b>6140 AUD pp</b>
<b>Prestige Deck 4</b>	<b>6450 AUD pp</b>
<b>Prestige Deck 5</b>	<b>6640 AUD pp</b>
<b>Prestige Deck 6</b>	<b>6900 AUD pp</b>
<b>Deluxe Suite Deck 6</b>	<b>9240 AUD pp</b>
<b>Deluxe Suite Deck 4</b>	<b>9240 AUD pp</b>
<b>Deluxe Suite Deck 5</b>	<b>9240 AUD pp</b>
<b>Deluxe Suite Deck 3</b>	<b>9240 AUD pp</b>
<b>Prestige Deck 5 Suite</b>	<b>9940 AUD pp</b>
<b>Prestige Deck 6 Suite</b>	<b>10250 AUD pp</b>
<b>Privilege Suite Deck 6</b>	<b>10500 AUD pp</b>
<b>Privilege Suite Deck 5</b>	<b>10500 AUD pp</b>
<b>Grand Deluxe Suite Deck 6</b>	<b>10820 AUD pp</b>
<b>Grand Deluxe Suite Deck 5</b>	<b>10820 AUD pp</b>

### 03-Feb-2027 to 10-Feb-2027



# Wild Earth Travel

*Small Ships, Big Adventures*

**wildearth-travel.com**

**info@wildearth-travel.com**

## PRICING

### 24-Feb-2027 to 03-Mar-2027

<b>Deluxe Stateroom</b>	<b>6140 AUD pp</b>
<b>Prestige Deck 4</b>	<b>6450 AUD pp</b>
<b>Prestige Deck 5</b>	<b>6640 AUD pp</b>
<b>Prestige Deck 6</b>	<b>6900 AUD pp</b>
<b>Deluxe Suite Deck 4</b>	<b>9240 AUD pp</b>
<b>Deluxe Suite Deck 3</b>	<b>9240 AUD pp</b>
<b>Deluxe Suite Deck 5</b>	<b>9240 AUD pp</b>
<b>Deluxe Suite Deck 6</b>	<b>9240 AUD pp</b>
<b>Prestige Deck 5 Suite</b>	<b>9940 AUD pp</b>
<b>Prestige Deck 6 Suite</b>	<b>10250 AUD pp</b>
<b>Privilege Suite Deck 6</b>	<b>10500 AUD pp</b>
<b>Privilege Suite Deck 5</b>	<b>10500 AUD pp</b>
<b>Grand Deluxe Suite Deck 6</b>	<b>10820 AUD pp</b>
<b>Grand Deluxe Suite Deck 5</b>	<b>10820 AUD pp</b>
<b>Vieux Fort to Vieux Fort Departure</b>	<b>0 pp</b>

<b>Deluxe Stateroom</b>	<b>6140 AUD pp</b>
<b>Prestige Deck 4</b>	<b>6450 AUD pp</b>
<b>Prestige Deck 5</b>	<b>6640 AUD pp</b>
<b>Prestige Deck 6</b>	<b>6900 AUD pp</b>
<b>Deluxe Suite Deck 4</b>	<b>9240 AUD pp</b>
<b>Deluxe Suite Deck 3</b>	<b>9240 AUD pp</b>
<b>Deluxe Suite Deck 6</b>	<b>9240 AUD pp</b>
<b>Deluxe Suite Deck 5</b>	<b>9240 AUD pp</b>
<b>Prestige Deck 5 Suite</b>	<b>9940 AUD pp</b>
<b>Prestige Deck 6 Suite</b>	<b>10250 AUD pp</b>
<b>Privilege Suite Deck 6</b>	<b>10500 AUD pp</b>
<b>Privilege Suite Deck 5</b>	<b>10500 AUD pp</b>
<b>Grand Deluxe Suite Deck 5</b>	<b>10820 AUD pp</b>
<b>Grand Deluxe Suite Deck 6</b>	<b>10820 AUD pp</b>
<b>Vieux Fort to Vieux Fort Departure</b>	<b>0 pp</b>

### 03-Mar-2027 to 10-Mar-2027

# Wild Earth Travel

*Small Ships, Big Adventures*

**wildearth-travel.com**

**info@wildearth-travel.com**

## PRICING

### 10-Mar-2027 to 17-Mar-2027

<b>Deluxe Stateroom</b>	<b>6140 AUD pp</b>
<b>Prestige Deck 4</b>	<b>6450 AUD pp</b>
<b>Prestige Deck 5</b>	<b>6640 AUD pp</b>
<b>Prestige Deck 6</b>	<b>6900 AUD pp</b>
<b>Deluxe Suite Deck 6</b>	<b>9240 AUD pp</b>
<b>Deluxe Suite Deck 4</b>	<b>9240 AUD pp</b>
<b>Deluxe Suite Deck 3</b>	<b>9240 AUD pp</b>
<b>Deluxe Suite Deck 5</b>	<b>9240 AUD pp</b>
<b>Prestige Deck 5 Suite</b>	<b>9940 AUD pp</b>
<b>Prestige Deck 6 Suite</b>	<b>10250 AUD pp</b>
<b>Privilege Suite Deck 5</b>	<b>10500 AUD pp</b>
<b>Privilege Suite Deck 6</b>	<b>10500 AUD pp</b>
<b>Grand Deluxe Suite Deck 5</b>	<b>10820 AUD pp</b>
<b>Grand Deluxe Suite Deck 6</b>	<b>10820 AUD pp</b>
<b>Vieux Fort to Vieux Fort Departure</b>	<b>0 pp</b>

<b>Deluxe Stateroom</b>	<b>6140 AUD pp</b>
<b>Prestige Deck 4</b>	<b>6450 AUD pp</b>
<b>Prestige Deck 5</b>	<b>6640 AUD pp</b>
<b>Prestige Deck 6</b>	<b>6900 AUD pp</b>
<b>Deluxe Suite Deck 3</b>	<b>9240 AUD pp</b>
<b>Deluxe Suite Deck 4</b>	<b>9240 AUD pp</b>
<b>Deluxe Suite Deck 6</b>	<b>9240 AUD pp</b>
<b>Deluxe Suite Deck 5</b>	<b>9240 AUD pp</b>
<b>Prestige Deck 5 Suite</b>	<b>9940 AUD pp</b>
<b>Prestige Deck 6 Suite</b>	<b>10250 AUD pp</b>
<b>Privilege Suite Deck 5</b>	<b>10500 AUD pp</b>
<b>Privilege Suite Deck 6</b>	<b>10500 AUD pp</b>
<b>Grand Deluxe Suite Deck 5</b>	<b>10820 AUD pp</b>
<b>Grand Deluxe Suite Deck 6</b>	<b>10820 AUD pp</b>
<b>Vieux Fort to Vieux Fort Departure</b>	<b>0 pp</b>

### 17-Mar-2027 to 24-Mar-2027



# Wild Earth Travel

*Small Ships, Big Adventures*



**wildearth-travel.com**

**info@wildearth-travel.com**

## SPECIAL OFFERS

Online prices reflect the current brochure fare savings of up to 30%. Prices may change based on demand. Terms and conditions apply. This special offer is subject to availability. Please contact us for more details.



**Wild Earth Travel**

*Small Ships, Big Adventures*

**0800 945 3327** (within New Zealand) | +64 (0) 3 365 1355 | **1800 107 715** (within Australia)

info@wildearth-travel.com | **wildearth-travel.com**